

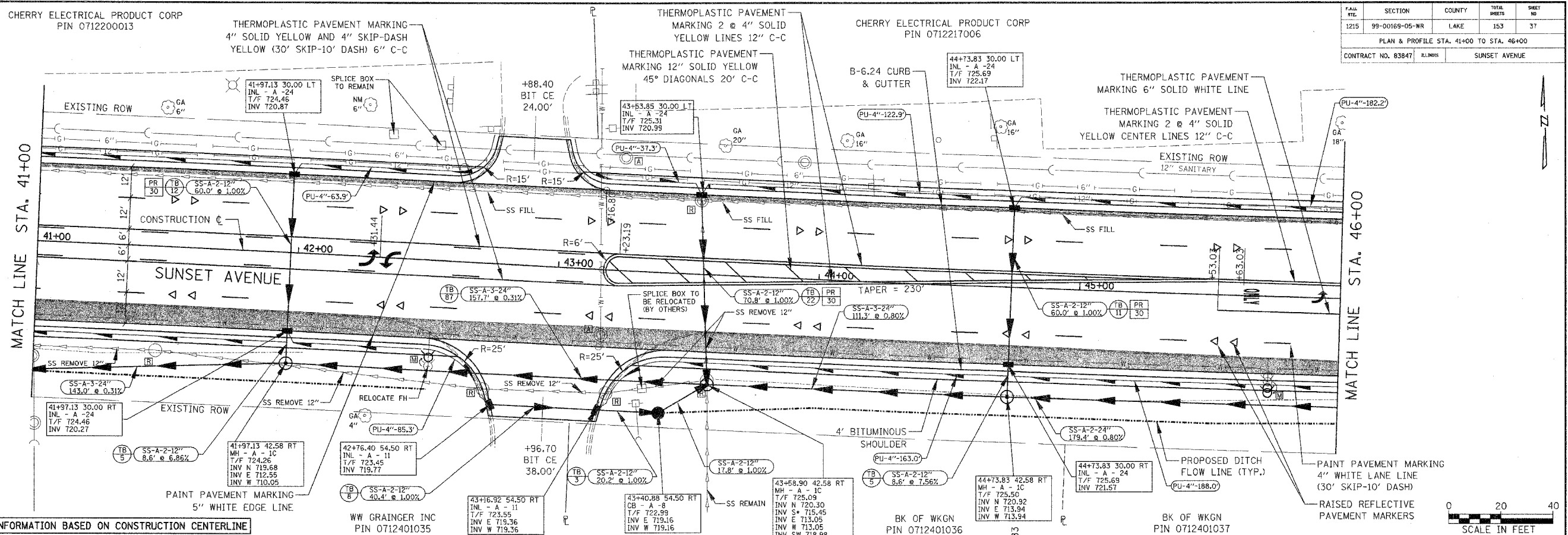
CHERRY ELECTRICAL PRODUCT CORP  
PIN 0712200013

THERMOPLASTIC PAVEMENT MARKING  
4" SOLID YELLOW AND 4" SKIP-DASH  
YELLOW (30' SKIP-10' DASH) 6" C-C

THERMOPLASTIC PAVEMENT  
MARKING 2 @ 4" SOLID  
YELLOW LINES 12" C-C

CHERRY ELECTRICAL PRODUCT CORP  
PIN 0712217006

F.A.C. FILE	SECTION	COUNTY	TOTAL SHEETS	SHEET NO.
1215	99-00169-05-WR	LAKE	153	37
PLAN & PROFILE STA. 41+00 TO STA. 46+00				
CONTRACT NO. 83847				
SUNSET AVENUE				

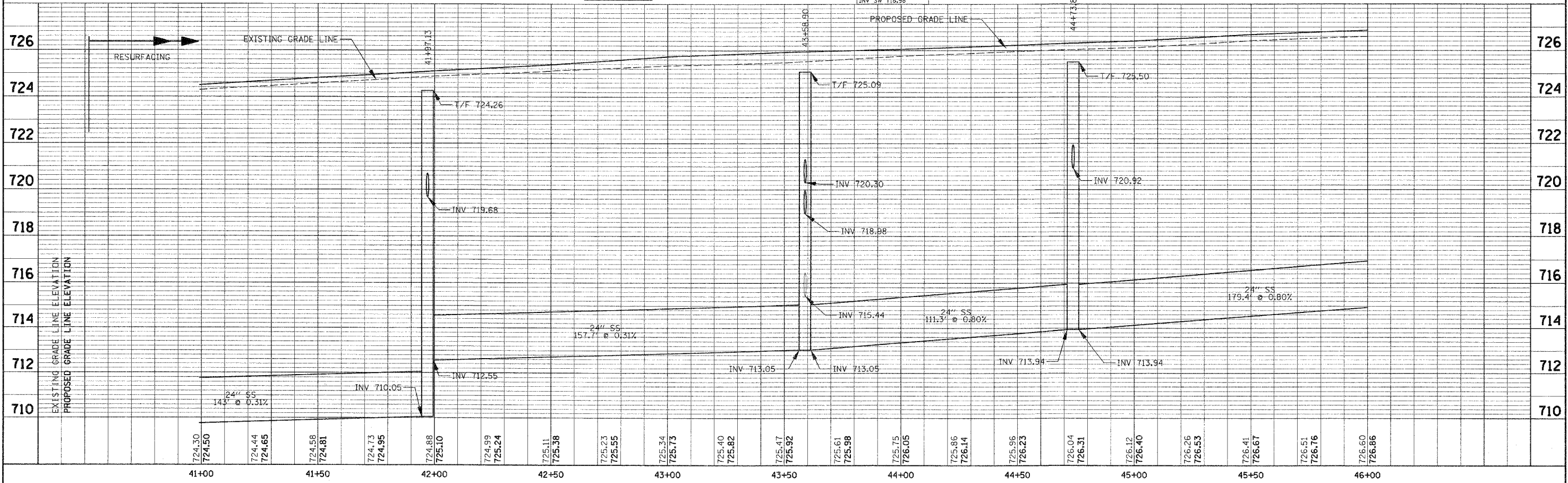
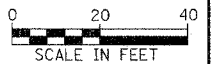


NOTE: ALL STATION AND OFFSET INFORMATION BASED ON CONSTRUCTION CENTERLINE

WW GRAINGER INC  
PIN 0712401035

BK OF WKGN  
PIN 0712401036

BK OF WKGN  
PIN 0712401037



DATE	BY	REVISION

DATE	BY	REVISION