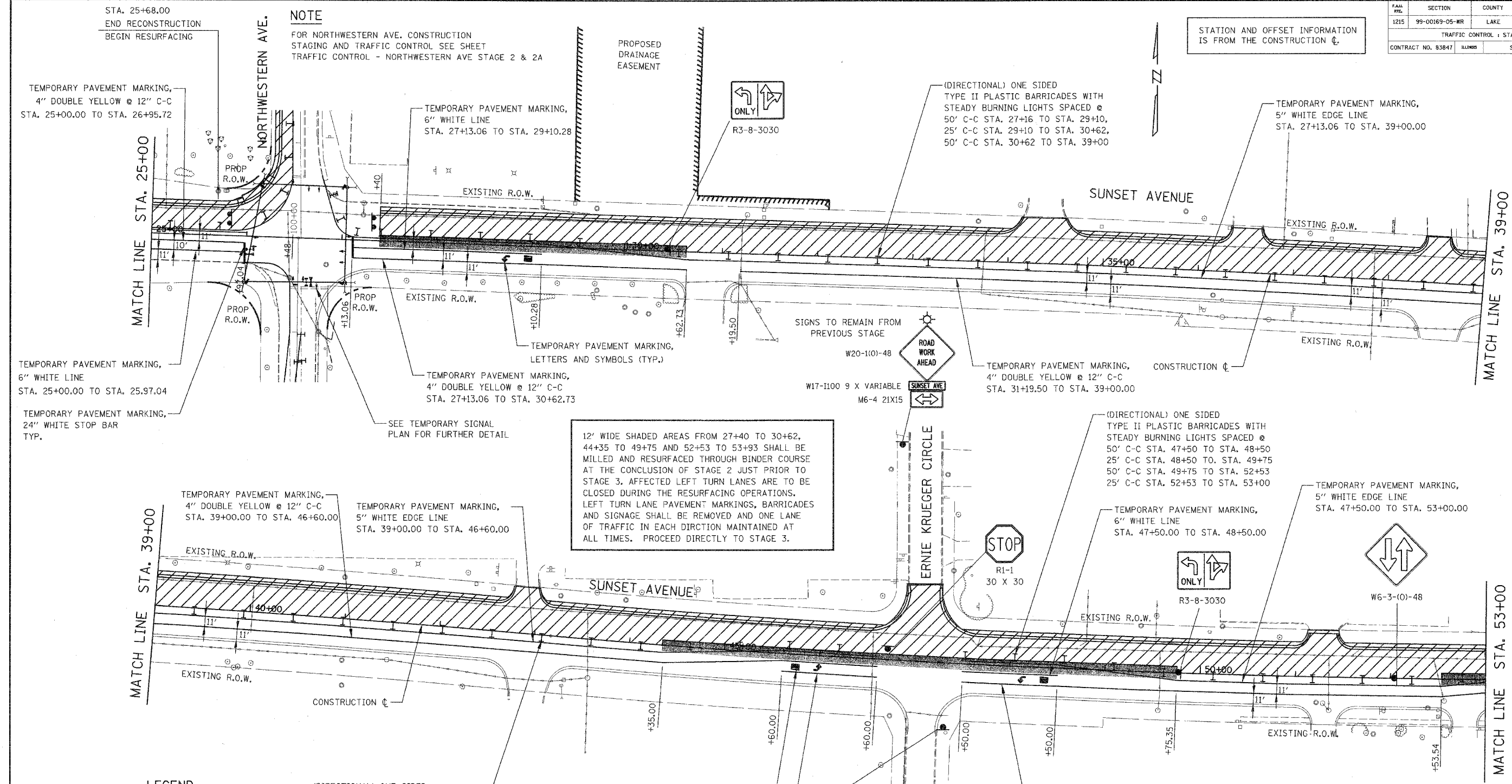


FAH REV.	SECTION	COUNTY	TOTAL SHEETS	SHEET NO.
1215	99-00169-05-WR	LAKE	153	49
TRAFFIC CONTROL - STAGE 2				
CONTRACT NO. 83847 ILLINOIS SUNSET AVENUE				

STATION AND OFFSET INFORMATION IS FROM THE CONSTRUCTION ϕ .

NOTE
FOR NORTHWESTERN AVE. CONSTRUCTION STAGING AND TRAFFIC CONTROL SEE SHEET TRAFFIC CONTROL - NORTHWESTERN AVE STAGE 2 & 2A



12' WIDE SHADED AREAS FROM 27+40 TO 30+62, 44+35 TO 49+75 AND 52+53 TO 53+93 SHALL BE MILLED AND RESURFACED THROUGH BINDER COURSE AT THE CONCLUSION OF STAGE 2 JUST PRIOR TO STAGE 3. AFFECTED LEFT TURN LANES ARE TO BE CLOSED DURING THE RESURFACING OPERATIONS. LEFT TURN LANE PAVEMENT MARKINGS, BARRICADES AND SIGNAGE SHALL BE REMOVED AND ONE LANE OF TRAFFIC IN EACH DIRECTION MAINTAINED AT ALL TIMES. PROCEED DIRECTLY TO STAGE 3.

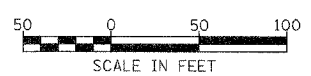
LEGEND

- PAVEMENT WORK ZONE (WORK OUTSIDE PAVEMENT EDGE WILL BE ACCOMPLISHED ADJACENT TO PAVEMENT WORK ZONE DURING THAT STAGE)
- PROPOSED PAVEMENT WIDENING PLACED IN THIS STAGE
- TEMPORARY PAVEMENT PLACED IN THIS STAGE
- TEMPORARY PAVEMENT PLACED BY OTHERS (INTERSECTION PROJECT)
- DIRECTION OF TRAFFIC
- SIGN LOCATION

(DIRECTIONAL) ONE SIDED TYPE II PLASTIC BARRICADES WITH STEADY BURNING LIGHTS SPACED @ 50' C-C STA. 39+00 TO STA. 44+35 25' C-C STA. 44+35 TO STA. 45+60 50' C-C STA. 45+60 TO STA. 46+60

TEMPORARY PAVEMENT MARKING, LETTER AND SYMBOLS (TYP.)

TEMPORARY PAVEMENT MARKING, 6" WHITE LINE STA. 45+60.00 TO STA. 46+60.00



REVISIONS	
NAME	DATE

Lake County
Division of Transportation

SUNSET AVENUE
TRAFFIC CONTROL
STAGE 2

PLAN	DATE	
	BY	
	REVISIONS	
	NOTE BOOK NO.	

PROFILE	DATE	
	BY	
	REVISIONS	
	NOTE BOOK NO.	