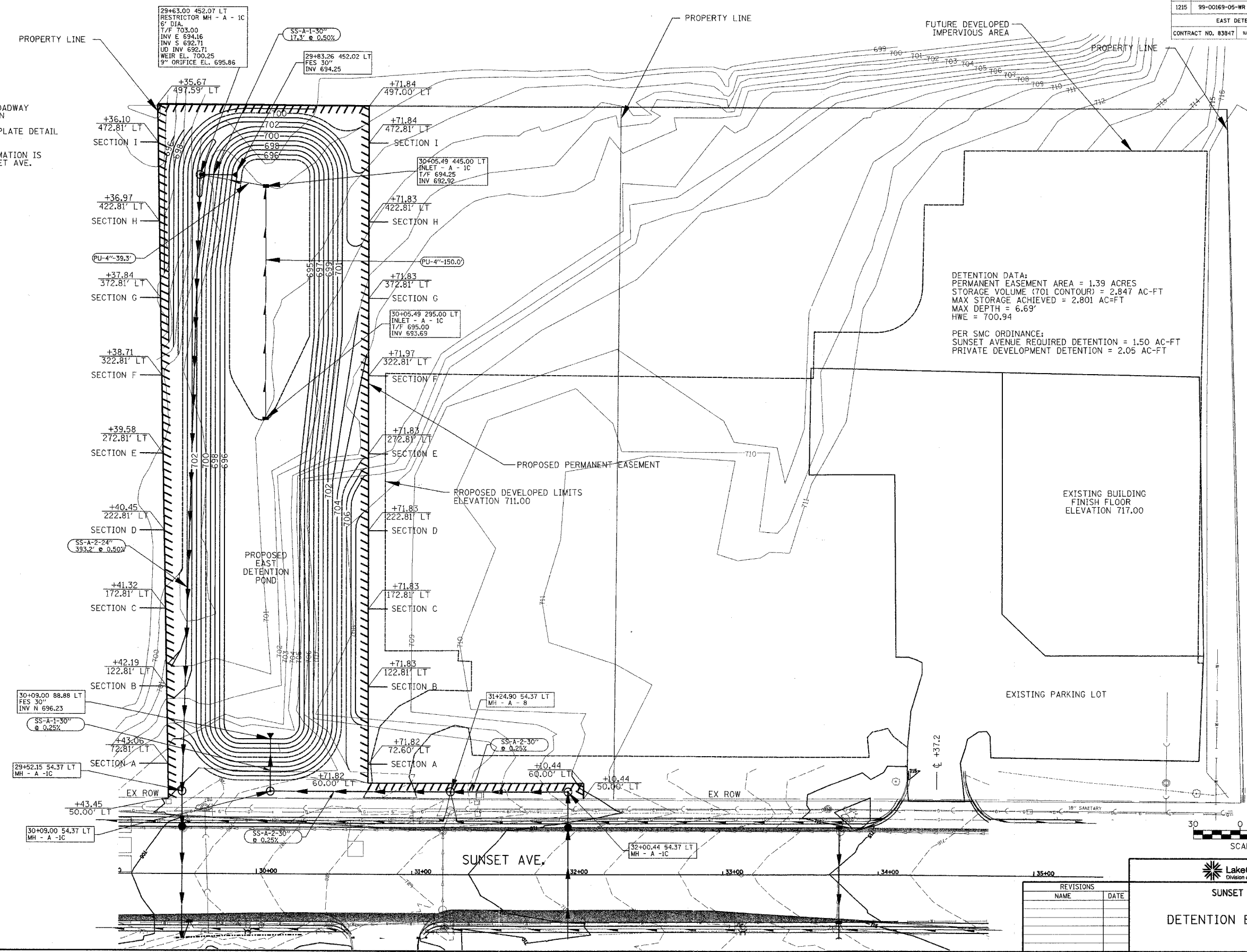


| FILE NO. | SECTION | COUNTY | TOTAL SHEETS | SHEET NO. |
|-----------------------------|----------------|---------------|--------------|-----------|
| 1215 | 99-00169-05-WR | LAKE | 153 | 65 |
| EAST DETENTION BASIN DETAIL | | | | |
| CONTRACT NO. 83947 | | SUNSET AVENUE | | |

- NOTE:
- 1) SEE PLAN AND PROFILE SHEET STATIONS 24+00 - 36+00 FOR ROADWAY DRAINAGE STRUCTURE INFORMATION
 - 2) SEE MANHOLE WITH RESTRICTOR PLATE DETAIL SHEET FOR RESTRICTOR DETAILS
 - 3) ALL STATION AND OFFSET INFORMATION IS FROM CONSTRUCTION \pm OF SUNSET AVE.



DETENTION DATA:
 PERMANENT EASEMENT AREA = 1.39 ACRES
 STORAGE VOLUME (701 CONTOUR) = 2,847 AC-FT
 MAX STORAGE ACHIEVED = 2,801 AC-FT
 MAX DEPTH = 6.69'
 HWE = 700.94

PER SMC ORDINANCE:
 SUNSET AVENUE REQUIRED DETENTION = 1.50 AC-FT
 PRIVATE DEVELOPMENT DETENTION = 2.05 AC-FT



| REVISIONS | |
|-----------|------|
| NAME | DATE |
| | |
| | |
| | |

Lake County
 Division of Transportation

SUNSET AVENUE

DETENTION BASIN PLAN