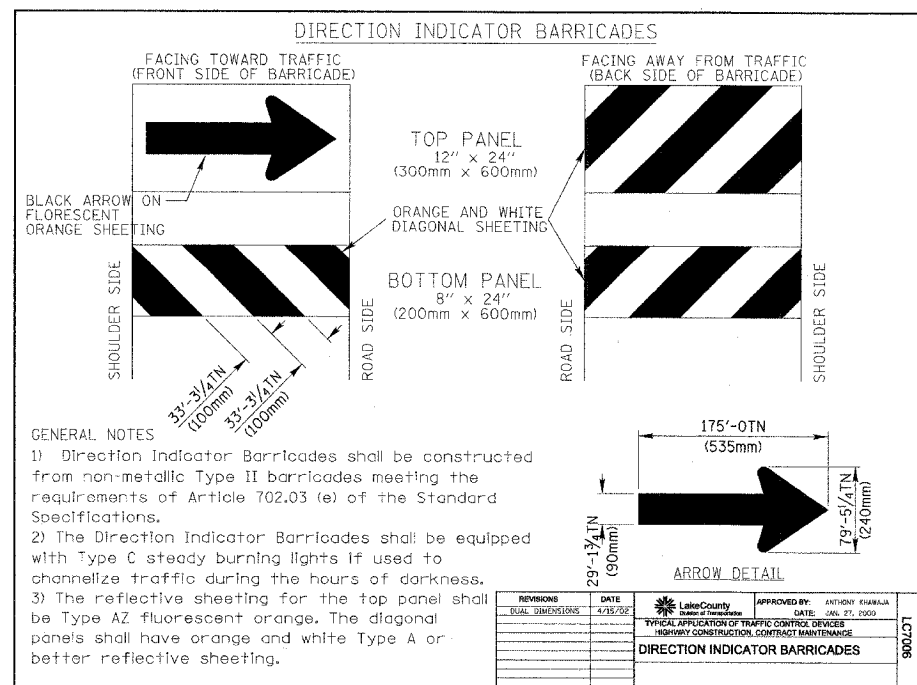
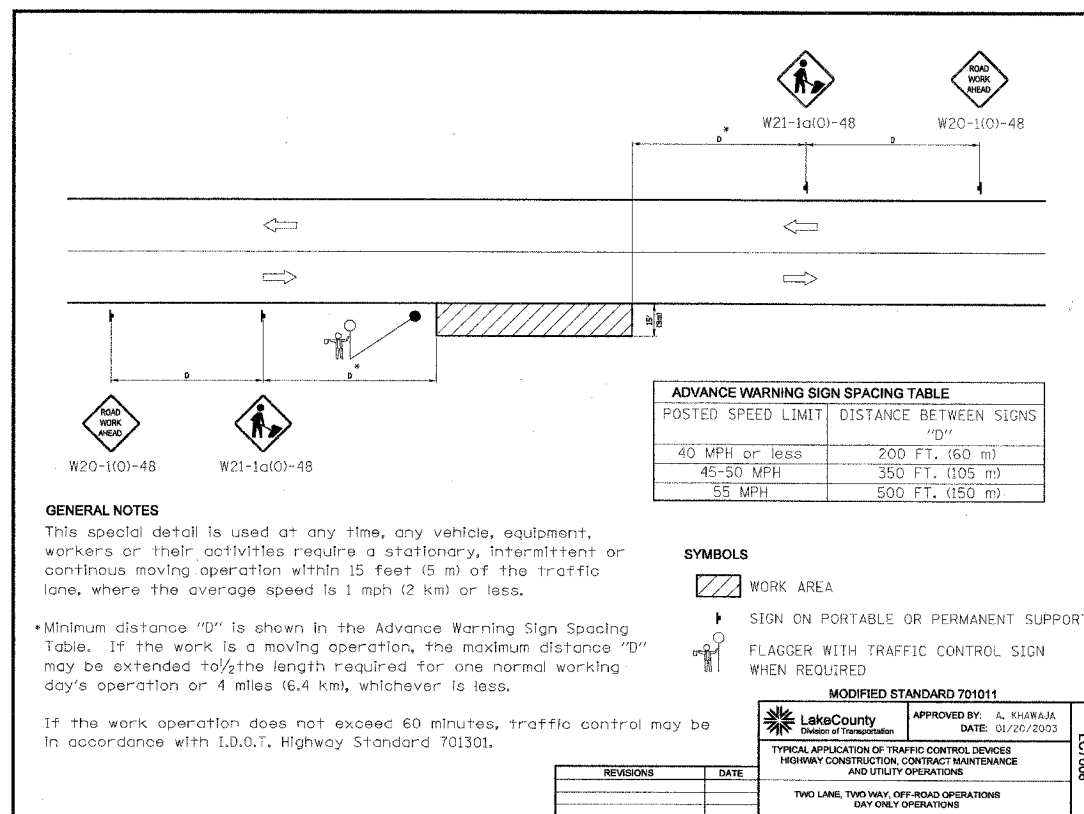
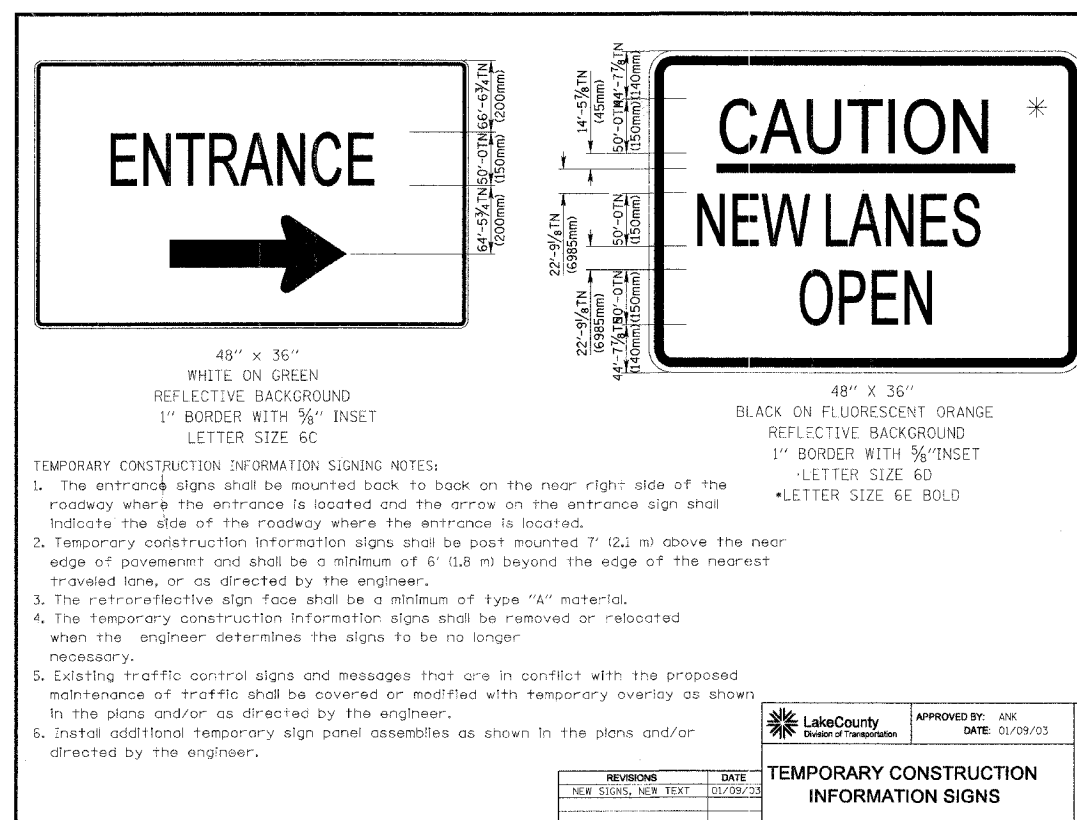


FILE NO.	SECTION	COUNTY	TOTAL SHEETS	SHEET NO.
1215	99-00169-05-WR	LAKE	153	153
CONTRACT NO. 83847		RLDMS	SUNSET AVENUE	



GENERAL NOTES

- 1) Direction Indicator Barricades shall be constructed from non-metallic Type II barricades meeting the requirements of Article 702.03 (e) of the Standard Specifications.
- 2) The Direction Indicator Barricades shall be equipped with Type C steady burning lights if used to channelize traffic during the hours of darkness.
- 3) The reflective sheeting for the top panel shall be Type AZ fluorescent orange. The diagonal panels shall have orange and white Type A or better reflective sheeting.



REVISIONS	
NAME	DATE

Lake County
Division of Transportation

SUNSET AVENUE

LCDOT STANDARD DETAILS