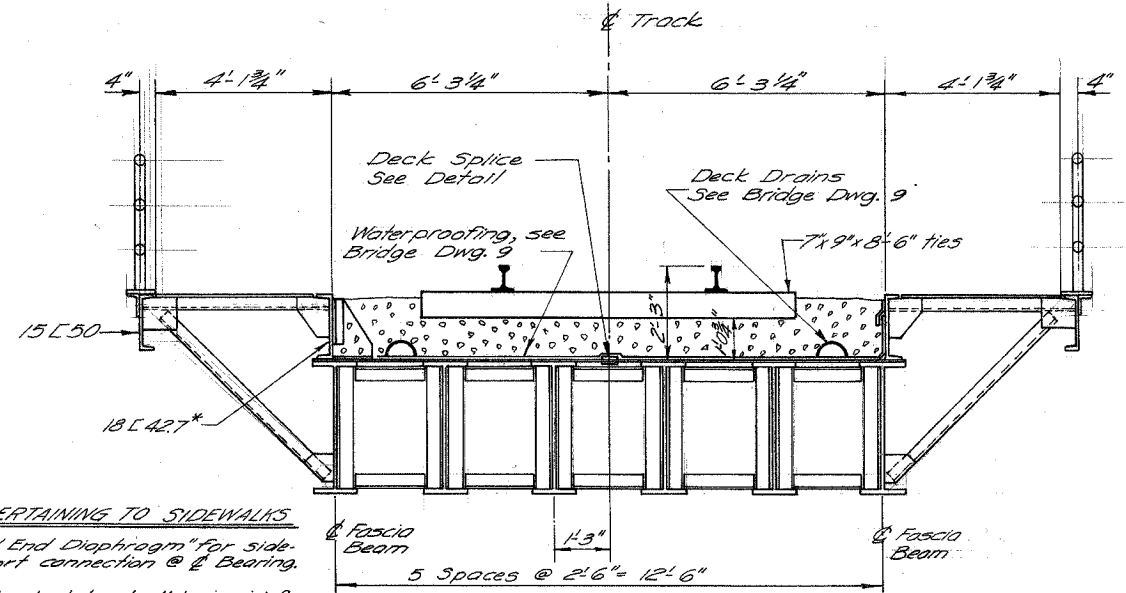
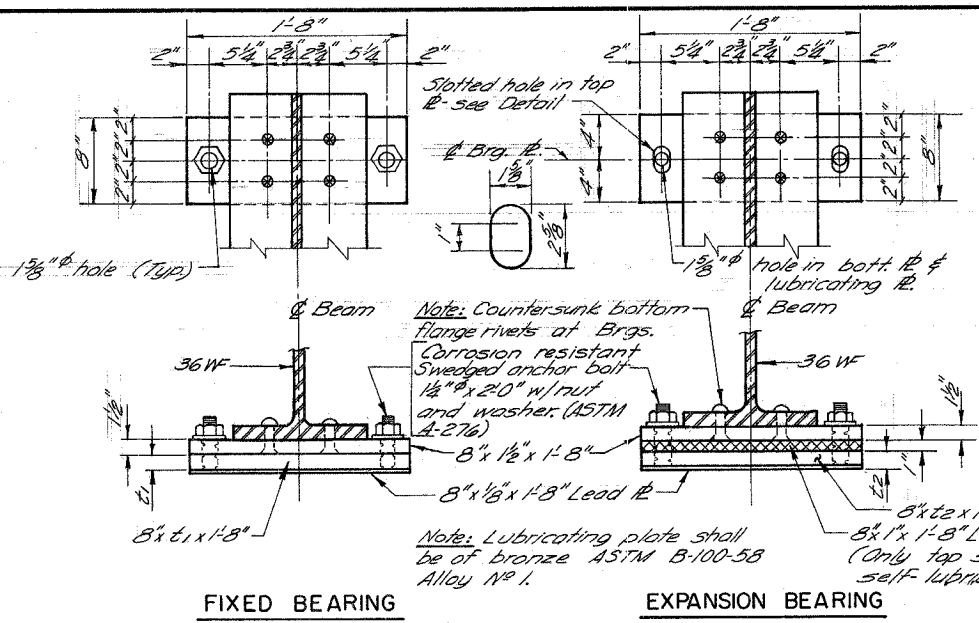


FAU Route 1215	Section Number 99-00169-05-WR	County Lake	Total Sheets 156	Sheet Number 155
Contract Number: 83847		Illinois	Sunset Ave.	

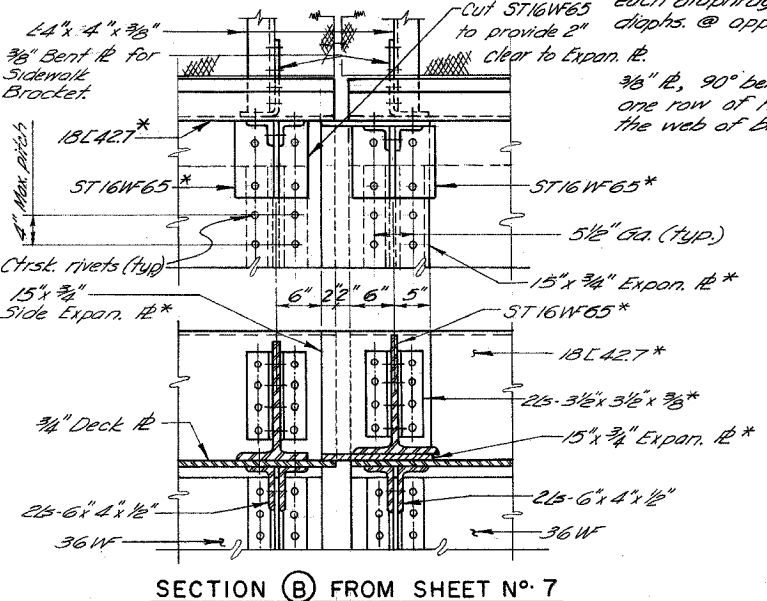
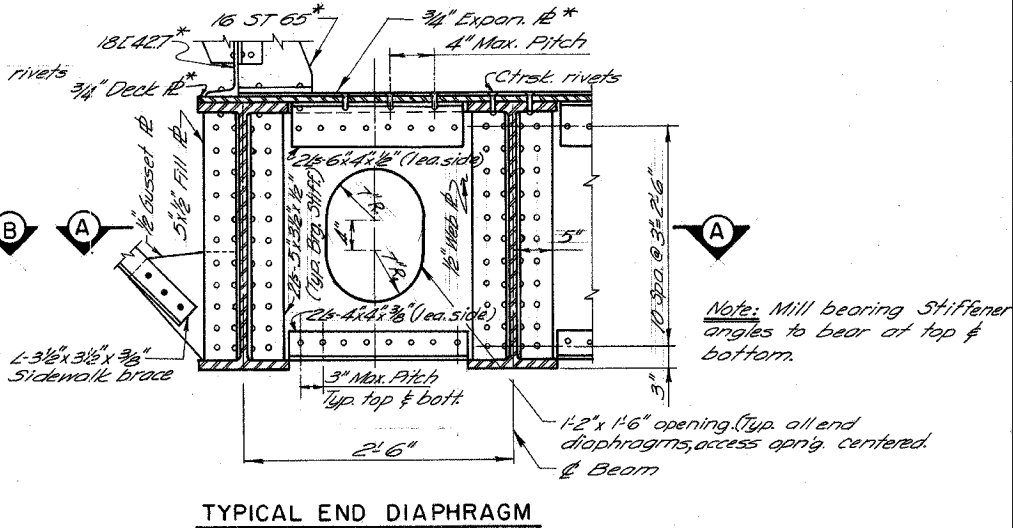
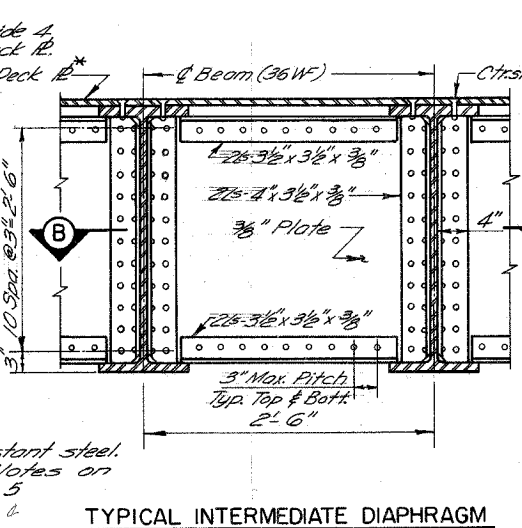
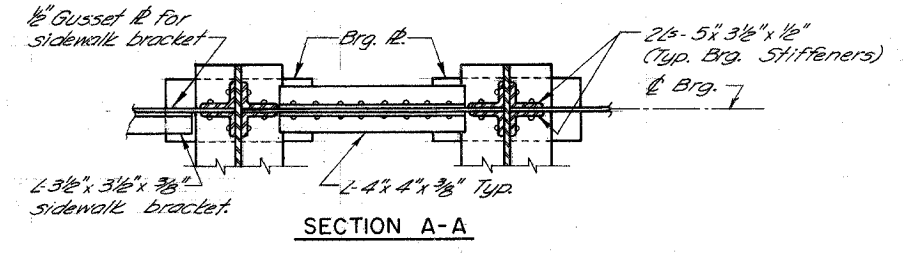
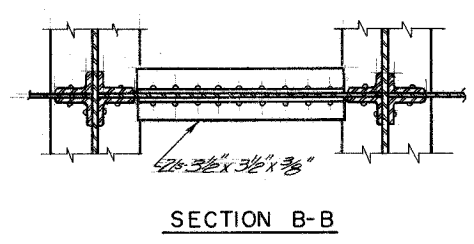
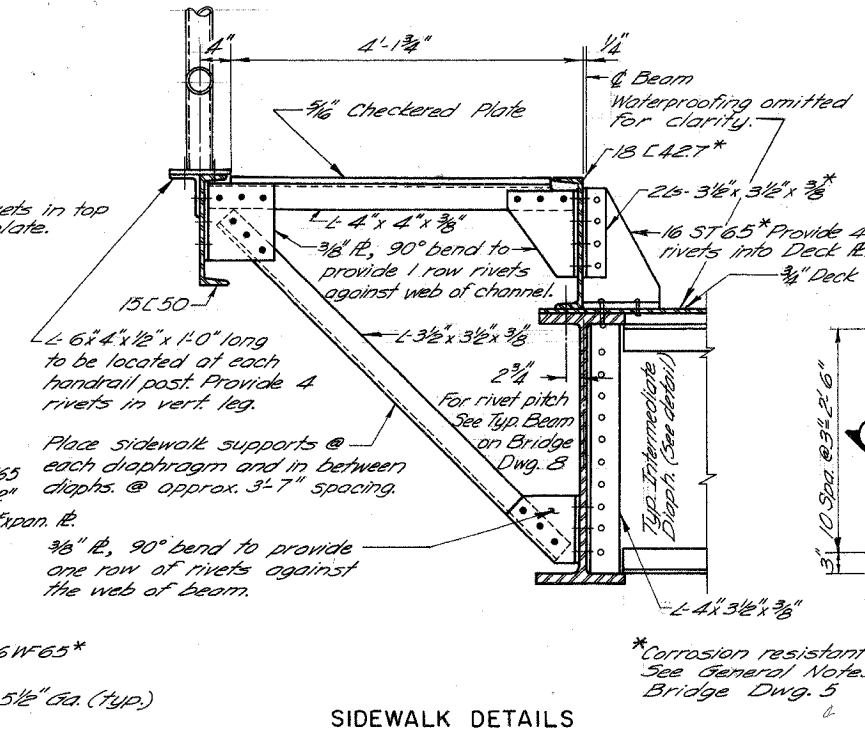
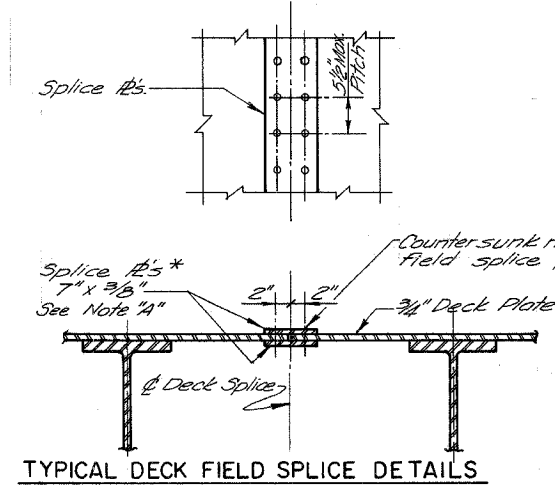


NOTES PERTAINING TO SIDEWALKS
See "Typical End Diaphragm" for sidewalk support connection @ Bearing.
5/16" checkered plate shall be paid for at the Contract Unit Price per pound for furnishing and erecting structural steel.



BEARING BOTTOM PLATE THICKNESS

Beam Size	t1	t2
36W150	3"	2"
36W160	2 3/8"	1 3/8"
36W182	2 1/2"	1 1/2"
36W230	3"	2"



NOTE "A"
Extend bottom deck splice plates to the toes of angles connecting the deck plates to end diaphragms and the top splice plates to sliding plates. Maintain 2" clear between top deck splice plates and sliding plates.

STEEL DETAILS

CHICAGO & NORTHWESTERN RAILROAD BRIDGE
OVER COUNTY HIGHWAY 46
LAKE COUNTY
ILLINOIS

DESIGNED BY: DRAWN BY: DATE: CHECKED BY: DATE: IN CHARGE: DATE: 11/77