

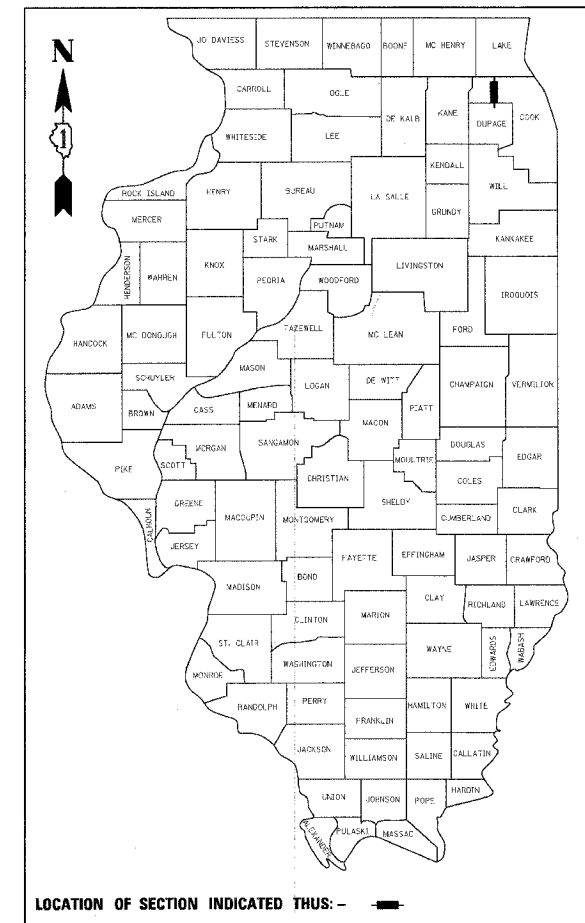
F.A.U. DIST.	SECTION	COUNTY	TOTAL SHEETS	SHEET NO.
2585	97-00071-00-PV	COOK	116	1
FED. ROAD DIST. NO. 1 ILLINOIS		FED. AID PROJECT		

STATE OF ILLINOIS
DEPARTMENT OF TRANSPORTATION
DIVISION OF HIGHWAYS

PLANS FOR PROPOSED
FEDERAL AID HIGHWAY

FAU 2585 / PLUM GROVE ROAD
RECONSTRUCTION AND TRAFFIC SIGNALS
EMERSON AVENUE TO ALDRIDGE AVENUE

Section No.: 97-00071-00-PV
Project No.: M-8003(210)
Job No.: C-91-273-02
CITY OF ROLLING MEADOWS
COOK COUNTY



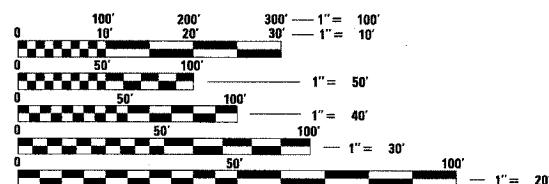
LIST OF STATE STANDARDS

STANDARD NO.	DESCRIPTION
STD. 000001-04	STANDARD SYMBOLS, ABBREVIATIONS AND PATTERNS
STD. 280001-03	TEMPORARY EROSION CONTROL SYSTEMS
STD. 353001-03	PCC BASE COURSE WITH BITUMINOUS CONCRETE BINDER AND SURFACE COURSES
STD. 420001-06	PAVEMENT JOINTS
STD. 420101-03	7.2 m (24') JOINTED PCC PAVEMENT
STD. 420111-01	PCC PAVEMENT ROUNDOUTS
STD. 420701-01	PAVEMENT FABRIC
STD. 424001-04	CURB RAMPS FOR SIDEWALKS
STD. 442101-06	CLASS B PATCHES
STD. 542301-01	PRECAST REINFORCED CONCRETE FLARED END SECTION
STD. 542306-01	PRECAST REINFORCED CONCRETE ELLIPTICAL FLARED END SECTION
STD. 601001-01	SUB-SURFACE DRAINS
STD. 602001	CATCH BASIN, TYPE A
STD. 602011	CATCH BASIN, TYPE C
STD. 602301-01	INLET, TYPE A
STD. 602401-01	MANHOLE, TYPE A
STD. 602601-01	PRECAST REINFORCED CONCRETE FLAT SLAB TOP
STD. 602701-01	MANHOLE STEPS
STD. 604001-02	FRAME AND LIDS TYPE 1
STD. 604036-01	GRATE, TYPE 8
STD. 604091-01	FRAME AND GRATE TYPE 24
STD. 606001-03	CONCRETE CURB TYPE B AND COMBINATION CONCRETE CURB & GUTTER
STD. 606006-01	OUTLETS FOR CONC. CURB AND GUTTER TYPE B-15.60 (B-6.24)
STD. 606301-03	PC CONCRETE ISLAND AND MEDIANS
STD. 606306-02	CORRUGATED PC CONCRETE MEDIANS
STD. 701006-02	OFF-RD OPERATIONS, 2L, 2W, 4.5 m (15') TO 600 mm (24") FROM PAVEMENT EDGE
STD. 701011-01	OFF-RD MOVING OPERATIONS, 2L, 2W, DAY ONLY
STD. 701301-02	LANE CLOSURE 2L, 2W SHORT TIME OPERATIONS
STD. 701311-02	LANE CLOSURE 2L, 2W MOVING OPERATIONS-DAY ONLY
STD. 701501-03	URBAN LANE CLOSURE 2L, 2W UNDIVIDED
STD. 701606-04	URBAN LANE CLOSURE, MULTILANE, 2W WITH MOUNTABLE MEDIAN
STD. 701701-04	URBAN LANE CLOSURE FOR MULTILANE INTERSECTION
STD. 701801-03	LANE CLOSURE MULTI LANE 1 WAY OR 2 WAY CROSSWALK OR SIDEWALK CLOSURE
STD. 702001-06	TRAFFIC CONTROL DEVICES
STD. 720001	SIGN PANEL MOUNTING DETAILS
STD. 720006-01	SIGN PANEL ERECTION DETAILS
STD. 728001	TELESCOPING STEEL SIGN SUPPORT
STD. 814001-01	HANDHOLES
STD. 814006-01	DOUBLE HANDHOLES
STD. 857001	STANDARD PHASE DESIGNATION DIAGRAMS AND PHASE SEQUENCES
STD. 877001-02	STEEL MAST ARM ASSEMBLY AND POLE
STD. 878001-05	CONCRETE FOUNDATION DETAILS
STD. 880001	SPAN WIRE MOUNTED SIGNALS AND FLASHING BEACON INSTALLATION
STD. 880006	TRAFFIC SIGNAL MOUNTING DETAILS
STD. 886001	DETECTOR LOOP INSTALLATIONS
STD. 886006	TYPICAL LAYOUTS FOR DETECTION LOOPS
STD. B.L.R. 14-9	PORTLAND CEMENT CONCRETE PAVEMENT (NONREINFORCED)
STD. B.L.R. 17-3	TRAFFIC CONTROL DEVICES - DAY LABOR CONSTRUCTION
STD. B.L.R. 18-4	TRAFFIC CONTROL DEVICES - DAY LABOR MAINTENANCE
BD 32	BUTT JOINT AND BITUMINOUS TAPER DETAILS
TC 11	TYPICAL APPLICATIONS RAISED REFLECTIVE PAVEMENT MARKERS (SNOW-PLOW RESISTANT)
TC 13	DISTRICT ONE TYPICAL PAVEMENT MARKINGS

CHRISTOPHER B. BURKE ENGINEERING LTD.
9575 West Higgins Road, Suite 600
Rosemont, Illinois 60018 (847) 823-0500

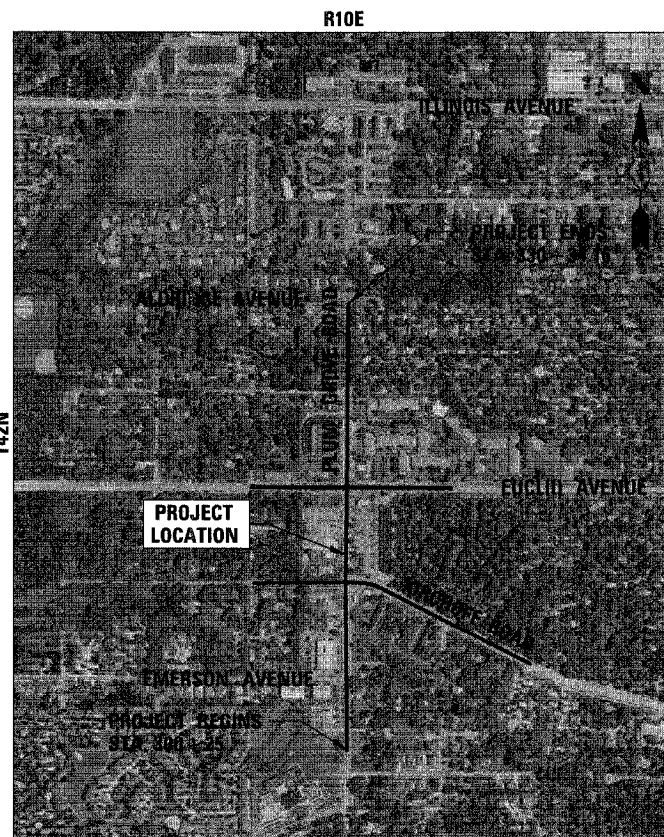
FEDERAL AID DESIGN ENGINEER: KEVIN STALLWORTH
201 W. CENTER COURT
SCHAMBURG, ILLINOIS 60196-1096
(847) 705-4169

THE CONTRACTOR SHALL BE SOLELY RESPONSIBLE FOR JOB SITE SAFETY AS WELL AS SUPERVISION/DIRECTION AND MEANS/METHODS OF CONSTRUCTION.



FULL SIZE PLANS HAVE BEEN PREPARED USING STANDARD ENGINEERING SCALES. REDUCED SIZED PLANS WILL NOT CONFORM TO STANDARD SCALES. IN MAKING MEASUREMENTS ON REDUCED PLANS, THE ABOVE SCALES MAY BE USED.

J.U.L.I.E.
JOINT UTILITY LOCATION INFORMATION FOR EXCAVATION
1-800-892-0123



GROSS LENGTH OF PROJECT = 2800 LINEAL FEET (0.53 MILES)
NET LENGTH OF PROJECT = 2800 LINEAL FEET (0.53 MILES)

DESIGN DESIGNATION - MINOR ARTERIAL
TRAFFIC DATA:
EXISTING ADT = 13,000
PROPOSED ADT = 28,200
POSTED SPEED = 35 MPH
DESIGN SPEED = 40 MPH

CIVIL

MARTIN C. WORMAN
062-051360
LICENSED PROFESSIONAL ENGINEER OF ILLINOIS
ENGINEER DATE 1-5-2007
MARTIN C. WORMAN
ILLINOIS REGISTRATION No. 062-051360
EXPIRATION DATE: 11/30/2007

TRAFFIC SIGNALS

GEORGE M. ZIEGLER
062-045853
LICENSED PROFESSIONAL ENGINEER OF ILLINOIS
ENGINEER DATE 1-5-2007
GEORGE M. ZIEGLER
ILLINOIS REGISTRATION No. 062-045853
EXPIRATION DATE: 11/30/2007

STATE OF ILLINOIS
DEPARTMENT OF TRANSPORTATION
DIVISION OF HIGHWAYS

APPROVED January 5 2007
Fred Vogt Fred Vogt
DIR. OF PUBLIC WORKS, CITY OF ROLLING MEADOWS

PASSED FEBRUARY 15 2007
Christopher Holt
DISTRICT 1 LOCAL ROADS ENGINEER

RELEASING FOR BID BASED ON LIMITED REVIEW February 16 2007
Diane O'Keefe
DEPUTY DIRECTOR OF HIGHWAYS, REGION ENGINEER