

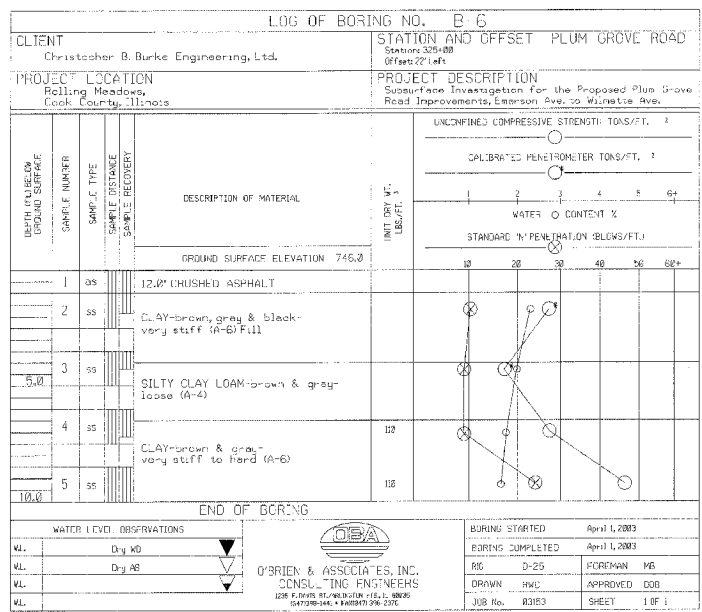
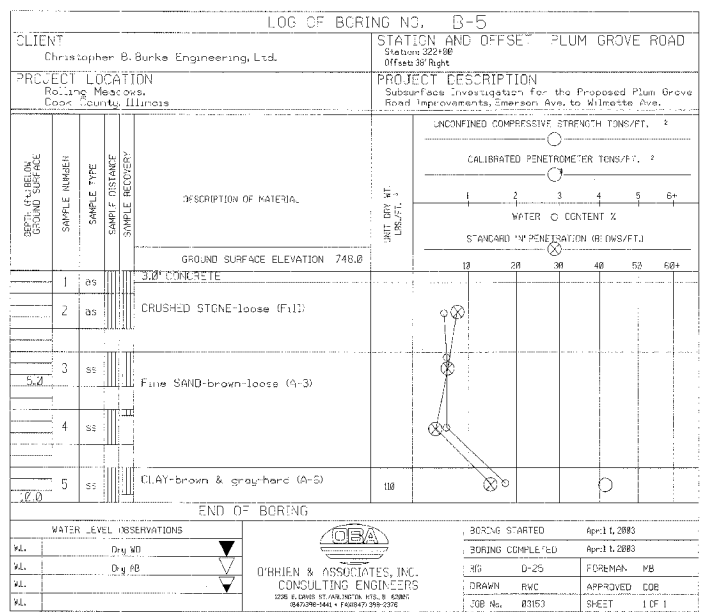
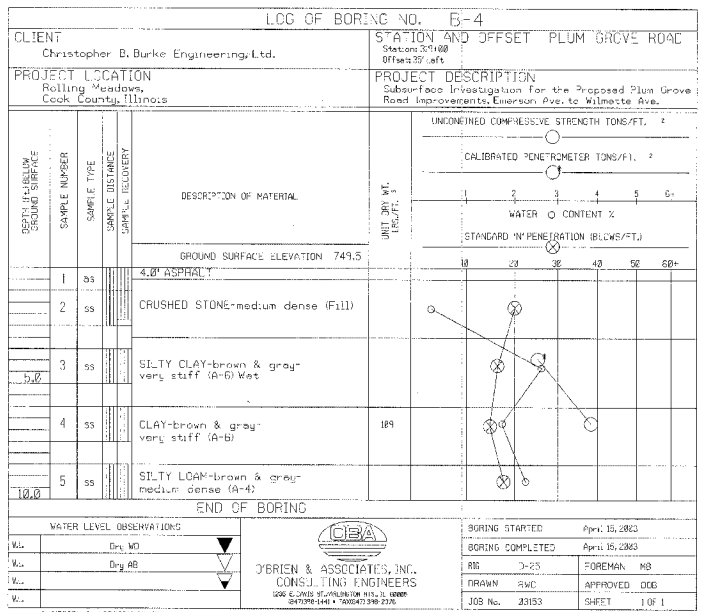
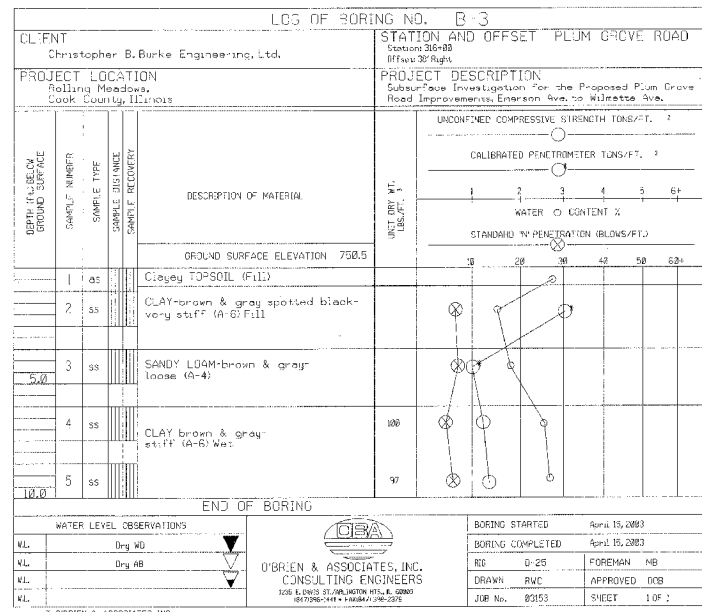
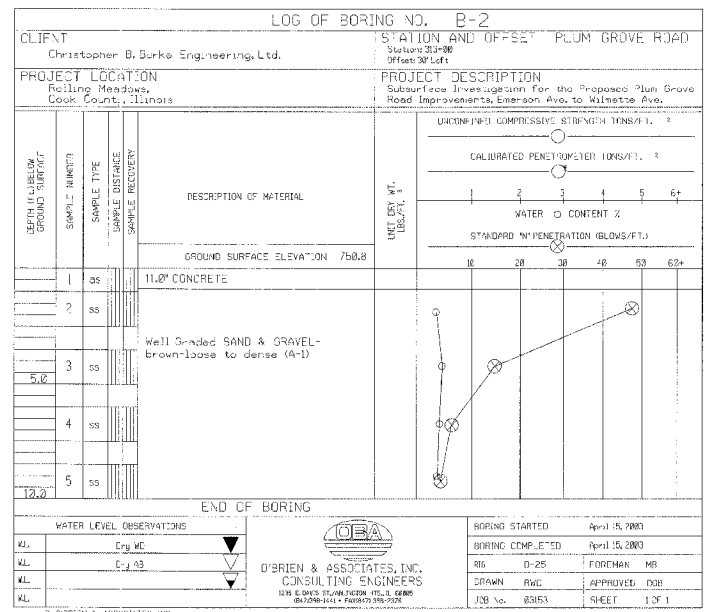
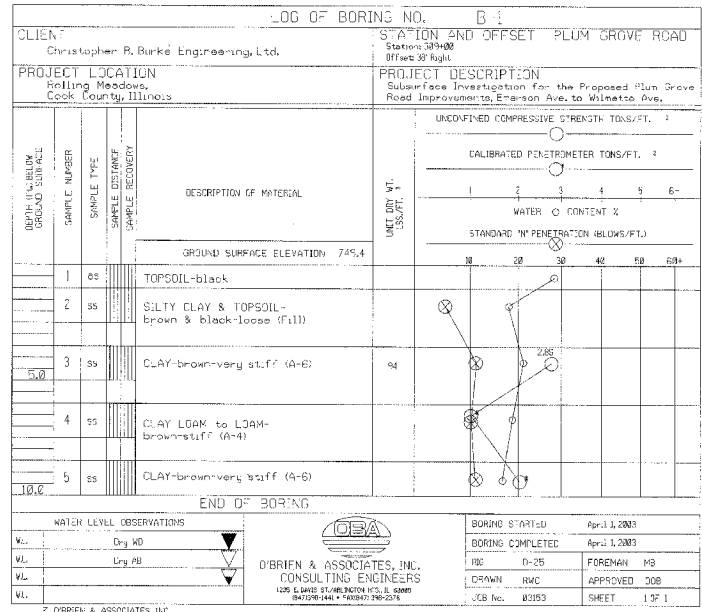
F.A. RTE.	SECTION	COUNTY	TOTAL SHEETS	SHEET NO.
2585	97-0071-00-PV	COOK	116	10
STA. TO STA.			FED. ROAD DIST. NO. [ILLINOIS] FED. AID PROJECT	

DATE	BY

CHRISTOPHER B. BURKE ENGINEERING LTD.
 9575 West Higgins Road, Suite 600
 Rosemont, Illinois 60018
 (847) 823-0500

DATE	BY

PROF. BUREAU OF ROAD CONSTRUCTION
 NOTE BOOK
 NO. 1000



REVISIONS	NAME	DATE

ILLINOIS DEPARTMENT OF TRANSPORTATION

**PLUM GROVE ROAD
 SOIL BORINGS &
 PAVEMENT CORES**

SCALE: NONE
 DATE: 6/8/2006

DRAWN BY: PMM
 CHECKED BY: MCW