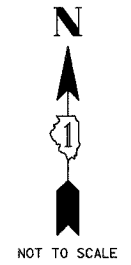


F.A. RTE.	SECTION	COUNTY	TOTAL SHEETS	SHEET NO.
2585	97-00071-00-PV	COOK	116	71
STA.	TO STA.			
FED. ROAD DIST. NO.	ILLINOIS	FED. AID PROJECT		



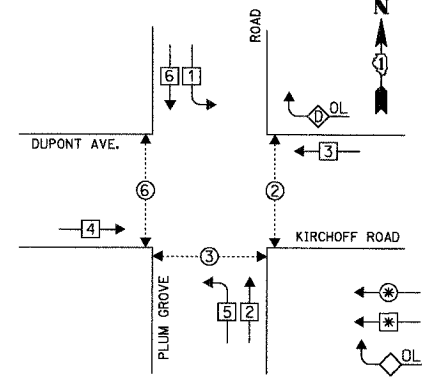
CABLE PLAN LEGEND

- | EXISTING | PROPOSED | DESCRIPTION   |
|----------|----------|---|
| [Symbol] | [Symbol] | 8" (200mm) TRAFFIC SIGNAL SECTION   |
| [Symbol] | [Symbol] | 12" (300mm) TRAFFIC SIGNAL SECTION  |
| [Symbol] | [Symbol] | 12" (300mm) PEDESTRIAN SIGNAL SECTION   |
| [Symbol] | [Symbol] | 12" (300mm) PEDESTRIAN SIGNAL SECTION   |
| [Symbol] | [Symbol] | CONTROLLER CABINET  |
| [Symbol] | [Symbol] | SERVICE INSTALLATION  |
| [Symbol] | [Symbol] | TELEPHONE INSTALLATION  |
| [Symbol] | [Symbol] | VEHICLE DETECTOR, INDUCTION LOOP  |
| [Symbol] | [Symbol] | MAGNETIC DETECTOR   |
| [Symbol] | [Symbol] | EMERGENCY VEHICLE LIGHT DETECTOR  |
| [Symbol] | [Symbol] | CONFIRMATION BEACON   |
| [Symbol] | [Symbol] | PUSHBUTTON DETECTOR   |
| [Symbol] | [Symbol] | DENOTES NUMBER OF CONDUCTORS. ALL CABLE NO. 14 EXCEPT AS INDICATED. ALL LOOP DETECTOR CABLE TO BE SHIELDED. |
| [Symbol] | [Symbol] | GROUND CABLE IN CONDUIT NO. 6 SOLID COPPER (GREEN)  |
| [Symbol] | [Symbol] | FIBER OPTIC CABLE IN CONDUIT NO. 62.5/125 2-MM12F SM12F   |
| [Symbol] | [Symbol] | SIGNAL FACE WITH BACKPLATE. "P" INDICATES PROGRAMMED HEAD.  |
| [Symbol] | [Symbol] | RAILROAD CONTROL CABINET  |
| [Symbol] | [Symbol] | ILLUMINATED SIGN "NO LEFT TURN"   |
| [Symbol] | [Symbol] | ILLUMINATED SIGN "NO RIGHT TURN"  |
| [Symbol] | [Symbol] | GROUND ROD AT HANDHOLE (H), DOUBLE HANDHOLE (H), OR CONTROLLER (C)  |
| [Symbol] | [Symbol] | GROUND ROD AT POST (P) OR MAST ARM POLE (MA)  |
| [Symbol] | [Symbol] | GROUND ROD AT ELECTRIC SERVICE INSTALLATION   |

SCHEDULE OF QUANTITIES

ITEM	UNIT	TOTAL
SIGN PANEL - TYPE 1	50 FT	79.5
CONDUIT IN TRENCH, 2" DIA., GALVANIZED STEEL	FOOT	594
CONDUIT IN TRENCH, 2 1/2" DIA., GALVANIZED STEEL	FOOT	20
CONDUIT IN TRENCH, 3" DIA., GALVANIZED STEEL	FOOT	73
CONDUIT IN TRENCH, 5" DIA., GALVANIZED STEEL	FOOT	10
CONDUIT PUSHED, 2" DIA., GALVANIZED STEEL	FOOT	546
CONDUIT PUSHED, 4" DIA., GALVANIZED STEEL	FOOT	500
HANDHOLE	EACH	6
HEAVY-DUTY HANDHOLE	EACH	4
DOUBLE HANDHOLE	EACH	2
TRENCH AND BACKFILL FOR ELECTRICAL WORK	FOOT	822
FULL-ACTUATED CONTROLLER AND TYPE IV CABINET, SPECIAL	EACH	1
TRANSCIVER - FIBER OPTIC	EACH	1
ELECTRIC CABLE IN CONDUIT, SIGNAL NO. 14 2C	FOOT	729
ELECTRIC CABLE IN CONDUIT, SIGNAL NO. 14 3C	FOOT	2354
ELECTRIC CABLE IN CONDUIT, SIGNAL NO. 14 5C	FOOT	2493
ELECTRIC CABLE IN CONDUIT, SIGNAL NO. 14 7C	FOOT	1542
ELECTRIC CABLE IN CONDUIT, LEAD-IN, NO. 14 1-PAIR	FOOT	3590
ELECTRIC CABLE IN CONDUIT, SERVICE, NO. 6 2C	FOOT	270
ELECTRIC CABLE IN CONDUIT, GROUNDING NO. 6 1C	FOOT	571
ELECTRIC CABLE IN CONDUIT NO. 20 3C, TWISTED, SHIELDED	FOOT	1331
TRAFFIC SIGNAL POST, GALVANIZED STEEL 15 FT.	EACH	1
STEEL MAST ARM ASSEMBLY AND POLE 42 FT.	EACH	1
STEEL MAST ARM ASSEMBLY AND POLE 48 FT.	EACH	2
STEEL MAST ARM ASSEMBLY AND POLE 55 FT.	EACH	1
CONCRETE FOUNDATION, TYPE A	FOOT	4
CONCRETE FOUNDATION, TYPE D	FOOT	4
CONCRETE FOUNDATION, TYPE E 36-INCH DIAMETER	FOOT	60
TRAFFIC SIGNAL BACKPLATE, LOUVERED, ALUMINUM	EACH	10
INDUCTIVE LOOP DETECTOR	EACH	14
INDUCTIVE LOOP DETECTOR TYPE I	EACH	996
LIGHT DETECTOR	EACH	5
LIGHT DETECTOR AMPLIFIER	EACH	1
PEDESTRIAN PUSH-BUTTON	EACH	1
TEMPORARY TRAFFIC SIGNAL INSTALLATION	EACH	4
REMOVE EXISTING TRAFFIC SIGNAL EQUIPMENT	EACH	1
REMOVE EXISTING HANDHOLE	EACH	11
REMOVE EXISTING CONCRETE FOUNDATION	EACH	9
SIGNAL HEAD, L.E.D., 1-FACE, 3-SECTION, MAST ARM MOUNTED	EACH	2
SIGNAL HEAD, L.E.D., 1-FACE, 4-SECTION, MAST ARM MOUNTED	EACH	2
SIGNAL HEAD, L.E.D., 1-FACE, 5-SECTION, MAST ARM MOUNTED	EACH	1
SIGNAL HEAD, L.E.D., 2-FACE, 3-SECTION, BRACKET MOUNTED	EACH	1
SIGNAL HEAD, L.E.D., 2-FACE, 1-3 SECTION, 1-4 SECTION, BRACKET MOUNTED	EACH	1
SIGNAL HEAD, L.E.D., 2-FACE, 1-4 SECTION, BRACKET MOUNTED	EACH	1
SIGNAL HEAD, L.E.D., 3-FACE, 2-3 SECTION, 1-5 SECTION, BRACKET MOUNTED	EACH	1
PEDESTRIAN SIGNAL HEAD, L.E.D., 1-FACE, BRACKET MOUNTED	EACH	2
PEDESTRIAN SIGNAL HEAD, L.E.D., 2-FACE, BRACKET MOUNTED	EACH	2
SERVICE INSTALLATION, POLE MOUNT	EACH	1

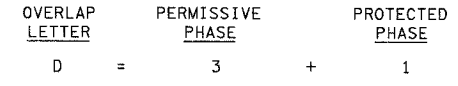
CONTROLLER SEQUENCE



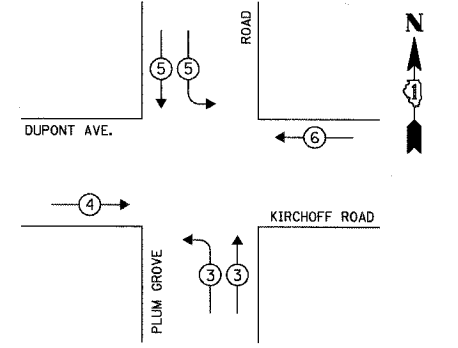
- LEGEND
- [Symbol] DUAL ENTRY PHASE
  - [Symbol] SINGLE ENTRY PHASE
  - [Symbol] OVERLAP
  - [Symbol] PEDESTRIAN PHASE
  - [Symbol] \* NUMBER REFERS TO ASSOCIATED PHASE

NOTE: PHASE 3 AND 4 SHALL BE SPLIT PHASE OPERATION

PHASE DESIGNATION DIAGRAM



EMERGENCY VEHICLE PREEMPTION SEQUENCE



PROPOSED EMERGENCY VEHICLE PREEMPTORS

EMERGENCY VEHICLE PREEMPTOR	3	4	5	6
MOVEMENT	[Symbol]	[Symbol]	[Symbol]	[Symbol]

I.D.O.T. TRAFFIC SIGNAL INSTALLATION ELECTRICAL SERVICE REQUIREMENTS

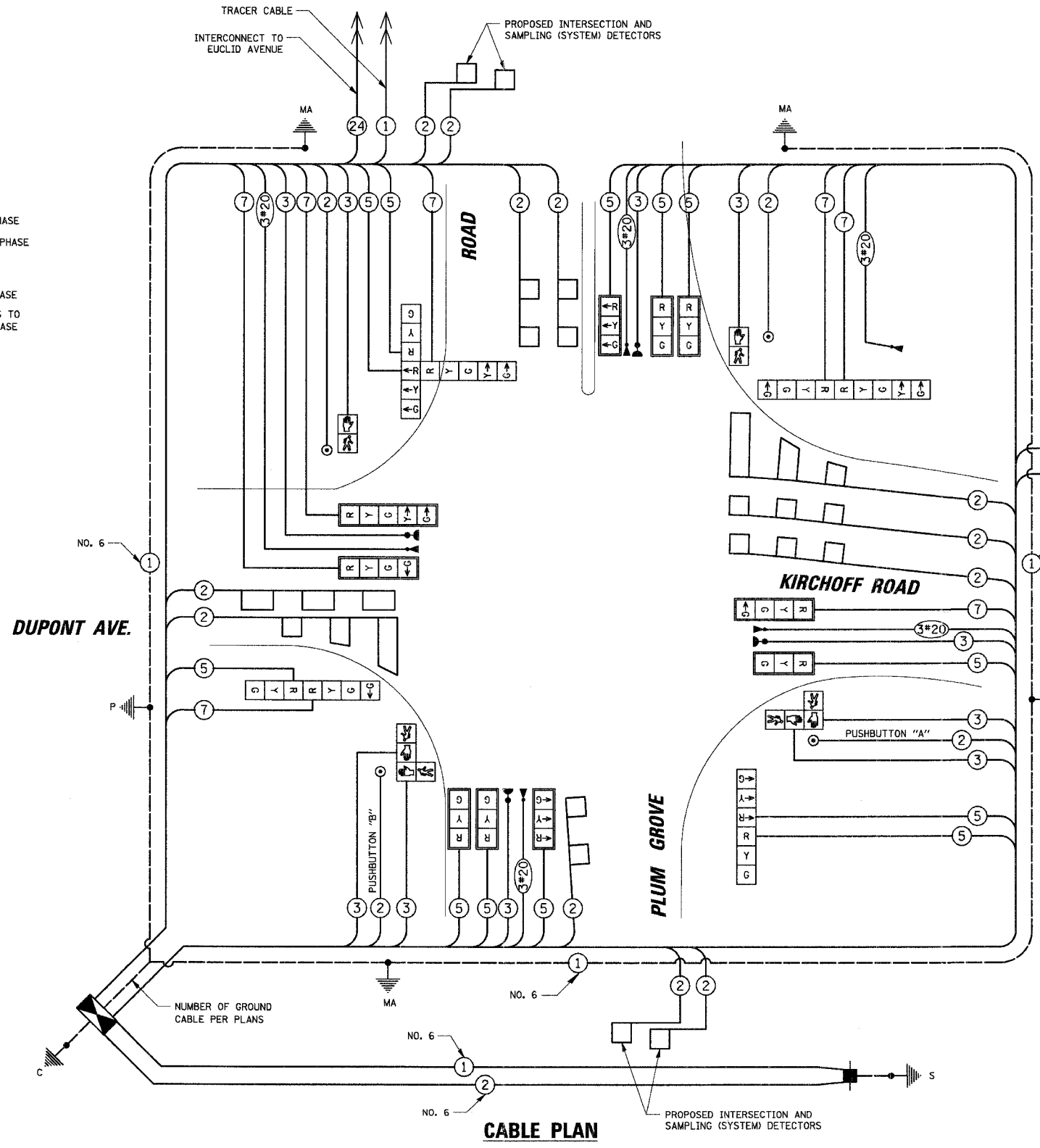
TYPE	NO. OF LAMPS	WATTAGE X INCAND.	LED	% OPERATION	TOTAL WATTAGE
SIGNAL (RED)	19	17	0.50		161.50
(YELLOW)	19	25	0.25		118.75
(GREEN)	19	15	0.25		71.25
ARROW	10	12	0.10		12.00
PED. SIGNAL	6	25	1.00		150.00
CONTROLLER	1	100	1.00		100.00
ILLUM. SIGN	-	25	0.05		-

FLASHER 0.50 -  
ENERGY COSTS TO: TOTAL = 613.50

CITY OF ROLLING MEADOWS  
3600 KIRCHOFF ROAD  
ROLLING MEADOWS, IL 60008  
ENERGY SUPPLY: CONTACT: JOAN COOK  
PHONE: (847) 816-5461  
COMPANY: COMED

FOUNDATION (DEPTH)	FT. (m)	CABLE SLACK	FT. (m)	VERTICAL	FT. (m)
TYPE A - POST	4 (1.2)	HANDHOLE	6.5 (2.0)	ALL FOUNDATIONS	3.5 (1.0)
D - CONTROLLER	4 (1.2)	DOUBLE HANDHOLE	13 (4.0)	MAST ARM (L) POLE	20'H-2' =
C - M. ARM POLE		SIGNAL POST	2 (1.0)		(6m+L-0.6m) =
24" (600mm)	10 (3.0)	CONTROLLER CAB.	1 (0.5)	BRACKET MOUNTED	13 (4.0)
30" (750mm)	15 (4.6)	FIBER OPTIC	13 (4.0)	PED. PUSHBUTTON	4 (1.2)
		ELECTRIC SERVICE	1 (0.5)	ELECTRIC SERVICE	13.5 (4.1)
		GROUND CABLE	1 (0.5)	SERVICE TO GROUND	13.5 (4.1)
				POST MOUNTED	6 (1.8)

CABLE PLAN



NOTE: PUSHBUTTON "A" SHALL PLACE A CALL IN PHASES 2 AND 3.  
PUSHBUTTON "B" SHALL PLACE A CALL IN PHASES 3 AND 6.

NOTE: THE TRAFFIC SIGNAL CONTROLLER EQUIPMENT FOR THIS PROJECT SHALL BE "ECONOLITE" TO MATCH THE EXISTING ADJACENT SYSTEM.

REVISIONS

NAME	DATE

ILLINOIS DEPARTMENT OF TRANSPORTATION  
SCHEDULE OF QUANTITIES, CABLE PLAN AND PHASE DESIGNATION DIAGRAM

PLUM GROVE ROAD AND KIRCHOFF RD. / DUPONT AVE.  
ROLLING MEADOWS, ILLINOIS  
SCALE: N.T.S. DRAWN BY: FPB/FCP  
DESIGNED BY: ABR  
DATE: 6/8/2006 CHECKED BY: GMZ

CHRISTOPHER B. BURKE ENGINEERING LTD.  
 9875 West Higgins Road, Suite 600  
 Rosemont, Illinois 60018  
 (847) 823-0500

PROFILE  
 DATE: \_\_\_\_\_ BY: \_\_\_\_\_  
 REVISIONS  
 NO. \_\_\_\_\_ DATE: \_\_\_\_\_ BY: \_\_\_\_\_  
 NO. \_\_\_\_\_ DATE: \_\_\_\_\_ BY: \_\_\_\_\_