

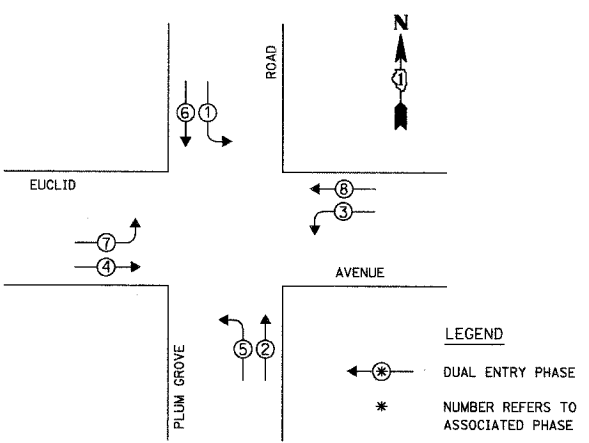
F.A. RTE.	SECTION	COUNTY	TOTAL SHEETS	SHEET NO.
2585	97-00071-00-PV	COOK	116	73
STA.	TO STA.			
FED. ROAD DIST. NO.	ILLINOIS FED. AID PROJECT			

DATE	NO.	DESCRIPTION

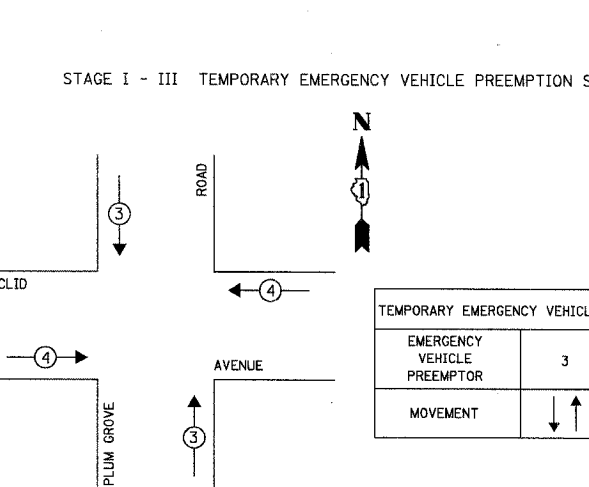
CHRISTOPHER B. BURKE ENGINEERING LTD.  
 9575 West Higgins Road, Suite 600  
 Rosemont, Illinois 60018  
 (847) 823-0500

DATE	BY	DESCRIPTION

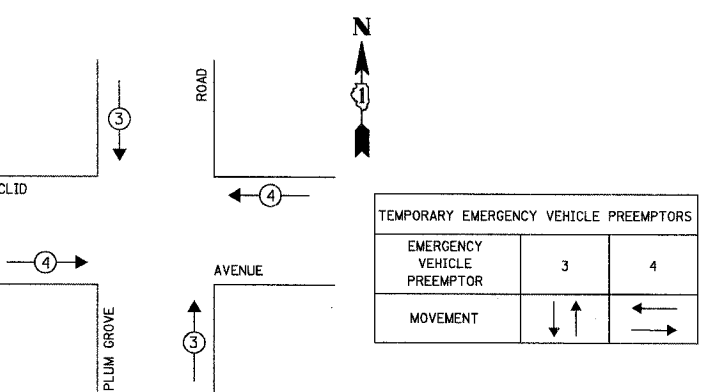
STAGE I - III TEMPORARY CONTROLLER SEQUENCE



STAGE I - III TEMPORARY PHASE DESIGNATION DIAGRAM



STAGE I - III TEMPORARY EMERGENCY VEHICLE PREEMPTION SEQUENCE



I.D.O.T. TRAFFIC SIGNAL INSTALLATION ELECTRICAL SERVICE REQUIREMENTS					TOTAL WATTAGE
TYPE	NO. OF LAMPS	WATTAGE	INCAND. LED x % OPERATION		
SIGNAL (RED)	12	135		0.50	810.00
(YELLOW)	12	135		0.25	405.00
(GREEN)	12	135		0.25	405.00
ARROW	16	135		0.10	216.00
PED. SIGNAL	---	90		1.00	---
CONTROLLER	1	100		1.00	100.00
ILLUM. SIGN	---	252		0.05	---
FLASHER	---			0.50	---
ENERGY COSTS TO:				TOTAL =	1936.00

NOTES:  
 1. THE TRAFFIC SIGNAL CONTROLLER EQUIPMENT FOR THIS PROJECT SHALL BE "ECONOLITE" TO MATCH THE EXISTING ADJACENT SYSTEM.  
 2. ALL VIDEO DETECTION ZONES ARE TO BE REDEFINED DURING EACH STAGE OF CONSTRUCTION AND ARE INCIDENTAL OF THE TEMPORARY TRAFFIC INSTALLATION.

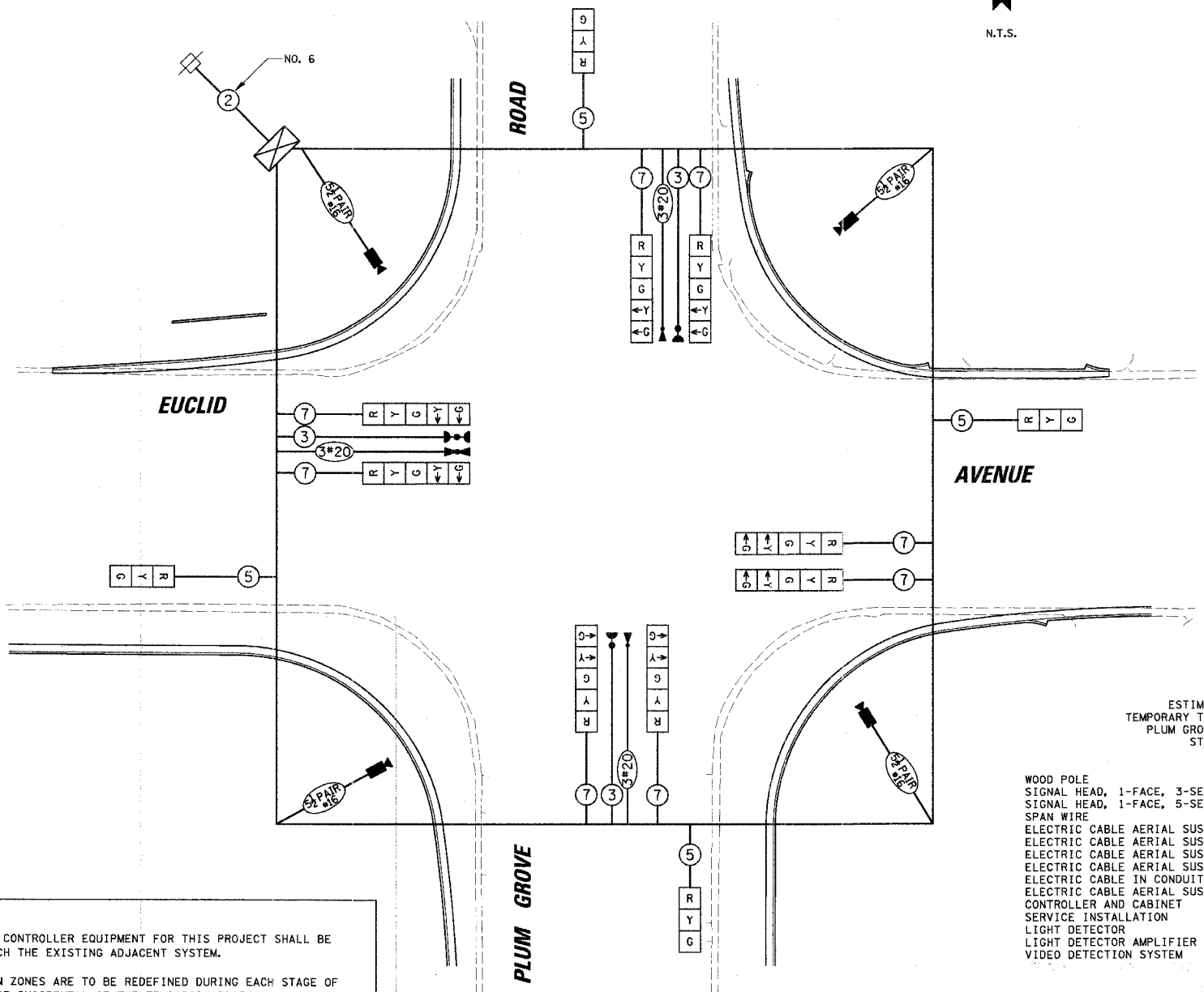
FOUNDATION (DEPTH)	FT. (m)	CABLE SLACK	FT. (m)	VERTICAL	FT. (m)
TYPE A - POST	4 (1.2)	HANDHOLE	6.5 (2.0)	ALL FOUNDATIONS	3.5 (1.0)
D - CONTROLLER	4 (1.2)	DOUBLE HANDHOLE	13 (4.0)	MAST ARM (L) POLE	20'-H-2"
C - M. ARM POLE		SIGNAL POST	2 (1.0)		(6m+L-0.6m)
24" (600mm)	10 (3.0)	CONTROLLER CAB.	1 (0.5)	BRACKET MOUNTED	13 (4.0)
30" (750mm)	15 (4.6)	FIBER OPTIC	13 (4.0)	PED. PUSHBUTTON	4 (1.2)
		ELECTRIC SERVICE	1 (0.5)	ELECTRIC SERVICE	13.5 (4.1)
		GROUND CABLE	1 (0.5)	SERVICE TO GROUND	13.5 (4.1)
				POST MOUNTED	6 (1.8)

ILLINOIS DEPARTMENT OF TRANSPORTATION  
 DIVISION OF HIGHWAY/DISTRICT 1  
 201 WEST CENTER COURT/SCHAUMBURG, ILLINOIS 60196-1096  
 ENERGY SUPPLY: CONTACT: JOAN COOK  
 PHONE: (847) 816-5461  
 COMPANY: COMMONWEALTH EDISON



TEMPORARY CABLE DIAGRAM LEGEND

- [R] TEMPORARY TRAFFIC SIGNAL SECTION OR PEDESTRIAN SIGNAL SECTION 12" (300mm)
- [X] TEMPORARY CONTROLLER CABINET
- [S] TEMPORARY SERVICE INSTALLATION
- (5) INDICATES NUMBER OF CONDUCTORS IN CABLE. ALL CONDUCTORS TO BE NUMBER 14 AWG WIRE UNLESS OTHERWISE NOTED.
- [E] EMERGENCY VEHICLE LIGHT DETECTOR
- [C] CONFIRMATION BEACON
- [V] VEHICLE DETECTOR, INDUCTION LOOP
- [P] PEDESTRIAN PUSHBUTTON DETECTOR
- [12"] 12" (300mm) PEDESTRIAN SIGNAL SECTION
- [M] MACHINE VISION PROCESSOR



ESTIMATED BILL OF MATERIALS  
 TEMPORARY TRAFFIC SIGNAL INSTALLATION  
 PLUM GROVE ROAD AT EUCLID AVENUE  
 STAGES I, II AND III

ITEM	UNIT	QUANTITY
WOOD POLE	EACH	5
SIGNAL HEAD, 1-FACE, 3-SECTION, SPAN WIRE MOUNTED	EACH	4
SIGNAL HEAD, 1-FACE, 5-SECTION, SPAN WIRE MOUNTED	EACH	4
SPAN WIRE	FOOT	620
ELECTRIC CABLE AERIAL SUSPENDED, SIGNAL, NO. 14 3C	FOOT	390
ELECTRIC CABLE AERIAL SUSPENDED, SIGNAL, NO. 14 5C	FOOT	1090
ELECTRIC CABLE AERIAL SUSPENDED, SIGNAL, NO. 14 7C	FOOT	2170
ELECTRIC CABLE AERIAL SUSPENDED, COMMUNICATION, NO. 16, 5 1/2 PAIR	FOOT	580
ELECTRIC CABLE IN CONDUIT, SERVICE, NO. 6 2C	FOOT	210
ELECTRIC CABLE AERIAL SUSPENDED, NO. 20 3C, TWISTED, SHIELDED	FOOT	390
CONTROLLER AND CABINET	EACH	1
SERVICE INSTALLATION	EACH	1
LIGHT DETECTOR	EACH	3
LIGHT DETECTOR AMPLIFIER	EACH	1
VIDEO DETECTION SYSTEM	EACH	1

REVISIONS	
NAME	DATE

ILLINOIS DEPARTMENT OF TRANSPORTATION  
**TEMPORARY CABLE PLAN, TEMPORARY PHASE DESIGNATION DIAGRAM AND TEMPORARY EMERGENCY VEHICLE PREEMPTION SEQUENCE**  
 STAGE I - III  
 PLUM GROVE ROAD AND EUCLID AVENUE  
 ROLLING MEADOWS, ILLINOIS  
 SCALE: N.T.S. DRAWN BY: FPB/FCP  
 DESIGNED BY: ABR  
 CHECKED BY: GMZ  
 DATE: 6/8/2006