

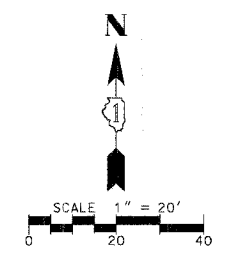
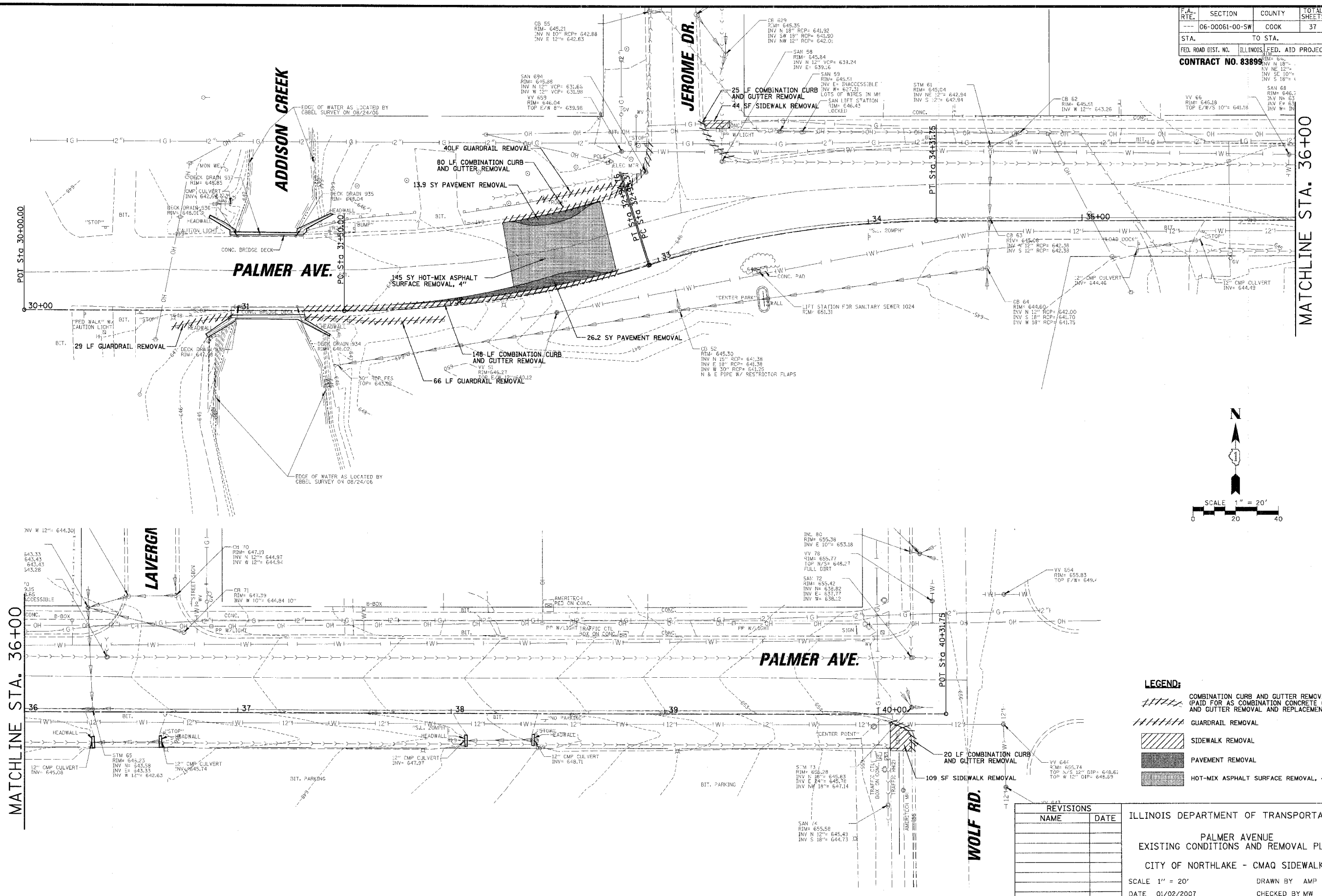
DATE: _____ BY: _____
 REVISIONS: _____
 PROFILE PLOTTED: _____
 NOTE BOOK: _____
 STRUCTURE NOTATIONS: _____

DATE: _____ BY: _____
 REVISIONS: _____
 PROFILE PLOTTED: _____
 NOTE BOOK: _____
 STRUCTURE NOTATIONS: _____

CHRISTOPHER B. BURKE ENGINEERING LTD.
 9675 West Higgins Road, Suite 600
 Rosemont, Illinois 60018
 (847) 823-0500



F.A. RTE.	SECTION	COUNTY	TOTAL SHEETS	SHEET NO.
---	06-00061-00-SW	COOK	37	11
STA. TO STA.		ILLINOIS FED. AID PROJECT		
FED. ROAD DIST. NO.		CONTRACT NO. 83899		



LEGEND:

	COMBINATION CURB AND GUTTER REMOVAL (PAID FOR AS COMBINATION CONCRETE CURB AND GUTTER REMOVAL AND REPLACEMENT)
	GUARDRAIL REMOVAL
	SIDEWALK REMOVAL
	PAVEMENT REMOVAL
	HOT-MIX ASPHALT SURFACE REMOVAL, 4"

REVISIONS	
NAME	DATE

ILLINOIS DEPARTMENT OF TRANSPORTATION
 PALMER AVENUE
 EXISTING CONDITIONS AND REMOVAL PLAN
 CITY OF NORTHLAKE - CMAQ SIDEWALKS
 SCALE 1" = 20'
 DATE 01/02/2007
 DRAWN BY AMP
 CHECKED BY MW