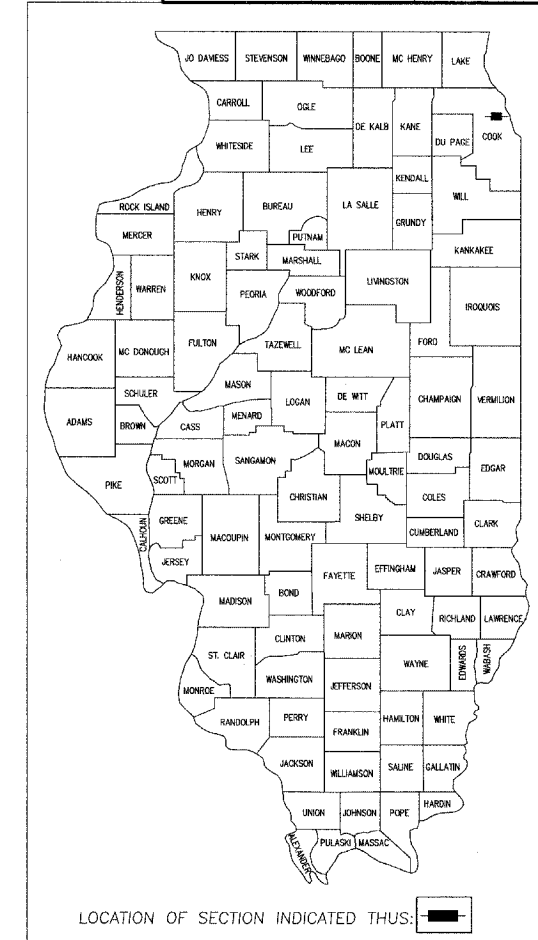


SHEET NO. INDEX OF SHEETS

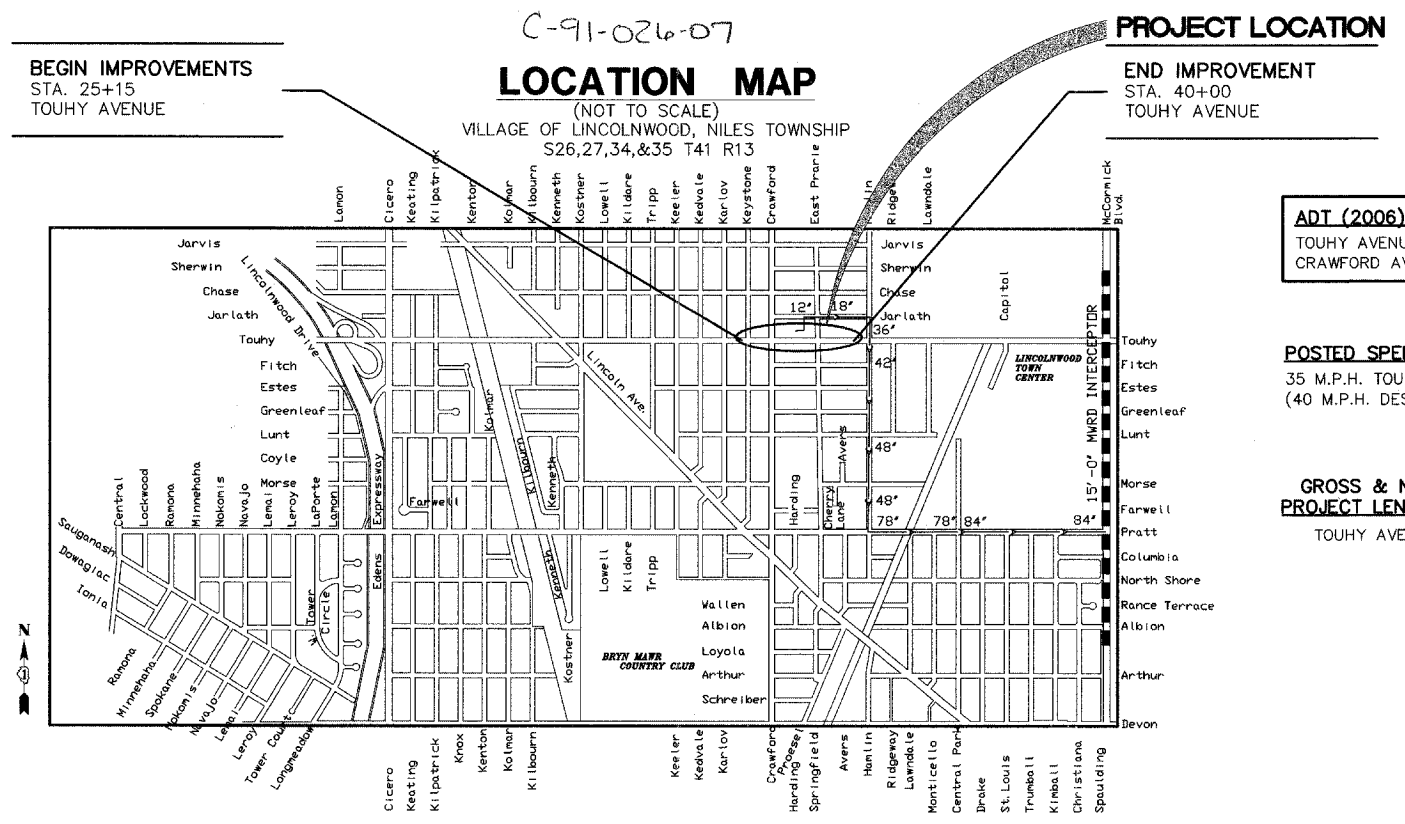
1	TITLE SHEET
2	GENERAL NOTES
3	SUMMARY OF QUANTITIES
4	TYPICAL CROSS SECTIONS
5	TRAFFIC CONTROL PLAN
6-8	EXISTING CONDITIONS / DEMOLITION PLAN
9	IMPROVEMENTS PLAN STA. 20+15 TO STA. 30+50
10	IMPROVEMENTS PLAN STA. 30+50 TO STA. 36+00
11	IMPROVEMENTS PLAN STA. 36+00 TO STA. 40+00
12	PAVEMENT MARKING PLAN
13-17	DETAILS
18-25	LIGHTING PLAN AND DETAILS
26-33	LANDSCAPE PLAN AND DETAILS
34-36	IRRIGATION PLAN AND DETAILS

**STATE OF ILLINOIS DEPARTMENT OF TRANSPORTATION
DIVISION OF HIGHWAYS
PLANS FOR PROPOSED FEDERAL AID HIGHWAY
FAU# 1340 TOUHY AVE.
KEYSTONE AVE. TO EAST PRAIRIE AVE.
SECTION# 06 - 00048 - 00 -RS
PROJECT# TE-00D1(702)
RESURFACING, LANDSCAPING & SCENIC BEAUTIFICATION
COOK COUNTY**

P.A.U. R.T.E.	SECTION	COUNTY	TOTAL SHEETS	SHEET NO.
1340	06-00048-00-RS	COOK	36	1
COVER SHEET				
ILLINOIS				



COVER SHEET

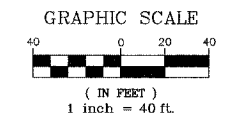
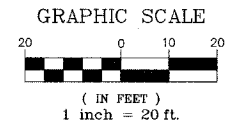


THIS PROJECT IS LOCATED IN THE VILLAGE OF LINCOLNWOOD

FEDERAL AID DESIGN ENGINEER: ABIGAIL WILGREEN 847-705-4233

SAFETY IS THE SOLE RESPONSIBILITY OF THE CONTRACTOR

JOINT UTILITY LOCATING INFORMATION FOR EXCAVATORS
Call 48 hours before you dig (Excluding Sat., Sun., & Holidays)
1-800-892-0123



- BENCHMARK INFORMATION:**
- BM # 69 - VILLAGE OF LINCOLNWOOD BENCHMARK AT NORTH END CONCRETE BASE OF LIGHT POLE AT SOUTHEAST CORNER OF KARLOV & TOUHY ELEVATION: 605.530
 - BM # 71 - VILLAGE OF LINCOLNWOOD BENCHMARK AT UPPER NORTHWEST FLANGE BOLT ON HYDRANT AT NORTHWEST CORNER OF CRAWFORD & TOUHY ELEVATION: 604.655
 - BM # 73 - VILLAGE OF LINCOLNWOOD BENCHMARK AT EAST END CONCRETE BASE OF LIGHT POLE AT NORTHEAST CORNER OF SHERWIN & EAST PRAIRIE ELEVATION: 603.202
 - BM # 84 - VILLAGE OF LINCOLNWOOD BENCHMARK AT NORTHWEST FLANGE BOLT ON HYDRANT AT NORTHWEST CORNER OF EAST PRAIRIE & ESTES ELEVATION: 601.020

CONTRACT NO. 83902

COPYRIGHT NOTICE
This drawing is the property of Gewalt-Hamilton Assoc., Inc. and is not to be used for any purpose other than the specific project and site named herein, and cannot be reproduced in any manner without the express written permission from Gewalt-Hamilton Associates, Inc.

ROADWAY PLANS PREPARED BY: SHEETS 1 THRU 17

GEWALT HAMILTON ASSOCIATES, INC.
Consulting Engineers & Surveyors
850 Forest Edge Drive
Verona Hills, IL 60061
847-478-9700
FAX: 847-478-9701

SIGNATURE: *Steven D. Berecz*
NAME: STEVEN D. BEREZ, P.E.
LICENSE EXPIRES: 11/30/2007

ELECTRICAL ENGINEERING PLANS BY: SHEETS 18 THRU 25

KJWW Engineering Consultants
Electrical Engineer

1771 West Diehl Road, Suite 300
Naperville, IL 60563
630-527-2320

SIGNATURE: *Jeffrey C. Pratt*
NAME: JEFFREY C. PRATT
LICENSE EXPIRES: NOVEMBER 30, 2007

LANDSCAPE ARCHITECTURE PLANS BY: SHEETS 26 THRU 36

Land Design Collaborative, Inc.
Landscape Architect

James C. Gamble
5142 Main Street
Sikeston, Illinois 60077
847-329-9777

SIGNATURE: *James C. Gamble*
NAME: JAMES C. GAMBLE
LANDSCAPE ARCHITECT
ILLINOIS LICENSE NO. 157-00002
LICENSE EXPIRES: 6/1/07

PRINTED BY THE AUTHORITY OF THE STATE OF ILLINOIS

STATE OF ILLINOIS
DEPARTMENT OF TRANSPORTATION
DIVISION OF HIGHWAYS

APPROVED: *FEBRUARY 7* 20 07
J. Wilby
VILLAGE OF LINCOLNWOOD, VILLAGE ADMINISTRATOR

APPROVED: *FEBRUARY 22* 2007
C. Holt *CHRISTOPHER HOLT*
DISTRICT 1 ENGINEER OF LOCAL ROADS & STREETS

RELEASING FOR BID BASED ON LIMITED REVIEW
February 22 2007
Diane O'Keefe
DEPUTY DIRECTOR OF HIGHWAYS, REGION 1 ENGINEER

PLANS PREPARED FOR:
VILLAGE OF LINCOLNWOOD
6900 LINCOLN AVENUE
LINCOLNWOOD, ILLINOIS 60712
PHONE: (847) 745-4717

APPROVED: *TIMOTHY C. WIBERG*
SIGNATURE: *J. Wilby*

REVISIONS	
NAME	DATE

2/22/07-115-0190