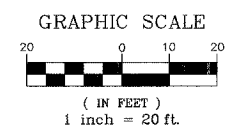
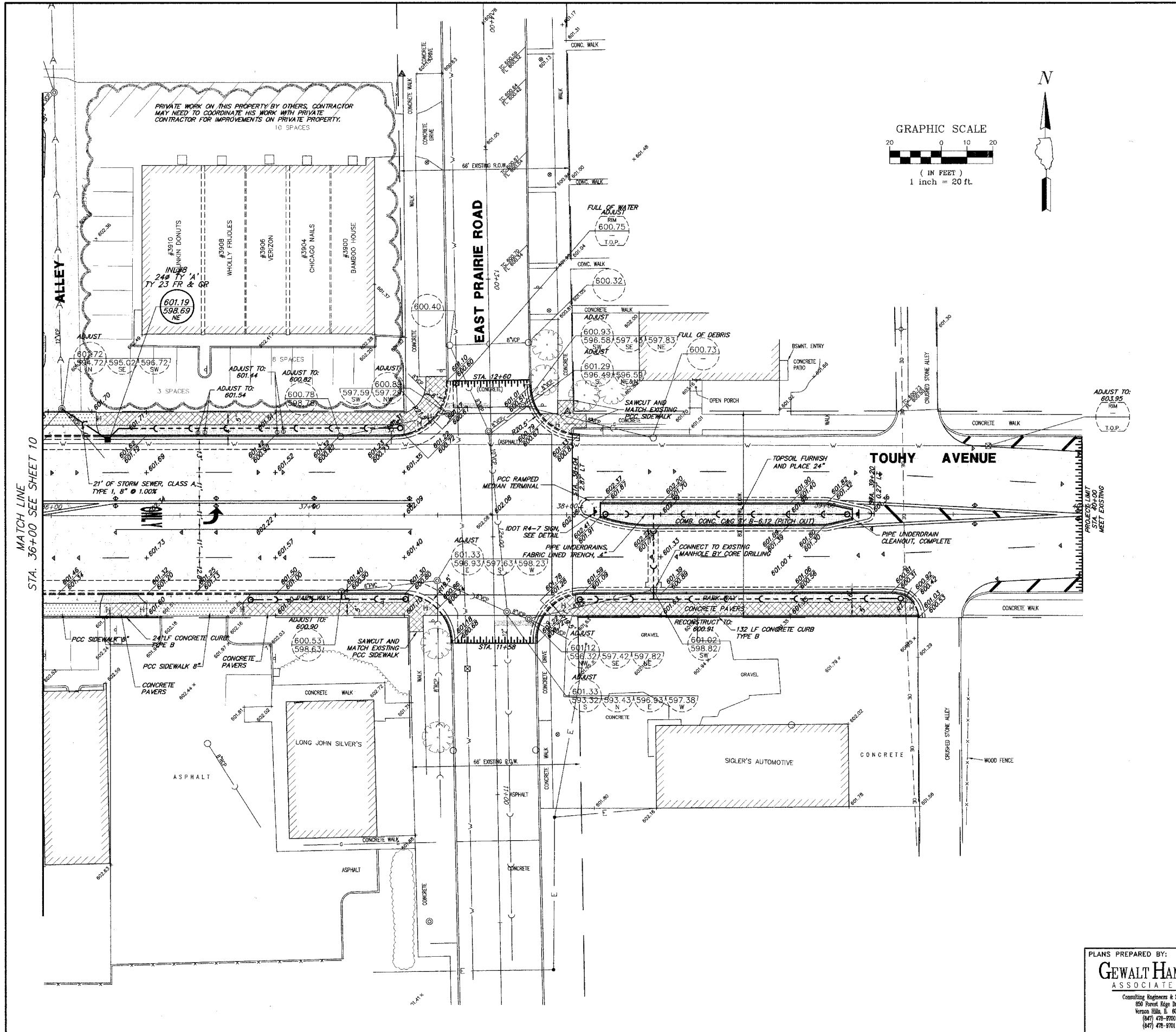


F.A.P. R.T.E.	SECTION	COUNTY	TOTAL SHEETS	SHEET NO.
1340	06-00048-00-RS	COOK	36	11
IMPRV PLAN STA. 36+00 TO 40+00				
ILLINOIS				



**PROPOSED CONDITIONS LEGEND**

- RESURFACING SECTION (TOUHY AND CRAWFORD AVE.)**  
 1 3/4" POLY. HOT-MIX ASPHALT SURFACE COURSE, MIX "F", N90  
 3/4" (& VARIES) POLY. LEVELING BINDER (MACHINE METHOD), IL-4.75, N50 (ALLEYS)  
 1 1/2" HOT-MIX ASPHALT SURFACE COURSE, MIX "C", N50  
 2" HOT-MIX ASPHALT BINDER COURSE, IL-19, N50
- FULL DEPTH PAVEMENT SECTION (TOUHY AVE. 4" PAVEMENT EDGE REPLACEMENT)**  
 1 3/4" POLY. HOT-MIX ASPHALT SURFACE COURSE, MIX "F", N90  
 3/4" POLY. LEVELING BINDER (MACHINE METHOD), IL-4.75, N50  
 10" HOT-MIX ASPHALT BASE COURSE, (2 LIFTS)  
 4" SUB-BASE GRANULAR MATERIAL, TYPE "B"
- FULL DEPTH PAVEMENT SECTION (PARKING ACCESS)**  
 2" HOT-MIX ASPHALT SURFACE COURSE, MIX "C", N50  
 3" HOT-MIX ASPHALT BINDER COURSE, IL-19, N50  
 8" SUB-BASE GRANULAR MATERIAL, TYPE "B"
- 7" CLASS D PATCH**
- COMBINATION CONC. CURB & GUTTER, B6.12**
- COMBINATION CONC. CURB & GUTTER, B6.12 DEPRESSED CURB SECTION**
- COMBINATION CONC. CURB & GUTTER, B6.12 PITCH OUT**
- CONCRETE PAVERS**  
 SEE LANDSCAPE PLANS
- P.C.C. DRIVEWAY SECTION**  
 P.C.C. DRIVEWAY PAVEMENT, 8"  
 AGGREGATE BASE COURSE, TYPE B, 6"
- P.C.C. SIDEWALK SECTION**  
 5" P.C.C. SIDEWALK (8" THROUGH DRIVEWAYS)  
 AGGREGATE BASE COURSE, TYPE B, 4"
- TOPSOIL, FURNISH AND PLACE, 24"**  
 TOPSOIL, FURNISH AND PLACE, 6"  
 SOODING, SALT TOLERANT (SEE LANDSCAPE PLAN)
- DETECTABLE WARNINGS OR UNIT PAVERS, TACTILE**

SAW CUTS WILL BE REQUIRED WHEN REMOVING PAVEMENT, CURB & GUTTER, AND SIDEWALK WHEN ADJACENT EXISTING PAVEMENT SURFACES ARE TO REMAIN AND WILL BE MEASURED FOR PAYMENT PER CONTRACT UNIT PRICE (LF)

SAW CUTS REQUIRED FOR PAVEMENT PATCHING ARE INCIDENTAL TO THE CONTRACT UNIT PRICE FOR CLASS D PATCHING

PLANS PREPARED BY:  
**GEWALT HAMILTON ASSOCIATES, INC.**  
 Consulting Engineers & Surveyors  
 850 Forest Edge Drive  
 Vernon Hills, IL 60061  
 (847) 478-9700  
 (847) 478-9701 Fax

REVISIONS	
NAME	DATE

ILLINOIS DEPARTMENT OF TRANSPORTATION  
**IMPROVEMENTS PLAN**  
**STA. 36+00 TO STA. 40+00**  
**BUSINESS DISTRICT IMPROVEMENTS**  
**TOUHY AVE. AND CRAWFORD AVE.**  
**SECTION # 06-00048-00-RS**

SCALE: 1" = 20'  
 DATE: 11-2-06

DRAWN BY: DSM  
 DESIGNED BY: DSM  
 CHECKED BY: SDB