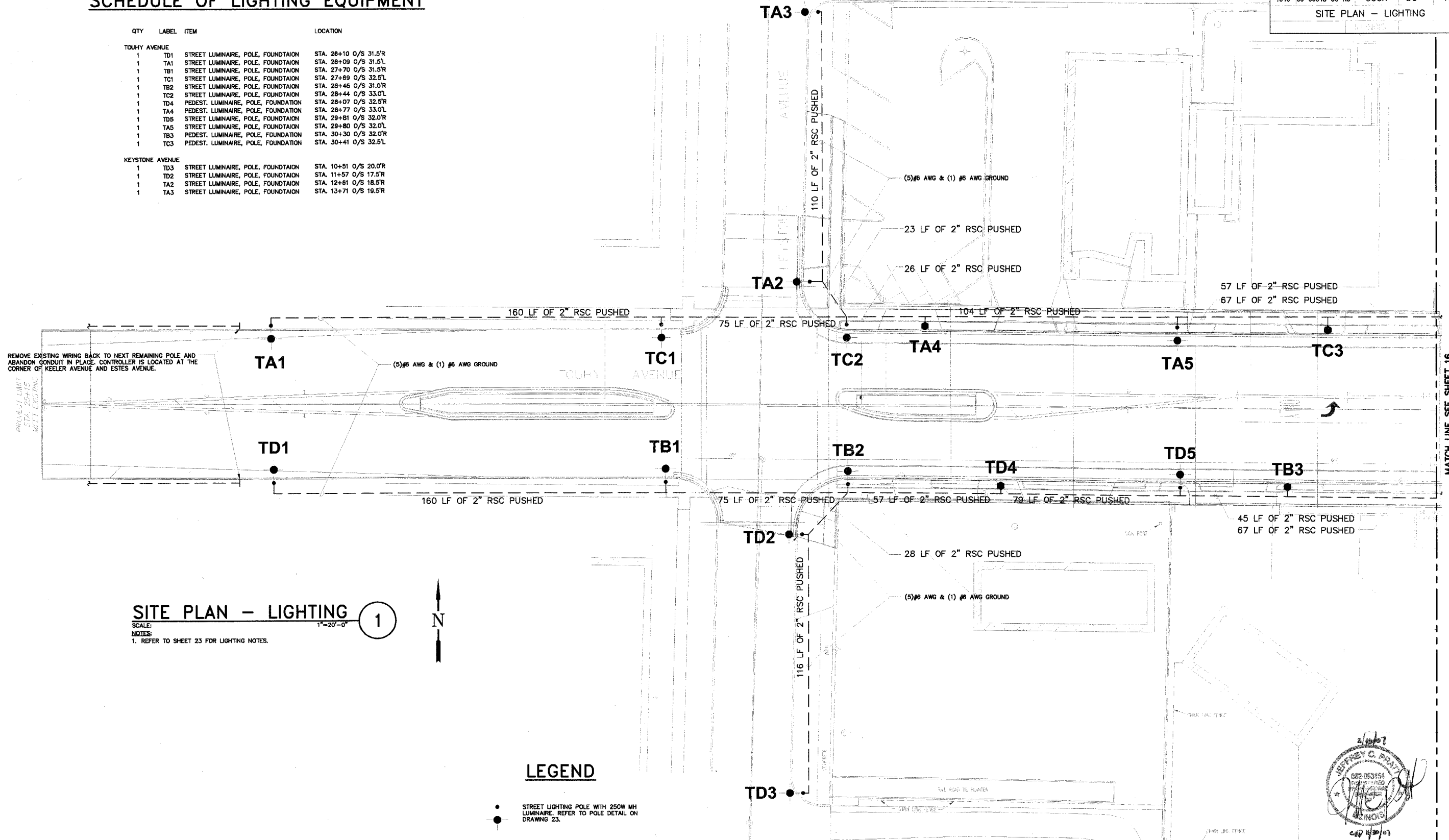
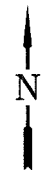


SCHEDULE OF LIGHTING EQUIPMENT

QTY	LABEL	ITEM	LOCATION
TOUHY AVENUE			
1	TD1	STREET LUMINAIRE, POLE, FOUNDATION	STA. 26+10 O/S 31.5'R
1	TA1	STREET LUMINAIRE, POLE, FOUNDATION	STA. 26+09 O/S 31.5'L
1	TB1	STREET LUMINAIRE, POLE, FOUNDATION	STA. 27+70 O/S 31.5'R
1	TC1	STREET LUMINAIRE, POLE, FOUNDATION	STA. 27+69 O/S 32.5'L
1	TB2	STREET LUMINAIRE, POLE, FOUNDATION	STA. 28+45 O/S 31.0'R
1	TC2	STREET LUMINAIRE, POLE, FOUNDATION	STA. 28+44 O/S 33.0'L
1	TD4	PEDEST. LUMINAIRE, POLE, FOUNDATION	STA. 28+07 O/S 32.5'R
1	TA4	PEDEST. LUMINAIRE, POLE, FOUNDATION	STA. 28+77 O/S 33.0'L
1	TD5	STREET LUMINAIRE, POLE, FOUNDATION	STA. 29+81 O/S 32.0'R
1	TA5	STREET LUMINAIRE, POLE, FOUNDATION	STA. 29+80 O/S 32.0'L
1	TB3	PEDEST. LUMINAIRE, POLE, FOUNDATION	STA. 30+30 O/S 32.0'R
1	TC3	PEDEST. LUMINAIRE, POLE, FOUNDATION	STA. 30+41 O/S 32.5'L
KEYSTONE AVENUE			
1	TD3	STREET LUMINAIRE, POLE, FOUNDATION	STA. 10+51 O/S 20.0'R
1	TD2	STREET LUMINAIRE, POLE, FOUNDATION	STA. 11+57 O/S 17.5'R
1	TA2	STREET LUMINAIRE, POLE, FOUNDATION	STA. 12+61 O/S 18.5'R
1	TA3	STREET LUMINAIRE, POLE, FOUNDATION	STA. 13+71 O/S 19.5'R



SITE PLAN - LIGHTING ①
 SCALE: 1"=20'-0"
 NOTES:
 1. REFER TO SHEET 23 FOR LIGHTING NOTES.



LEGEND

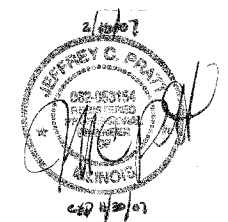
- STREET LIGHTING POLE WITH 250W MH LUMINAIRE. REFER TO POLE DETAIL ON DRAWING 23.
- PEDESTRIAN LIGHTING POLE WITH 50 W MH LUMINAIRE. REFER TO ORNAMENTAL LIGHTING DETAIL ON DRAWING 24.
- #6 AWG CONDUCTOR AND #6 AWG GROUND IN CONDUIT, A MINIMUM OF 48" BELOW GRADE. REFER TO DRAWING 21 FOR NUMBER OF CONDUCTORS UNLESS NOTED OTHERWISE.
- IDOT PAY ITEM
 #81700120 (EACH CONDUCTOR)
 #81018500 (PUSHED)
 #81000800 (TRENCH)

KJ ENGINEERING CONSULTANTS
 1771 W. BISHOP ROAD, SUITE 300
 NAPERVILLE, IL 60563
 630.517.2323 FAX: 630.527.2321
 www.kjeng.com PROJECT #06018500

PLANS PREPARED BY:
GEWALT HAMILTON ASSOCIATES, INC.
 Consulting Engineers & Surveyors
 850 Forest Ridge Court
 Vernon Hills, IL 60061
 (847) 418-9700
 (847) 418-9700 Fax

REVISIONS

NO.	DATE	DESCRIPTION



ILLINOIS DEPARTMENT OF TRANSPORTATION
SITE PLAN - LIGHTING
 BUSINESS DISTRICT IMPROVEMENTS
 TOUHY AVE. AND CRAWFORD AVE.
 SECTION # 06 - 00048 - 00 -RS

SCALE: N.T.S.
 DATE: 11-2-05

DRAWN BY: CFP
 DESIGNED BY: SWW
 CHECKED BY: SDB

I:\Projects\06-00048-00-RS\Drawings\06-00048-00-RS_SitePlan_Lighting.dwg Scale: 1"=20'-0" Thursday, February 15, 2007 9:40am By: rccy@ch2m

MATCH LINE SEE SHEET 16
 STA. 33+00