

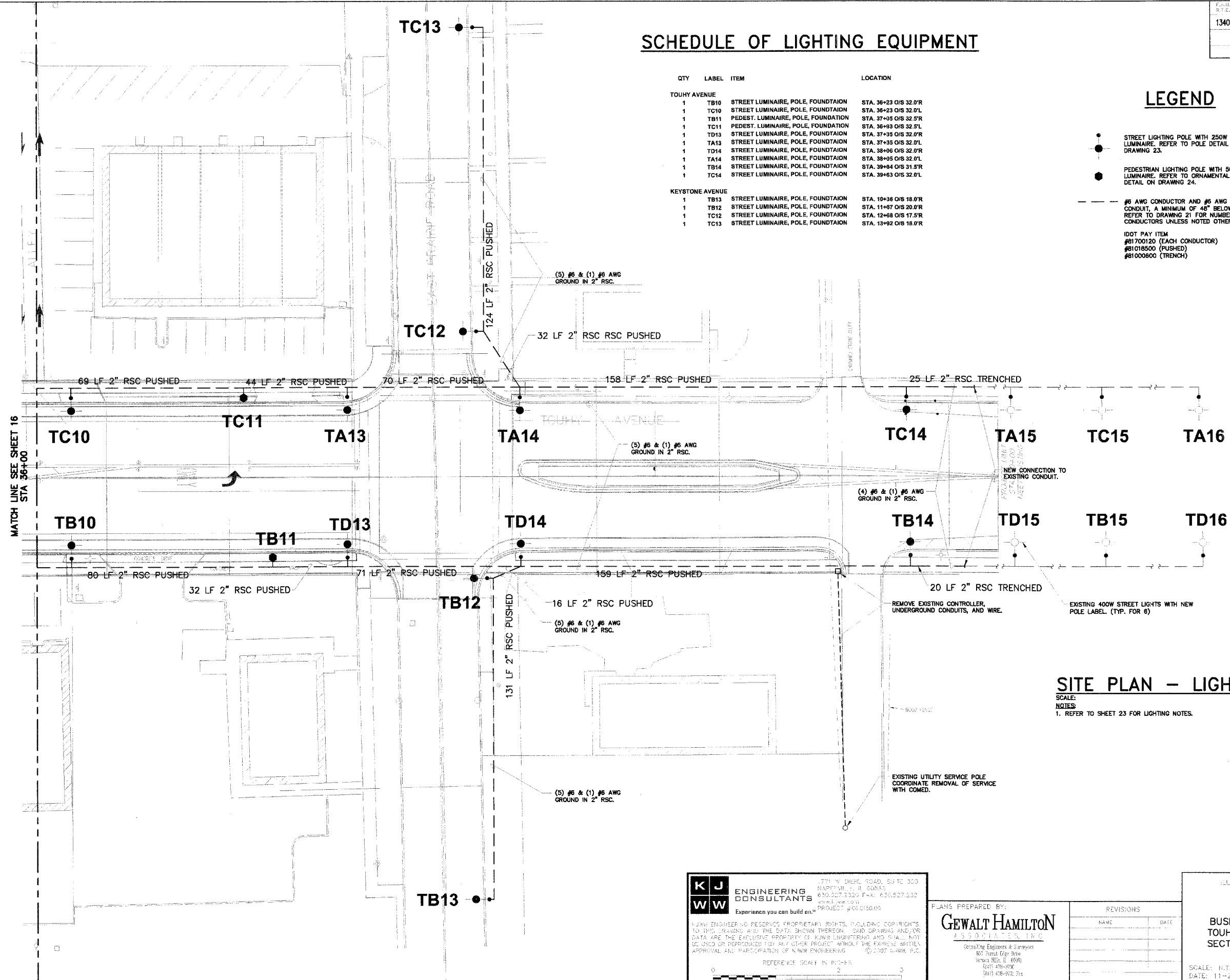
SCHEDULE OF LIGHTING EQUIPMENT

QTY	LABEL	ITEM	LOCATION
TOUHY AVENUE			
1	TB10	STREET LUMINAIRE, POLE, FOUNDATION	STA. 36+23 O/S 32.0'R
1	TC10	STREET LUMINAIRE, POLE, FOUNDATION	STA. 36+23 O/S 32.0'L
1	TB11	PEDEST. LUMINAIRE, POLE, FOUNDATION	STA. 37+05 O/S 32.5'R
1	TC11	PEDEST. LUMINAIRE, POLE, FOUNDATION	STA. 36+93 O/S 32.5'L
1	TD13	STREET LUMINAIRE, POLE, FOUNDATION	STA. 37+35 O/S 32.0'R
1	TA13	STREET LUMINAIRE, POLE, FOUNDATION	STA. 37+35 O/S 32.0'L
1	TD14	STREET LUMINAIRE, POLE, FOUNDATION	STA. 38+06 O/S 32.0'R
1	TA14	STREET LUMINAIRE, POLE, FOUNDATION	STA. 38+06 O/S 32.0'L
1	TB14	STREET LUMINAIRE, POLE, FOUNDATION	STA. 39+64 O/S 31.5'R
1	TC14	STREET LUMINAIRE, POLE, FOUNDATION	STA. 39+63 O/S 32.0'L
KEYSTONE AVENUE			
1	TB13	STREET LUMINAIRE, POLE, FOUNDATION	STA. 10+36 O/S 18.0'R
1	TB12	STREET LUMINAIRE, POLE, FOUNDATION	STA. 11+97 O/S 20.0'R
1	TC12	STREET LUMINAIRE, POLE, FOUNDATION	STA. 12+68 O/S 17.5'R
1	TC13	STREET LUMINAIRE, POLE, FOUNDATION	STA. 13+92 O/S 18.0'R

LEGEND

- STREET LIGHTING POLE WITH 250W MH LUMINAIRE. REFER TO POLE DETAIL ON DRAWING 23.
- PEDESTRIAN LIGHTING POLE WITH 50 W MH LUMINAIRE. REFER TO ORNAMENTAL LIGHTING DETAIL ON DRAWING 24.
- #6 AWG CONDUCTOR AND #6 AWG GROUND IN CONDUIT, A MINIMUM OF 48" BELOW GRADE. REFER TO DRAWING 21 FOR NUMBER OF CONDUCTORS UNLESS NOTED OTHERWISE.
- IDOT PAY ITEM
#81700120 (EACH CONDUCTOR)
#81018500 (PUSHED)
#81000600 (TRENCH)

MATCH LINE SEE SHEET 16 STA 36+00



SITE PLAN - LIGHTING 1

SCALE: 1"=20'-0"

NOTES:
1. REFER TO SHEET 23 FOR LIGHTING NOTES.

KJ ENGINEERING CONSULTANTS
777 N. DIERCK ROAD, SUITE 300
MADISON, IL 60555
630.527.2300 FAX: 630.527.2302
www.kjc.com PROJECT #08.0150.00

EXPERIENCE YOU CAN BUILD ON.SM

KJWW ENGINEERING CONSULTANTS PRESERVED PROPRIETARY RIGHTS, INCLUDING COPYRIGHTS, TO THIS DRAWING AND THE DATA SHOWN THEREON. SAID DRAWINGS AND/OR DATA ARE THE EXCLUSIVE PROPERTY OF KJWW ENGINEERING AND SHALL NOT BE USED OR REPRODUCED FOR ANY OTHER PROJECT WITHOUT THE EXPRESS WRITTEN APPROVAL AND PARTICIPATION OF KJWW ENGINEERING. © 2007 KJWW, P.C.

REFERENCE SCALE IN INCHES
0 1 2 3

PLANS PREPARED BY:

GEWALT HAMILTON ASSOCIATES, INC.
Consulting Engineers & Surveyors
800 Forest Edge Drive
Naperville, IL 60563
(708) 476-0700
(708) 476-0702 Fax

REVISIONS	
NAME	DATE

ILLINOIS DEPARTMENT OF TRANSPORTATION

SITE PLAN - LIGHTING

**BUSINESS DISTRICT IMPROVEMENTS
TOUHY AVE. AND CRAWFORD AVE.
SECTION # 06 - 00048 - 00 -RS**

SCALE: N.T.S.
DATE: 11-2-06

DRAWN BY: CEF
DESIGNED BY: SWP
CHECKED BY: SDR