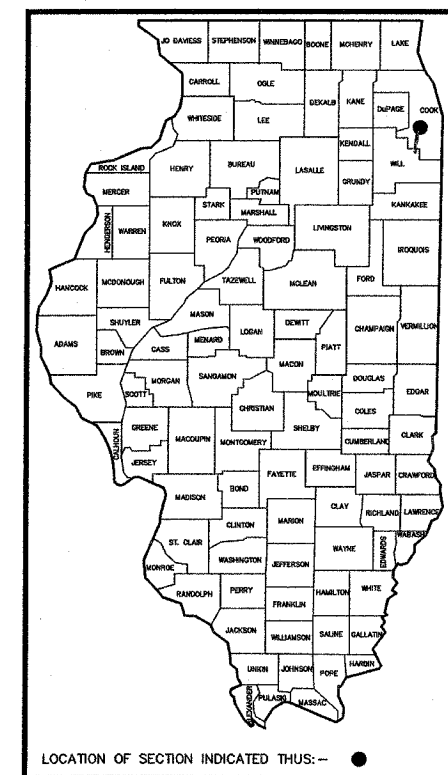


FAU RTE	SECTION	COUNTY	TOTAL SHEETS	SHEET NO.
VARIOUS	05-00059-00-RS	COOK	23	1

CONTRACT NO. 83903

# STATE OF ILLINOIS DEPARTMENT OF TRANSPORTATION DIVISION OF HIGHWAYS PLANS FOR PROPOSED FEDERAL AID URBAN PROJECT

VARIOUS ROUTES  
LAPP RESURFACING  
FEDERAL PROJECT HPP-3464(001)  
M.F.T. SECTION NO. 05-00059-00-RS  
VILLAGE OF SUMMIT  
COOK COUNTY  
JOB NO. C-91-221-06



### VILLAGE OF SUMMIT

APPROVED                      JANUARY 11,            20  07

VILLAGE PRESIDENT *Joseph...*

PASSED                      FEBRUARY 15, 2007

*Christopher Holt*  
DISTRICT #1 ENGINEER OF LOCAL ROADS & STREETS

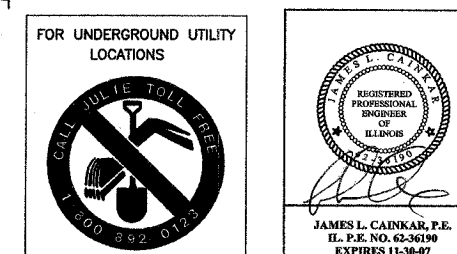
RELEASING FOR BID  
BASED ON LIMITED  
REVIEW                      February 16, 2007

*Diane O'Keefe*  
DEPUTY DIRECTOR OF HIGHWAYS, REGION #1 ENGINEER

PROJECT LOCATED IN THE  
VILLAGE OF SUMMIT

TOWNSHIP 38 NORTH  
RANGE 12 EAST  
LYONS TOWNSHIP

SEE PAGE 3 FOR  
DESIGN DETAILS

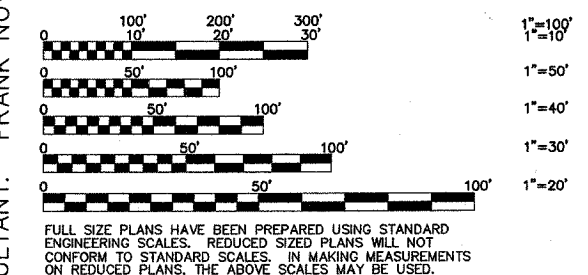


PRINTED BY THE AUTHORITY OF THE  
STATE OF ILLINOIS

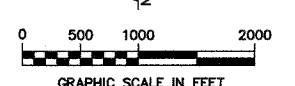
FNA JOB # 05442

- ### INDEX OF SHEETS
- 1.) COVER SHEET, INDEX OF SHEETS, LOCATION MAP, INDEX OF STATE STANDARDS
  - 2.) GENERAL NOTES AND SUMMARY OF QUANTITIES
  - 3.) TYPICAL CROSS SECTIONS, BITUMINOUS MIXTURES REQUIREMENT
  - 4.) PLAN: 76th AVE. - S. OF 64th ST. to 60th PL.
  - 5.) PLAN: 75th AVE. - 64th PL. to 60th PL.
  - 6.) PLAN: 74th AVE. - 64th PL. to 60th PL.
  - 7.) PLAN: 73rd AVE. - S. OF 63rd PL. to 60th ST.
  - 8.) PLAN: 63rd PL. - W. OF 76th AVE. to 74th AVE., 64th ST. - W. OF 76th AVE. to 74th AVE.
  - 9.) PLAN: 64th PL. - 75th AVE. to 74th AVE. 62nd ST. - ARCHER RD. to 76th AVE. 62nd ST. - 75th AVE. to HARLEM AVE.
  - 10.) PLAN: 62nd PL. - 76th AVE. to 63rd ST. CUT-OFF, 61st PL. - 76th AVE. to HARLEM AVE.
  - 11.) PLAN: 61st ST. - ARCHER RD. to 74th AVE. 60th PL. - 76th AVE. to 74th AVE.
  - 12.) PLAN: 56th PL. - ARCHER RD. to 73rd AVE. HARLEM DR. - 72nd PL. TO PARK AVE. 55th PL. - ARCHER RD. to 74th AVE.
  - 13.-17.) PLAN: PAVEMENT MARKING
  - 18.) DISTRICT ONE TYPICAL PAVEMENT MARKINGS
  - 19.) TRAFFIC CONTROL AND PROTECTION FOR SIDEROADS, INTERSECTIONS, AND DRIVEWAYS
  - 20.) CURB OR CURB AND GUTTER REMOVAL AND REPLACEMENT
  - 21.) FRAMES AND LIDS ADJUSTMENTS WITH MILLING
  - 22.) BUTT JOINT AND HOT-MIX ASPHALT TAPER DETAILS
  - 23.) PAVEMENT PATCHING FOR HOT-MIX ASPHALT SURFACED PAVEMENT

- ### STATE STANDARDS
- 000001-04 STANDARDS SYMBOLS, ABBREVIATIONS, AND PATTERNS
  - 442201-02 CLASS C AND D PATCHES
  - 606001-03 CONCRETE CURB AND COMBINATION CONCRETE CURB & GUTTER
  - 604001-02 FRAME & LIDS, TYPE 1
  - 701501-03 URBAN LANE CLOSURE, 2 L, 2 W UNDIVIDED
  - 701801-03 LANE CLOSURE, MULTILANE 1W OR 2W CROSSWALK OR SIDEWALK CLOSURE
  - 702001-06 TRAFFIC CONTROL DEVICES
  - 780001-01 TYPICAL PAVEMENT MARKINGS



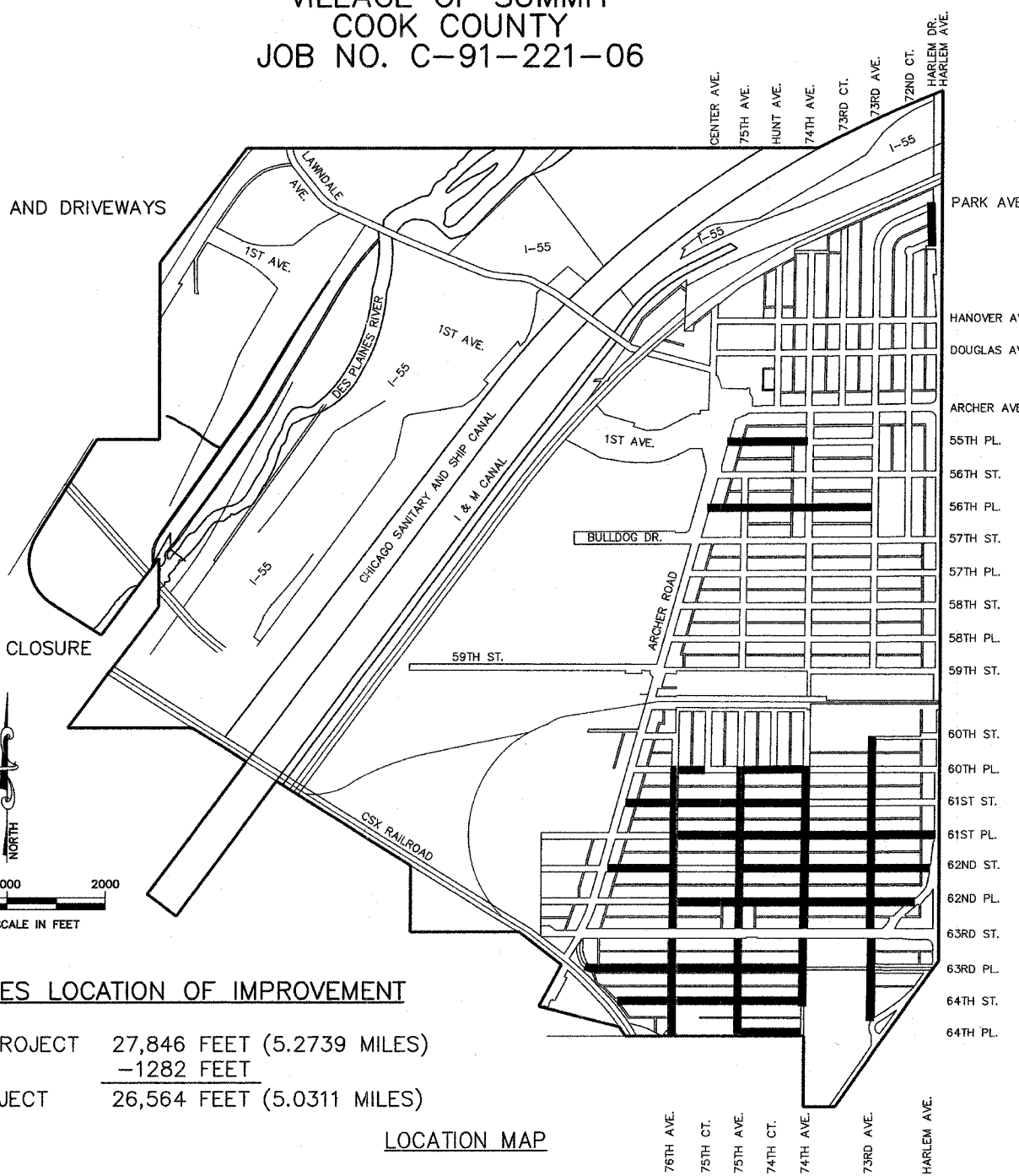
SEE SHEET 2 FOR  
ADT POSTED AND  
DESIGN SPEED



————— DENOTES LOCATION OF IMPROVEMENT

GROSS LENGTH OF PROJECT 27,846 FEET (5.2739 MILES)  
CONTRACT OMISSION -1282 FEET  
NET LENGTH OF PROJECT 26,564 FEET (5.0311 MILES)

LOCATION MAP



FEDERAL-AID DESIGN ENGINEER: ABIGAIL WILGREEN (847)705-4233  
CONSULTANT: FRANK NOVOTNY AND ASSOCIATES, INC. (630)887-8640

CONTRACT NO. 83903

R E V I S I O N S			
NO.	BY	DATE	DESCRIPTION
1	JLC	1/3/07	I.D.O.T. REVIEW