

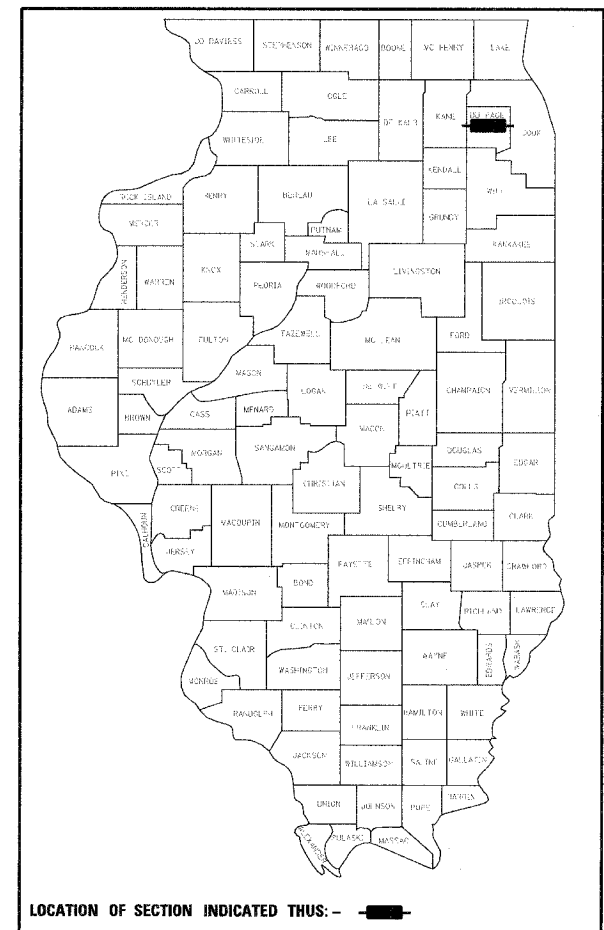
F.A.U. RTE.	SECTION	COUNTY	TOTAL SHEETS	SHEET NO.
2638	00-00139-00-RS	DUPAGE	68	1
PROJECT NO.: M-8003 (663)				
CONTRACT NO.: 83904				

FOR INDEX OF SHEETS, SEE SHEET NO. 2

FOR LIST OF STATE AND LOCAL STANDARDS, SEE SHEET NO. 2

STATE OF ILLINOIS  
DEPARTMENT OF TRANSPORTATION  
DIVISION OF HIGHWAYS  
**PLANS FOR PROPOSED  
FEDERAL AID PROJECT**

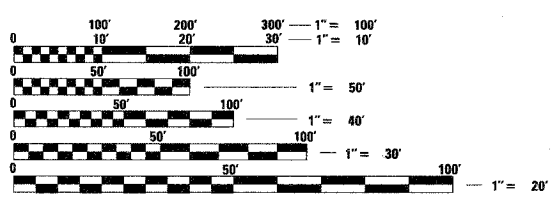
WESTMORE-MEYERS ROAD (FAU 2638)  
Section No.: 00-00139-00-RS  
Project No.: M-8003 (663)  
ROOSEVELT RD (IL RTE 38) TO ST. CHARLES RD  
ROADWAY RESURFACING & TRAFFIC SIGNAL MODERNIZATION  
DUPAGE COUNTY  
C-91-438-06



LOCATION OF SECTION INDICATED THUS: - [black rectangle] -

PROJECT LOCATED WITHIN THE VILLAGE OF LOMBARD

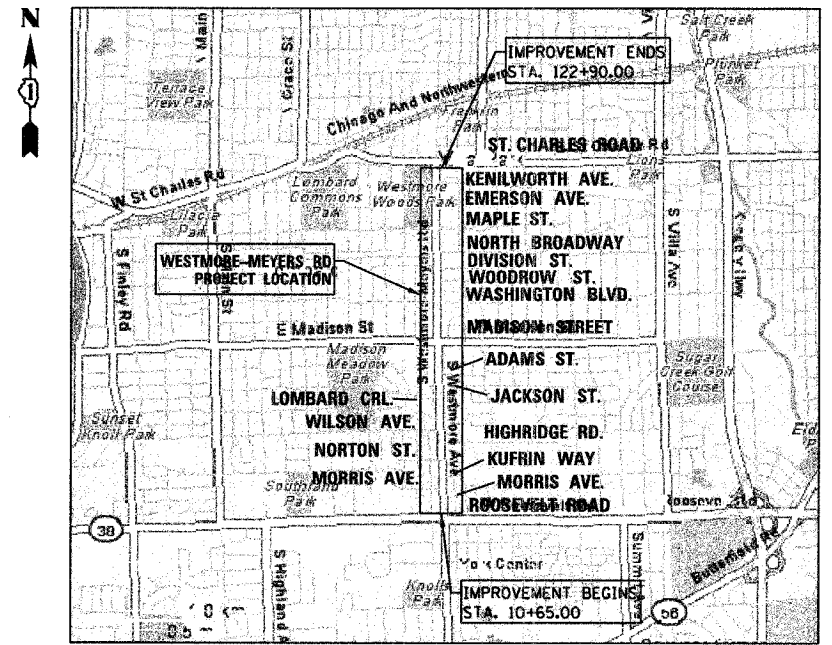
TRAFFIC DATA  
POSTED SPEED: 35MPH  
EXISTING ADT (2006): 21,200 VPD



FULL SIZE PLANS HAVE BEEN PREPARED USING STANDARD ENGINEERING SCALES. REDUCED SIZED PLANS WILL NOT CONFORM TO STANDARD SCALES. IN MAKING MEASUREMENTS ON REDUCED PLANS, THE ABOVE SCALES MAY BE USED.

J.U.L.I.E.  
JOINT UTILITY LOCATION INFORMATION FOR EXCAVATION  
1-800-892-0123

**CONTRACT NO. 83904**



**LOCATION MAP**

SCALE: 1" = .5 MILES

TOWNSHIP: 39N  
RANGE: 11E  
GROSS LENGTH OF PROJECT = 11,225 LINEAL FEET (2.13 MILES)  
NET LENGTH OF PROJECT = 11,225 LINEAL FEET (2.13 MILES)

IL DESIGN FIRM  
NO. 184-001210



EXP. 04/30/07

STATE OF ILLINOIS  
DEPARTMENT OF TRANSPORTATION  
DIVISION OF HIGHWAYS

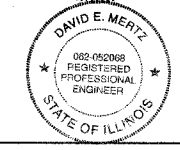
Approved: 01/23 2007  
*David A. Deibel*  
Village of Lombard, Village Engineer

Passed: FEBRUARY 22 2007  
*Christopher Holt*  
District 1 Engineer of Local Roads and Streets

Releasing for Bid Based on Limited Review: February 22 2007  
*Diane O'Keefe*  
Deputy Director of Highways, Region 1 Engineer



*Jennifer Morales-Tolentino*  
JENNIFER MORALES-TOLENTINO, P.E. ENGINEER  
ILLINOIS REGISTRATION No. 062-059182  
EXPIRATION DATE: 11/30/2007  
APPLIES TO SHEETS 1-38 AND 57-68



*David E. Mertz*  
DAVID E. MERTZ, P.E. ENGINEER  
ILLINOIS REGISTRATION No. 062-052068  
EXPIRATION DATE: 11/30/2007  
APPLIES TO SHEETS 39-56

FEDERAL-AID DESIGN ENGINEER: ABIGAIL WILGREEN 847-705-4233