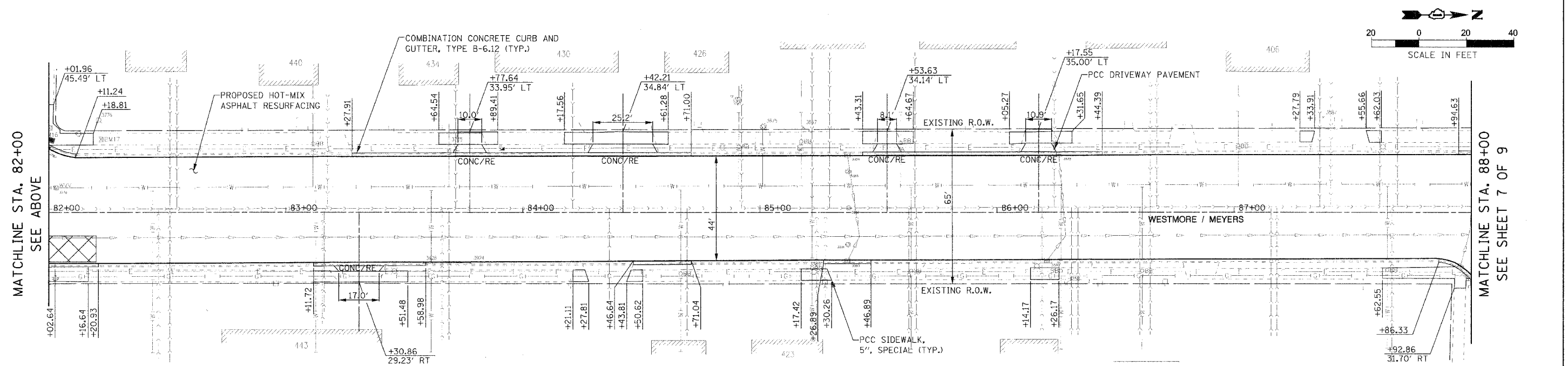
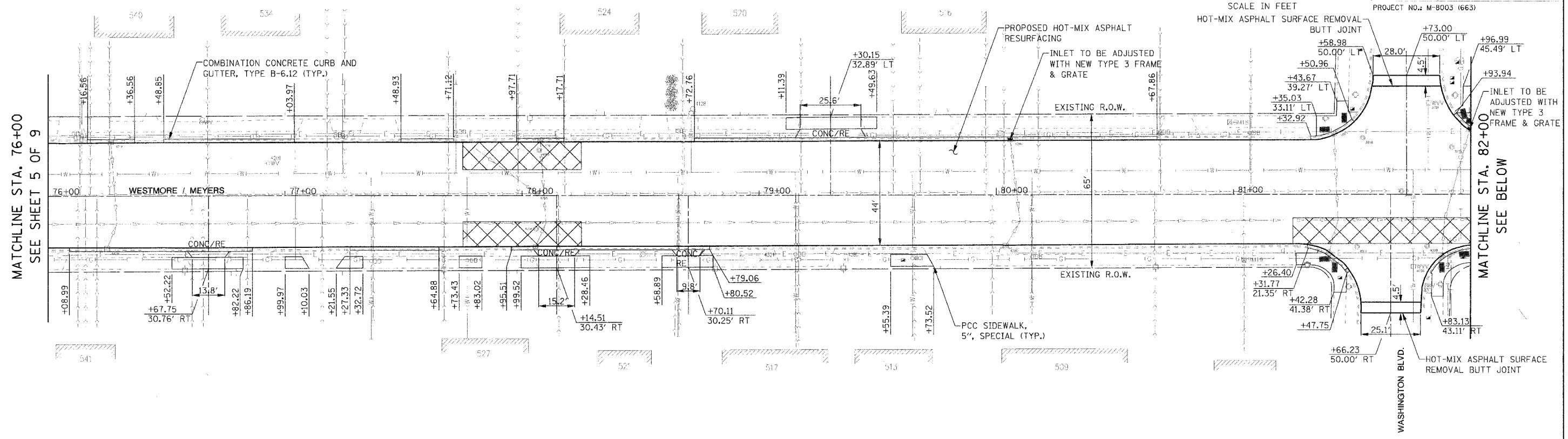
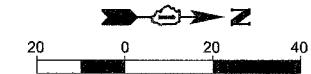


F.A.U. RTE.	SECTION	COUNTY	TOTAL SHEETS	SHEET NO.
2638	00-00139-00-RS	DUPAGE	68	23
STA. 76+00		TO STA. 88+00		
FED. ROAD DIST. NO.		ILLINOIS FED. AID PROJECT		
PROJECT NO.: M-8003 (663)				



MATCHLINE STA. 76+00
SEE SHEET 5 OF 9

MATCHLINE STA. 82+00
SEE BELOW

MATCHLINE STA. 82+00
SEE ABOVE

MATCHLINE STA. 88+00
SEE SHEET 7 OF 9

REVISIONS		ILLINOIS DEPARTMENT OF TRANSPORTATION
NAME	DATE	
		VILLAGE OF LOMBARD WESTMORE /MEYERS RESURFACING PROJECT PROPOSED PLAN SHEET 6 OF 9

SCALE: 1:20
DATE: 01/31/07

DRAWN BY: JMT
CHECKED BY: JMT

PLOT DATE = 1/27/2007
FILE NAME = H:\Lombard\41489 Westmore Meyers Resurfacing\CAD\ppan106.dgn