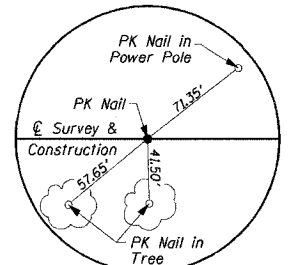


ROUTE NO.	SECTION	COUNTY	TOTAL SHEETS	SHEET NO.
FAS 1067	99-0019-00-BR	JO DAVIESS	9	3
ROAD DIST.		ILLINOIS		

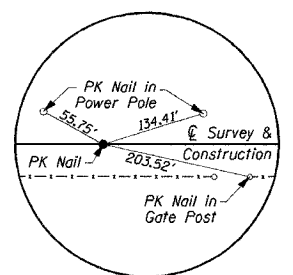
Karl E. and Lori L. Lawfer
East of Section 32, T. 27 N., R. 5 E. of the 4th P.M.

Schedule of Quantities

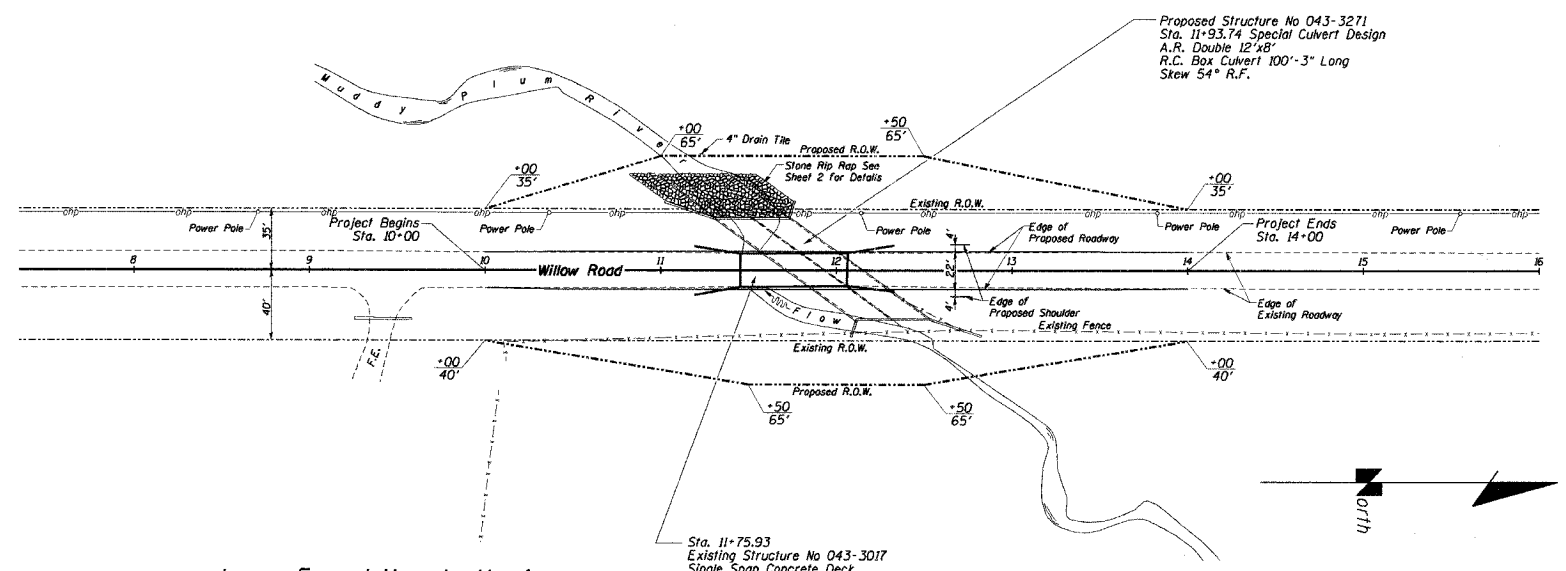
Item	Location	Quantity	Unit
Earth Excavation	Location: Sta. 10+00 - Sta. 14+00	850	Cu. Yd.
Channel Excavation	Location: Sta. 11+93.74 (Culvert)	150	Cu. Yd.
Furnished Excavation	Location: Sta. 10+00 - Sta. 14+00	500	Cu. Yd.
Porous Granular Embankment	Location: Sta. 11+93.74 (Culvert)	257	Cu. Yd.
Seeding Class 2 (Special)	Location: Sta. 10+00 - Sta. 14+00	0.84	Acres
Erosion Control Blanket	See 'Erosion Control Plan' - Sheet 4		
Earth Excavation for Erosion Control	See 'Erosion Control Plan' - Sheet 4		
Temporary Erosion Control Seeding	See 'Erosion Control Plan' - Sheet 4		
Temporary Ditch Checks	See 'Erosion Control Plan' - Sheet 4		
Fence (Erosion Control)	See 'Erosion Control Plan' - Sheet 4		
Stone Rip Rap, Class A5	Location: Sta. 11+93.74 L1. (Culvert Outlet)	190	Sq. Yd.
Filter Fabric	Location: Sta. 11+93.74 L1. (Culvert Outlet)	190	Sq. Yd.
Sub-Base Granular Material, Type B	Location: Sta. 10+00 - Sta. 14+00	580	Ton
Aggregate Base Course, Type A	Location: Sta. 10+00 - Sta. 14+00	550	Ton
Bituminous Materials (Prime Coat)	Location: Sta. 10+00 - Sta. 14+00	200	Gallon
Hot Mix Asphalt Surface Course, Mix C, MSO	Location: Sta. 10+00 - Sta. 14+00	165	Ton
Aggregate Shoulders, Type B	Location: Sta. 10+00 - Sta. 14+00	56	Ton
Removal of Existing Structures	Location: Sta. 11+93.74 (Culvert)	1	Each
Rock Excavation for Structures	Location: Sta. 11+93.74 (Culvert)	10	Cu. Yd.
Reinforcement Bars	Location: Sta. 11+93.74 (Culvert)	51740	Pound
Name Plates	Location: Sta. 11+93.74 (Culvert)	1	Each
Drilled Shaft in Soil	Location: Sta. 11+93.74 (Culvert)	2.5	Cu. Yd.
Drilled Shaft in Rock	Location: Sta. 11+93.74 (Culvert)	6.5	Cu. Yd.
Concrete Box Culverts	Location: Sta. 11+93.74 (Culvert)	270	Cu. Yd.
Barbed Wire Fence, Five Strand	Location: Sta. 10+00 - Sta. 14+00 Rt.	405	Foot
Traffic Control and Protection, Standard BLR 2)	Location: Sta. 10+00 - Sta. 14+00	1	Each
Paint Pavement Marking - Line 4'	Location: Sta. 10+00 - Sta. 14+00 Lt. & Rt.	800	Foot
Yellow Skip Dash (10' in 40')	Location: Sta. 10+00 - Sta. 14+00 E	100	Foot



P.O.T. Sta. 4+56.84 (Ties)



P.O.T. Sta. 16+00.00 (Ties)



Lucas E. and Mary L. Harriss
West of Section 33, T. 27 N., R. 5 E. of the 4th P.M.

Sta. 11+75.93
Existing Structure No 043-3017
Single Span Concrete Deck on Steel Beams with Steel Railing on Closed Concrete Abutments
59' Face to Face of Abutments
19'-5" Face to Face Railings
Skew = 0°

B.M. # 2 - Spike Nail in Power Pole
34.00' Left, Sta. 6+98.99, Elev. = 103.06'

B.M. # 1 - Chiseled "X" in NE Wingwall
11.95' Right, Sta. 12+32.64, Elev. = 100.00'

B.M. # 3 - Spike Nail in Power Pole
34.85' Left, Sta. 15+55.31, Elev. = 98.42'

Earthwork Quantities

- Channel Excavation - The channel shall be excavated as shown in the details on sheet 2 and taper back to the existing channel at the R.O.W.
- Channel Excavation - 150 Cu. Yds.
- Earth Excavation - 850 Cu. Yds.
- Embankment (for information only) - 1500 Cu. Yds.
- Structure Excavation (for information only) - 500 Cu. Yds.
- Furnished Excavation = 500 Cu. Yds.
- Notes: Embankment quantity has been adjusted for the volume of the box culvert
- Shrinkage factor of 25% applied for Furnished Excavation calculation

