

STATE OF ILLINOIS

DEPARTMENT OF TRANSPORTATION

DIVISION OF HIGHWAYS

PLANS FOR PROPOSED BRIDGE REHABILITATION PROJECT F.A.U. ROUTE 5148 (PERRYVILLE ROAD) COUNTY HIGHWAY 11 OVER NORTH BRANCH KISHWAUKEE RIVER

SECTION 06-00387-00-BR WINNEBAGO COUNTY PROJECT BHM-5099 (67) JOB NUMBER - C-92-082-06

Table with columns: ROUTE NO., SECTION, COUNTY, SHEETS, SHEET NO. Values: 5148, WINNEBAGO, 15, 1

85405

INDEX OF SHEETS

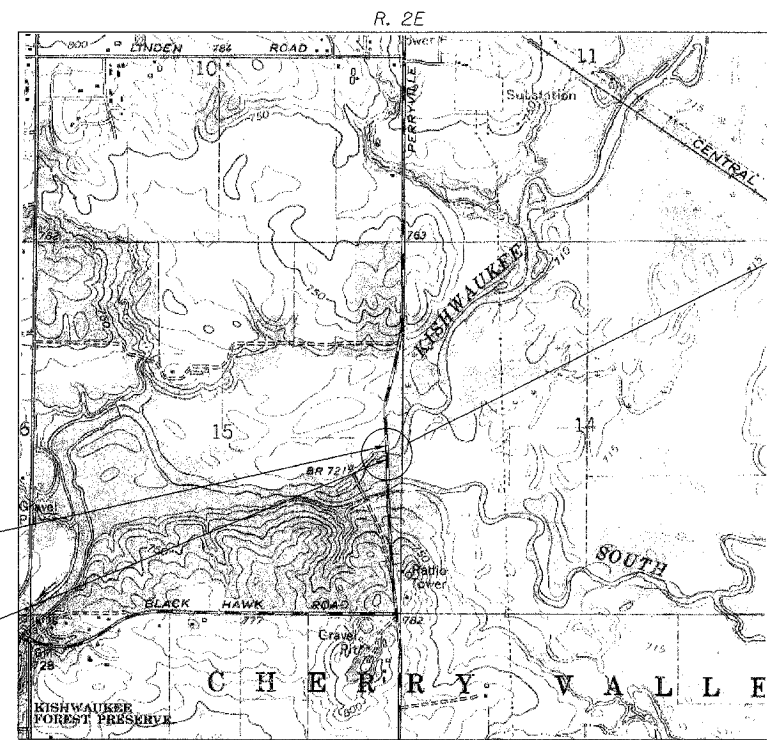
- 1. TITLE SHEET
2. GENERAL NOTES & SUMMARY OF QUANTITIES
3. DETOUR PLAN
4. GENERAL PLAN AND ELEVATION
5. TOP OF SLAB ELEVATIONS
6. SUPERSTRUCTURE
7. PREFORMED JOINT STRIP SEAL
8. STEEL BRIDGE RAIL, TYPE SM
9. BEAM ELEVATION
10.-11. BEARING DETAILS
12. ABUTMENTS
13. SCOUR COUNTERMEASURES - PLAN
14. PIER 1 - DETAILS
15. PIER 2 - DETAILS

LIST OF STANDARDS

- 515001-02 NAME PLATE FOR BRIDGES
630001-06 STEEL PLATE BEAM GUARDRAIL
631031-06 TRAFFIC BARRIER TERMINAL, TYPE 6
631032-02 TRAFFIC BARRIER TERMINAL, TYPE 6A
702001-06 TRAFFIC CONTROL DEVICES
720001 SIGN PANEL MOUNTING DETAILS
720006-01 SIGN PANEL ERECTION DETAILS
720011 METAL POSTS FOR SIGNS, MARKERS AND DELINEATORS
728001 TELESCOPING STEEL SIGN SUPPORT
729001 APPLICATIONS OF TYPES A & B METAL POSTS (FOR SIGNS AND MARKERS)
BLR 21-6 TYPICAL APPLICATION OF TRAFFIC CONTROL DEVICES



LOCATION OF SECTION INDICATED THUS: - [Symbol]



IMPROVEMENT BEGINS STATION 39+25
IMPROVEMENT ENDS STATION 43+25

LOCATION PLAN



SCALE OF LAYOUT NET LENGTH = 400 FEET (0.076 MI)

TRAFFIC DATA

HIGHWAY CLASSIFICATION: MINOR ARTERIAL (URBAN)
2004 ADT: 4,850 1X TRUCKS
DESIGN SPEED: 55 MPH
POSTED SPEED: 55 MPH

TOLL FREE

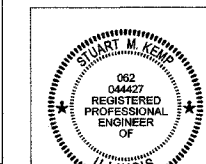
JOINT UTILITY LOCATING INFORMATION FOR EXCAVATORS (J.U.L.I.E.) TELEPHONE NUMBER 1-800-892-0123

UTILITY NOTE

THE LOCATIONS OF THOSE BURIED AND ABOVEGROUND UTILITIES SHOWN ARE APPROXIMATE, ARE SHOWN FOR CONTRACTOR INFORMATIONAL USE ONLY, AND ARE NOT TO BE REFERENCED FOR CONSTRUCTION PURPOSES. THE IMPLIED PRESENCE OR ABSENCE OF UTILITIES IS NOT TO BE CONSTRUED BY THE OWNER, ENGINEER, CONTRACTOR, OR SUBCONTRACTORS TO BE AN ACCURATE AND COMPLETE REPRESENTATION OF UTILITIES THAT MAY OR MAY NOT EXIST ON THE CONSTRUCTION SITE.

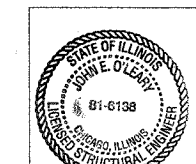
PROPOSED IMPROVEMENTS

CONCRETE BRIDGE DECK REPLACEMENT, REPLACEMENT OF EXPANSION JOINTS, REPLACEMENT OF ABUTMENT BACK WALLS, REPLACEMENT OF ABUTMENT BEARINGS, CONCRETE SLOPE WALL REPAIRS AND SCOUR REMEDIATION, EXISTING AND NEW STRUCTURE NUMBER 101-3063.



Signature of Stuart M. Kemp, dated 1/31/07, LIC. EXP. DATE 11/30/2007

Sheets 1 to 3



Signature of Julie O'Leary, dated 2/8/07, LIC. EXP. DATE 2/8/08

Sheets 13 to 15

Approval stamps: APPROVED JANUARY 31, 2007 COUNTY ENGINEER; PASSED FEBRUARY 8, 2007 DISTRICT ENGINEER OF LOCAL ROADS & STREETS; FEBRUARY 8, 2007 DEPUTY DIRECTOR OF HIGHWAYS/REGION 2 ENGINEER; STATE OF ILLINOIS DEPARTMENT OF TRANSPORTATION

Corporate License Number 184-001-084 Copyright Hanson Professional Services Inc. 2005



JOB NO. 06R1568 DATE 2/1/07

4:53:54 PM 01/29/2007 04:53 PM I:\05\1068\06R1568\CADD\Struct\SheetS\001-Title.dwg

Table with columns: LAYOUT, DRAWN, CHECKED, DATE. Values: 11/10/06, 11/27/06, 11/27/06, SKM

CONTRACT NO. - 85405