

STATE OF ILLINOIS

DEPARTMENT OF TRANSPORTATION

DIVISION OF HIGHWAYS

**PLANS FOR PROPOSED
BRIDGE REHABILITATION PROJECT
F.A.U. ROUTE 5148 (PERRYVILLE ROAD)
COUNTY HIGHWAY 11
OVER NORTH BRANCH KISHWAUKEE RIVER**

**SECTION 06-00387-00-BR
WINNEBAGO COUNTY
PROJECT BHM-5099 (67)
JOB NUMBER - C-92-082-06**

ROUTE NO.	SECTION	COUNTY	SHEET NO.	TOTAL SHEETS
F.A.U. 5148		WINNEBAGO	15	1
FED. ROAD DIST. NO. 7		ILLINOIS	FED. AID PROJECT BHM-5099(67)	
* 06-00387-00-BR				

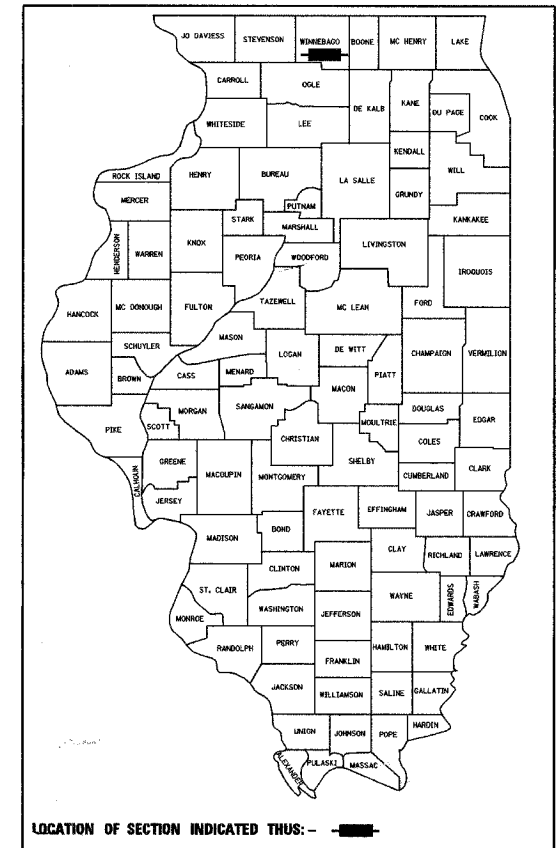
85405

INDEX OF SHEETS

1. TITLE SHEET
2. GENERAL NOTES & SUMMARY OF QUANTITIES
3. DETOUR PLAN
4. GENERAL PLAN AND ELEVATION
5. TOP OF SLAB ELEVATIONS
6. SUPERSTRUCTURE
7. PREFORMED JOINT STRIP SEAL
8. STEEL BRIDGE RAIL, TYPE SM
9. BEAM ELEVATION
- 10.-11. BEARING DETAILS
12. ABUTMENTS
13. SCOUR COUNTERMEASURES - PLAN
14. PIER 1 - DETAILS
15. PIER 2 - DETAILS

LIST OF STANDARDS

- 515001-02 NAME PLATE FOR BRIDGES
- 630001-06 STEEL PLATE BEAM GUARDRAIL
- 631031-06 TRAFFIC BARRIER TERMINAL, TYPE 6
- Revised 631032-02 TRAFFIC BARRIER TERMINAL, TYPE 6A
4-4-07
- 702001-06 TRAFFIC CONTROL DEVICES
- 720001 SIGN PANEL MOUNTING DETAILS
- 720006-01 SIGN PANEL ERECTION DETAILS
- 720011 METAL POSTS FOR SIGNS, MARKERS
AND DELINEATORS
- 728001 TELESCOPING STEEL SIGN SUPPORT
- 729001 APPLICATIONS OF TYPES A & B METAL
POSTS (FOR SIGNS AND MARKERS)
- BLR 21-6 TYPICAL APPLICATION OF TRAFFIC
CONTROL DEVICES



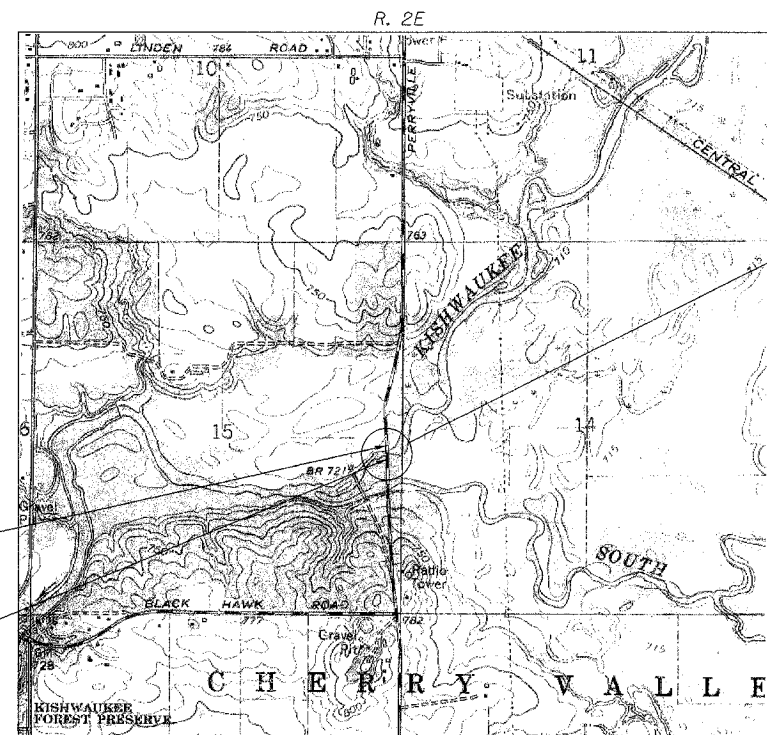
LOCATION OF SECTION INDICATED THUS: - [black rectangle] -

TOLL FREE

JOINT UTILITY LOCATING INFORMATION FOR EXCAVATORS
(J.U.L.I.E.) TELEPHONE NUMBER
1-800-892-0123

UTILITY NOTE

THE LOCATIONS OF THOSE BURIED AND ABOVEGROUND UTILITIES SHOWN ARE APPROXIMATE, ARE SHOWN FOR CONTRACTOR INFORMATIONAL USE ONLY, AND ARE NOT TO BE REFERENCED FOR CONSTRUCTION PURPOSES. THE IMPLIED PRESENCE OR ABSENCE OF UTILITIES IS NOT TO BE CONSTRUED BY THE OWNER, ENGINEER, CONTRACTOR, OR SUBCONTRACTORS TO BE AN ACCURATE AND COMPLETE REPRESENTATION OF UTILITIES THAT MAY OR MAY NOT EXIST ON THE CONSTRUCTION SITE. BURIED AND ABOVEGROUND UTILITY LOCATION, IDENTIFICATION, AND MARKING ARE THE SOLE RESPONSIBILITY OF THE CONTRACTOR. REROUTING, DISCONNECTION, PROTECTION, ETC. OF ANY UTILITIES MUST BE COORDINATED AMONG THE CONTRACTOR, UTILITY COMPANY, AND OWNER. SITE SAFETY, INCLUDING THE AVOIDANCE OF HAZARDS, ASSOCIATED WITH BURIED AND ABOVEGROUND UTILITIES REMAIN THE SOLE RESPONSIBILITY OF THE CONTRACTOR.



IMPROVEMENT BEGINS
STATION 39+25

IMPROVEMENT ENDS
STATION 43+25

LOCATION PLAN



SCALE OF LAYOUT

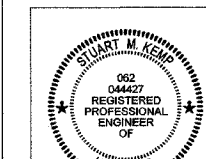
NET LENGTH = 400 FEET (0.076 MI)

TRAFFIC DATA

HIGHWAY CLASSIFICATION: MINOR ARTERIAL (URBAN)
2004 ADT: 4,850 1% TRUCKS
DESIGN SPEED: 55 MPH
POSTED SPEED: 55 MPH

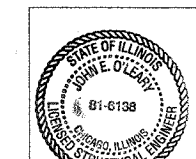
PROPOSED IMPROVEMENTS

CONCRETE BRIDGE DECK REPLACEMENT,
REPLACEMENT OF EXPANSION JOINTS,
REPLACEMENT OF ABUTMENT BACK WALLS,
REPLACEMENT OF ABUTMENT BEARINGS,
CONCRETE SLOPE WALL REPAIRS AND
SCOUR REMEDIATION, EXISTING AND NEW
STRUCTURE NUMBER 101-3063.



Signature of Stuart M. Kemp
DATE: 1/31/07
LIC. EXP. DATE: 11/30/2007

Sheets 1 to 3



Signature of John E. O'Leary
DATE: 2/08/07
LIC. EXP. DATE: 2/08/08

Sheets 13 to 15

APPROVED: January 31, 2007
[Signature]
COUNTY ENGINEER

PASSED: February 8, 2007
[Signature]
DISTRICT ENGINEER OF LOCAL ROADS & STREETS

RELEASING FOR BID BASED ON LIMITED REVIEW: February 8, 2007
[Signature]
DEPUTY DIRECTOR OF HIGHWAYS/REGION 2 ENGINEER

STATE OF ILLINOIS
DEPARTMENT OF TRANSPORTATION

Corporate License Number 184-001-084
© Copyright Hanson Professional Services Inc. 2005



45354 PM 11/10/06 01/29/07 04:53 PM 1/26/08 06:15:58 CAD/Struct/Sheri S-001-7/1/06

CONTRACT NO. - 85405

GENERAL NOTES

- CONTRACTORS BIDDING THIS PROJECT SHALL VISIT THE SITE BEFORE BIDDING.
- THE CONTRACTOR SHALL FIELD VERIFY ALL DIMENSIONS AND EXISTING CONDITIONS PRIOR TO CONSTRUCTION AND NOTIFY THE ENGINEER OF ANY DISCREPANCY IMMEDIATELY.
- THE CONTRACTOR SHALL BE RESPONSIBLE FOR REPAIRS TO ANY UTILITY LINES AND EXISTING IMPROVEMENTS TO REMAIN THAT ARE DAMAGED AS A RESULT OF THE WORK.
- ALL SECTIONS, DETAILS, AND NOTES SHOWN ON THE DRAWINGS ARE INTENDED TO BE TYPICAL AND SHALL APPLY TO SIMILAR SITUATIONS ELSEWHERE, UNLESS OTHERWISE SHOWN.
- DELETED 4-4-07**
- ALL ELEVATIONS, STATIONS, AND OFFSETS SHOWN ON THE PLANS SHALL BE FIELD VERIFIED BY THE CONTRACTOR PRIOR TO CONSTRUCTION.
- ALL PAVEMENT TO BE REMOVED SHALL BE SAW CUT FULL DEPTH AT THE LIMITS OF REMOVAL. PAYMENT FOR THE SAW CUT SHALL BE INCLUDED IN THE COST OF THE ITEM BEING REMOVED.
- ALL WARNING SIGNS FOR TRAFFIC CONTROL AND PROTECTION SHALL BE 48-IN. SIZE AND FLOURESCENT ORANGE.

UTILITY CONTACTS

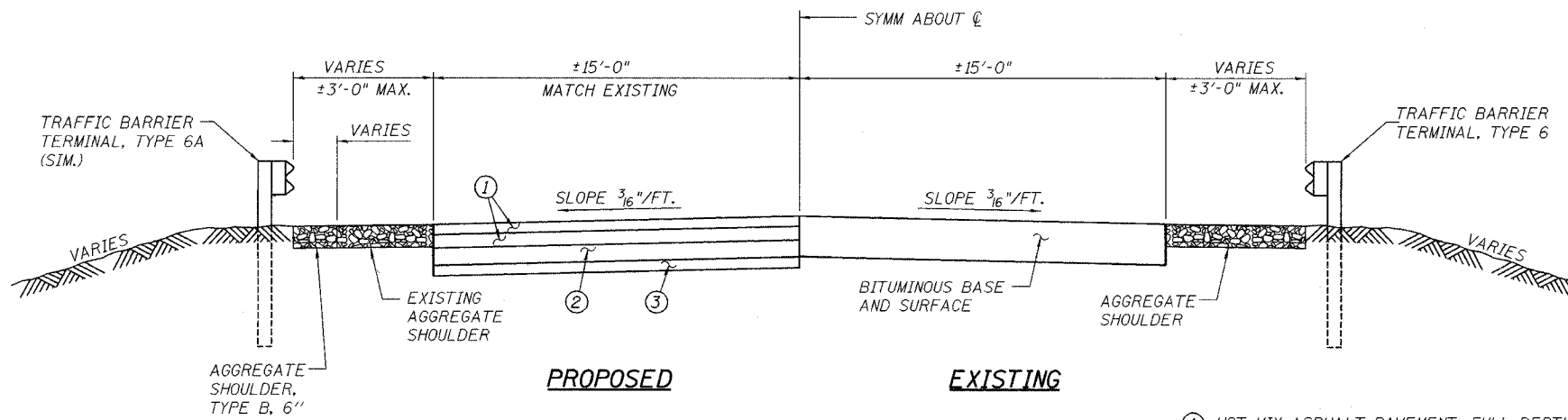
UTILITY NAME	TYPE	CONTACT	PHONE NUMBER
COMMONWEALTH EDISON CO. 123 ENERGY AVENUE ROCKFORD, ILLINOIS 61109	ELECTRICAL	DAVE SCHACHT	(815) 490-3261
INSIGHT COMMUNICATIONS 4450 KISHWAUKEE STREET ROCKFORD, ILLINOIS 61109	TV	MIKE OWENS	(815) 395-8977 (815) 395-7876 (CELL)
AT&T LONG DISTANCE NETWORK SERVICES 866 ROCK CREEK ROAD PLANO, ILLINOIS 60545	COMMUNICATIONS	CARL DONAHUE	(847) 420-9115
SBC 2404 8TH AVENUE ROCKFORD, ILLINOIS 61108	COMMUNICATIONS	FRANK ROSE	(815) 394-7276
NICOR GAS 4651 LINDEN ROAD ROCKFORD, ILLINOIS 61109	GAS	STAN JANUSZ	(815) 965-5416 EXT. 211

SUMMARY OF QUANTITIES
CONSTRUCTION TYPE CODE: X071-2A

CODE PAY ITEM NO.	ITEM	UNIT	TOTAL QUANTITY
* 20300300	CHANNEL EXCAVATION (SPECIAL)	CU. YD.	705
* 20700400	POROUS GRANULAR EMBANKMENT, SPECIAL	CU. YD.	42
28100807	STONE DUMPED RIPRAP, CLASS A4	TON	583
* 28200200	FILTER FABRIC	SQ. YD.	153
* XX000000	CHANNEL SURVEY	L. SUM	1
* 50104800	REMOVAL OF EXISTING CONCRETE DECK	L. SUM	1
50300255	CONCRETE SUPERSTRUCTURE	CU. YD.	1816
50300260	BRIDGE DECK GROOVING	SQ. YD.	690
50300300	PROTECTIVE COAT	SQ. YD.	735
50500405	FURNISHING AND ERECTING STURCTURAL STEEL	L. SUM	1
50500505	STUD SHEAR CONNECTORS	EACH	2850
* 50500715	JACK AND REMOVE EXISTING BEARINGS	EACH	10
50800205	REINFORCEMENT BARS, EPOXY COATED	POUND	50710
50901005	STEEL BRIDGE RAIL, TYPE SM	FOOT	418
51500100	NAME PLATES	EACH	1
* 51500200	RELOCATING NAME PLATES	EACH	1
52000110	PREFORMED JOINT STRIP SEAL	FOOT	64
52100010	ELASTOMERIC BEARING ASSEMBLY, TYPE I	EACH	5
52100020	ELASTOMERIC BEARING ASSEMBLY, TYPE II	EACH	5
52100520	ANCHOR BOLTS, 1"	EACH	20
* 63300115	REMOVAL AND REINSTALLATION OF EXISTING STEEL PLATE BEAM GUARDRAIL, SINGLE RAIL	FOOT	100
* 63300315	REMOVAL AND REINSTALLATION OF EXISTING TERMINAL SECTION, SINGLE RAIL	EACH	4
* 67000500	ENGINEER'S FIELD OFFICE, TYPE B	CAL. MO.	4
67100100	MOBILIZATION	L. SUM	1
* 70103700	TRAFFIC CONTROL COMPLETE	L. SUM	1
Δ 78000200	THERMOPLASTIC PAVEMENT MARKING - LINE 4"	FOOT	80
Δ 78001110	PAINT PAVEMENT MARKING - LINE 4"	FOOT	836
* X0323491	SLOPE WALL CRACK SEALING	FOOT	120
* X0656300	PAVEMENT REMOVAL AND REPLACEMENT	SQ. YD.	71
* XX002053	LANDSCAPE RESTORATION	L. SUM	1
* 20013798	CONSTRUCTION LAYOUT	L. SUM	1
* 20018905	DRILL AND GROUT BARS	EACH	140

* SEE SPECIAL PROVISIONS, HIGHWAY STANDARDS, GENERAL NOTES, AND/OR DETAILS IN PLANS
Δ SPECIALTY ITEM

BITUMINOUS PAVEMENT DESIGN		
LOCATION(S):	PERRYVILLE ROAD, WINNEBAGO CO., IL	
MIXTURE USE(S):	8" BINDER COURSE	2" SURFACE COURSE
PG:	PG58-28	PG58-28
DESIGN AIR VOIDS:	4% @ N50	4% @ N50
MIXTURE COMPOSITION: (GRADATION MIXTURE)	IL 19.0	IL 9.5 OR IL 12.5
FRICTION AGGREGATE:	N/A	MIXTURE E
MIXTURE WEIGHT:	112 LB/SQ. YD./IN	112 LB/SQ. YD./IN



TYPICAL APPROACH ROADWAY SECTION

STA. 39+75.46 TO STA. 39+85.46
STA. 41+94.54 TO STA. 42+04.54

- HOT MIX ASPHALT PAVEMENT, FULL DEPTH, 10"
- SUB-BASE GRANULAR MATERIAL, TYPE A, 8"
- SUB-BASE GRANULAR MATERIAL, TYPE B, 4"

ROUTE NO.	SECTION	COUNTY	SHEET NO.	TOTAL SHEETS
F.A.U. 5148	*	WINNEBAGO	15	2
FED. ROAD DIST. NO. 7	ILLINOIS	FED. AID PROJECT	BHM-5099(67)	

8545
06-00387-00-BR

40346 PM 12/23/07
01/02/07
1062 [unclear] CADD Struct Steel S-002-NotesQuantities-V8.dgn

LAYOUT	SMK	12/23/07
DRAWN	MON	01/02/07
REVIEWED	SMK	

Corporate License Number 184-001-084

GENERAL NOTES & QUANTITIES

**PERRYVILLE ROAD BRIDGE
OVER NORTH BRANCH KISHWAUKEE RIVER
F.A.U. ROUTE 5148
SECTION 06-00387-00-BR
WINNEBAGO COUNTY
STRUCTURE NUMBER 101-3063
STATION 40+90**

© Copyright Hanson Professional Services Inc. 2007



06R1568

DATE
2/1/07