

STATE OF ILLINOIS

DEPARTMENT OF TRANSPORTATION

DIVISION OF HIGHWAYS

**PLANS FOR PROPOSED
BRIDGE REHABILITATION PROJECT
F.A.U. ROUTE 5148 (PERRYVILLE ROAD)
COUNTY HIGHWAY 11
OVER NORTH BRANCH KISHWAUKEE RIVER**

**SECTION 06-00387-00-BR
WINNEBAGO COUNTY
PROJECT BHM-5099 (67)
JOB NUMBER - C-92-082-06**

PROJECT NO.	DISTRICT	COUNTY	SHEET NO.	TOTAL SHEETS
F.A.U. 5148		WINNEBAGO	15	1

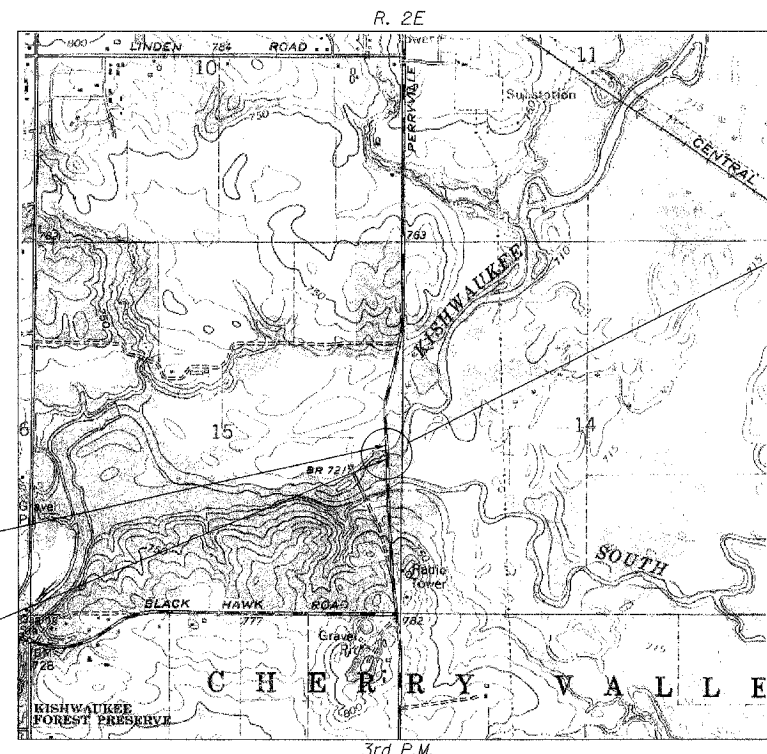
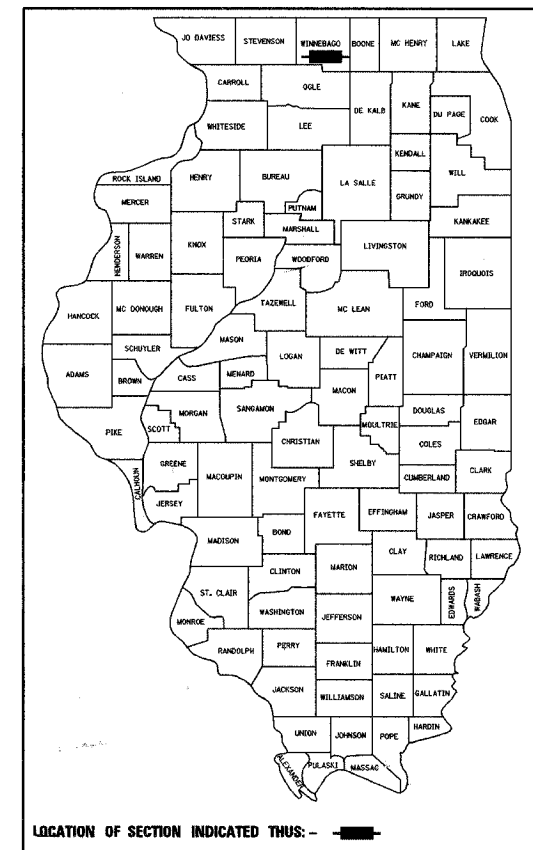
06-00387-00-BR
85405

INDEX OF SHEETS

1. TITLE SHEET
2. GENERAL NOTES & SUMMARY OF QUANTITIES
3. DETOUR PLAN
4. GENERAL PLAN AND ELEVATION
5. TOP OF SLAB ELEVATIONS
6. SUPERSTRUCTURE
7. PREFORMED JOINT STRIP SEAL
8. STEEL BRIDGE RAIL, TYPE SM
9. BEAM ELEVATION
- 10.-11. BEARING DETAILS
12. ABUTMENTS
13. SCOUR COUNTERMEASURES - PLAN
14. PIER 1 - DETAILS
15. PIER 2 - DETAILS

LIST OF STANDARDS

- 515001-02 NAME PLATE FOR BRIDGES
630001-06 STEEL PLATE BEAM GUARDRAIL
631031-06 TRAFFIC BARRIER TERMINAL, TYPE 6
631032-03 TRAFFIC BARRIER TERMINAL, TYPE 6A
702001-06 TRAFFIC CONTROL DEVICES
720001 SIGN PANEL MOUNTING DETAILS
720006-01 SIGN PANEL ERECTION DETAILS
720011 METAL POSTS FOR SIGNS, MARKERS AND DELINEATORS
728001 TELESCOPING STEEL SIGN SUPPORT
729001 APPLICATIONS OF TYPES A & B METAL POSTS (FOR SIGNS AND MARKERS)
BLR 21-6 TYPICAL APPLICATION OF TRAFFIC CONTROL DEVICES



IMPROVEMENT BEGINS
STATION 39+25

IMPROVEMENT ENDS
STATION 43+25

PROPOSED IMPROVEMENTS

CONCRETE BRIDGE DECK REPLACEMENT,
REPLACEMENT OF EXPANSION JOINTS,
REPLACEMENT OF ABUTMENT BACK WALLS,
REPLACEMENT OF ABUTMENT BEARINGS,
CONCRETE SLOPE WALL REPAIRS AND
SCOUR REMEDIATION. EXISTING AND NEW
STRUCTURE NUMBER 101-3063.

TOLL FREE

JOINT UTILITY LOCATING INFORMATION FOR EXCAVATORS
(J.U.L.I.E.) TELEPHONE NUMBER
1-800-892-0123

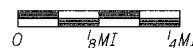
UTILITY NOTE

THE LOCATIONS OF THOSE BURIED AND ABOVEGROUND UTILITIES SHOWN ARE APPROXIMATE, ARE SHOWN FOR CONTRACTOR INFORMATIONAL USE ONLY, AND ARE NOT TO BE REFERENCED FOR CONSTRUCTION PURPOSES. THE IMPLIED PRESENCE OR ABSENCE OF UTILITIES IS NOT TO BE CONSTRUED BY THE OWNER, ENGINEER, CONTRACTOR, OR SUBCONTRACTORS TO BE AN ACCURATE AND COMPLETE REPRESENTATION OF UTILITIES THAT MAY OR MAY NOT EXIST ON THE CONSTRUCTION SITE. BURIED AND ABOVEGROUND UTILITY LOCATION, IDENTIFICATION, AND MARKING ARE THE SOLE RESPONSIBILITY OF THE CONTRACTOR. REROUTING, DISCONNECTION, PROTECTION, ETC. OF ANY UTILITIES MUST BE COORDINATED AMONG THE CONTRACTOR, UTILITY COMPANY, AND OWNER. SITE SAFETY, INCLUDING THE AVOIDANCE OF HAZARDS, ASSOCIATED WITH BURIED AND ABOVEGROUND UTILITIES REMAIN THE SOLE RESPONSIBILITY OF THE CONTRACTOR.

TRAFFIC DATA

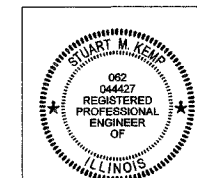
HIGHWAY CLASSIFICATION: MINOR ARTERIAL (URBAN)
2004 ADT: 4,850 1% TRUCKS
DESIGN SPEED: 55 MPH
POSTED SPEED: 55 MPH

LOCATION PLAN



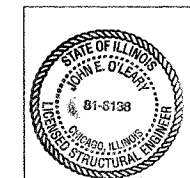
SCALE OF LAYOUT

NET LENGTH = 400 FEET (0.076 MI)



Stuart M. Kemp
SIGNATURE
1/31/07
DATE
LIC. EXP. DATE: 11/30/2007

Sheets 1 to 3



Joseph E. Crowe
SIGNATURE
3/20/07
DATE
LIC. EXP. DATE: 3/20/2008

Sheets 13 to 15

APPROVED January 31, 2007
[Signature]
COUNTY ENGINEER

PASSED February 8, 2007
[Signature]
DISTRICT ENGINEER OF LOCAL ROADS & STREETS

February 8, 2007
[Signature]
DEPUTY DIRECTOR OF HIGHWAYS/REGION 2 ENGINEER

STATE OF ILLINOIS
DEPARTMENT OF TRANSPORTATION

Corporate License Number 184-001-084

© Copyright Hanson Professional Services Inc. 2005



JOB NO.

06R1568

DATE

2/1/07

4:53:54 PM 01/29/2007 04:53 PM I:\06\Jobs\06R1568\CADD\Stradd\Sheet S-001-Title.dgn

LAYOUT 11/10/06
DRAWN 11/27/06
REVIEWED SKM

CONTRACT NO. - 85405