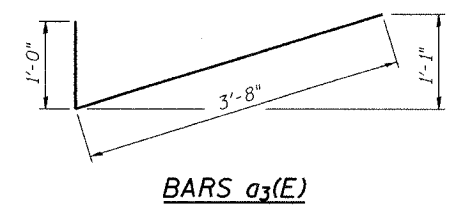
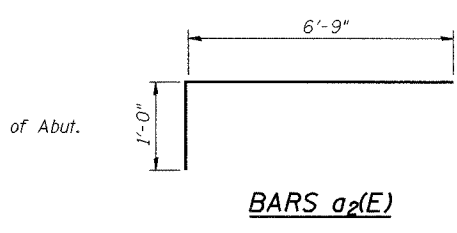
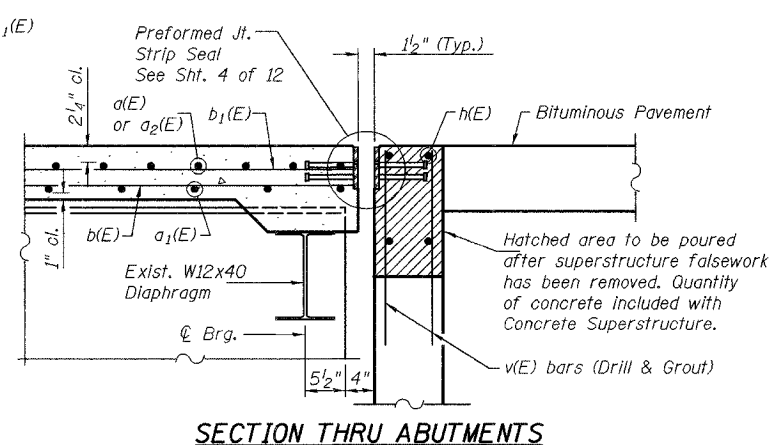


* Reinforcement bars in the top deck may be placed with a 1/2 inch minimum clearance in the area of the rail post anchor devices. The studs of the anchor devices shall be placed below the top reinforcement bars and the outermost longitudinal reinforcement bar shall be placed directly above the studs of the rail post anchor device.



SUPERSTRUCTURE BILL OF MATERIAL

Bar	No.	Size	Length	Shape	
a(E)	382	#5	21'-9"	—	
a ₁ (E)	249	#5	31'-8"	—	
a ₂ (E)	764	#7	7'-9"	—	
a ₃ (E)	384	#5	4'-8"	✓	
b(E)	240	#5	27'-4"	—	
b ₁ (E)	259	#5	31'-0"	—	
b ₂ (E)	64	#6	42'-8"	—	
Reinforcement Bars, Epoxy Coated				Pound	50,180
Concrete Superstructure				Cu. Yds.	178.8

Reinforcement bars designated (E) shall be epoxy coated.
Bars indicated thus 1 x 3-#5 etc. indicates 1 line of bars with 3 lengths per line.

Corporate License Number 184-001-084

SUPERSTRUCTURE
PERRYVILLE ROAD BRIDGE
OVER NORTH BRANCH KISHWAUKEE RIVER
F.A.U. ROUTE 5148
SECTION 06-00387-00-BR
WINNEBAGO COUNTY
STRUCTURE NUMBER 101-3063
STATION 40+90

3:48:47 PM 11/30/06
 ON 3/1/2007 03:48 PM
 I:\06\106\06R1568\CADD\Struct\Sheet S-006-superstructure.dgn
 LAYOUT
 DRAWN
 REVIEWED