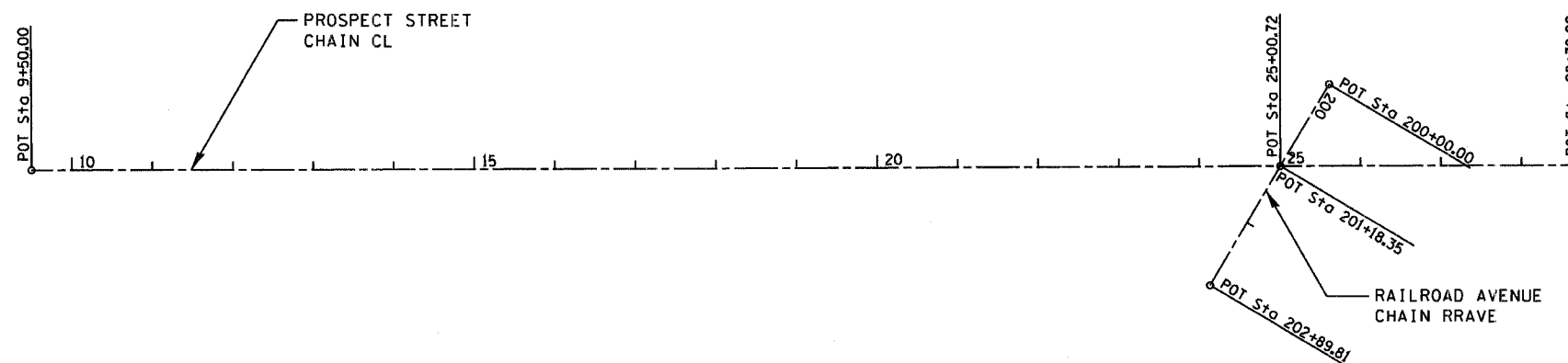
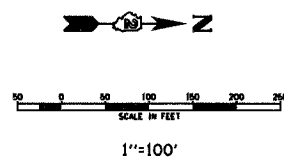


F.A. RTE.	SECTION	COUNTY	TOTAL SHEETS	SHEET NO.
MS 6600	05-00012-00-FP	HENRY	75	15
STA.	TO STA.			
FED. ROAD DIST. NO.	ILLINOIS	FED. AID PROJECT		

HORIZONTAL & VERTICAL CONTROL



Chain CL contains:
101 102 103

Beginning chain CL description

Point 101	N	4,118.65 E	5,003.35 Sta	9+50.00
Course from 101 to 102 N 0° 16' 42.63" W Dist 1,550.72				
Point 102	N	5,669.35 E	4,995.82 Sta	25+00.72
Course from 102 to 103 N 0° 13' 05.48" W Dist 371.37				
Point 103	N	6,040.72 E	4,994.40 Sta	28+72.09

Ending chain CL description

Chain RRAVE contains:
201 202 203

Beginning chain RRAVE description

Point 201	N	5,729.70 E	4,894.01 Sta	200+00.00
Course from 201 to 202 S 59° 20' 31.74" E Dist 118.35				
Point 202	N	5,669.35 E	4,995.82 Sta	201+18.35
Course from 202 to 203 S 59° 20' 31.74" E Dist 171.46				
Point 203	N	5,581.92 E	5,143.31 Sta	202+89.81

Ending chain RRAVE description

BENCH MARKS

CHAIN	NORTH	EAST	ELEVATION	STATION	OFFSET	DESCRIPTION
CL	5,024.69	4,969.25	100.00	18+56.2	29.7' LT	BM A CHISLED SQUARE IN THE NW CORNER OF THE INTERSECTION PROSPECT STREET AND EXCHANGE STREET
CL	4,302.31	4,974.33	105.62	11+51.80	28.0' LT	BM 1 PK NAIL SET ON W FACE OF LIGHT POLE, 2ND POLE N OF COURT STREET W SIDE OF PROSPECT STREET.
CL	5,401.46	4,964.70	96.60	22+33	32.4' LT	BM 3 N BOLT ON HYDRANT NW CORNER INTERSECTION OF PROSPECT STREET AND LOCUST STREET.
CL	5,731.51	4,965.07	91.36	25+63	30.5' LT	BM 4 N BOLT ON HYDRANT NW CORNER INTERSECTION OF PROSPECT STREET AND RAILROAD STREET.
CL	6,016.56	5,042.26	89.91	28+47.5	47.8' RT	BM 5 NW BOLT ON HYDRANT SE CORNER INTERSECTION OF PROSPECT STREET AND NORTH STREET.