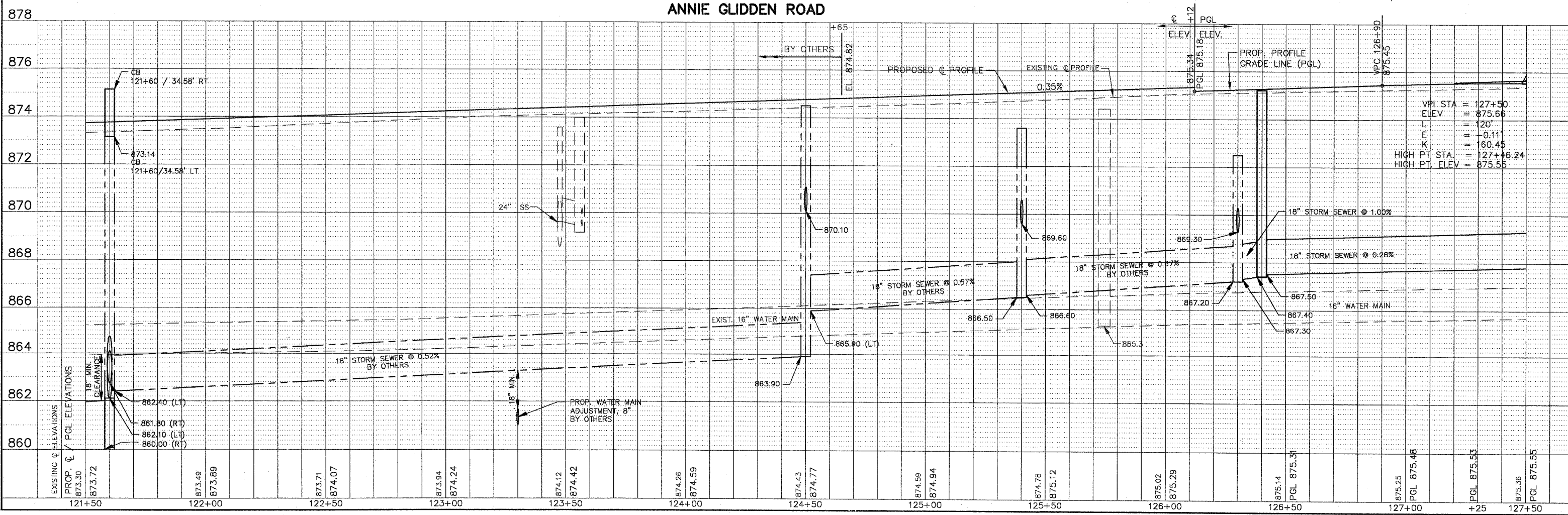


SCALE: 1" = 20'



878

876

874

872

870

868

866

864

862

860

VPI STA = 127+50
 ELEV = 875.66
 L = 120'
 E = -0.11'
 K = 160.45
 HIGH PT STA = 127+46.24
 HIGH PT ELEV = 875.55

EXISTING C ELEVATIONS	PROP. C / PGL ELEVATIONS	121+50	122+00	122+50	123+00	123+50	124+00	124+50	125+00	125+50	126+00	126+50	127+00	+25	127+50
		873.30	873.49	873.71	873.94	874.12	874.26	874.43	874.59	874.78	875.02	875.14	875.25	875.36	875.55
		873.72	873.89	874.07	874.24	874.42	874.59	874.77	874.94	875.12	875.29	875.31	875.48	875.53	875.55