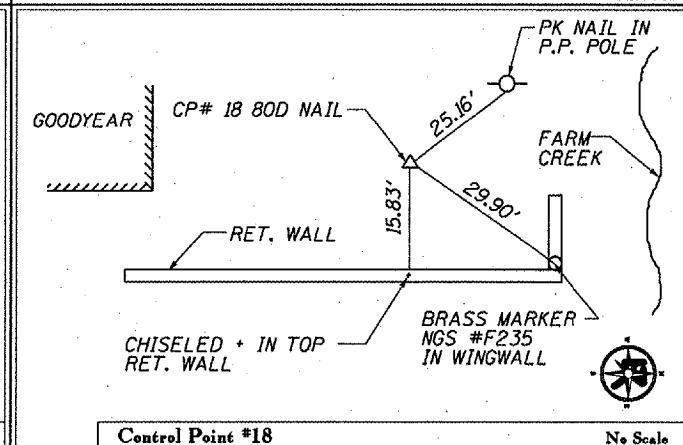
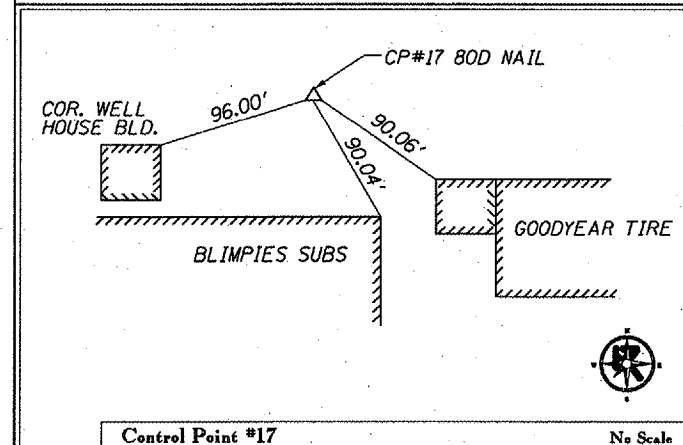
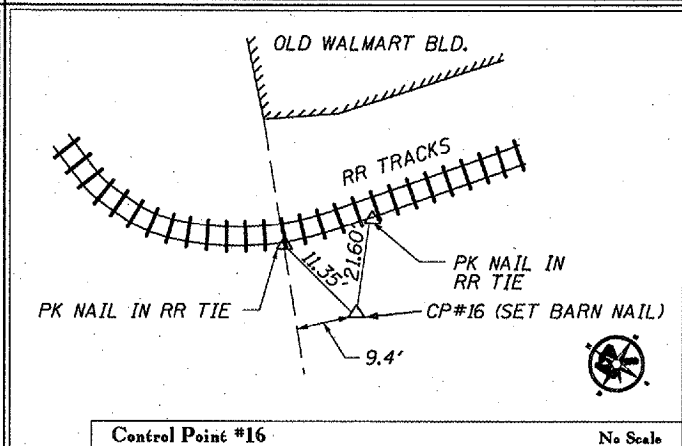
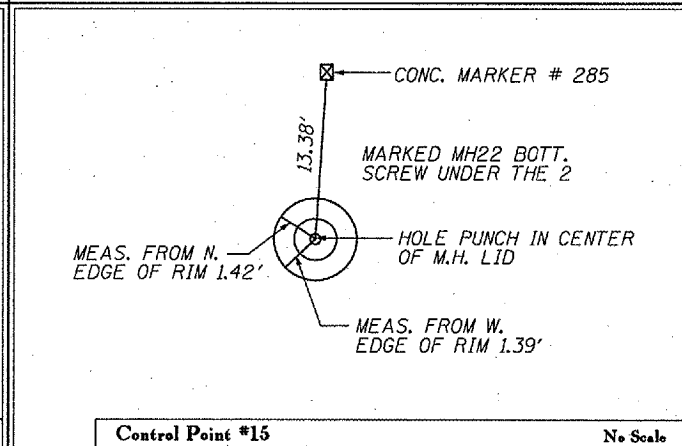
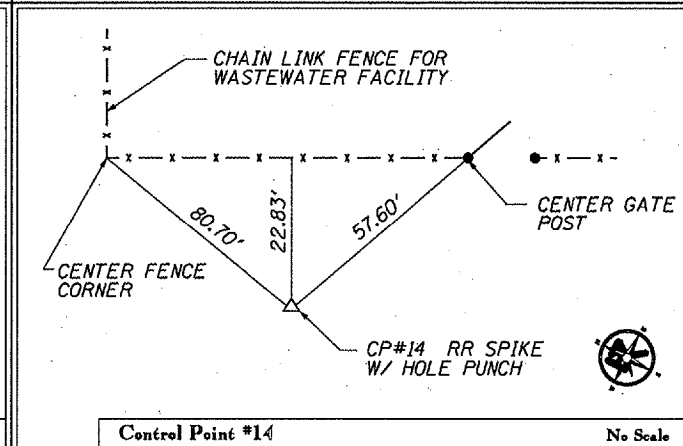
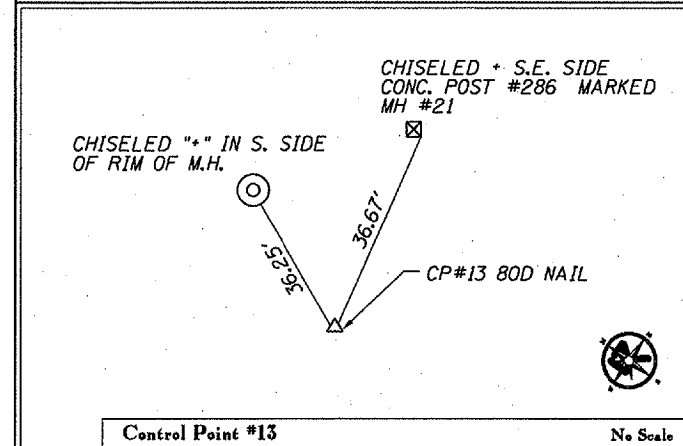
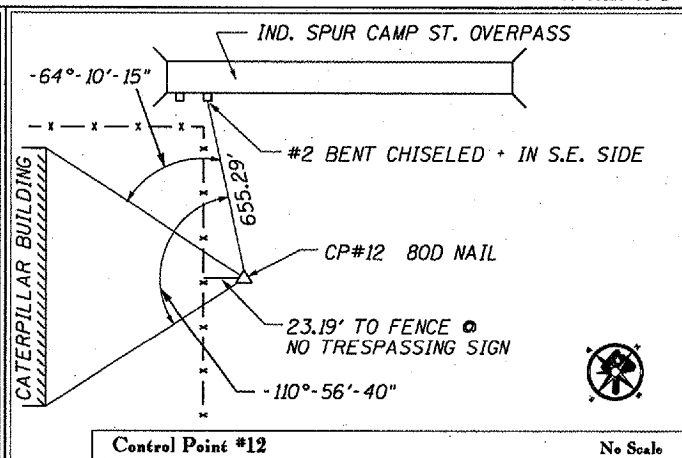
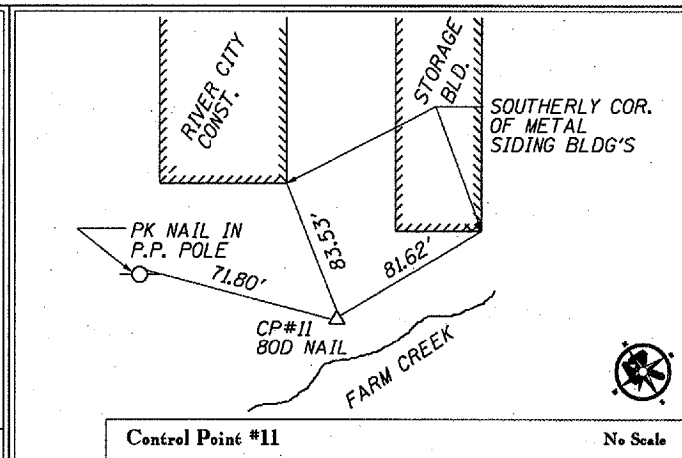
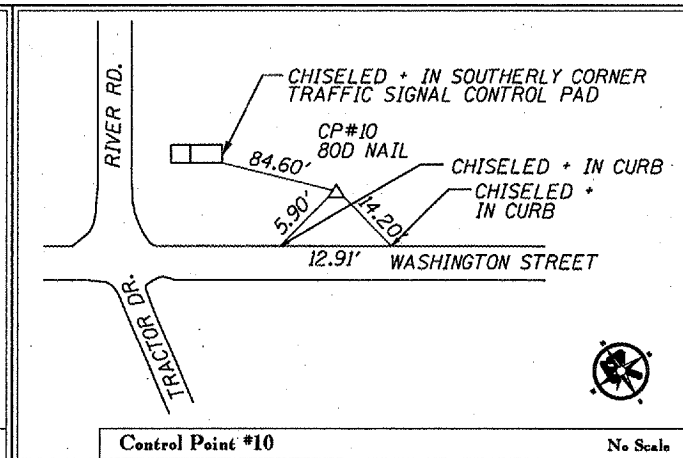
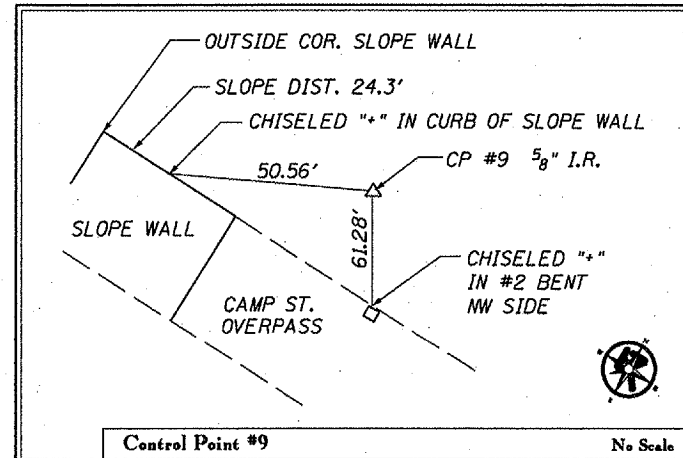
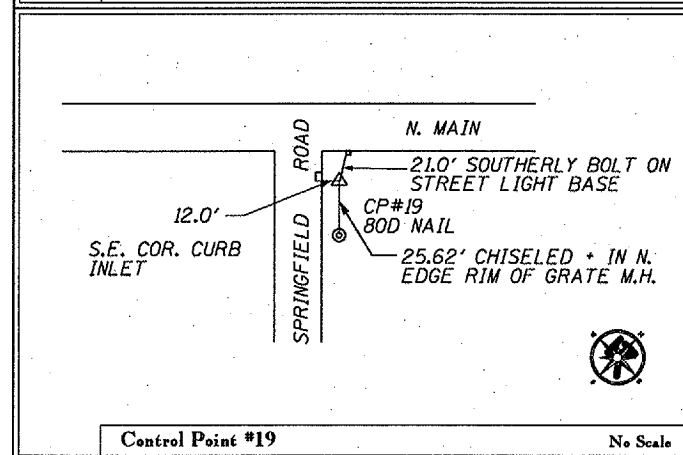


STATE OF ILLINOIS
DEPARTMENT OF TRANSPORTATION

ROUTE NO.	SECTION	COUNTY	SHEET	TOTAL
03-00123-03-BT		Tazewell	43	11
FED. ROAD DIST. NO. 7	ILLINOIS	FED. AID PROJECT	CONTRACT # 89302	



CONTROL POINT	DESCRIPTION	NORTHING	EASTING	ELEVATION
CP#9	5/8" I.R. NEAR CAMP ST. OVERPASS.	1461574.5223	2457245.2820	462.33
CP#10	80D NAIL NEAR NORTHEAST CORNER OF THE INTERSECTION OF WASHINGTON ST. AND RIVER RD.	1462408.0488	2456588.7467	465.21
CP#11	80D NAIL NEAR RIVER CITY CONSTRUCTION BUILDING AND TOP OF BANK TO FARM CREEK.	1462029.9038	2456937.3880	456.36
CP#12	80D NAIL ON FARM CREEK LEVEE ADJACENT TO CATERPILLAR BUILDING.	1460877.2608	2457717.2777	461.93
CP#13	80D NAIL	1460133.0357	2458173.5290	461.12
CP#14	RR SPIKE WITH HOLE PUNCH NEAR CHAIN LINK FENCE FOR WASTEWATER FACILITY.	1459462.35	2458596.33	462.42
CP#15	HOLE PUNCH IN CENTER OF MANHOLE 22 LID.	1458487.1694	2459215.5846	465.95
CP#16	SET BARN NAIL NEAR RAILROAD TRACKS ON OPPOSITE SIDE OF THE OLD WALMART BUILDING.	1458032.9892	2459131.8702	460.89
CP#17	80D NAIL NEAR BLIMPIES AND GOODYEAR.	1457925.8876	2459650.8597	464.35
CP#18	80D NAIL NEAR RETAINING WALL AND GOODYEAR.	1457764.9102	2459802.5897	466.95
CP#19	80D NAIL ON THE SOUTHEAST CORNER OF MAIN ST. AND SPRINGFIELD RD.	1457494.1458	2459685.4071	460.55



BENCHMARK	DESCRIPTION	ELEVATION
BM D-235	BRASS DISC USGS #D-235 TOP PIER FOOTING BETWEEN 4TH & 5TH PIER FROM WEST, E. END CAMP ST. OVERPASS.	459.85
BM E-235	BRASS DISC ON WINGWALL OF R.R. BRIDGE (464.11 STAMPED)	464.11

SURVEY TIE POINTS & BENCHMARKS
BIKE TRAIL OVER FARM CREEK
SECTION 03-00123-03-BT
TAEZEWELL COUNTY

DESIGNED	RMB	RANDOLPH & ASSOCIATES, INC. 111 N. PIONEER ROAD, DEERFIELD, IL 60015-1111 TEL: 847-470-0900 FAX: 847-470-0901 HTTP://WWW.RANDOLPHINC.COM	FILE NUMBER	56.46
CHECKED	CWB		DATE	August 2003
DRAWN	RMB			
CHECKED	CWB			