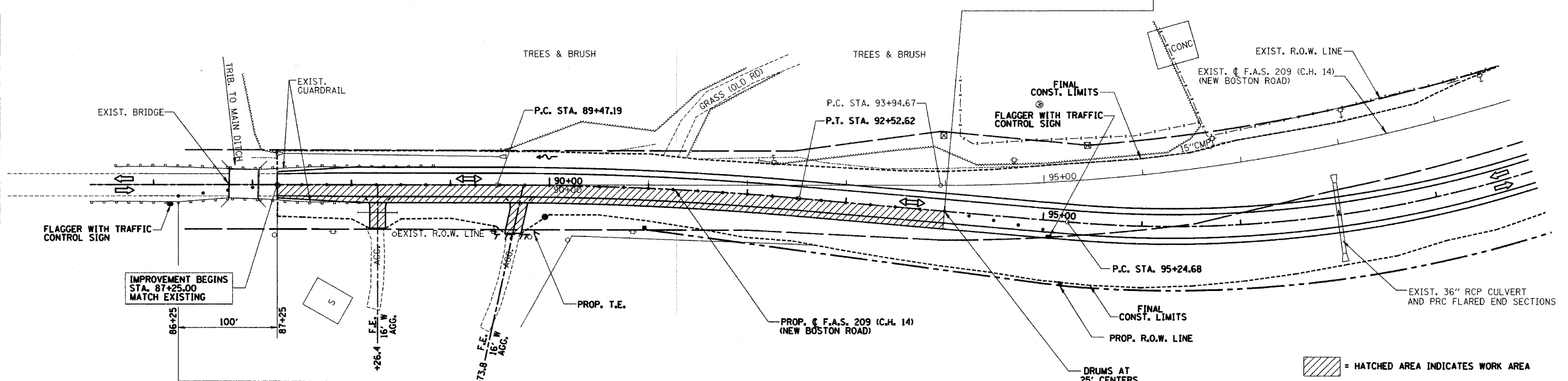
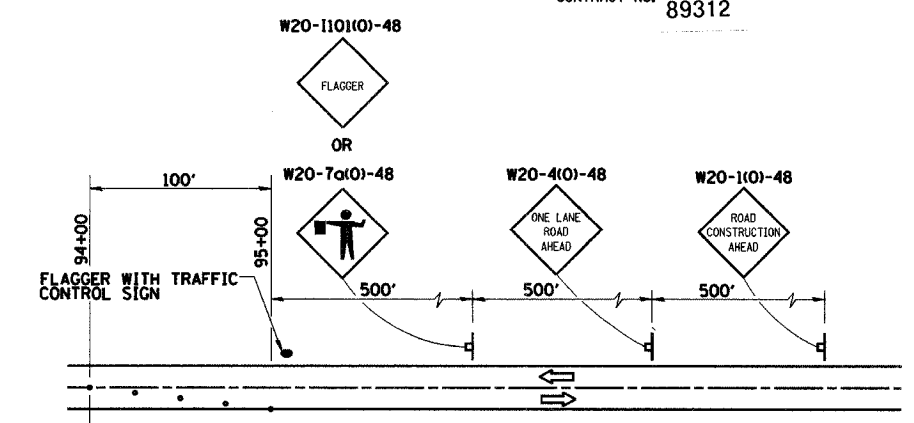
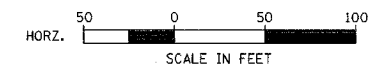


| | | | | |
|--------------------|----------------|----------------|--------------|-----------|
| RTE. | SECTION | COUNTY | TOTAL SHEETS | SHEET NO. |
| C.H. 14 | 00-00091-00-BR | MERCER | 111 | 42 |
| F.A.S. 209 | | | | |
| STA. 87+25 | | TO STA. 100+00 | | |
| CONTRACT NO. 89312 | | | | |



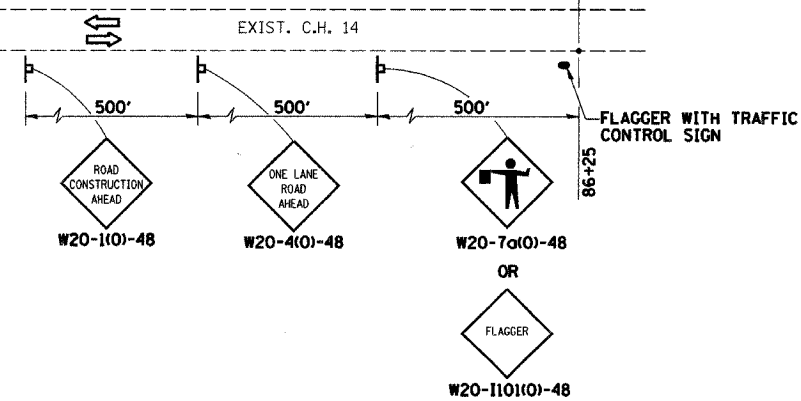
OVERALL STAGE 3B
SUGGESTED CONSTRUCTION SEQUENCE
 MAINTAIN 2-WAY TRAFFIC ON 1 LANE NEW PAVEMENT DURING DAYLIGHT WORKING HOURS USING TRAFFIC CONTROL STDS. 701001, 701006, 701011, 701201 & 701301)

STA. 87+25 TO 136+50

- 1 CONSTRUCT SURFACE COURSE STA 87+25 TO 94+00 AND STA 127+50 TO 136+50 SOUTHBOUND LANE
- 2 CONSTRUCT SHOULDER AND MAILBOX TURNOUTS RT STA 87+25 TO 94+00 AND RT STA 127+50 TO 136+50
- 3 APPLY FINAL STIPING STA 87+25 TO STA 94+00
- 4 APPLY FINAL STIPING STA 127+50 TO STA 136+50
- 5 CONSTRUCT F.E. RT STA 88+26.4 AND STA 89+73.8
- 6 CONSTRUCT F.E. RT STA 133+29.8
- 7 CONSTRUCT P.E. RT STA 135+12.5 AND STA 135+98.8

- = HATCHED AREA INDICATES WORK AREA
- = DIRECTION OF TRAFFIC
- = SIGN
- = DRUM

NOTE:
 AT END OF WORK DAY, MOVE DRUMS TO EDGE OF PAVEMENT TO ALLOW FOR 2-WAY TRAFFIC AT NIGHT ON NEW ROADWAY.



| TRAFFIC CONTROL - STAGE 3B | | |
|----------------------------|--|---|
| Date | Designed: SMK | F.A.S. 209 (C.H. 14) OVER KEATING CREEK NEW BOSTON ROAD SECTION 00-00091-00-BR MERCER COUNTY |
| Revisions | Drawn: SRS | |
| | Checked: SMK | |
| | Approved: SMK | |
| | | |
| Prepared by: URS | 345 East Ash Avenue Decatur, IL 62526 | URS Job No. 21-00001253.01 |