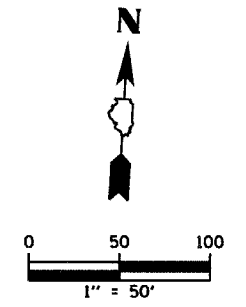
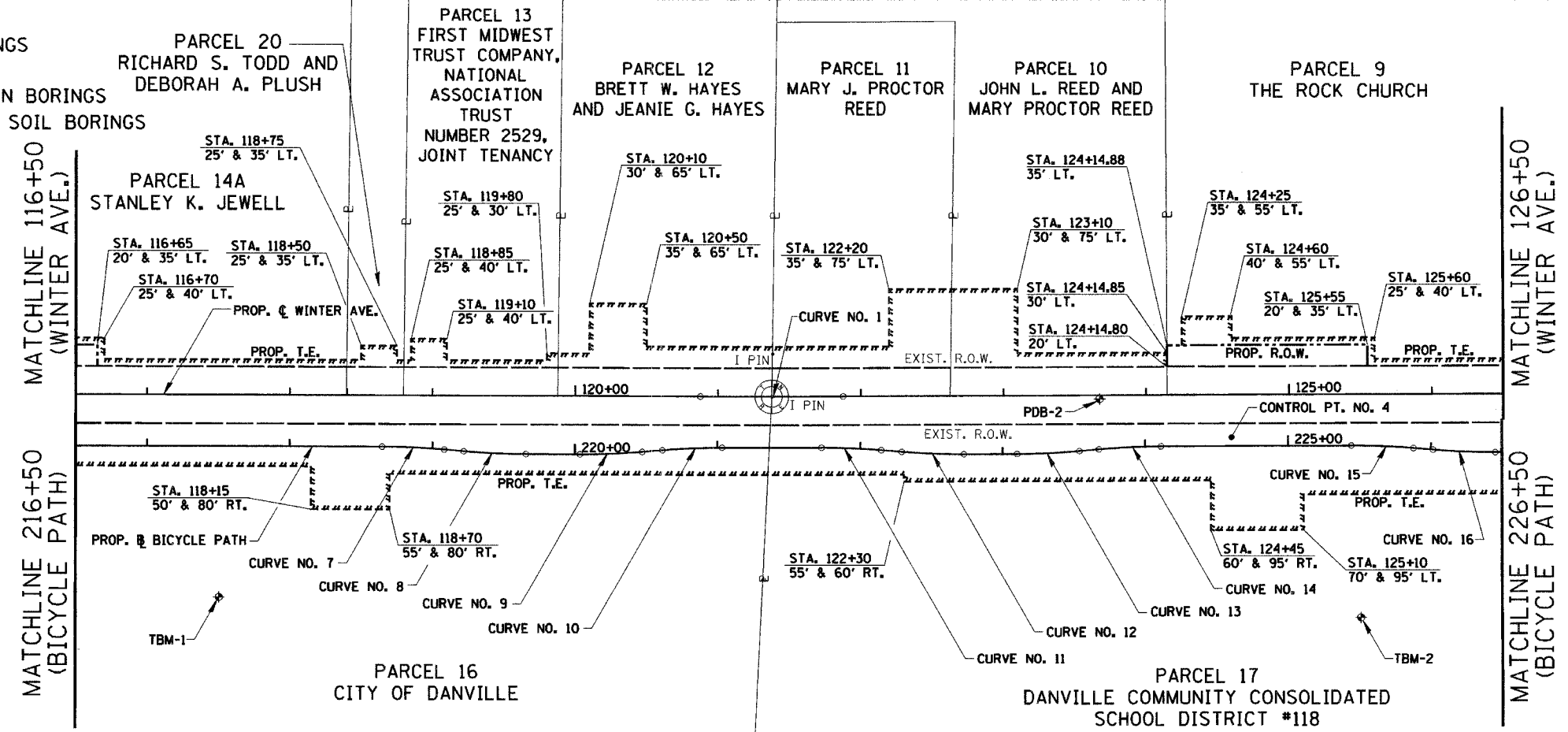


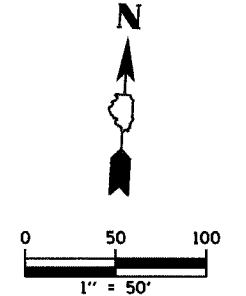
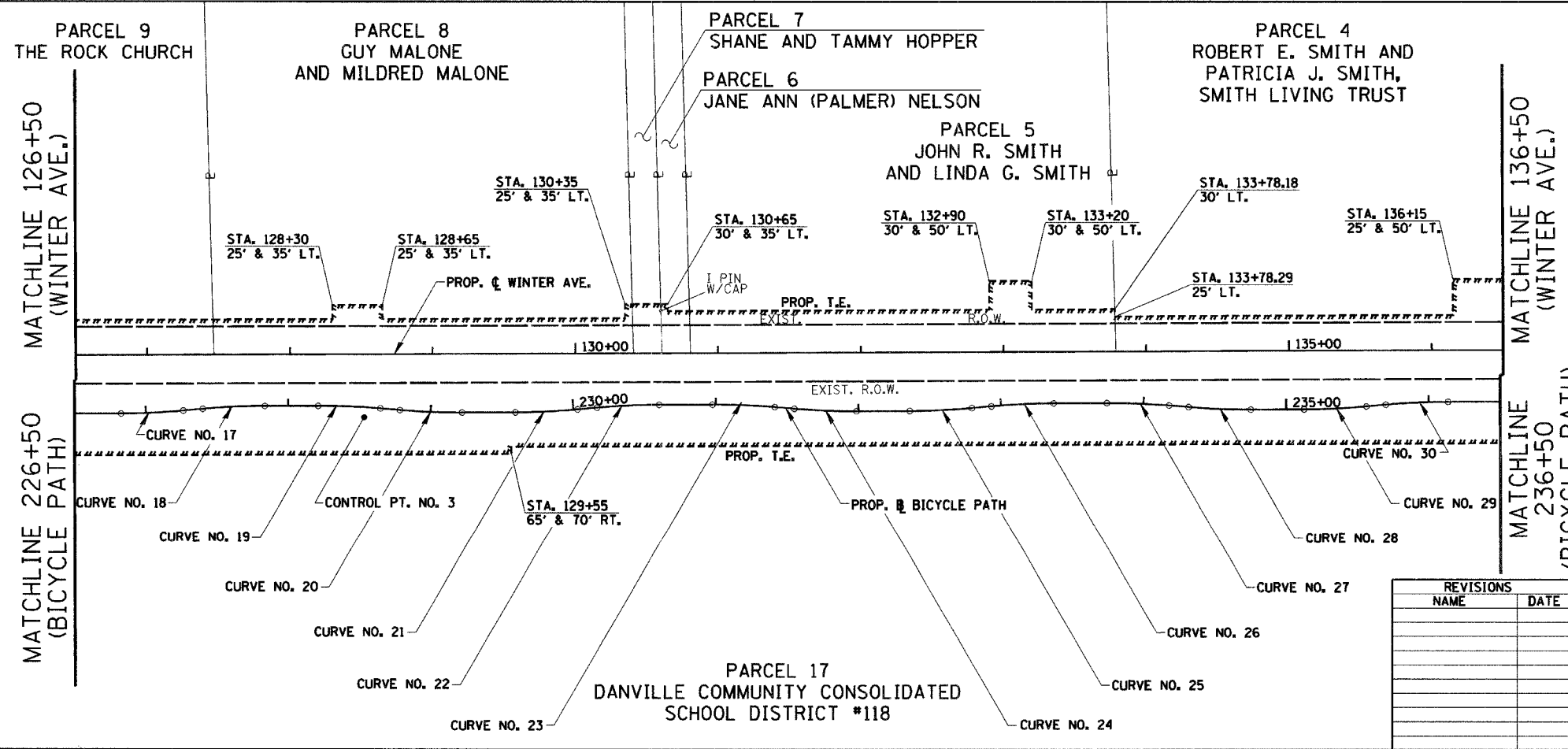
F.A.U. RTE.	SECTION	COUNTY	TOTAL SHEETS	SHEET NO.
6998	99-00209-01-PV	VERMILION	296	27
STA. 116+50		TO STA. 136+50		
FED. ROAD DIST. NO. ILLINOIS		FED. AID PROJECT-		
CONTRACT NO.: 91358				

**LEGEND**  
 BB-1 - BB-4 = BRIDGE SOIL BORINGS  
 SP-1 = SPECIAL BORINGS  
 PDB-1 - PDB-4 = PAVEMENT DESIGN BORINGS  
 TSB-1 - TSB-4 = TRAFFIC SIGNAL SOIL BORINGS  
 DCB-1 = DEEP CUT BORINGS

PLAN	SURVEYED	BY	DATE
	PLANNED		
	CHECKED		
	RT. OF WAY CHECKED		
	NO. 1		
	NO. 2		
	NO. 3		
	NO. 4		



PLAN	SURVEYED	BY	DATE
	PLANNED		
	CHECKED		
	RT. OF WAY CHECKED		
	NO. 1		
	NO. 2		
	NO. 3		
	NO. 4		



**NOTES:**  
 SEE ATB SHEET 5 OF 6 FOR ALIGNMENT TIES, CONTROL POINTS & BENCHMARKS.  
 SEE ATB SHEET 6 OF 6 FOR CURVE DATA.

ATB SHEET 2 OF 6

REVISIONS	NAME	DATE

CITY OF DANVILLE, ILLINOIS  
 WINTER AVENUE RECONSTRUCTION  
 ALIGNMENT, TIES, R.O.W.,  
 EASEMENTS & BENCHMARKS  
 WINTER AVENUE/BICYCLE PATH  
 STA. 116+50 TO STA. 136+50  
 SCALE: 1" = 50'  
 DRAWN BY: NIL  
 DATE: 12/21/06  
 CHECKED BY: SMK