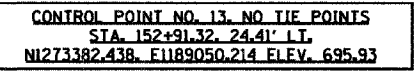
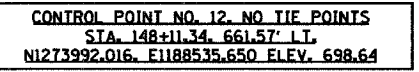
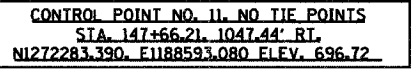
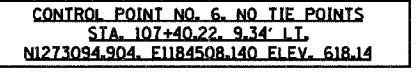
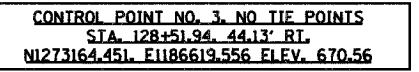
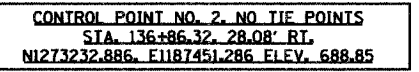
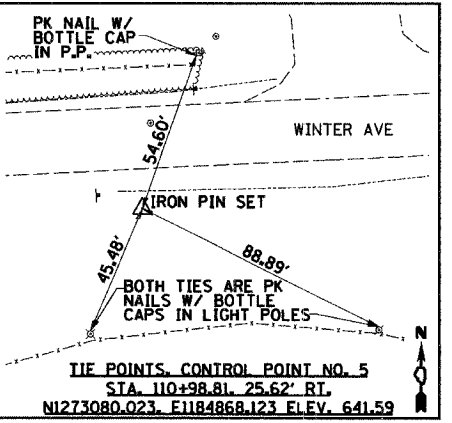
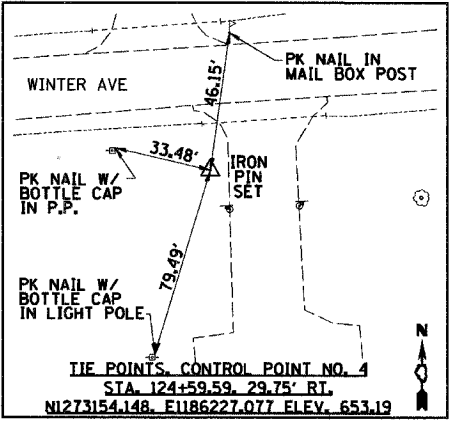
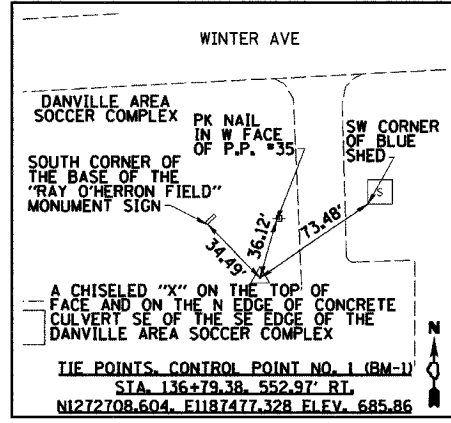
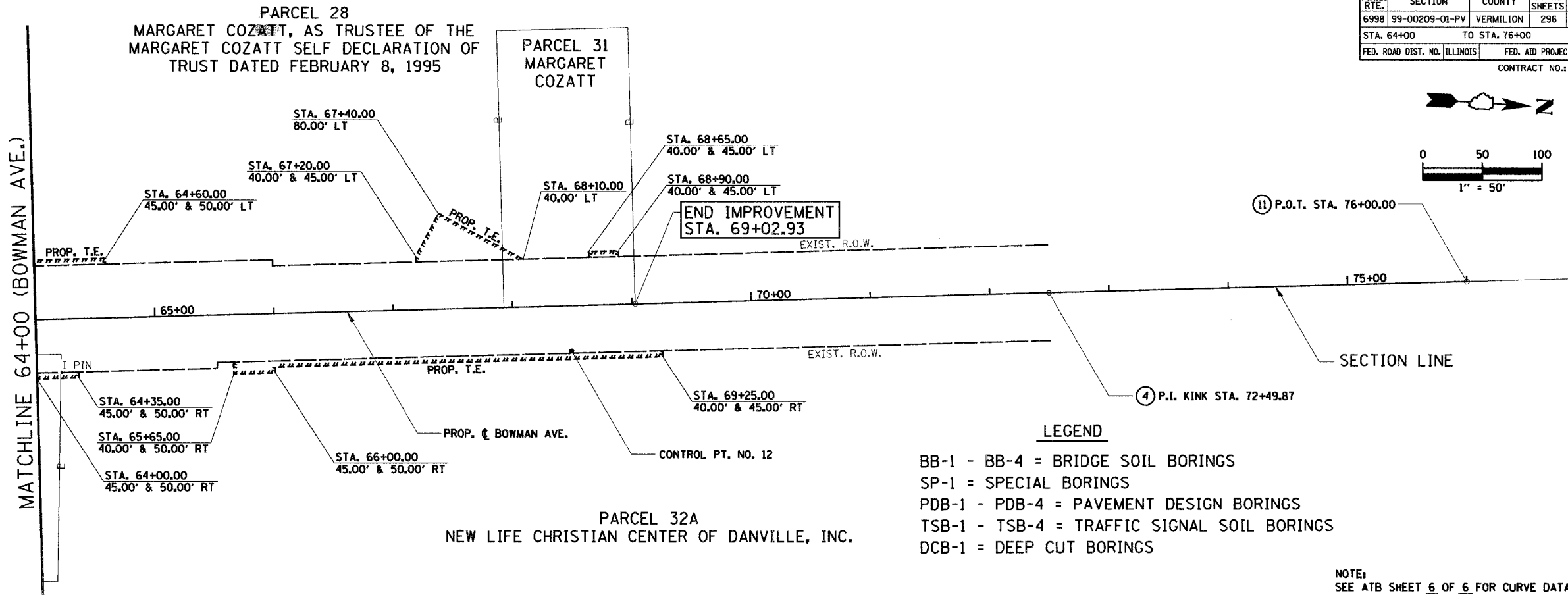


F.A.U. RTE.	SECTION	COUNTY	TOTAL SHEETS	SHEET NO.
6998	99-00209-01-PV	VERMILION	296	30
STA. 64+00		TO STA. 76+00		
FED. ROAD DIST. NO. ILLINOIS		FED. AID PROJECT-		
CONTRACT NO.: 91358				

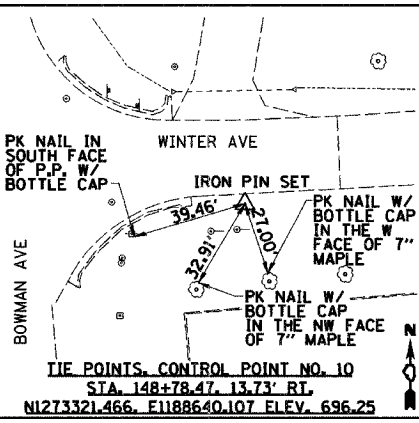
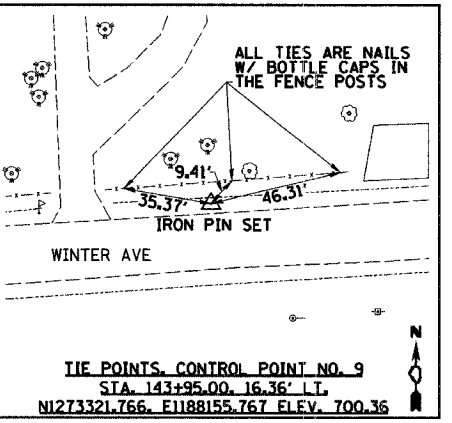
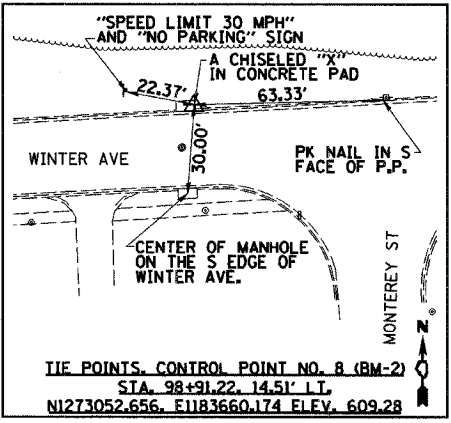
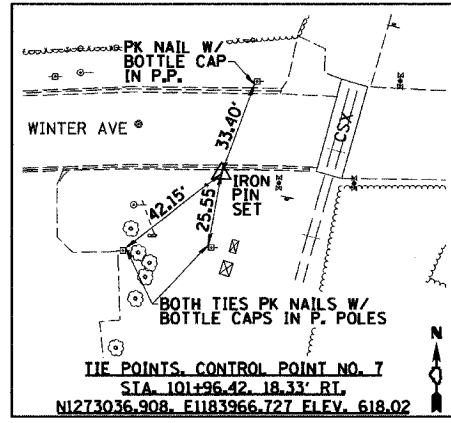
DATE	BY	SURVEYED	PLANNED	CHECKED	RT. OF WAY CHECKED	NO.
PLAN		NOTE BOOK				

DATE	BY	SURVEYED	PLANNED	CHECKED	RT. OF WAY CHECKED	NO.
PLAN		NOTE BOOK				



**TEMPORARY BENCHMARK DESCRIPTIONS:**  
 TBM-1: STA. 117+50, 141' RT. (WINTER AVE.) NE CORNER OF HANDHOLD EAST OF EAST AVENUE FOR PLAYGROUND NEAR LIGHT POLE NO. 40. ELEV. = 637.31  
 TBM-2: STA. 125+49.15, 156.80' RT. (WINTER AVE.) NE BOLT OF LIGHT POLE FOR SOCCER FIELD SOUTH OF FLAG POLE AT AUTOZONE FIELD. ELEV. = 666.07  
 TBM-3: STA. 60+98.27, 32.73' RT. (BOWMAN AVE.) HEADBOLT CLOSEST TO THE "M" IN MUELLER ON FIRE HYDRANT IN THE SE QUADRANT OF THE WINTER AVE. AT BOWMAN AVE. INTERSECTION. ELEV. = 698.68

POINT LOCATION	COORDINATES	
	NORTHING	EASTING
① P.O.T. STA. 94+96.37 (WINTER)	1,273,016.12	1,183,266.75
② P.I. KINK STA. 147+93.37 (WINTER) P.O.T. STA. 61+87.86 (BOWMAN)	1,273,330.47	1,188,554.38
③ P.O.T. STA. 157+93.36 (WINTER)	1,273,385.89	1,189,552.84
④ P.I. KINK STA. 72+49.87 (BOWMAN)	1,274,388.57	1,188,463.34
⑤ P.O.T. STA. 198+99.22 (BICYCLE PATH)	1,273,016.12	1,183,671.11
⑥ P.I. KINK STA. 201+74.13 (BICYCLE PATH)	1,273,031.47	1,183,945.58
⑦ P.I. KINK STA. 202+24.67 (BICYCLE PATH)	1,273,026.86	1,183,995.92
⑧ P.O.T. STA. 248+55.02 (BICYCLE PATH)	1,273,286.24	1,188,615.81
⑨ P.O.T. STA. 20+00.00 (PARK ENT.)	1,272,863.81	1,187,508.10
⑩ P.O.T. STA. 137+19.84 (WINTER) P.O.T. STA. 24+00.00 (PARK ENT.)	1,273,263.02	1,187,482.97
⑪ P.O.T. STA. 76+00.00 (BOWMAN)	1,274,737.41	1,188,433.31



REVISIONS	
NAME	DATE

CITY OF DANVILLE, ILLINOIS  
 WINTER AVENUE RECONSTRUCTION  
 ALIGNMENT, TIES, R.O.W.,  
 EASEMENTS & BENCHMARKS  
 BOWMAN AVENUE  
 STA. 64+00 TO STA. 76+00  
 SCALE: 1" = 50'  
 DATE: 12/21/06  
 DRAWN BY: NIL  
 CHECKED BY: SMK