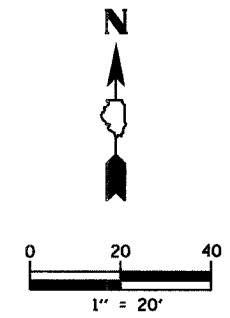


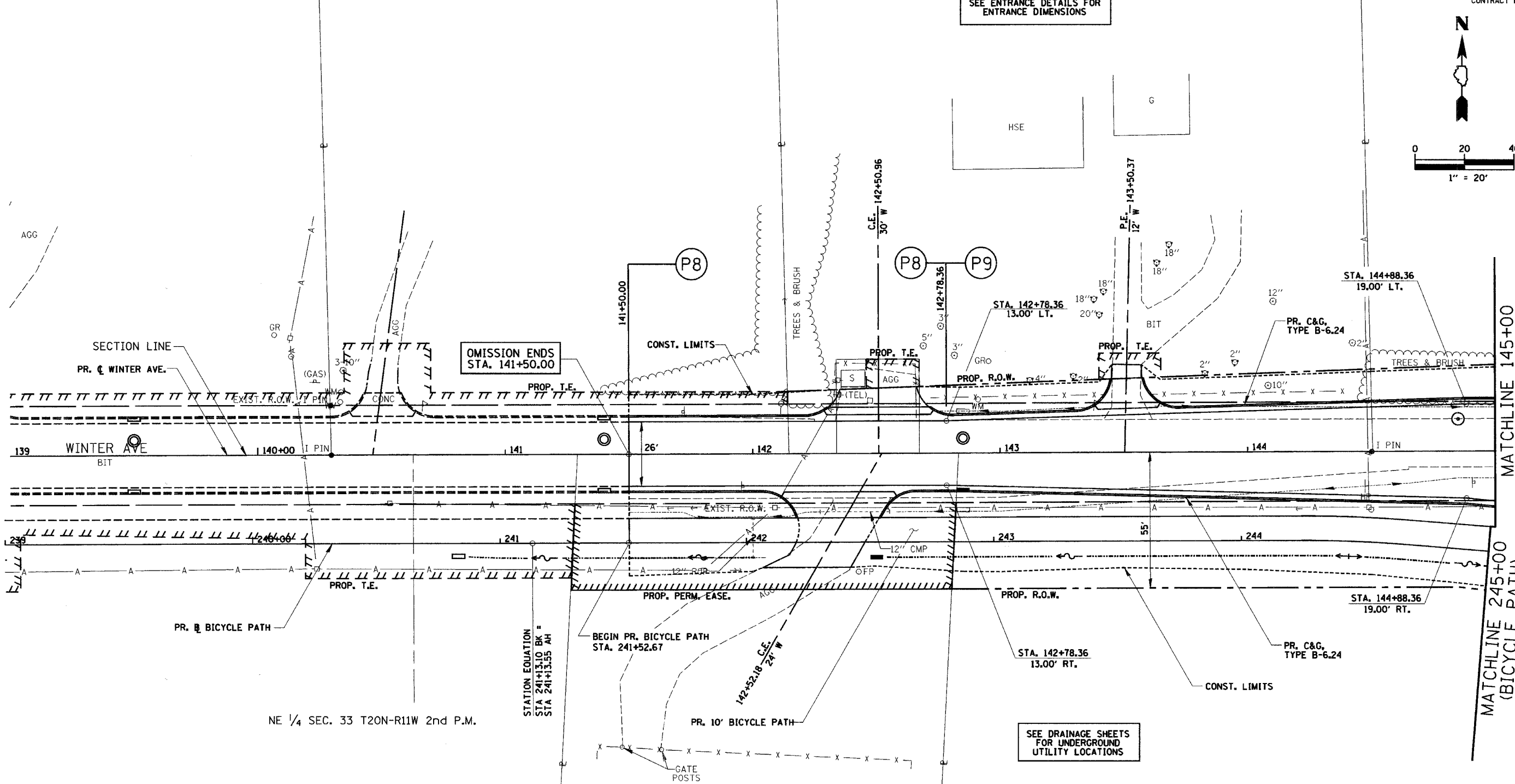
F.A.I. RTE.	SECTION	COUNTY	TOTAL SHEETS	SHEET NO.
6998	99-00209-01-PV	VERMILION	296	39
STA. 139+00		TO STA. 145+00		
FED. ROAD DIST. NO. ILLINOIS		FED. AID PROJECT-		
CONTRACT NO.: 91358				

SE 1/4 SEC. 28 T20N-R11W 2nd P.M.

SEE ENTRANCE DETAILS FOR ENTRANCE DIMENSIONS



PLAN	SURVEYED	DATE
	BY	
	NOTED	
	REVISIONS	
	NO. OF REVISIONS	
	DATE	
	BY	
	DATE	



NE 1/4 SEC. 33 T20N-R11W 2nd P.M.

SEE DRAINAGE SHEETS FOR UNDERGROUND UTILITY LOCATIONS

ENTRANCE QUANTITY SCHEDULE

TYPE	STATION	LT/RT	AGG BASE CSE B (CU YD) 35101500	AGG SURF CSE B (TONS) 40200800	BIT MATLS PR CT (GAL) 40800010	INCIDENTAL HMA SURF (TONS) 40800050	PCC DRIVEWAY PAVT 6 (SQ YD) 42300200	TEMP ACCESS-PRIV ENT (EACH) X4021000	TEMP ACCESS-COM ENT (EACH) X4022000
C.E.	142+50.96	LT	--	8.9	--	--	14.5	--	1
C.E.	142+52.18	RT	7.3	--	11.6	5.5	47.0	--	1
P.E.	143+50.37	LT	1.7	--	2.6	1.3	26.2	1	--
SHEET TOTALS			9.0	8.9	14.2	6.8	87.7	1	2

COMBINATION CONCRETE CURB & GUTTER, TYPE B-6.24

FROM STATION	TO STATION	LT/RT	COMB CC&G TB6.24 (FT) 60605000	PROT COAT (SY) 42001300
141+50.00	145+00.00	LT	350.1	116.7
141+50.00	145+00.00	RT	350.1	116.7
SHEET TOTAL			700.2	233.4

PORTLAND CEMENT CONCRETE SIDEWALK SCHEDULE

FROM STATION	TO STATION	PC CONC SIDEWALK 5 INCH (SF) 42400200
241+52.67	245+00.00	3477.4
SHEET TOTAL		3477.4

REVISIONS	
NAME	DATE

CITY OF DANVILLE, ILLINOIS
WINTER AVENUE RECONSTRUCTION
PROPOSED ROADWAY PLAN
WINTER AVENUE/BICYCLE PATH
STA. 139+00 TO STA. 145+00

SCALE: 1" = 20'
DRAWN BY: NIL
DATE: 12/21/06
CHECKED BY: MBF