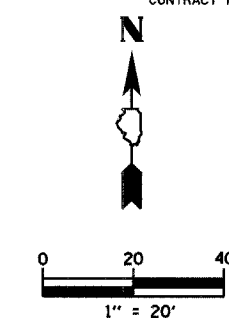


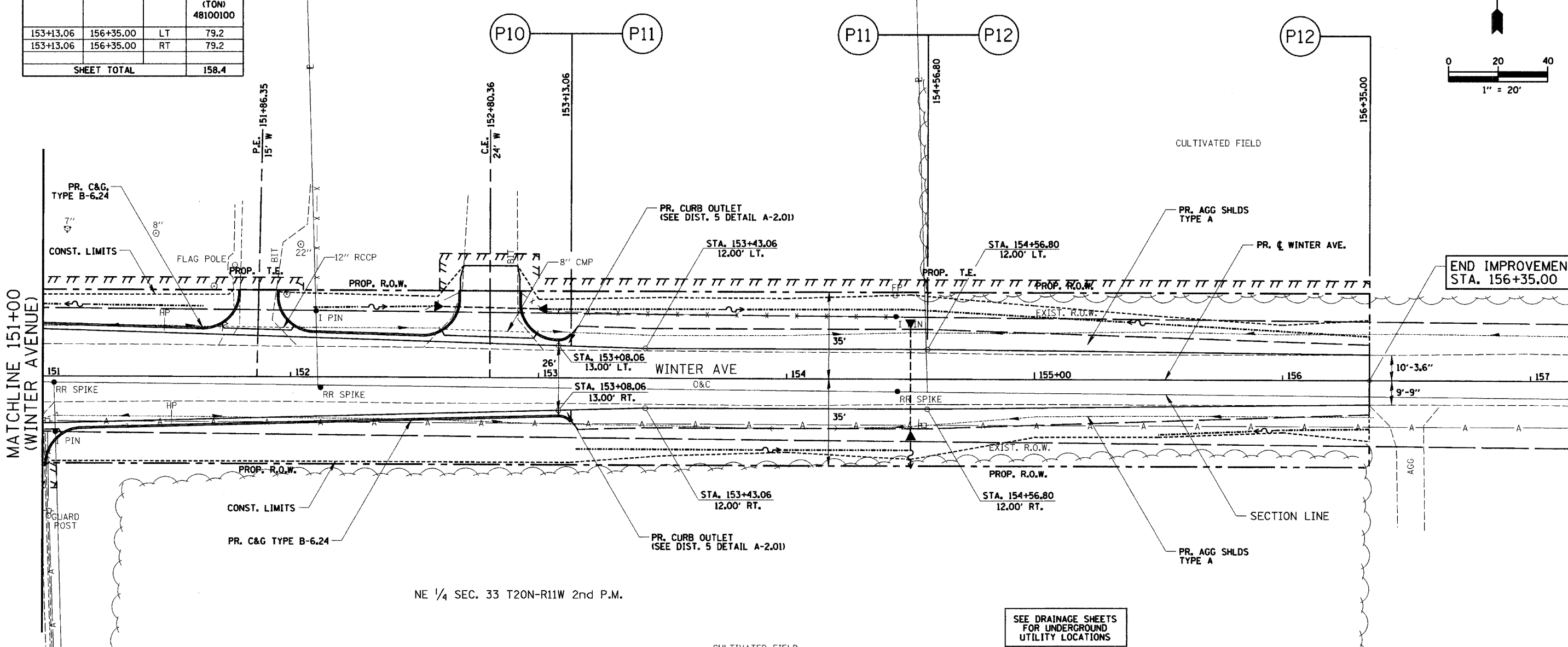
SW 1/4 SEC. 27 T20N-R11W 2nd P.M.



**AGGREGATE SHOULDERS, TYPE A**

FROM STATION	TO STATION	LT/RT	AGG SHLDS TY A (TON) 48100100
153+13.06	156+35.00	LT	79.2
153+13.06	156+35.00	RT	79.2
SHEET TOTAL			158.4

SEE ENTRANCE DETAILS FOR ENTRANCE DIMENSIONS



NE 1/4 SEC. 33 T20N-R11W 2nd P.M.

SEE DRAINAGE SHEETS FOR UNDERGROUND UTILITY LOCATIONS

PLAN	DATE	BY
SURVEYED		
DESIGNED		
CHECKED		
DATE		
NO.		

**ENTRANCE QUANTITY SCHEDULE**

TYPE	STATION	LT/RT	AGG BASE CSE B (CU YD) 35101500	AGG SURF CSE B (TONS) 40200800	BIT MATLS PR CT (GAL) 40800010	INCIDENTAL HMA SURF (TONS) 40800050	PCC DRIVEWAY PAVT 6 (SQ YD) 42300200	TEMP ACCESS-PRIV ENT (EACH) X4021000	TEMP ACCESS-COM ENT (EACH) X4022000
P.E.	151+86.35	LT	--	--	--	--	37.0	1	--
C.E.	152+80.36	LT	5.9	--	9.2	4.4	60.5	--	1
SHEET TOTALS			5.9	--	9.2	4.4	97.5	1	1

**COMBINATION CONCRETE CURB & GUTTER, TYPE B-6.24**

FROM STATION	TO STATION	LT/RT	COMB CC&G TB6.24 (FT) 60605000	PROT COAT (SY) 42001300
151+00.00	153+08.06	LT	208.2	69.4
151+00.00	153+08.06	RT	208.2	69.4
SHEET TOTAL			416.4	138.8

**CLASS SI CONCRETE (OUTLET)**

STATION	LT/RT	CLASS SI CONC OUTLET (CU YD) 60600095	PROT COAT (SY) 42001300
153+08.06	LT	0.56	2.3
153+08.06	RT	0.56	2.3
SHEET TOTAL		1.12	4.6

REVISIONS	
NAME	DATE

CITY OF DANVILLE, ILLINOIS  
**WINTER AVENUE RECONSTRUCTION  
 PROPOSED ROADWAY PLAN  
 WINTER AVENUE  
 STA. 151+00 TO STA. 157+00**

SCALE: 1" = 20'  
 DRAWN BY: NIL  
 DATE: 12/21/06  
 CHECKED BY: MBF