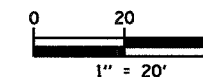
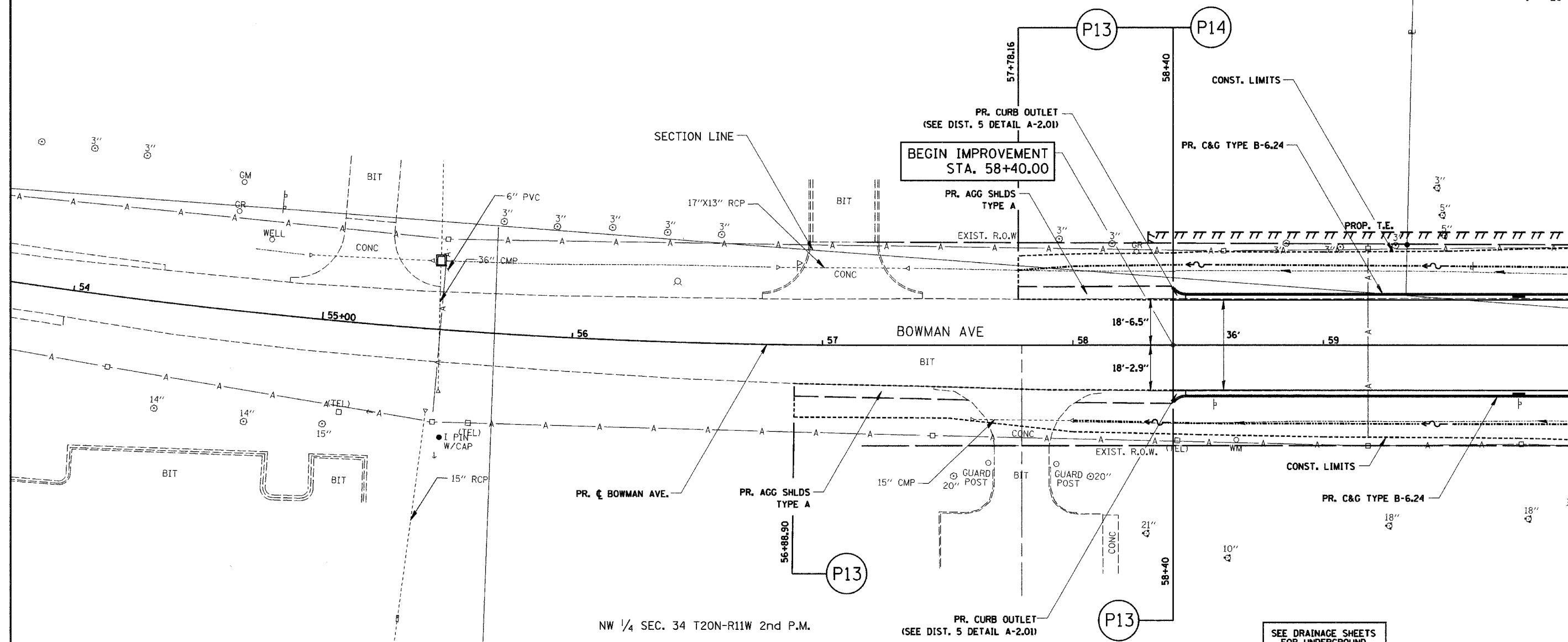


NE 1/4 SEC. 33 T20N-R11W 2nd P.M.

F.A.U. RTE.	SECTION	COUNTY	TOTAL SHEETS	SHEET NO.
6998	99-00209-01-PV	VERMILION	296	45
STA. 54+00		TO STA. 60+00		
FED. ROAD DIST. NO. ILLINOIS		FED. AID PROJECT-		
CONTRACT NO.: 91358				



PLAN	DATE
SURVEYED	BY
PLANNED	BY
CHECKED	BY
NO. OF WAY CHECKED	
CARD FILE NAME	



NW 1/4 SEC. 34 T20N-R11W 2nd P.M.

SEE DRAINAGE SHEETS FOR UNDERGROUND UTILITY LOCATIONS

AGGREGATE SHOULDERS, TYPE A

FROM STATION	TO STATION	LT/RT	AGG SHLDS TY A (TON) 48100100
56+88.90	57+59.13	RT	11.8
58+00.13	58+40.00	RT	6.3
57+78.16	58+40.00	LT	11.3
SHEET TOTAL			29.4

COMBINATION CONCRETE CURB & GUTTER, TYPE B-6.24

FROM STATION	TO STATION	LT/RT	COMB CC&G TB6.24 (FT) 60605000	PROT COAT (SY) 42001300
58+45.00	60+00.00	LT	155.0	51.7
58+45.00	60+00.00	RT	155.0	51.7
SHEET TOTAL			310.0	103.4

CLASS SI CONCRETE (OUTLET)

STATION	LT/RT	CLASS SI CONC OUTLET (CU YD) 60600095	PROT COAT (SY) 42001300
58+45.00	LT	0.56	2.3
58+45.00	RT	0.56	2.3
SHEET TOTAL		1.12	4.6

REVISIONS	
NAME	DATE

CITY OF DANVILLE, ILLINOIS
WINTER AVENUE RECONSTRUCTION
PROPOSED ROADWAY PLAN
BOWMAN AVENUE
 STA. 54+00 TO STA. 60+00

SCALE: 1" = 20'
 DATE: 12/21/06
 DRAWN BY: NIL
 CHECKED BY: MBF