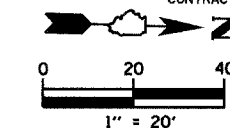


SE 1/4 SEC. 28 T20N-R11W 2nd P.M.

F.A.I. RTE.	SECTION	COUNTY	TOTAL SHEETS	SHEET NO.
6998	99-00209-01-PV	VERMILION	296	47
STA. 63+50		TO STA. 69+50		
FED. ROAD DIST. NO. ILLINOIS		FED. AID PROJECT-		

CONTRACT NO.: 91358

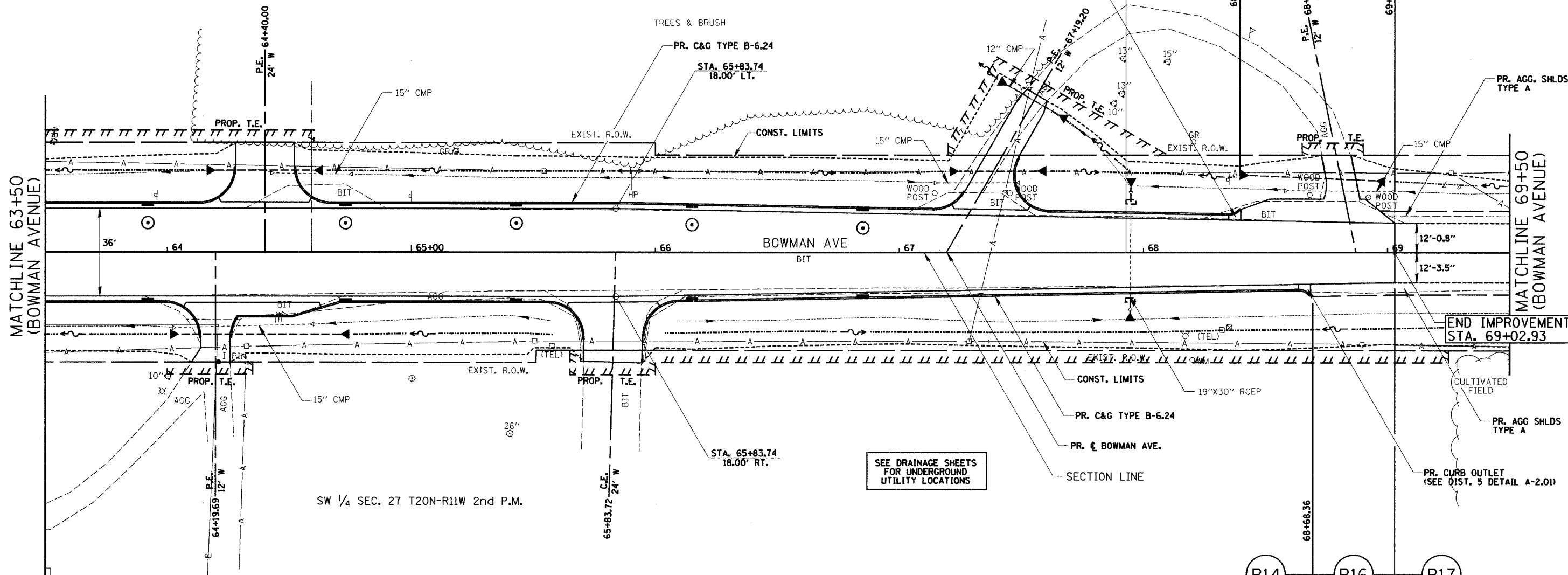


ENTRANCE QUANTITY SCHEDULE

TYPE	STATION	LT/RT	AGG BASE CSE B (CU YD)	AGG SURF CSE B (TONS)	BIT MATLS PR CT (GAL)	INCIDENTAL HMA SURF (TONS)	PCC DRIVEWAY PAVT 6 (SQ YD)	TEMP ACCESS-PRIV ENT (EACH)	TEMP ACCESS-COM ENT (EACH)
P.E.	64+19.69	RT	--	--	--	--	62.7	1	--
P.E.	64+40.00	LT	--	--	--	--	75.3	1	--
C.E.	65+83.72	RT	2.9	--	4.5	2.2	62.7	--	1
P.E.	67+19.20	LT	--	11.0	--	--	51.2	1	--
P.E.	68+86.99	LT	--	--	--	--	81.4	1	--
SHEET TOTALS			2.9	11.0	4.5	2.2	333.3	4	1

SEE ENTRANCE DETAILS FOR ENTRANCE DIMENSIONS

DATE	
BY	
PLANNED	
NOTED	
CHECKED	
DATE	
BY	
PLANNED	
NOTED	
CHECKED	
DATE	
BY	



SEE DRAINAGE SHEETS FOR UNDERGROUND UTILITY LOCATIONS

AGGREGATE SHOULDERS, TYPE A

FROM STATION	TO STATION	LT/RT	AGG SHLDS TY A (TON)
68+68.36	69+50.00	RT	14.9
68+96.22	69+50.00	LT	9.3
SHEET TOTAL			24.2

COMBINATION CONCRETE CURB & GUTTER, TYPE B-6.24

FROM STATION	TO STATION	LT/RT	COMB CC&G TB6.24 (FT)	PROT COAT (SY)
63+50.00	68+34.82	LT	484.9	161.6
63+50.00	68+63.36	RT	513.4	171.1
SHEET TOTAL			998.3	332.7

CLASS SI CONCRETE (OUTLET)

STATION	LT/RT	CLASS SI CONC OUTLET (CU YD)	PROT COAT (SY)
68+34.82	LT	0.56	2.3
68+63.36	RT	0.56	2.3
SHEET TOTAL		1.12	4.6

REVISIONS	
NAME	DATE

CITY OF DANVILLE, ILLINOIS
**WINTER AVENUE RECONSTRUCTION
 PROPOSED ROADWAY PLAN
 BOWMAN AVENUE
 STA. 63+50 TO STA. 69+50**

SCALE: 1" = 20'
 DATE: 12/21/06
 DRAWN BY: NIL
 CHECKED BY: MBF