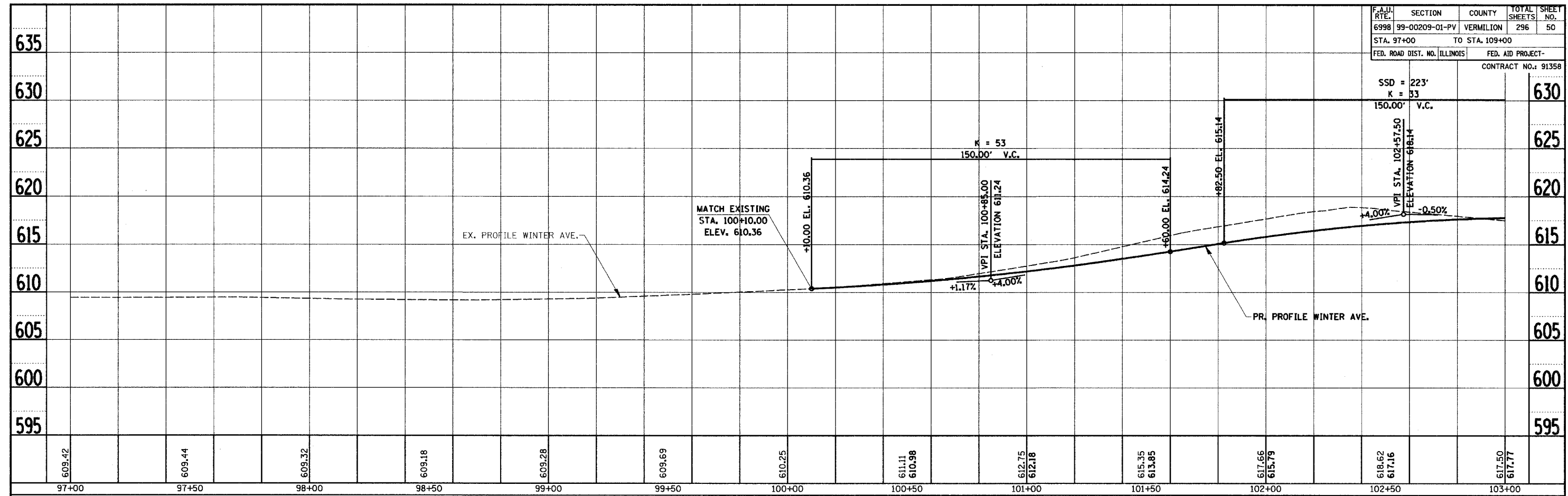


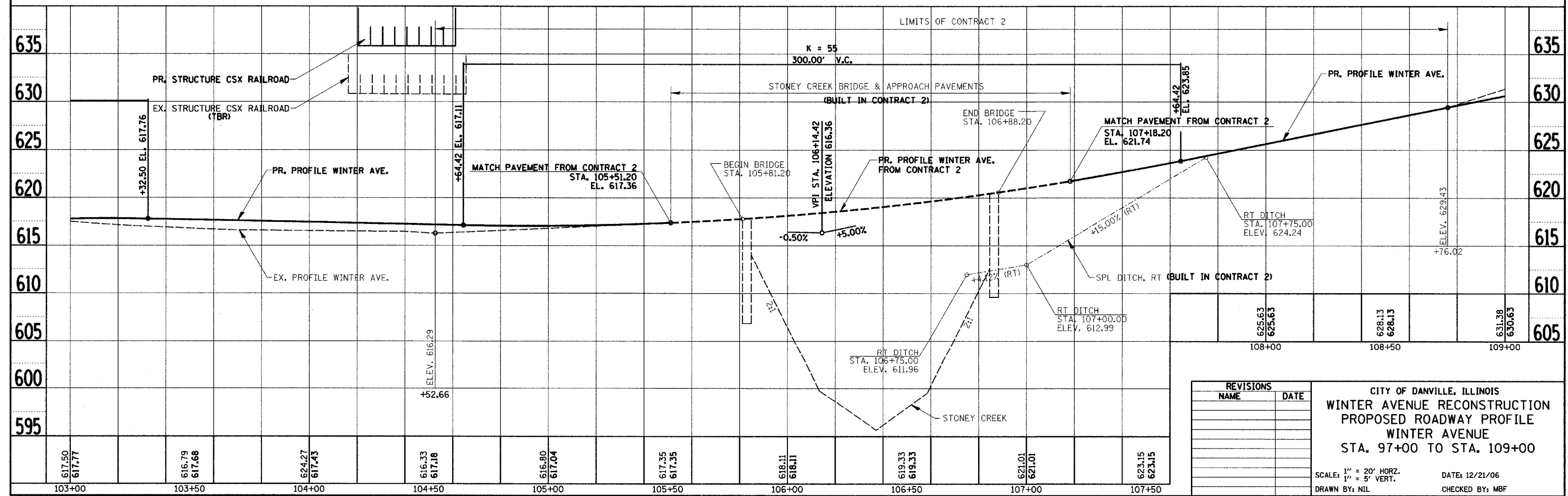
F.A.U. RTE.	SECTION	COUNTY	TOTAL SHEETS	SHEET NO.
6998	99-00209-01-PV	VERMILION	296	50
STA. 97+00		TO STA. 109+00		
FED. ROAD DIST. NO. ILLINOIS		FED. AID PROJECT-		
CONTRACT NO.: 91358				

SSD = 223'
K = 33
150.00' V.C.VPI STA. 102+57.50
ELEVATION 618.14

DATE	
BY	
PROFILER	
PLOTTED	
CHECKED	
DATE	
BY	
NOTE BOOK NO.	
STRUCTURE NOTATION	
DATE	
BY	
PROFILER	
PLOTTED	
CHECKED	
DATE	
BY	
NOTE BOOK NO.	
STRUCTURE NOTATION	



DATE	
BY	
PROFILER	
PLOTTED	
CHECKED	
DATE	
BY	
NOTE BOOK NO.	
STRUCTURE NOTATION	
DATE	
BY	
PROFILER	
PLOTTED	
CHECKED	
DATE	
BY	
NOTE BOOK NO.	
STRUCTURE NOTATION	



REVISIONS	
NAME	DATE

CITY OF DANVILLE, ILLINOIS
WINTER AVENUE RECONSTRUCTION
PROPOSED ROADWAY PROFILE
WINTER AVENUE
STA. 97+00 TO STA. 109+00

SCALE: 1" = 20' HORIZ.
1" = 5' VERT.

DATE: 12/21/06
DRAWN BY: NIL
CHECKED BY: MBF