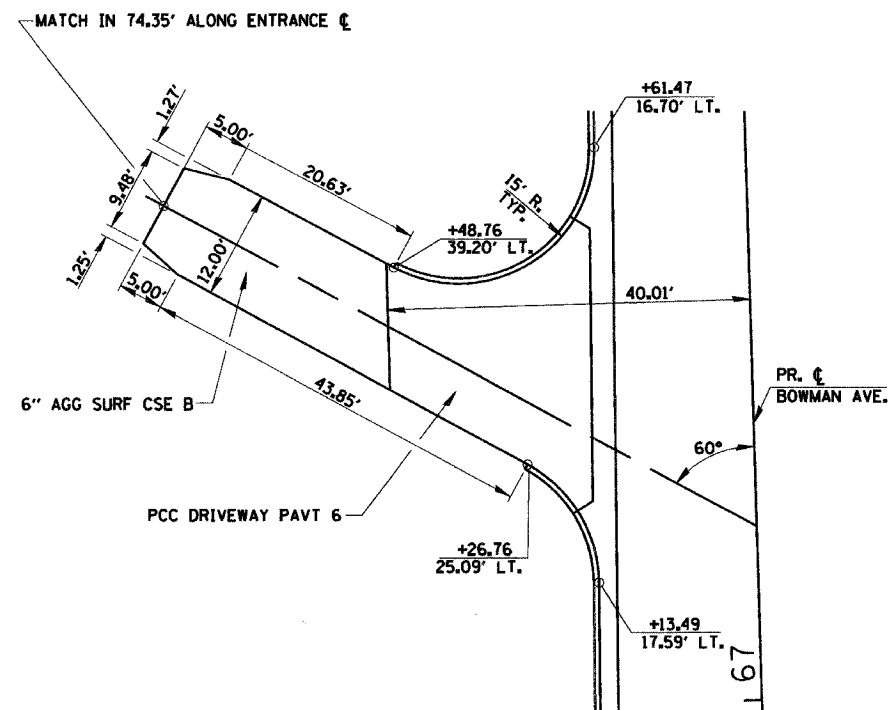


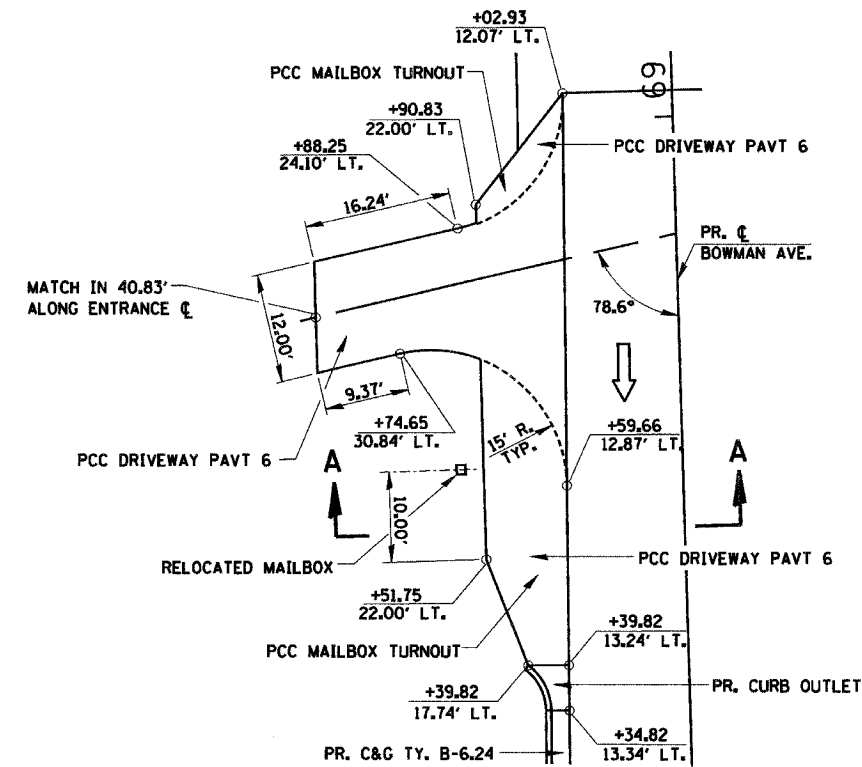
PLAN	SURVEYED	DATE
	PLOTTED	
	CHECKED	
	BY	
	NO.	



PRIVATE ENTRANCE DETAIL
(P.E.) 67+19.20

SEE DIST. 5 DETAIL C-1.14

SEE ENTRANCE TYPICAL SECTIONS (SHEET 5 OF 5)

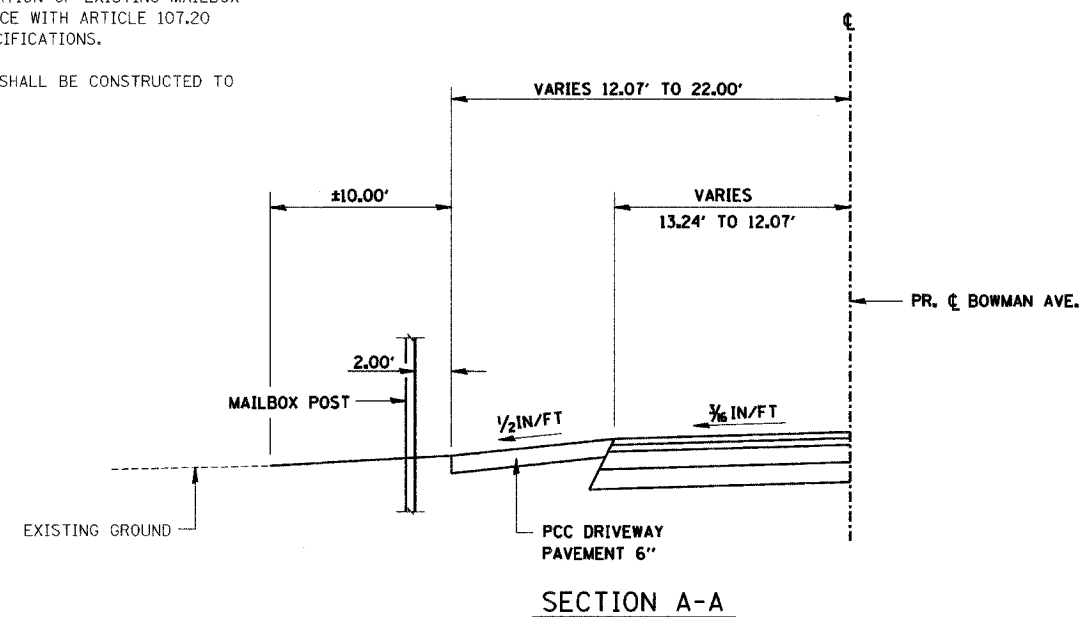


PRIVATE ENTRANCE DETAIL
(P.E.) 68+86.99

NOTES

THE TEMPORARY RELOCATION OF EXISTING MAILBOX SHALL BE IN ACCORDANCE WITH ARTICLE 107.20 OF THE STANDARD SPECIFICATIONS.

ENTRANCE SIDESLOPES SHALL BE CONSTRUCTED TO 1:4 SLOPES.



SECTION A-A

REVISIONS	
NAME	DATE

CITY OF DANVILLE, ILLINOIS
WINTER AVENUE RECONSTRUCTION
ENTRANCE DETAILS

SCALE: 1" = 10'
DRAWN BY: TDN

DATE: 12/21/06
CHECKED BY: MBF