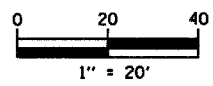


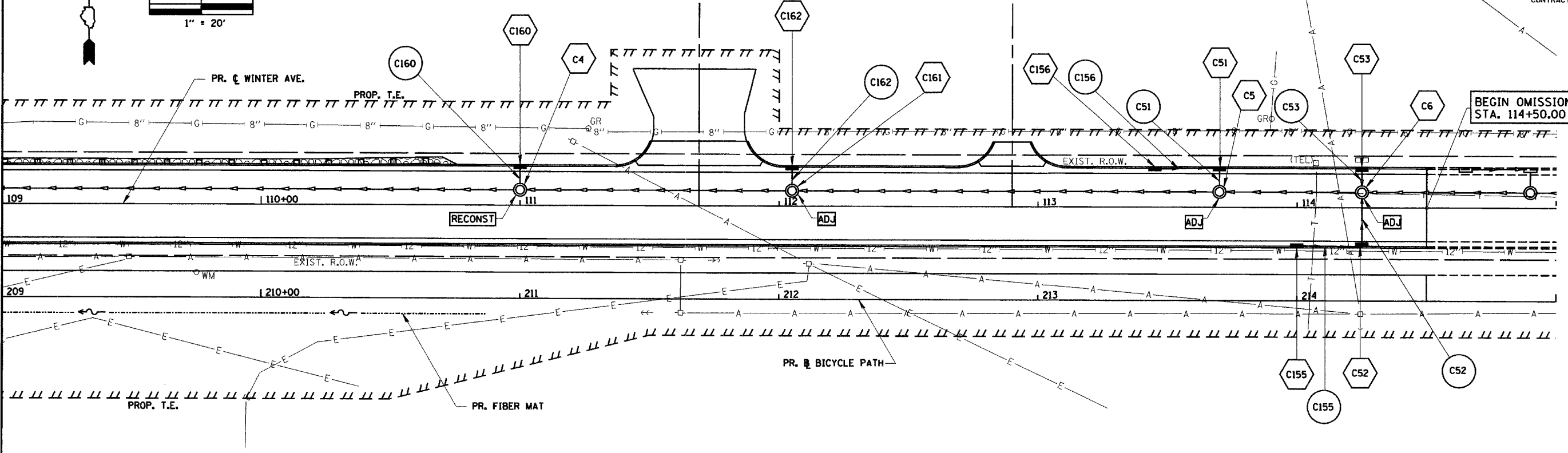
F.A.I. RTE.	SECTION	COUNTY	TOTAL SHEETS	SHEET NO.
6998	99-00209-01-PV	VERMILION	296	79
STA. 109+00		TO STA. 115+00		
FED. ROAD DIST. NO. ILLINOIS		FED. AID PROJECT- CONTRACT NO.: 91358		



PLAN	SURVEYED	DATE
NO.	BY	
	CHECKED	
	DATE	
	NO.	
	BY	
	CHECKED	
	DATE	
	NO.	
	BY	
	CHECKED	
	DATE	
	NO.	
	BY	
	CHECKED	
	DATE	
	NO.	

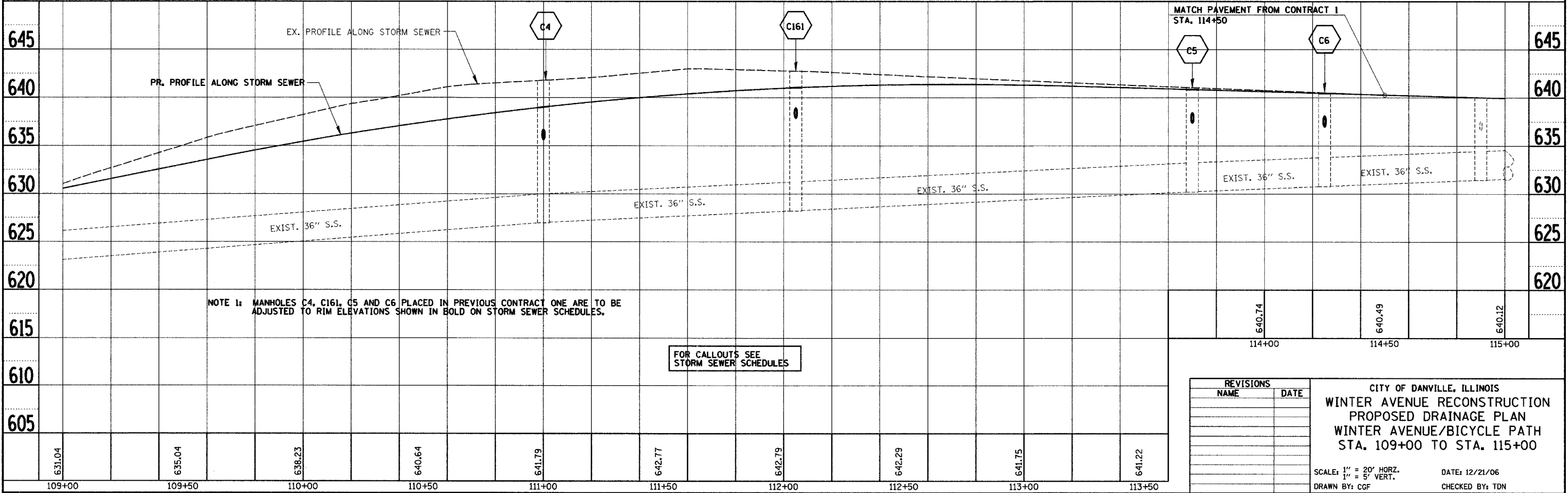
MATCHLINE 109+00 (WINTER AVENUE)

MATCHLINE 209+00 (BICYCLE PATH)



BEGIN OMISSION
STA. 114+50.00

PROFILE	SURVEYED	DATE
NO.	BY	
	CHECKED	
	DATE	
	NO.	
	BY	
	CHECKED	
	DATE	
	NO.	
	BY	
	CHECKED	
	DATE	
	NO.	



NOTE 1: MANHOLES C4, C161, C5 AND C6 PLACED IN PREVIOUS CONTRACT ONE ARE TO BE ADJUSTED TO RIM ELEVATIONS SHOWN IN BOLD ON STORM SEWER SCHEDULES.

FOR CALLOUTS SEE STORM SEWER SCHEDULES

REVISIONS	
NAME	DATE

CITY OF DANVILLE, ILLINOIS
**WINTER AVENUE RECONSTRUCTION
 PROPOSED DRAINAGE PLAN
 WINTER AVENUE/BICYCLE PATH
 STA. 109+00 TO STA. 115+00**

SCALE: 1" = 20' HORIZ.
 1" = 5' VERT.
 DRAWN BY: CGF
 DATE: 12/21/06
 CHECKED BY: TDN

631.04	635.04	638.23	640.64	641.79	642.77	642.79	642.29	641.75	641.22
109+00	109+50	110+00	110+50	111+00	111+50	112+00	112+50	113+00	113+50