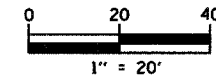


F.A.U. SECTION	COUNTY	TOTAL SHEETS	SHEET NO.
6998 99-00209-01-PV	VERMILION	296	93
STA.	TO STA.	FED. AID PROJECT-	
FED. ROAD DIST. NO.	ILLINOIS	CONTRACT NO.: 91358	



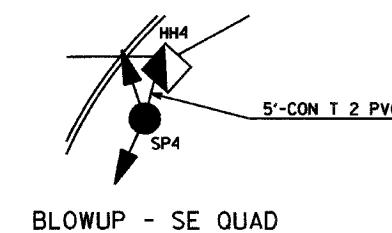
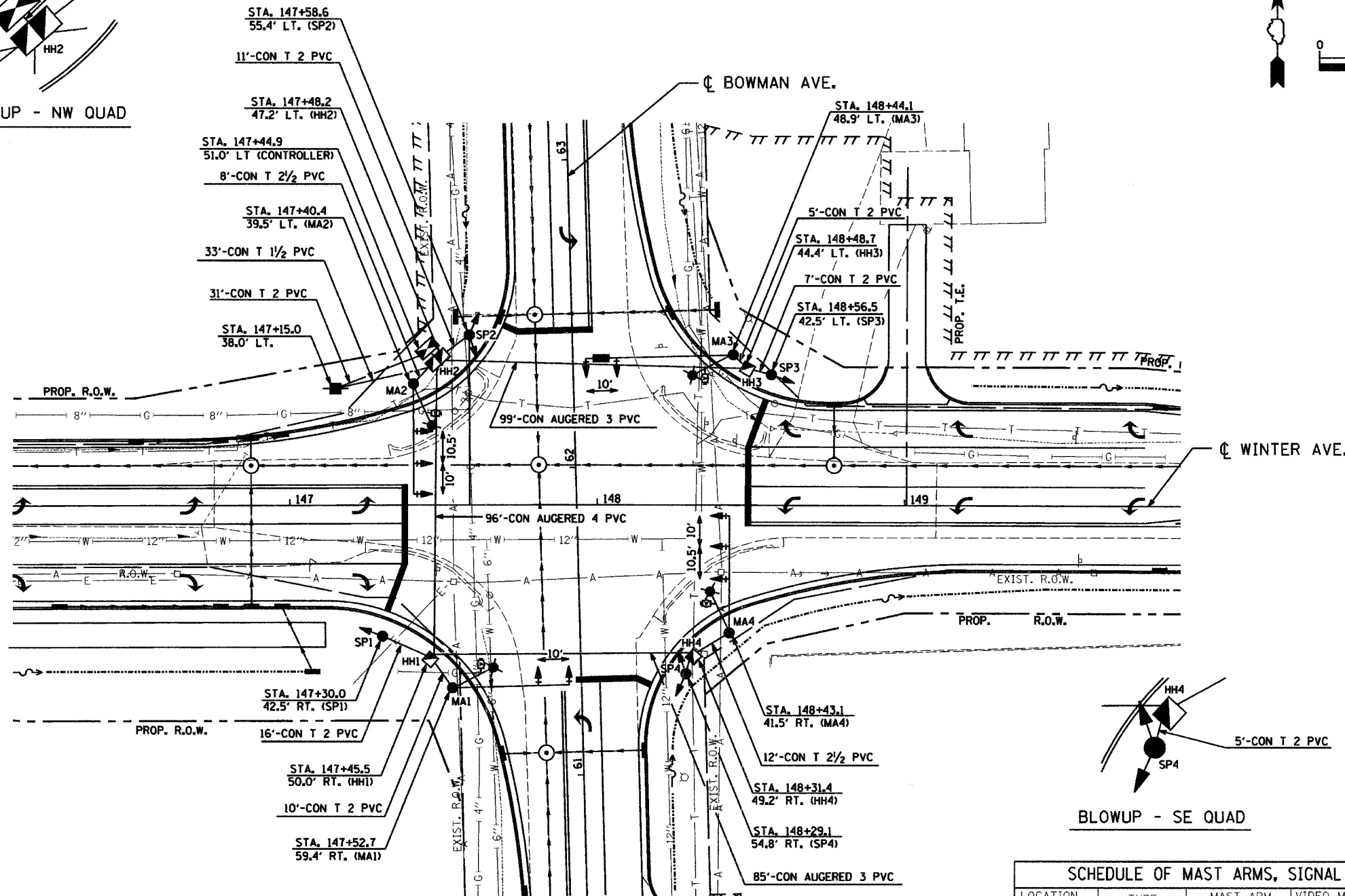
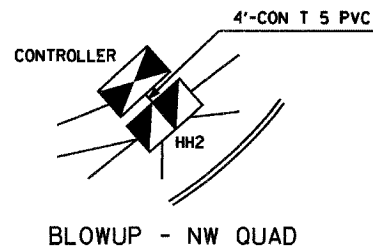
VIDEO DETECTION ZONE - PRESENCE

APPROACH	LANE	LENGTH OF DETECTION
NORTH	LT - THRU	45 FT
SOUTH	LT - THRU	45 FT
EAST	LT - THRU	45 FT
WEST	LT - THRU	45 FT

VIDEO DETECTION ZONE - ADVANCED

APPROACH	LANE	ZONE LOCATION*
NORTH	THRU	240 FT
SOUTH	THRU	240 FT
EAST	THRU	240 FT
WEST	THRU	240 FT

* DISTANCE FROM STOP BAR



LEGEND

- PROPOSED CONTROLLER AND CABINET
- PROPOSED SIGNAL HEAD AND POST
- PROPOSED COMBINATION MAST ARM ASSEMBLY W/ LUMINAIRE, SIGNAL HEAD, BACKPLATE
- PROPOSED VIDEO DETECTOR
- PROPOSED HANDHOLE
- PROPOSED DOUBLE HANDHOLE
- PROPOSED SERVICE INSTALLATION
- PROPOSED MAST ARM DAMPENING DEVICE

SCHEDULE OF MAST ARMS, SIGNAL POSTS AND BASES

LOCATION	TYPE	MAST ARM LENGTH, FT	VIDEO MOUNTING HEIGHT, FT	TYPE A 24 IN	TYPE D	TYPE E 36 IN
MA1	STEEL	38.0	41.0	-	-	11.0 FT
SP1	ALUMINUM	-	-	3.0 FT	-	-
MA2	STEEL	36.0	41.0	-	-	11.0 FT
SP2	ALUMINUM	-	-	3.0 FT	-	-
MA3	STEEL	48.0	41.0	-	-	13.0 FT
SP3	ALUMINUM	-	-	3.0 FT	-	-
MA4	STEEL	38.0	41.0	-	-	11.0 FT
SP4	ALUMINUM	-	-	3.0 FT	-	-
CONTROLLER	-	-	-	-	3.0 FT	-

REVISIONS	
NAME	DATE

CITY OF DANVILLE, ILLINOIS
WINTER AVENUE RECONSTRUCTION
PROPOSED TRAFFIC SIGNAL
SIGNAL LAYOUT
BOWMAN AVENUE & WINTER AVENUE
SHEET 1 OF 3
 SCALE: 1" = 20'
 DATE: 12/21/06
 DRAWN BY: SRS
 CHECKED BY: MBF

DATE	
BY	
PLAN	
SURVEYED	
PLOTTED	
CHECKED	
DATE	
NO. OF PAGES	
FILE NAME	
NO.	