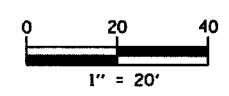


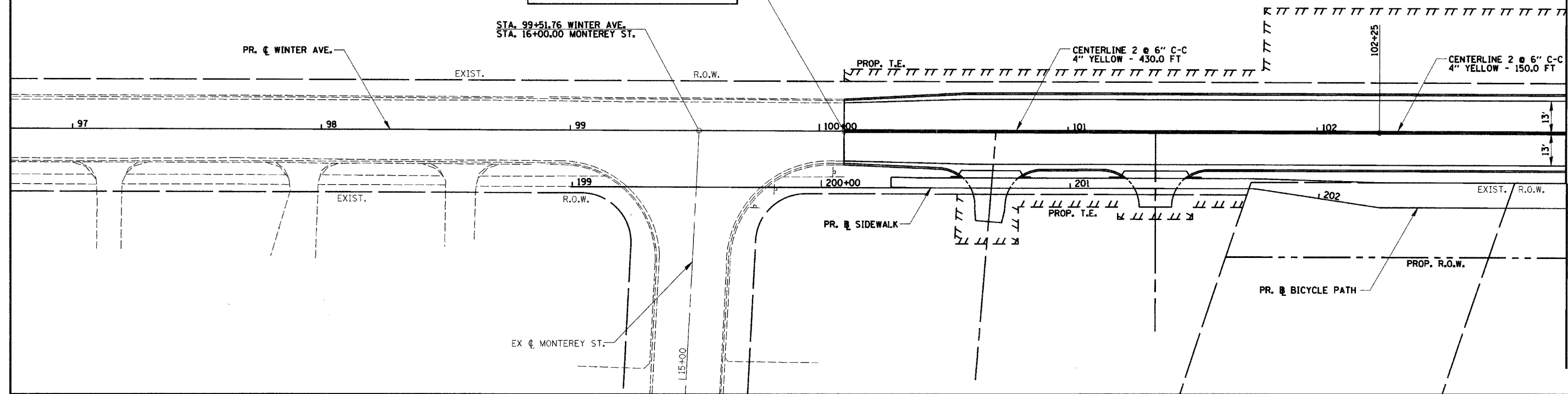
PLAN	DATE
SURVEYED	BY
DESIGNED	BY
CHECKED	BY
IN CHARGE	BY
NOTE BOOK NO.	
FIELD FILE NAME	

F.A.U. RTE.	SECTION	COUNTY	TOTAL SHEETS	SHEET NO.
6998	99-00209-01-PV	VERMILION	296	96
STA. 97+00	TO STA. 109+00			
FED. ROAD DIST. NO. ILLINOIS	FED. AID PROJECT-			
CONTRACT NO.: 91358				



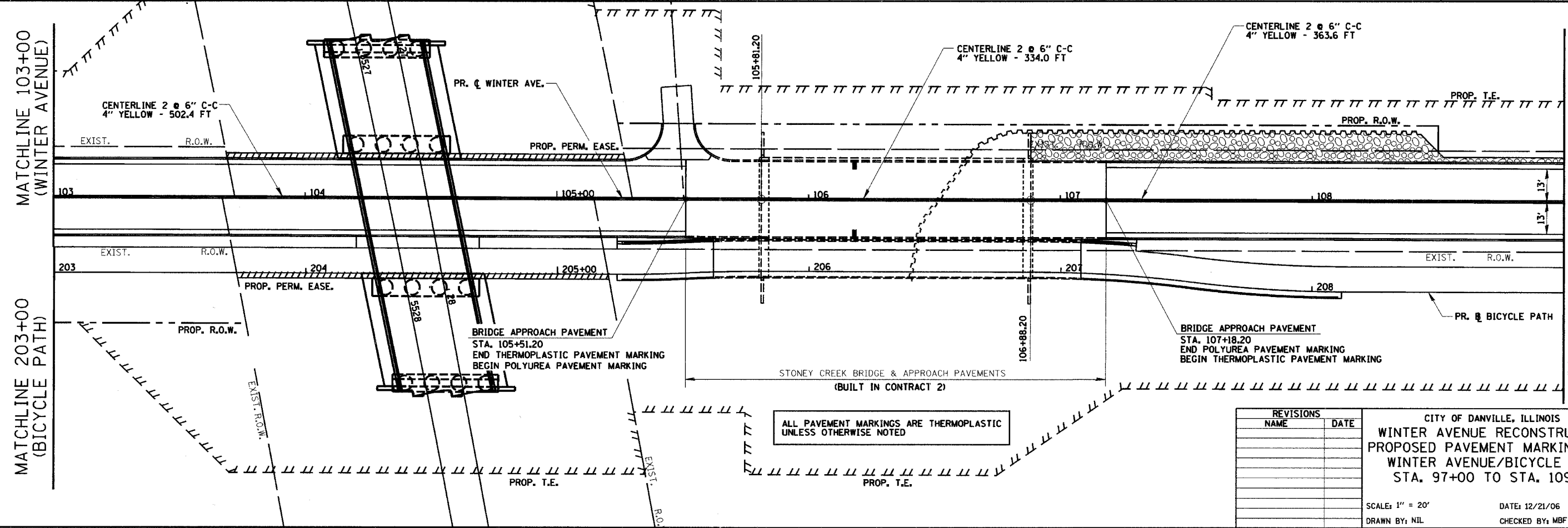
ALL PAVEMENT MARKINGS ARE THERMOPLASTIC UNLESS OTHERWISE NOTED

BEGIN IMPROVEMENT  
BEGIN PERMANENT STRIPING  
STA. 100+10.00



MATCHLINE 103+00  
(WINTER AVENUE)

MATCHLINE 203+00  
(BICYCLE PATH)



MATCHLINE 103+00  
(WINTER AVENUE)

MATCHLINE 203+00  
(BICYCLE PATH)

MATCHLINE 109+00  
(WINTER AVENUE)

MATCHLINE 209+00  
(BICYCLE PATH)

REVISIONS	
NAME	DATE

CITY OF DANVILLE, ILLINOIS  
WINTER AVENUE RECONSTRUCTION  
PROPOSED PAVEMENT MARKING PLAN  
WINTER AVENUE/BICYCLE PATH  
STA. 97+00 TO STA. 109+00

SCALE: 1" = 20'  
DRAWN BY: NIL

DATE: 12/21/06  
CHECKED BY: MBF