

BENCHMARK:

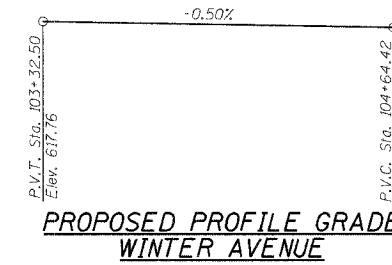
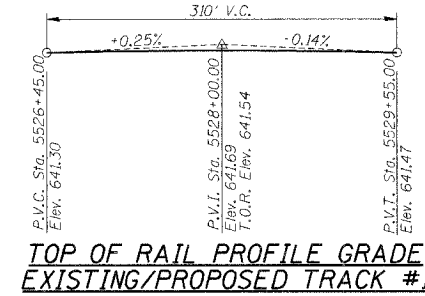
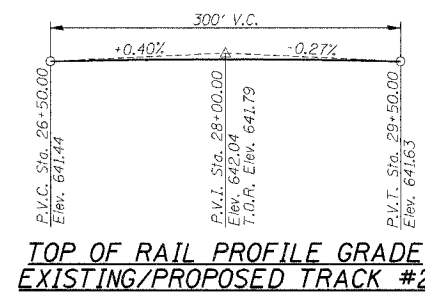
Chiseled "X" in Concrete Pad
Sta. 98+91.22, 14.51' Lt.
Elev. 609.28

EXISTING STRUCTURE:

Existing Str. No.: None
Cast-in-place Concrete Deck on
Closed Concrete Abutments with
Concrete Wingwalls.
148'-0" O.-O. of Deck
±25'-0" Bk.-Bk. Abutments

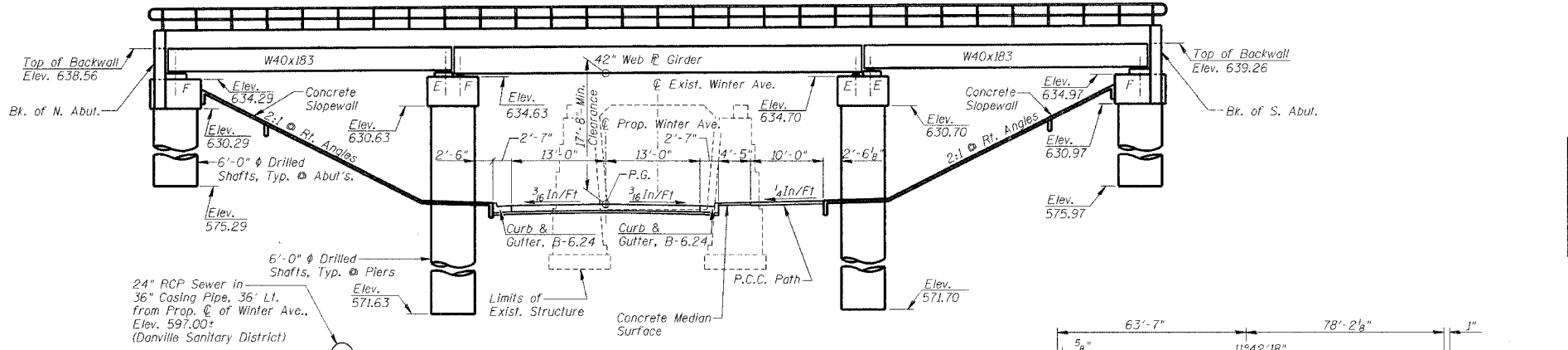
CURVE DATA
(Chord Definition)

Prop. Track #2 (30 mph)		Prop. Track #1 (60 mph)	
P.I. Sta. 25+31.09	Δ = 5° 27' 29" (RT)	P.I. Sta. 5527+57.61	Δ = 1° 59' 41" (RT)
D = 1° 04' 00"	T = 256.04'	D = 0° 43' 00"	T = 139.17'
R = 5,371.56'	L = 511.69'	R = 7,994.81'	L = 278.31'
E = 6.10'	P.C. Sta. 22+75.05	E = 1.21'	P.C. Sta. 5526+18.44
S.E. = 1/2", L = 31'	P.T. Sta. 27+86.74	S.E. = 1/2", L = 31'	P.T. Sta. 5528+96.75



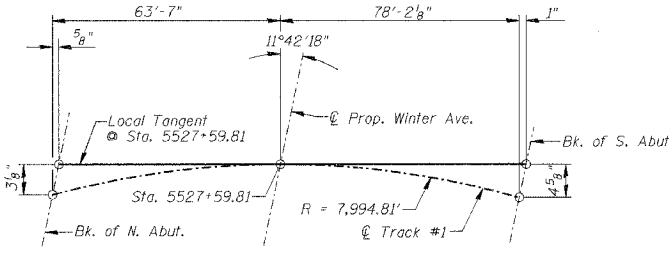
ROUTE NO.	SECTION	COUNTY	TOTAL SHEETS	NO.
WINTER AVE.	99-00209-01-PV	VERMILION	296	105

FED. ROAD DIST. NO. ILLINOIS PROJECT CONTRACT NO. 91358

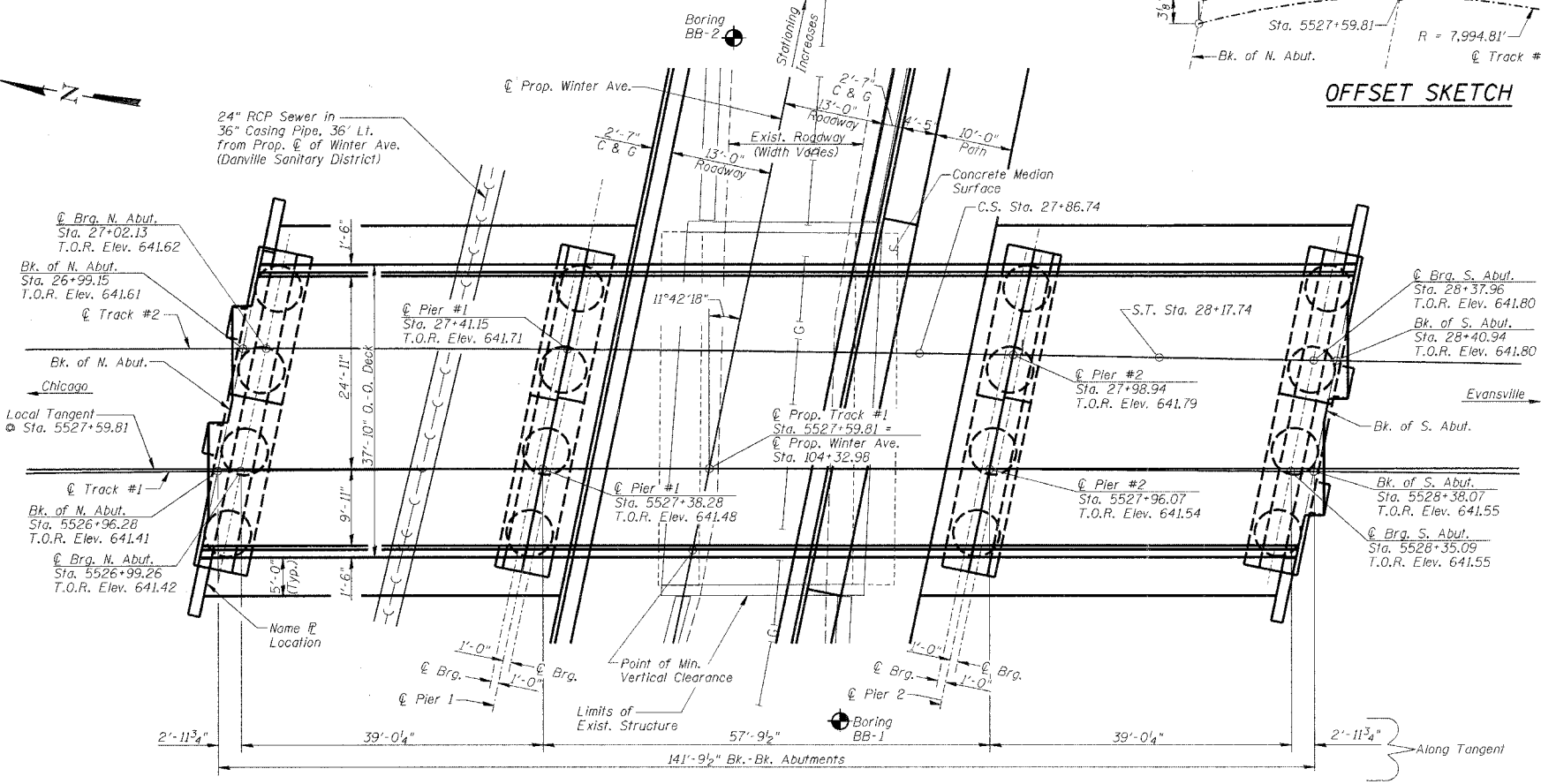


ELEVATION
(Looking East)

Note: All horizontal dimensions shown at 90° to Winter Ave.

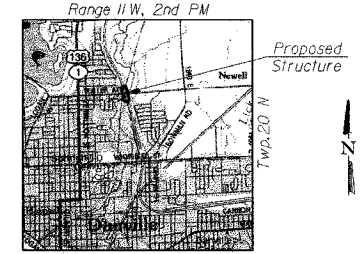


OFFSET SKETCH



PLAN

CSX TRANSPORTATION
BUILT 200 . BY
CITY OF DANVILLE
SECTION 99-00209-01-PV
STA. 5527+59.81
STR. NO. 092-6039
LOADING COOPER E-80
NAME PLATE
(See Std. 515001)



LOCATION SKETCH

DESIGN SPECIFICATIONS

American Railway Engineering & Maintenance-of-Way Association (AREMA) Manual for Railway Engineering, 2006.
2007 AASHTO Standard Specifications for Highway Bridges.

DESIGN STRESSES

FIELD UNITS
f'c = 4,000 p.s.i.
fy = 60,000 p.s.i. (Reinforcement)
fy = 50,000 p.s.i. (Struct.) (M270 Grade 50)
fy = 36,000 p.s.i. (Struct.) (M270 Grade 36)

LOADING COOPER E-80

Cooper E80 plus Impact for equipment without hammer blow.
Service Load Design (CSX R.R. Bridge)
Allow for future addition of 6" ballast.

SEISMIC DATA

Seismic Performance Category (SPC) = A
Bedrock Acceleration Coefficient (A) = .048g
Site Coefficient (S) = 1.5

CSX RAILROAD

Class: Railroad
Milepost: 121.63
DOT/AAR 353709 T
ADT: 24 Ave. Freight Trains Per Day (Combined)
0 Passenger Trains Per Day (Combined)
Design Speed: 30 mph (Track #2)
60 mph (Track #1)



DATE: January 24, 2007
Keith W. Benting
ILL. STRUCTURAL NO. 4777
Exp. 11/30/2008

I certify to the best of my knowledge, information and belief, this bridge/box culvert design is structurally adequate for the design loading shown on the plans. The design is an economical one for the style of structure and complies with requirements of the current AREMA Standard Specifications.

GENERAL PLAN AND ELEVATION

Date	Designed	MJP	CSX TRANSPORTATION R.R. OVER WINTER AVE. MP OZA 121.6 SECTION 99-00209-01-PV CITY OF DANVILLE, IL VERMILION COUNTY STA. 5527+59.81 PROP. STR. NO. 092-6039	Sheet No.
Revisions	Drawn	REZ		1
	Checked	KWB		
	Approved	KWB		
Prepared by:	URS 345 East Ash Avenue, Suite B Decatur, IL 62526			of 24 URS Job No. 36430866