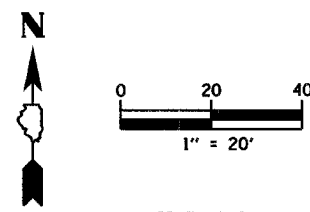
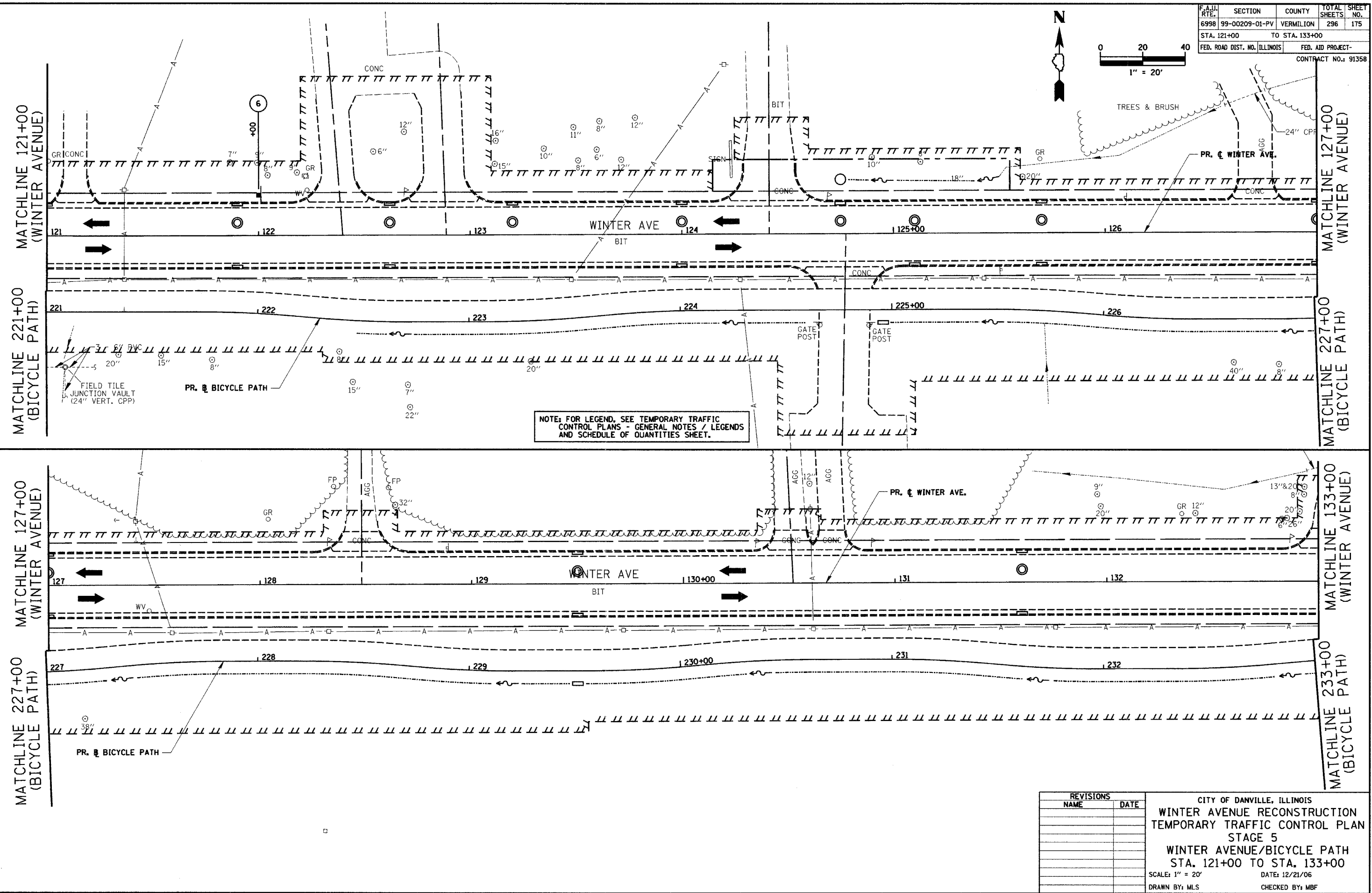


| | |
|--------------------|--|
| DATE | |
| BY | |
| PLAN | |
| NO. | |
| NO. OF WAY CHECKED | |
| NO. OF WAY CHECKED | |
| NO. OF WAY CHECKED | |
| NO. OF WAY CHECKED | |

| | | | | |
|------------------------------|---------------------|-----------|--------------|-----------|
| F.A.I. RTE. | SECTION | COUNTY | TOTAL SHEETS | SHEET NO. |
| 6998 | 99-00209-01-PV | VERMILION | 296 | 175 |
| STA. 121+00 | TO STA. 133+00 | | | |
| FED. ROAD DIST. NO. ILLINOIS | FED. AID PROJECT- | | | |
| | CONTRACT NO.: 91358 | | | |



NOTE: FOR LEGEND, SEE TEMPORARY TRAFFIC CONTROL PLANS - GENERAL NOTES / LEGENDS AND SCHEDULE OF QUANTITIES SHEET.

| REVISIONS | |
|-----------|------|
| NAME | DATE |
| | |
| | |
| | |
| | |
| | |
| | |
| | |
| | |
| | |
| | |

CITY OF DANVILLE, ILLINOIS
WINTER AVENUE RECONSTRUCTION
TEMPORARY TRAFFIC CONTROL PLAN
STAGE 5
WINTER AVENUE/BICYCLE PATH
STA. 121+00 TO STA. 133+00
 SCALE: 1" = 20' DATE: 12/21/06
 DRAWN BY: MLS CHECKED BY: MBF