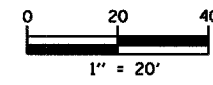
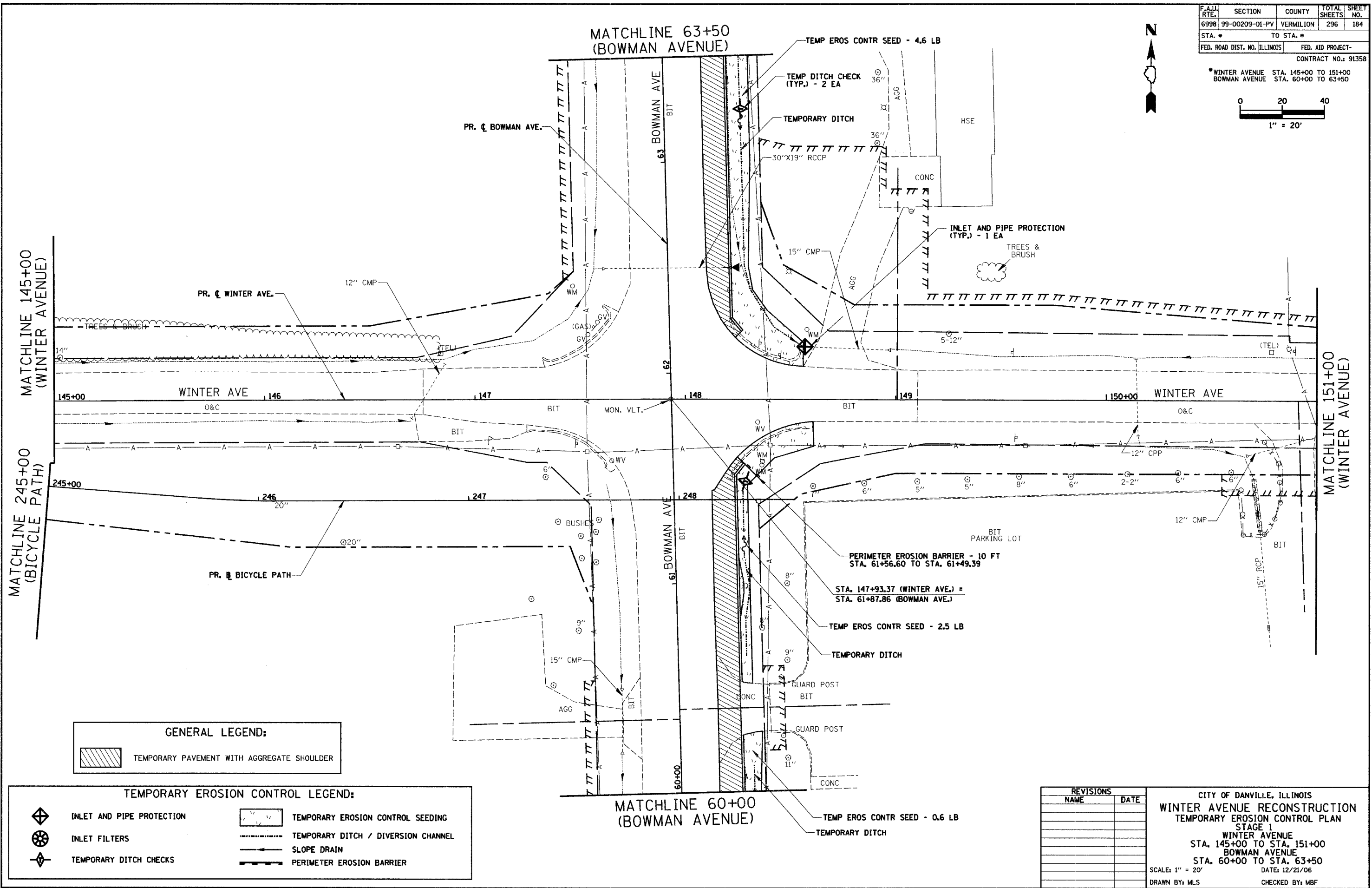


F.A.U. RTE.	SECTION	COUNTY	TOTAL SHEETS	SHEET NO.
6998	99-00209-01-PV	VERMILION	296	184
STA. #	TO STA. #			
FED. ROAD DIST. NO. ILLINOIS	FED. AID PROJECT-			
CONTRACT NO.: 91358				

* WINTER AVENUE STA. 145+00 TO 151+00
 BOWMAN AVENUE STA. 60+00 TO 63+50



PLAN	SURVEYED	DATE
NO. _____	BY _____	_____
NOTE BOOK	PLANNED	
NO. _____	BY _____	
BY _____	DATE _____	
NO. _____	BY _____	
NO. _____	BY _____	



GENERAL LEGEND:

TEMPORARY PAVEMENT WITH AGGREGATE SHOULDER

TEMPORARY EROSION CONTROL LEGEND:

INLET AND PIPE PROTECTION	TEMPORARY EROSION CONTROL SEEDING
INLET FILTERS	TEMPORARY DITCH / DIVERSION CHANNEL
TEMPORARY DITCH CHECKS	SLOPE DRAIN
	PERIMETER EROSION BARRIER

REVISIONS	
NAME	DATE

CITY OF DANVILLE, ILLINOIS
WINTER AVENUE RECONSTRUCTION
 TEMPORARY EROSION CONTROL PLAN
 STAGE 1
 WINTER AVENUE
 STA. 145+00 TO STA. 151+00
 BOWMAN AVENUE
 STA. 60+00 TO STA. 63+50
 SCALE: 1" = 20'
 DATE: 12/21/06
 DRAWN BY: MLS
 CHECKED BY: MBF