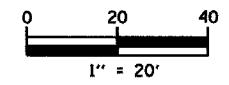
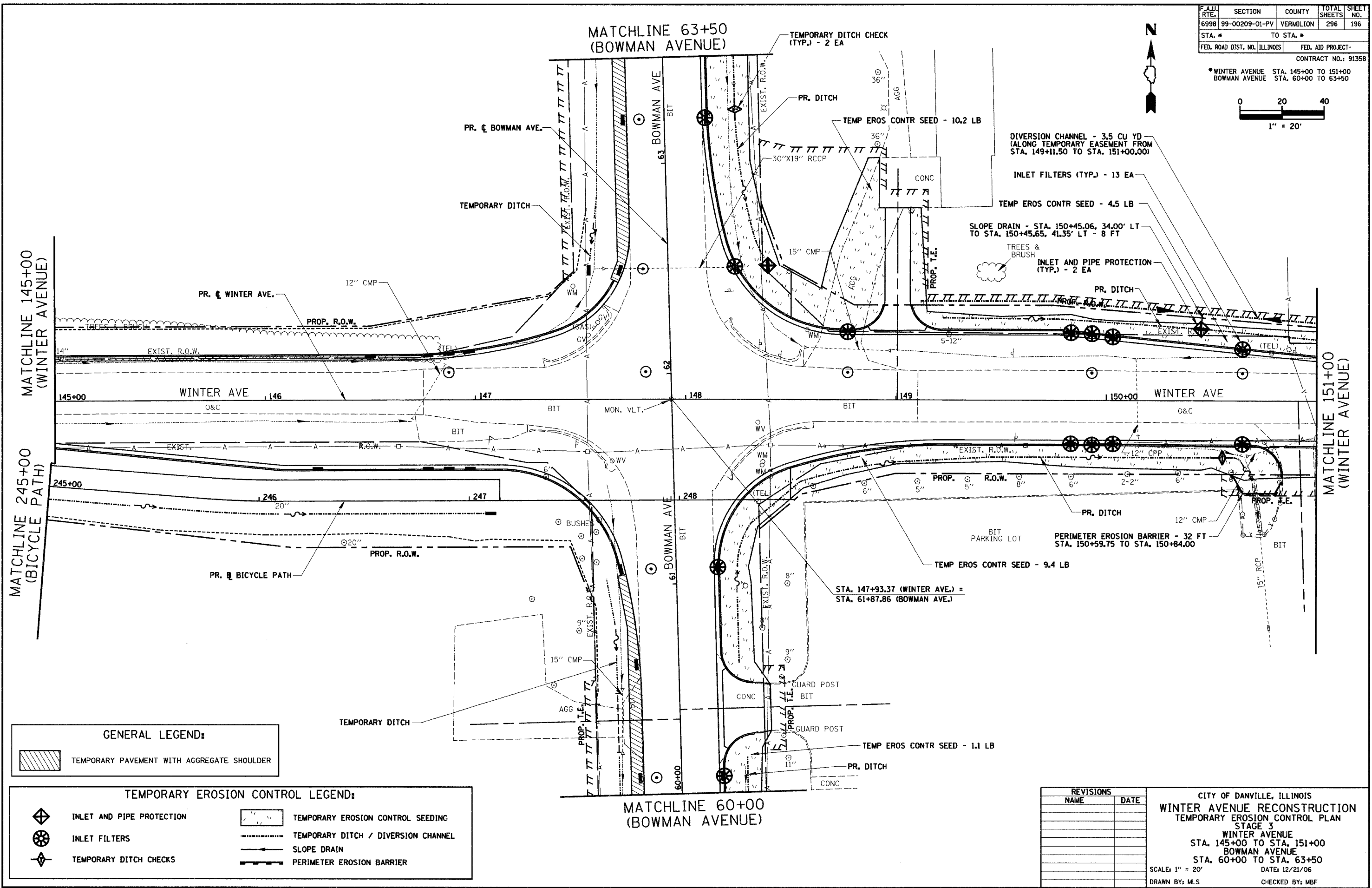


F.A.I.D. RTE.	SECTION	COUNTY	TOTAL SHEETS	SHEET NO.
6998	99-00209-01-PV	VERMILION	296	196
STA. #	TO STA. #			
FED. ROAD DIST. NO., ILLINOIS	FED. AID PROJECT-			
CONTRACT NO.: 91358				

* WINTER AVENUE STA. 145+00 TO 151+00
 BOWMAN AVENUE STA. 60+00 TO 63+50



PLAN	SURVEYED	DATE
	PLOTTED	
	CHECKED	
	RE. OF WAY CHECKED	
	STAKE FILE NAME	
	NO.	



GENERAL LEGEND:

	TEMPORARY PAVEMENT WITH AGGREGATE SHOULDER
--	--

TEMPORARY EROSION CONTROL LEGEND:

	INLET AND PIPE PROTECTION		TEMPORARY EROSION CONTROL SEEDING
	INLET FILTERS		TEMPORARY DITCH / DIVERSION CHANNEL
	TEMPORARY DITCH CHECKS		SLOPE DRAIN
			PERIMETER EROSION BARRIER

REVISIONS

NAME	DATE

CITY OF DANVILLE, ILLINOIS
WINTER AVENUE RECONSTRUCTION
 TEMPORARY EROSION CONTROL PLAN
 STAGE 3
 WINTER AVENUE
 STA. 145+00 TO STA. 151+00
 BOWMAN AVENUE
 STA. 60+00 TO STA. 63+50
 SCALE: 1" = 20'
 DATE: 12/21/06
 DRAWN BY: MLS
 CHECKED BY: MBF