


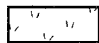



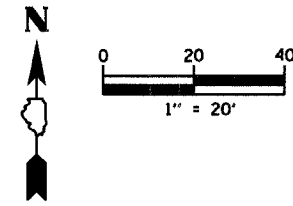


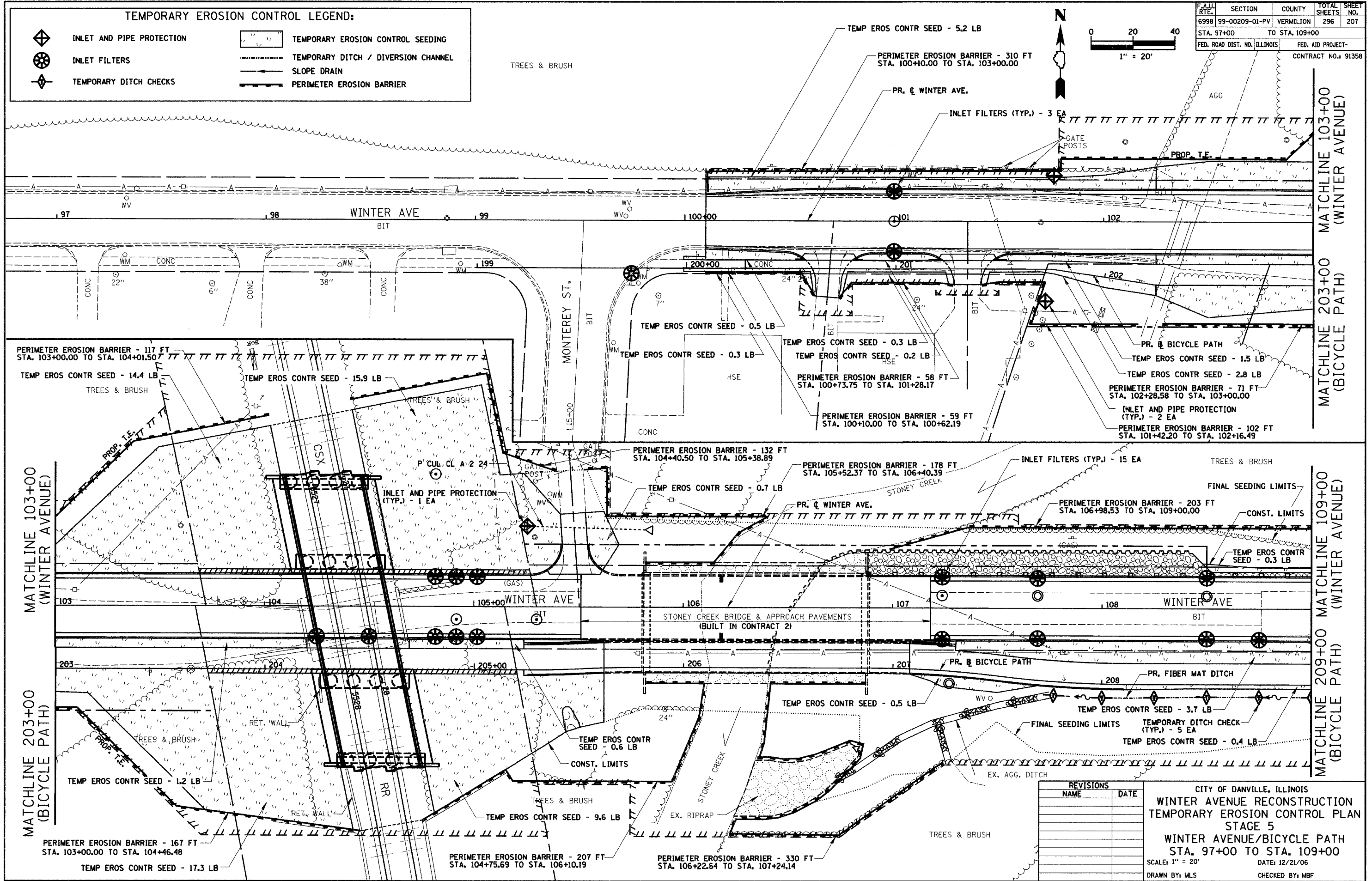
**TEMPORARY EROSION CONTROL LEGEND:**

-  INLET AND PIPE PROTECTION
-  INLET FILTERS
-  TEMPORARY DITCH CHECKS
-  TEMPORARY EROSION CONTROL SEEDING
-  TEMPORARY DITCH / DIVERSION CHANNEL
-  SLOPE DRAIN
-  PERIMETER EROSION BARRIER

F.A.U. RTE.	SECTION	COUNTY	TOTAL SHEETS	SHEET NO.
6998	99-00209-01-PV	VERMILION	296	207
STA. 97+00	TO STA. 109+00			
FED. ROAD DIST. NO.	ILLINOIS	FED. AID PROJECT-		CONTRACT NO.: 91358



PLAN	DATE
SURVEYED	
DESIGNED	
CHECKED	
BY	
NO. OF WAYS CHECKED	
CADD FILE NAME	



REVISIONS	
NAME	DATE

CITY OF DANVILLE, ILLINOIS  
**WINTER AVENUE RECONSTRUCTION**  
**TEMPORARY EROSION CONTROL PLAN**  
**STAGE 5**  
**WINTER AVENUE/BICYCLE PATH**  
**STA. 97+00 TO STA. 109+00**  
 SCALE: 1" = 20'  
 DATE: 12/21/06  
 DRAWN BY: MLS  
 CHECKED BY: MBF