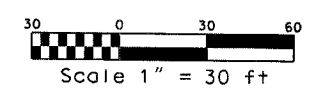
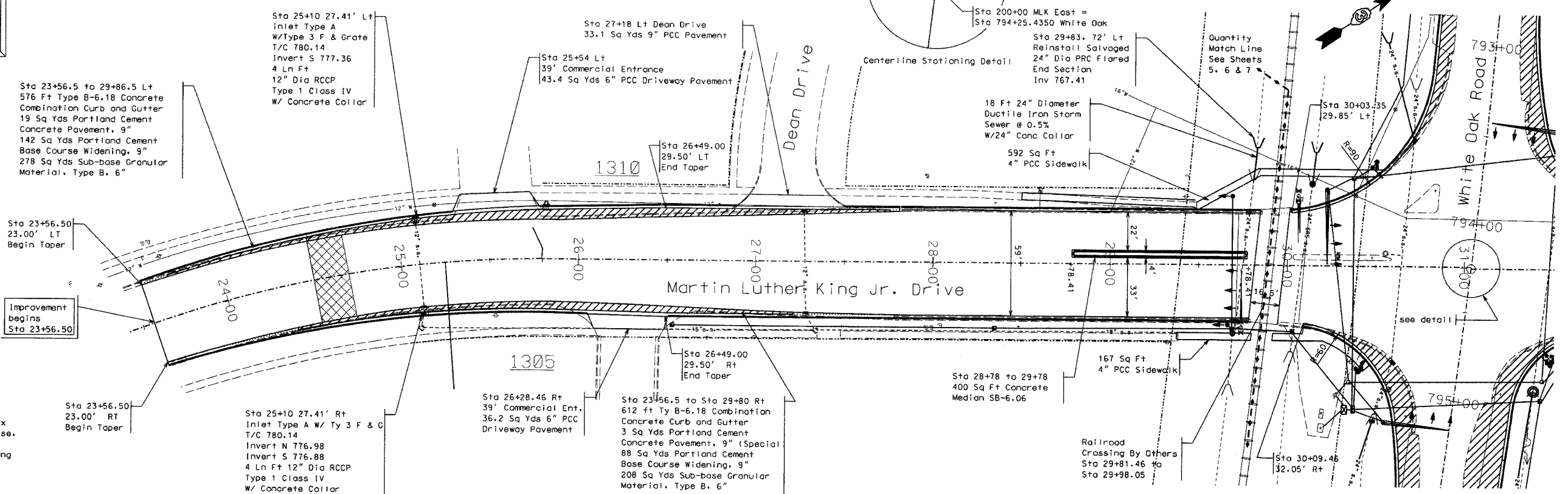
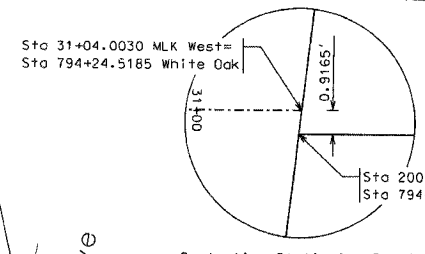


SECTION	COUNTY	TOTAL SHEETS	SHEET NO.
6385 96-00306-00-SP	McLean	30	8
STA. 23+56.50 TO STA. 31+04.00			
FED. ROAD DIST. NO.	KLMS	FED. AID PROJECT	



**Martin Luther King Jr. Centerline Curve Data**

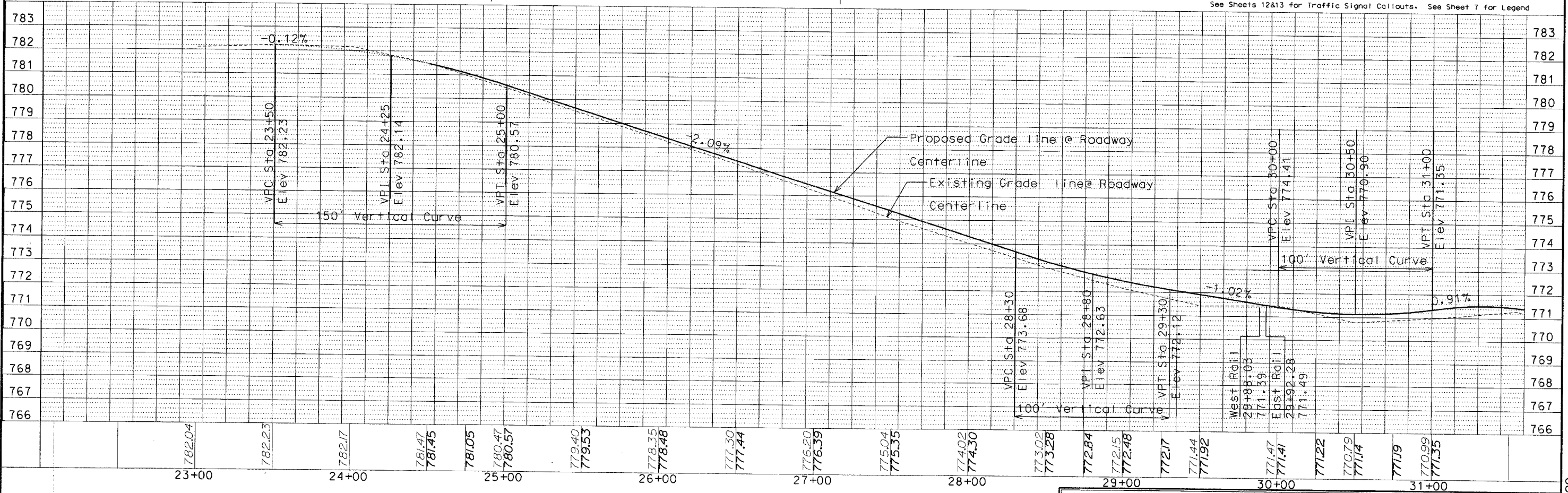
PC Sta 23+40.50  
 PI Sta 24+61.16  
 PT Sta 25+79.30  
 I = 20° 8' 29.76"  
 R = 676.06  
 T = 120.66



Sta 24+50.00 to Sta 29+81.46  
 377.5 Tons Polymerized Hot-Mix Asphalt Concrete Surface Course, Mix D, N70, 2"  
 167.9 Tons Polymerized Leveling Binder (Machine Method) N70  
 1063 Foot Strip Reflective Crack Control Treatment

Improvement begins Sta 23+56.50

See Sheets 12&13 for Traffic Signal Callouts. See Sheet 7 for Legend



**Lewis, Yockey & Brown, Inc.**  
 Consulting Engineers & Land Surveyors

603 North Main Street, 222 East Center Street, 155 South Elm Street  
 Bloomington, Illinois LaSalle, Illinois St. Louis, Illinois  
 Ph. (309) 829-2552 Ph. (309) 362-8151 Ph. (309) 527-2552

DATE: 6-27-06  
 DRAWN BY: EFD  
 CHECKED BY: EFD  
 APPR. BY: LDY

MLK and WHITE OAK RD.  
 Intersection Improvements  
 West Martin Luther King Jr. Drive  
 Plan and Profile

Sheet 8 of 30

4018.63