

F.A.U. RTE.	SECTION	COUNTY	TOTAL SHEETS	SHEET NO.
8183	04-00120-00-FP	MORGAN	28	14
STA. 486+50		TO STA. 492+50		
FED. ROAD DIST. NO.	ILLINOIS	FED. AID PROJECT		

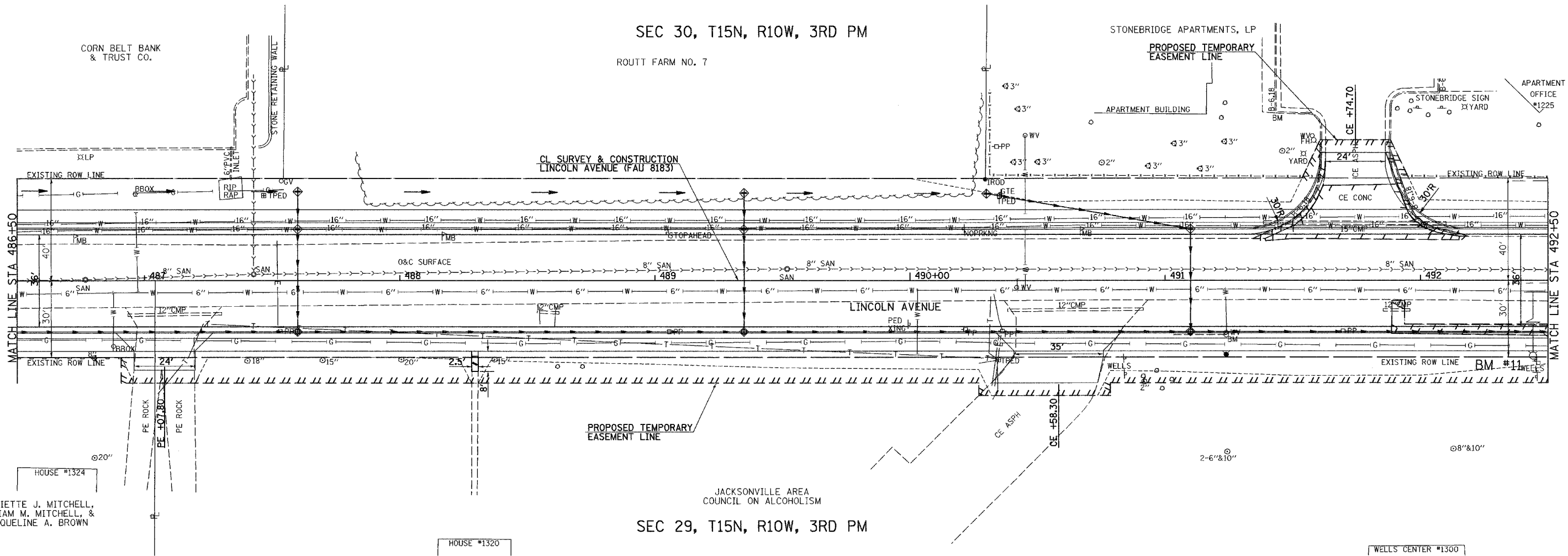
SEC 30, T15N, R10W, 3RD PM

ROUTT FARM NO. 7

STONEBRIDGE APARTMENTS, LP

PROPOSED TEMPORARY EASEMENT LINE

APARTMENT OFFICE #1225



LEGEND FOR STORM WATER POLLUTION PREVENTION PLAN

ITEM	SYMBOL
TEMPORARY DITCH CHECKS (HAY OR STRAW BALE DITCH CHECKS OR APPROVED SUBSTITUTION)	
INLET PIPE PROTECTION (I&PP) (HAY OR STRAW BALE DITCH CHECKS OR APPROVED SUBSTITUTION)	
PERIMETER EROSION BARRIER	

GENERAL NOTES:

ALL ITEMS SHALL BE CONSTRUCTED AS SHOWN ON THIS SHEET, ON STANDARD 28000L, AND AS DIRECTED BY THE ENGINEER.

THE CONTRACTOR SHALL INSTALL DITCH CHECKS AS DIRECTED BY THE ENGINEER. IN THE ENGINEER ELECTS TO UTILIZE FLUSH RIPRAP DITCH CHECKS IN LIEU OF TEMPORARY DITCH CHECKS AS SHOWN, THE SPACING SHOULD BE DOUBLED.



REVISIONS	
NAME	DATE

ILLINOIS DEPARTMENT OF TRANSPORTATION

LINCOLN AVENUE
EROSION CONTROL PLAN

SCALE:
DATE 1/12/2007

DRAWN BY JCW
CHECKED BY JRB