

**INDEX OF SHEETS**

- 1 COVER SHEET
- 2 GENERAL NOTES, LEGEND, SUMMARY OF QUANTITIES
- 3-5 TYPICAL SECTIONS
- 6 SCHEDULES OF QUANTITIES
- 7-13 ROADWAY PLAN & PROFILES
- 14-16 INTERSECTION DETAILS
- 17-18 SPECIAL DETAILS
- 19 CROSS SECTIONS

**STATE OF ILLINOIS  
DEPARTMENT OF TRANSPORTATION  
DIVISION OF HIGHWAYS**

**PLANS FOR PROPOSED  
SURFACE TRANSPORTATION /RURAL PROGRAM (W/TARP)**

**FAS ROUTE 461 & 567  
SECTION NO. 04-00001-03-RS  
PROJECT NO. CR-461(117)  
MASON COUNTY  
COUNTY HIGHWAY 4  
JOB NO. C-96-204-07**

F.A.S. R.T.E.	SECTION	COUNTY	TOTAL SHEETS	SHEET NO.
461	04-00001-03-RS	MASON	19	1
FED. ROAD DIST. NO.		ILLINOIS FED. AID PROJECT		

**CONTRACT NO. 93432**

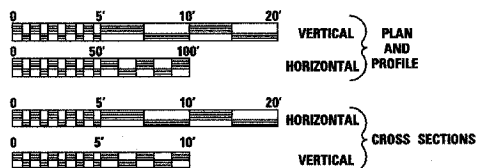
**DESCRIPTION OF WORK**

THIS PROJECT CONSISTS OF HOT-MIX ASPHALT RESURFACING TO UPGRADE COUNTY HIGHWAY 4 FOR 80,000 LB TRUCK TRAFFIC. THE RURAL SECTION OF EXISTING COUNTY HIGHWAY 4 PAVEMENT WILL BE RECYCLED TO A DEPTH OF 3" OR 4" AND RESURFACED WITH 3" OF HOT-MIX ASPHALT. THE ROADWAY CROWN SHALL BE CORRECTED DURING PAVING OPERATIONS. AGGREGATE WEDGE SHOULDERS WILL BE PROVIDED. ALSO INCLUDED WILL BE HOT MIX ASPHALT OR AGGREGATE APRONS AT SIDEROADS AND ENTRANCES, AND PAVEMENT MARKING. THE URBAN SECTION OF COUNTY HIGHWAY 4 WILL BE RECONSTRUCTED WITH 8" OF PCC PAVEMENT FROM THE ILLINOIS AND MIDLAND RAILROAD TO THE INTERSECTION WITH COUNTY HIGHWAY 20 AND RESURFACED WITH 3" OF HOT-MIX ASPHALT FROM THE INTERSECTION OF COUNTY HIGHWAY 20 TO THE EASTERLY LIMITS OF THE PROJECT. COUNTY HIGHWAY 20 WILL BE RESURFACED WITH 3" OF HOT-MIX ASPHALT.

**REQUIRED STANDARDS**

- 000001-04 STANDARD SYMBOLS, ABBREVIATIONS, AND PATTERNS
- 280001-03 TEMPORARY EROSION CONTROL SYSTEMS
- 420001-06 PAVEMENT JOINTS
- 420701-01 PAVEMENT FABRIC
- 442201-02 CLASS C AND D PATCHES
- 606001-03 CONCRETE CURB TYPE B AND COMBINATION CONCRETE CURB AND GUTTER
- 701006-02 OFF-RD OPERATIONS 2L, 2W, 15' TO 24" FROM PAVEMENT EDGE
- 701011-01 OFF-RD MOVING OPERATIONS 2L, 2W DAY ONLY
- 701306-01 LANE CLOSURE 2L, 2W SLOW MOVING OPERATIONS - DAY ONLY FOR SPEEDS ≥ 45MPH
- 701311-02 LANE CLOSURE 2L, 2W MOVING OPERATIONS - DAY ONLY
- 701326-02 LANE CLOSURE 2L, 2W, PAVEMENT WIDENING, FOR SPEEDS ≥ 45 MPH
- 701501-03 URBAN LANE CLOSURE, 2L, 2W, UNDIVIDED
- 702001-06 TRAFFIC CONTROL DEVICES
- 780001-01 TYPICAL PAVEMENT MARKINGS
- BLR 24-1 MAILBOX TURNOUTS

- GAS & ELECTRIC
- MENARD ELECTRIC COOP
- AMEREN CIPS
- TELEPHONE
- GALLATIN RIVER COMMUNICATIONS
- CASS TELEPHONE & CABLE
- CASS COUNTY TELEPHONE
- CABLE T.V.
- CASS TELEPHONE & CABLE
- WATER & SEWER
- VILLAGE OF FOREST CITY



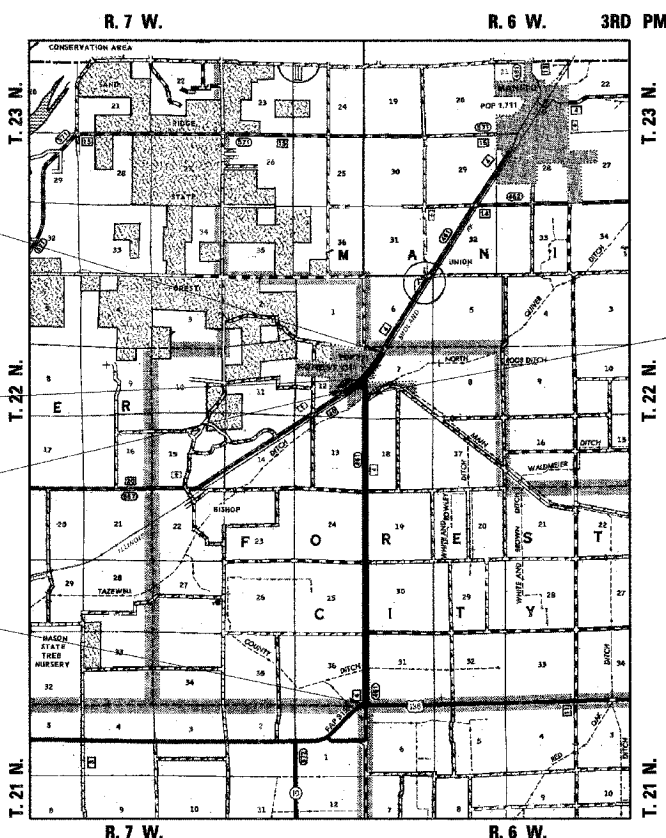
FULL SIZE PLANS HAVE BEEN PREPARED USING STANDARD ENGINEERING SCALES, REDUCED SIZE PLANS WILL NOT CONFORM TO STANDARD SCALES, IN MAKING MEASUREMENTS ON REDUCED PLANS, THE ABOVE SCALES MAY BE USED.

**J.U.L.I.E.**  
JOINT UTILITY LOCATION INFORMATION FOR EXCAVATION  
1-800-892-0123

DESIGN DESIGNATION ADT (2026):  
FAS 461 & FAS 567 CH 4: 715  
RURAL COLLECTOR CH 20: 3025  
% PV = 85  
% SU = 7  
% MU = 8

**3R GUIDELINES**

CONTRACT No. 93432

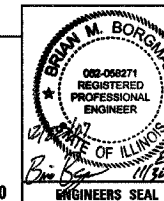


APPROXIMATE GRAPHIC SCALE IN FEET

TOTAL LENGTH OF PROJECT = 26,054.74 FEET = 4.935 MILES  
NET LENGTH OF PROJECT = 25,940.74 FEET = 4.913 MILES

HUTCHISON ENGINEERING, INC  
CONSULTING ENGINEERS  
JACKSONVILLE, ILLINOIS

2006 JOB NO 2420



APPROVED	<i>Jan 22</i>	20 07
	<i>Mark R. Pidge</i>	COUNTY ENGINEER
PASSED	<i>JAN 25</i>	20 07
	<i>Tommy Ford</i>	DISTRICT SIX ENGINEER OF LOCAL ROADS & STREETS
PASSED	<i>1/29/07</i>	20 07
	<i>Sh. Fleh</i>	DISTRICT SIX ENGINEER OF CONSTRUCTION
Releasing For Bid Based on Limited Review	<i>JAN 25</i>	20 07
	<i>Christine M. Reed</i>	DEPUTY DIRECTOR OF HIGHWAYS, REGION FOUR ENGINEER
STATE OF ILLINOIS DEPARTMENT OF TRANSPORTATION		