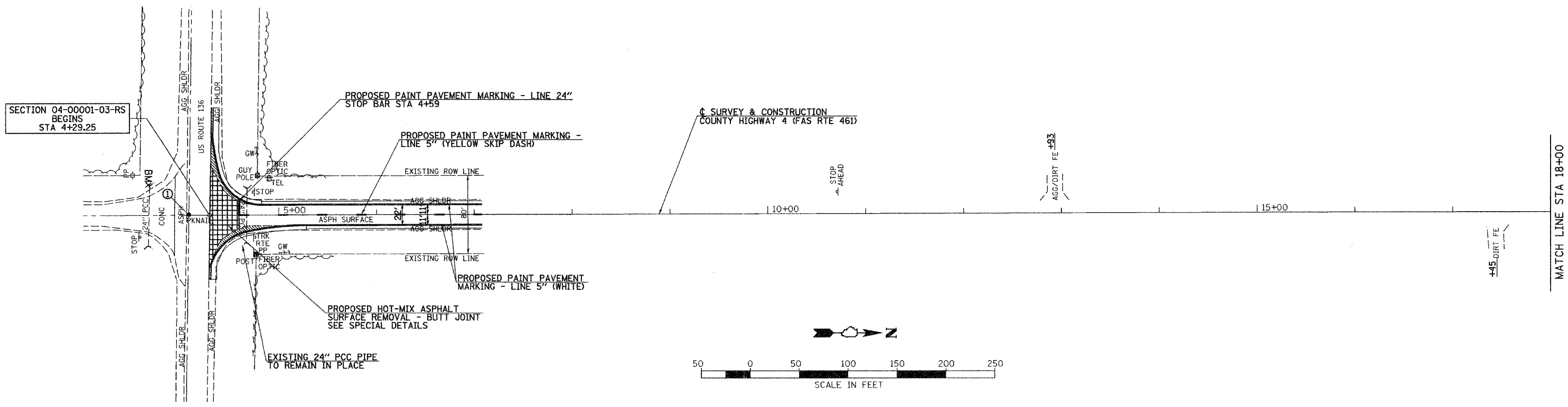


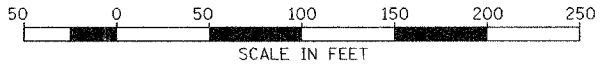
F.A.S. RTE.	SECTION	COUNTY	TOTAL SHEETS	SHEET NO.
461	04-00001-03-RS	MASON	19	7
STA. 4+29.3		TO STA. 18+00		
FED. ROAD DIST. NO.		ILLINOIS	FED. AID PROJECT	

**CONTRACT NO. 93432**



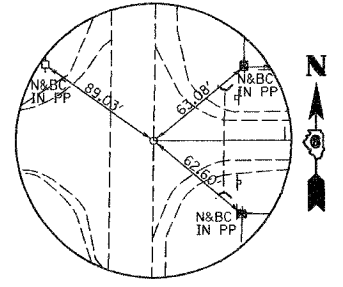
SECTION 04-00001-03-RS  
BEGINS  
STA 4+29.25

☉ SURVEY & CONSTRUCTION  
COUNTY HIGHWAY 4 (FAS RTE 461)

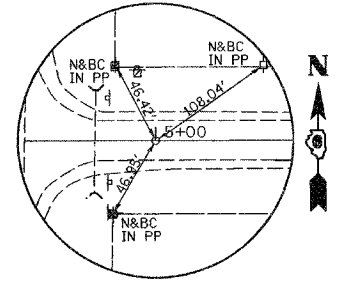


**BENCHMARKS**  
CHIS. "□" ON SE CORNER OF CONCRETE HEADWALL  
⊙ SW QUADRANT OF RTE 136 & CH 4  
ELEV 499.15

① SE COR, SE 1/4, SEC 36, T22N, R7W, 3RD PM  
N - 1324538.56 E - 2390895.99  
STA 4+07.96



POT STA 4+29.25  
N - 1324559.85 E - 2390896.71  
MAG NAIL



POT STA 5+00.00  
N - 1324630.60 E - 2390896.53  
MAG NAIL

REVISIONS	
NAME	DATE

ILLINOIS DEPARTMENT OF TRANSPORTATION

COUNTY HIGHWAY 4 (FAS 461)  
STA 4+29.3 TO STA 18+00

SCALE:  
DATE: 11-22-06

DRAWN BY TJD  
CHECKED BY AWM