

- BENCHMARKS**
- #2 CHIS. "□" ON FLAG POLE BASE, IN FRONT OF FOREMAN FIRE DEPT, FOREST CITY, IL ELEV 495.37
 - #4 CHIS. "X" N.W. FLANGE BOLT OF FIRE HYD @ S.S.W QUAD OF MAIN STREET AND WILLOW ELEV 495.30

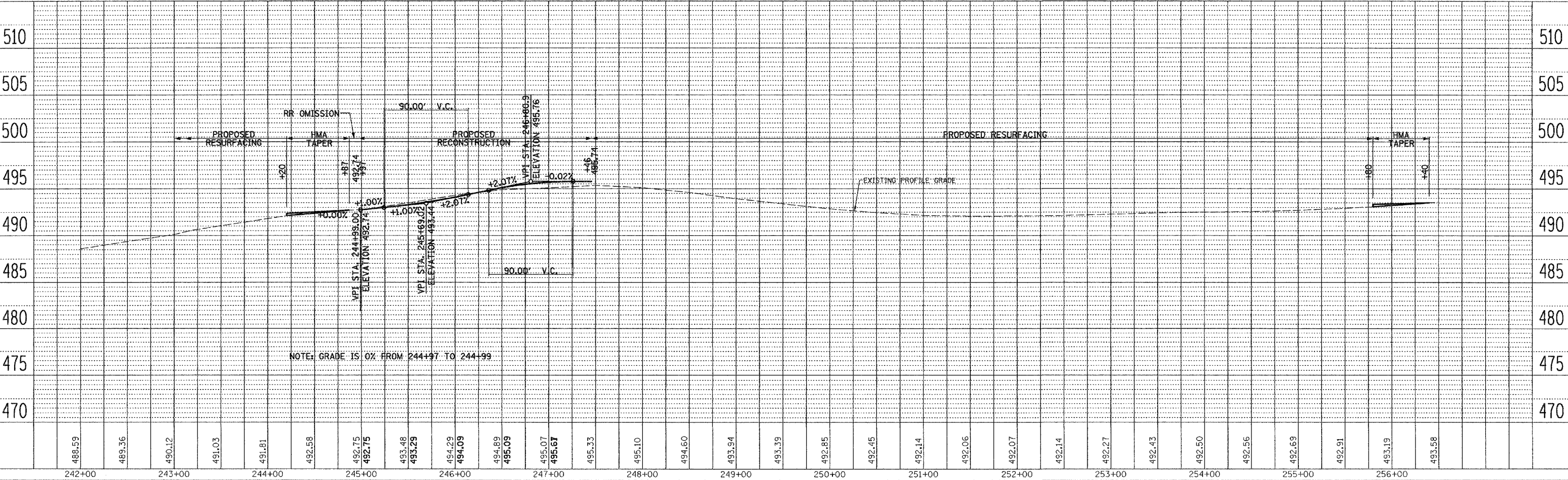
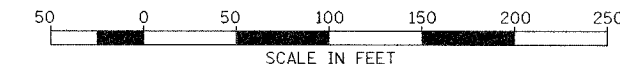
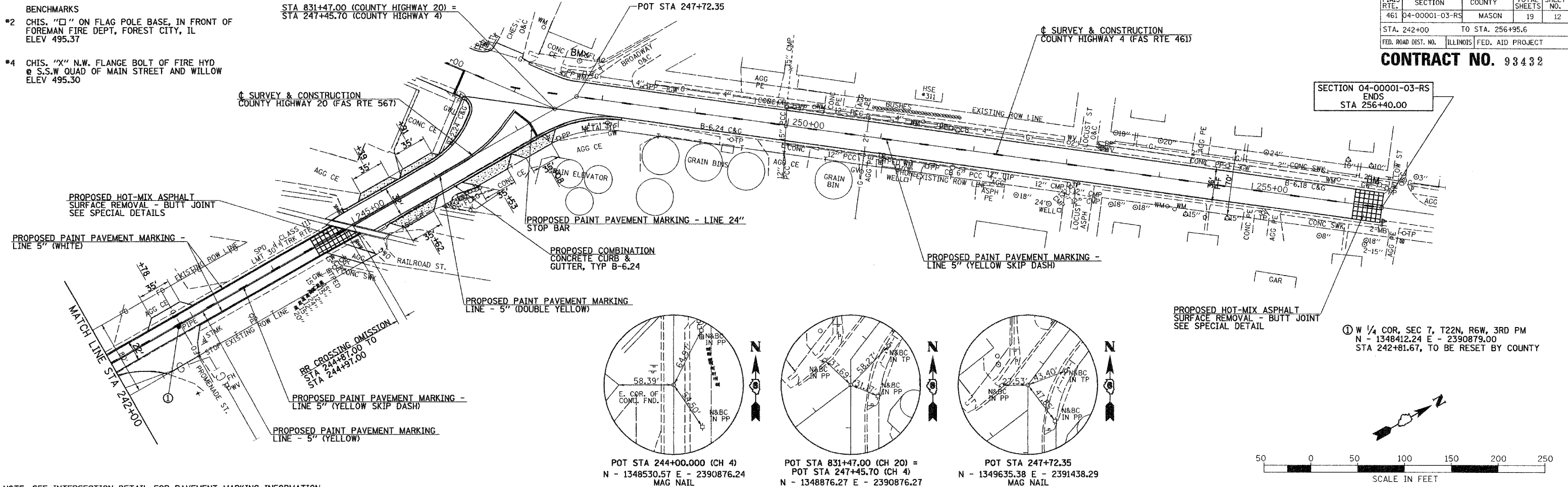
STA 831+47.00 (COUNTY HIGHWAY 20) =
 STA 247+45.70 (COUNTY HIGHWAY 4)

F.A.S. RTE.	SECTION	COUNTY	TOTAL SHEETS	SHEET NO.
461	04-00001-03-RS	MASON	19	12

STA. 242+00 TO STA. 256+95.6
 FED. ROAD DIST. NO. ILLINOIS FED. AID PROJECT

CONTRACT NO. 93432

SECTION 04-00001-03-RS
 ENDS
 STA 256+40.00



COUNTY HIGHWAY 4 (FAS 461) PLAN & PROFILE, STA 242+00 TO STA 256+40.0

DATE	BY	REVISION

DATE	BY	REVISION