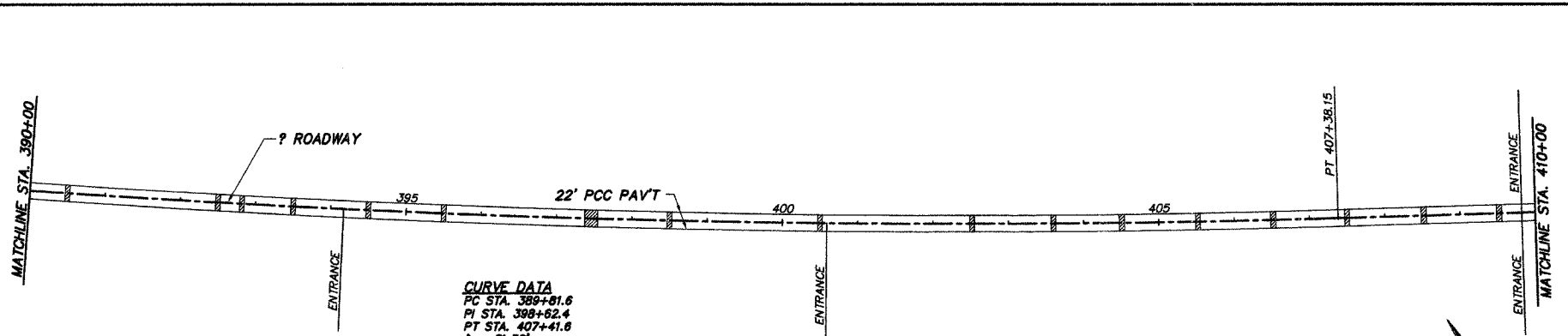
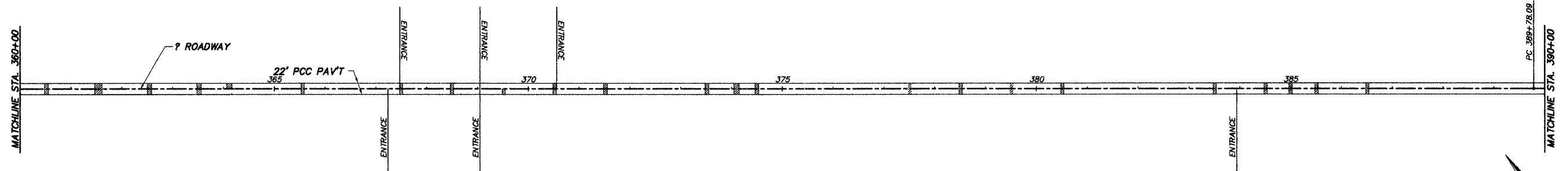
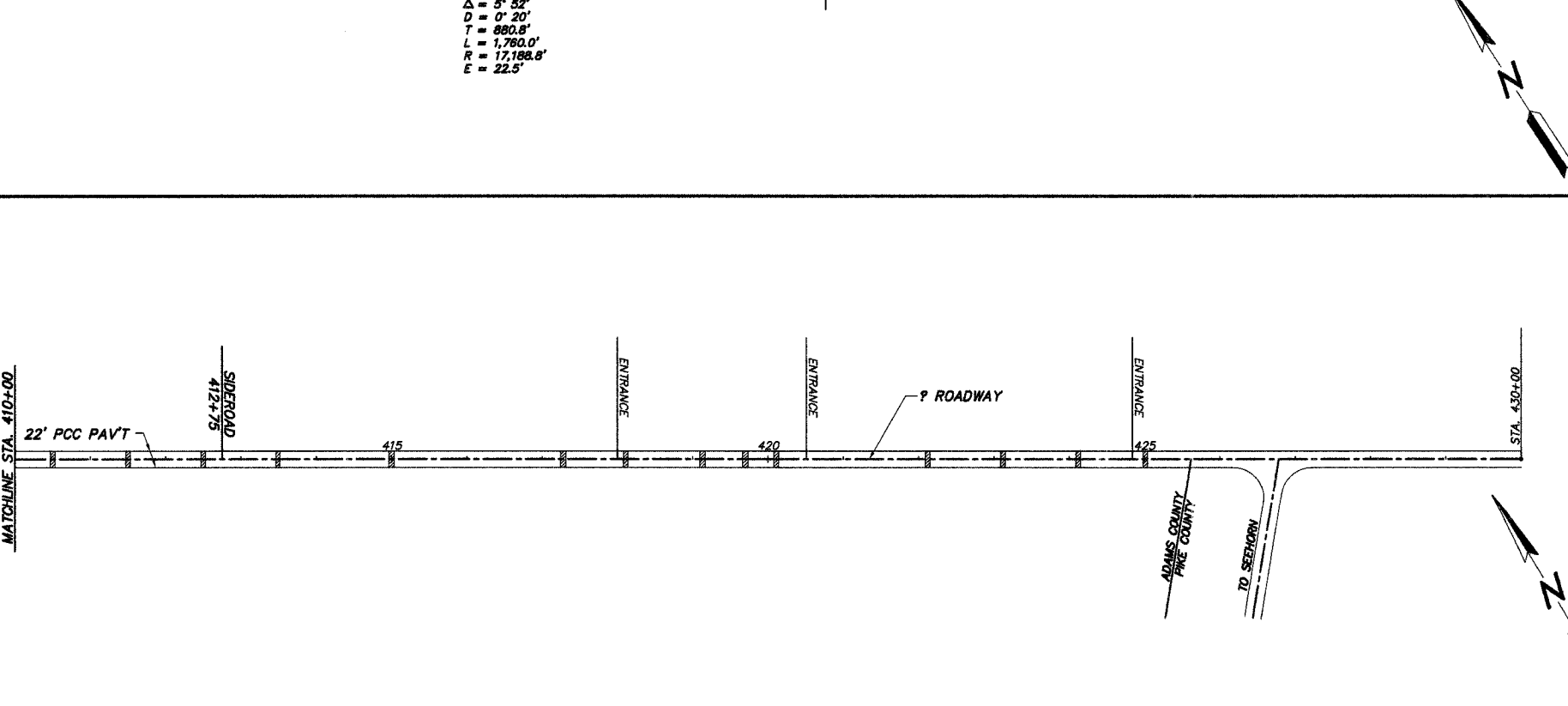


COUNTY	ROUTE	SECTION	TOTAL SHEETS	SHEET NO.
ADAMS	FAS 2599	06-00189-00-RS	13	12
STA. 74+00 TO STA. 380+00				
PROJECT NO. RS-2599(103)				



STA.	LENGTH	LEFT ?				RIGHT ?				
		TYPE I	TYPE II	TYPE III	TYPE IV	LENGTH	TYPE I	TYPE II	TYPE III	TYPE IV
360+52	5		6.1			5		6.1		
361+54	15*			18.3		15*			18.3	
362+54	5		6.1			5		6.1		
363+52	7.5		9.2			7.5		9.2		
364+10	10		12.2							
365+73						5		6.1		
367+50	4	4.9				4	4.9			
368+50	6		7.3			6		7.3		
369+52						6		7.3		
370+52	4	4.9				4	4.9			
371+52	6		7.3			6		7.3		
373+51	6		7.3			6		7.3		
374+10	6		7.3			6		7.3		
374+50	10		12.2			10		12.2		
378+51	5		6.1			5		6.1		
380+51	5		6.1			5		6.1		
383+50	5		6.1			5		6.1		
384+52	5		6.1			5		6.1		
385+00	5		6.1			5		6.1		
385+52	5		6.1			5		6.1		
386+50	5		6.1			5		6.1		
390+50	4	4.9								
392+50	5		6.1			5		6.1		
392+76	3	3.7								
393+50	3	3.7				3	3.7			
394+50	4	4.9				4	4.9			
395+50	5		6.1			5		6.1		
397+46	15*			18.3		15*			18.3	
398+50	4	4.9				4	4.9			
400+50	5		6.1			5		6.1		
402+50	5		6.1			5		6.1		
403+60	6		7.3			6		7.3		
404+51	6		7.3			6		7.3		
405+52	6		7.3			6		7.3		
406+52	6		7.3			6		7.3		
407+50	5		6.1			5		6.1		
408+52	5		6.1			5		6.1		
409+51	5		6.1			5		6.1		
410+50	6		7.3							
411+50	4	4.9								
412+44	5		6.1			5		6.1		
413+49	6		7.3			6		7.3		
415+00	7		8.6			7		8.6		
417+28	5		6.1			5		6.1		
418+11	5		6.1			5		6.1		
419+13	5		6.1			5		6.1		
419+70	6		7.3			6		7.3		
420+11	4	4.9								
422+12	5		6.1			5		6.1		
423+11	5		6.1			5		6.1		
424+11	5		6.1			5		6.1		
425+00	6		7.3			6		7.3		



*- LONGITUDINAL JOINT TIE BARS ARE REQUIRED FOR THESE PATCHES AS DETAILED ON STANDARD 420001.
 LENGTH = AVERAGE LENGTH OF PATCH MEASURED PARALLEL TO THE CENTERLINE OF THE ROADWAY.

SUMMARY OF QUANTITIES (THIS SHEET)

CLASS C PATCHES, TYPE I, 9 INCH	SQ YD	65.0
CLASS C PATCHES, TYPE II, 9 INCH	SQ YD	534.1
CLASS C PATCHES, TYPE III, 9 INCH	SQ YD	73.2
SAW CUTS	FOOT	2,112