

93434

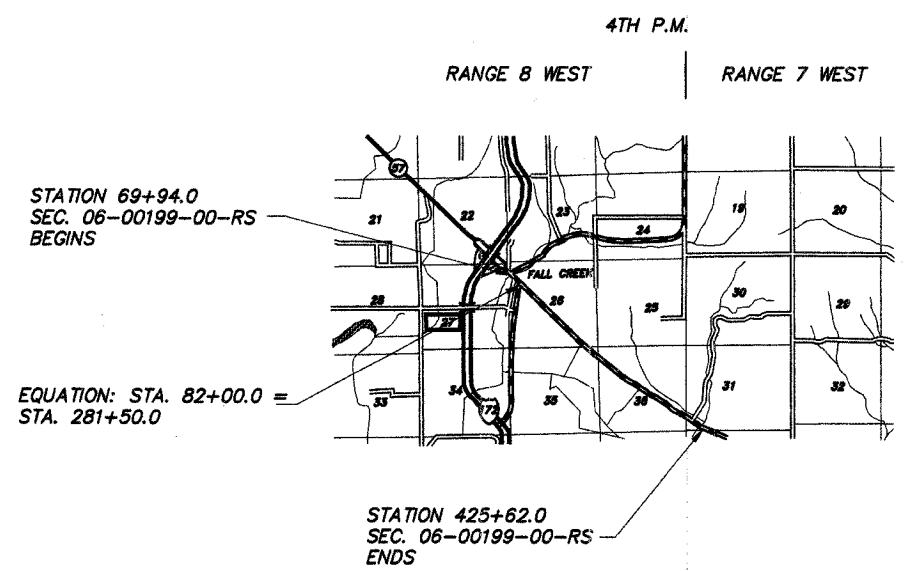
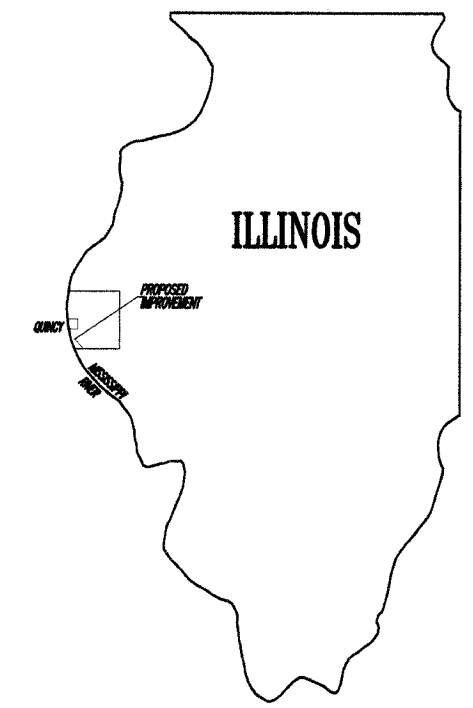
COUNTY	ROUTE	SECTION	TOTAL SHEETS	SHEET NO.
ADAMS	FAS 2599	06-00199-00-RS	13	1

STATE OF ILLINOIS
DEPARTMENT OF TRANSPORTATION
DIVISION OF HIGHWAYS
PLANS FOR PROPOSED
SURFACE TRANSPORTATION/RURAL PROGRAM
LOCAL AGENCY PAVEMENT PRESERVATION

FAS 2599 (C.H. 57) SECTION 06-00199-00-RS ADAMS COUNTY
PROJECT NO. ACRS-2599(103) JOB NO. C-96-227-06

INDEX OF SHEETS:

SHEET NO.	SHEET
1	TITLE SHEET
2	SUMMARY OF QUANTITIES
	GENERAL NOTES
3	TYPICAL CROSS SECTIONS
4	TRAFFIC CONTROL PLAN - PATCHING
5-10	PLAN SHEETS
11-12	PATCH LOCATIONS
13	SIDE ROAD & ENTRANCE DETAILS
	BITUMINOUS SURFACE REMOVAL
	BUTT JOINT DETAIL
	STANDARD 420001-06
	STANDARD 442201-02
	STANDARD 701006-02
	STANDARD 701201-02
	STANDARD 701301-02
	STANDARD 701306-01
	STANDARD 702001-06
	STANDARD BLR 22-4
	STANDARD BLR 24-1



LOCATION MAP

FUNCTIONAL CLASS: MAJOR COLLECTOR (NON-URBAN)
ADT=600

PROPOSED IMPROVEMENT CONSISTS OF PLACING 1 1/2" POLYMERIZED BITUMINOUS CONCRETE SURFACE COURSE, SUPERPAVE, MIX "C", N50 ON THE EXISTING 22' ROADWAY WITH OTHER MISCELLANEOUS CONSTRUCTION

UTILITIES:
J.U.L.I.E. _____ 1-800-892-0123
AMERITECH _____ QUINCY, IL
ADAMS RURAL ELECTRICAL CO-OP _____ CAMP POINT, IL

GROSS LENGTH:
STA. 69+94.00 TO STA. 82+00.00 = 1,206.00 FT.
STA. 281+50.00 TO STA. 425+62.00 = 14,412.00 FT.
NET LENGTH TO BE IMPROVED: 15,618.00 FT. = 2.958 MILES

THESE PLANS WERE PREPARED BY ME OR BY A FULL-TIME MEMBER OF MY STAFF WORKING UNDER MY PERSONAL SUPERVISION.

SUBMITTED BY *Rick A. Lange* DATE 1-11-07
COUNTY ENGINEER
LICENSE NO. 062-032961
LIC. EXPIRES 11/30/2007

APPROVED	January 11, 2007
	<u><i>Rick A. Lange</i></u> COUNTY ENGINEER
PASSED	FEB. 22 ND , 2007
	<u><i>John Bludus</i></u> DISTRICT ENGINEER OF CONSTRUCTION
PASSED	FEB 22, 2007
	<u><i>John F. J.</i></u> DISTRICT ENGINEER OF LOCAL ROADS AND STREETS
RELEASING FOR BID BASED ON LIMITED REVIEW	FEB 22, 2007
	<u><i>Christine M. Reed</i></u> THE DEPUTY DIRECTOR OF HIGHWAYS REGION FOUR ENGINEER

**STATE OF ILLINOIS
DEPARTMENT OF TRANSPORTATION**

CONTRACT NO. 93434

GENERAL NOTES

COUNTY	ROUTE	SECTION	TOTAL SHEETS	SHEET NO.
ADAMS	FAS 2599	06-00199-00-RS	13	2

SUMMARY OF QUANTITIES - GENERAL NOTES

PROJECT NO. RS-2599(103)

- WHERE SECTION OR SUB-SECTION STONES, USGS BENCH MARK MONUMENTS, AND U.S. ARMY CORPS OF ENGINEERS SURVEY MARKERS ARE ENCOUNTERED, THE ENGINEER SHALL BE NOTIFIED BEFORE SUCH STONES AND MONUMENTS ARE REMOVED. THE CONTRACTOR SHALL PROTECT AND CAREFULLY PRESERVE ALL PROPERTY MARKS UNTIL AN OWNER, AN AUTHORIZED SURVEYOR OR THEIR REPRESENTATIVE HAS WITNESSED OR OTHERWISE REFERENCED THE PROPERTY MARKS LOCATION.
- ALL PRIVATELY OWNED UTILITIES, UNLESS OTHERWISE SPECIFIED, WILL BE MOVED BY THEIR RESPECTIVE OWNERS WHERE REQUIRED. THE FOLLOWING UTILITY COMPANIES HAVE FACILITIES WITHIN THE LIMITS OF CONSTRUCTION:

AMERITECH
ADAMS RURAL ELECTRICAL CO-OP
- THE NOMINAL THICKNESS FOR THE LEVELING BINDER, SURFACE COURSES AND AGGREGATE SHOULDERS ARE SHOWN ON THE TYPICAL SECTIONS, STANDARDS, SCHEDULES OR SPECIAL DETAILS. THE CONSTRUCTED THICKNESS OF THE ABOVE ITEMS SHALL NOT BE LESS THAN 90% OF THE NOMINAL THICKNESS AT ANY LOCATION. THE THICKNESS OF BITUMINOUS MIXTURE SHOWN ON THE PLANS IS THE NOMINAL THICKNESS. DEVIATIONS FROM THE NOMINAL THICKNESS WILL BE PERMITTED WHEN SUCH DEVIATIONS OCCUR DUE TO IRREGULARITIES IN THE EXISTING SURFACE OR BASE WHICH THE BITUMINOUS MIXTURE IS PLACED.
- THE CONTRACTOR SHALL BE RESPONSIBLE FOR DETERMINING THE LOCATION AND ELEVATION OF ALL EXISTING UTILITIES AND TO NOTIFY ALL UTILITY COMPANIES PRIOR TO THE BEGINNING OF CONSTRUCTION. THIS WILL BE CONSIDERED INCIDENTAL TO THE CONTRACT.
- APPLICATION RATES SHALL BE AS FOLLOWS UNLESS OTHERWISE SPECIFIED BY THE ENGINEER:

HOT-MIX ASPHALT MIXTURES
112 LBS PER SQUARE YARD
BITUMINOUS MATERIALS (PRIME COAT)
0.05-0.10 GALLON PER SQUARE YARD ON PCC OR BITUMINOUS CONCRETE
0.25-0.35 GALLON PER SQUARE YARD ON AGGREGATE
AGGREGATE (PRIME COAT)
4 LBS PER SQUARE YARD
- PERMANENT & TEMPORARY PAVEMENT MARKING TO BE DONE BY OTHERS. SHORT TERM PAVEMENT MARKING IS INCLUDED IN THE CONTRACT. THE REMOVAL OF THE SHORT TERM PAVEMENT MARKING TAPE WILL BE DONE BY OTHERS UPON COMPLETION OF THE PERMANENT PAVEMENT MARKING.

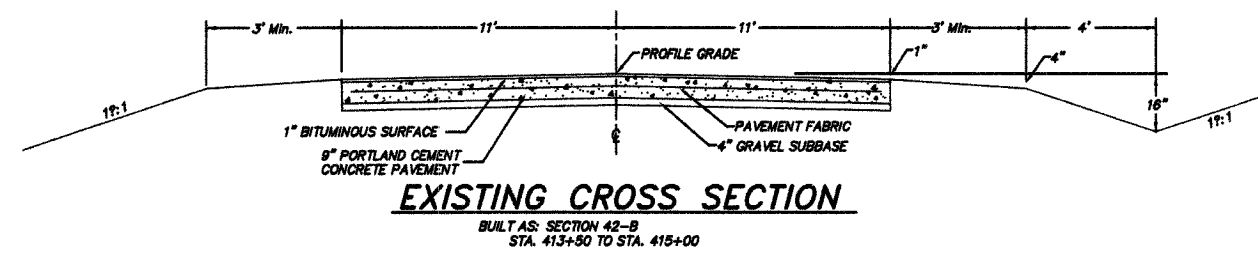
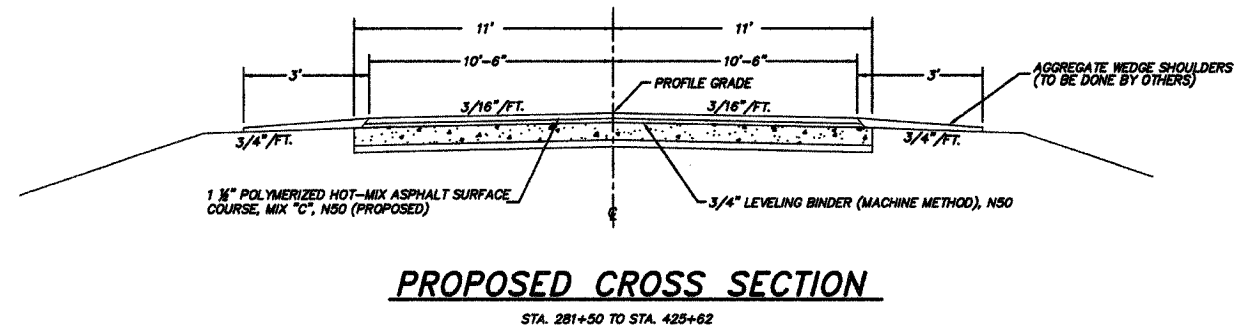
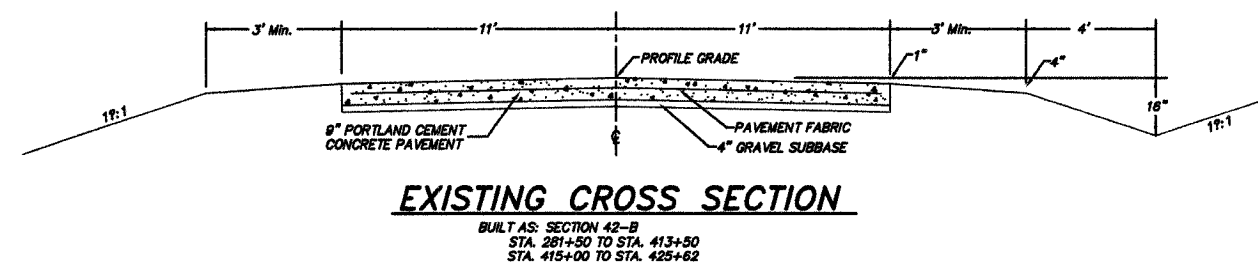
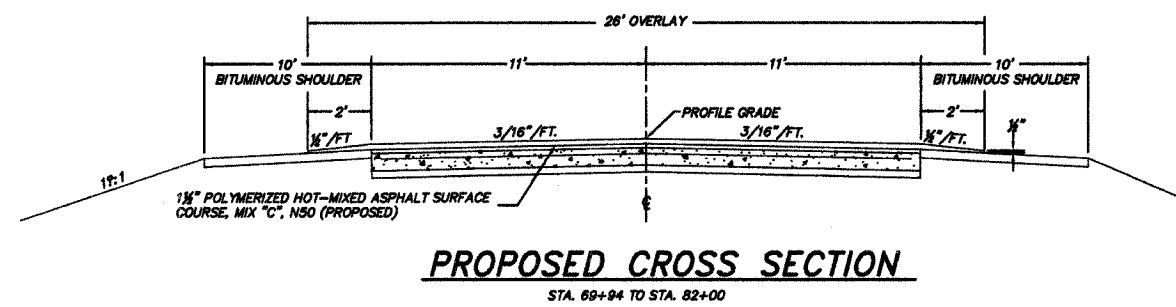
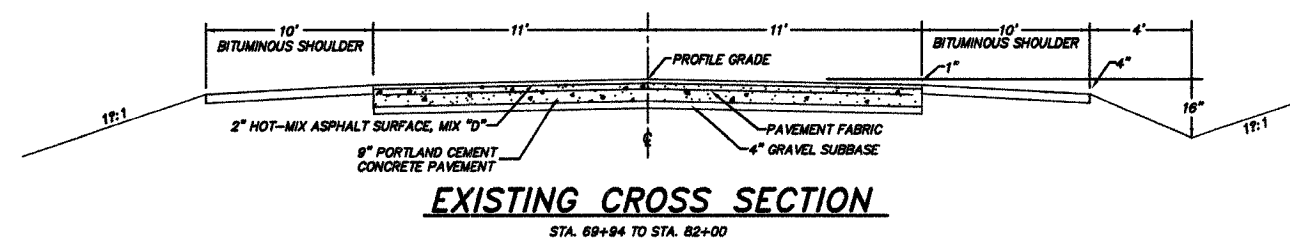
SUMMARY OF QUANTITIES

QUANTITY	UNIT	ITEM	CODE NO.	SPECIAL PROVISIONS
3,711	GALLON	BITUMINOUS MATERIALS (PRIME COAT)	40600100	*
73	TON	AGGREGATE (PRIME COAT)	40600300	
1,455	TON	LEVELING BINDER (MACHINE METHOD), N50	40600625	*
1	EACH	CONSTRUCTING TEST STRIP	40600895	
61	SQ. YD.	HOT-MIX ASPHALT SURFACE REMOVAL - BUTT JOINT	40600982	*
61	SQ. YD.	PORTLAND CEMENT CONCRETE SURFACE REMOVAL - BUTT JOINT	40600985	*
25	SQ. YD.	TEMPORARY RAMP	40600990	
34	TON	HOT-MIX ASPHALT SURFACE COURSE, MIX "C", N50	40603310	*
3,216	TON	POLYMERIZED HOT-MIX ASPHALT SURFACE COURSE, MIX "C", N50	40603510	*
424	SQ. YD.	HOT-MIX ASPHALT SURFACE REMOVAL 1"	44000153	
121.4	SQ. YD.	CLASS C PATCHES, TYPE I, 9 INCH	44201337	*
1,266.3	SQ. YD.	CLASS C PATCHES, TYPE II, 9 INCH	44201341	*
236.8	SQ. YD.	CLASS C PATCHES, TYPE III, 9 INCH	44201345	*
53.8	SQ. YD.	CLASS C PATCHES, TYPE IV, 9 INCH	44201347	*
4,400	FOOT	SAW CUTS	44213200	*
1	L. SUM	MOBILIZATION	67100100	
1	L. SUM	TRAFFIC CONTROL AND PROTECTION	70101700	*
1,420	FOOT	SHORT TERM PAVEMENT MARKING	70300100	*

CONSTRUCTION TYPE CODE: I000

COUNTY	ROUTE	SECTION	TOTAL SHEETS	SHEET NO.
ADAMS	FAS 2590	06-00199-00-RS	13	3
TYPICAL CROSS SECTIONS				
PROJECT NO. RS-2599(103)				

TYPICAL CROSS SECTIONS

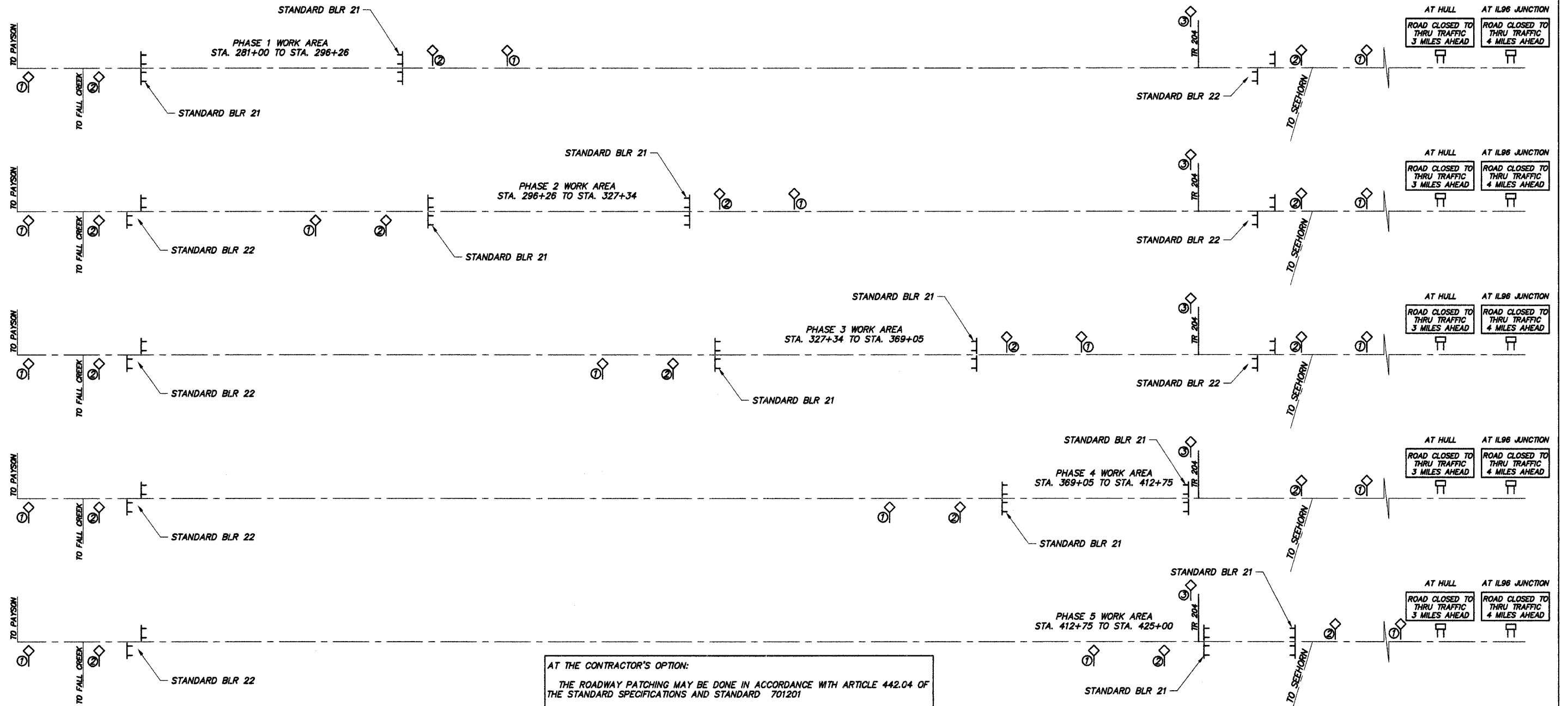


BITUMINOUS MIXTURE REQUIREMENTS

ITEM	ASPHALT GRADE	AGG. COMPOSITION	VOIDS
POLY. SURFACE	SBS PG 64-26	II-9.5 or 12.5 MIX C1	4.0% @ NSO
SURFACE	PG 58-22	II-9.5 or 12.5 MIX C1	4.0% @ NSO
LEVELING BINDER	PG 58-22	II-9.5	4.0% @ NSO

COUNTY	ROUTE	SECTION	SHT. NO.
ADAMS	FIS 2899	06-00199-00-RS	4
TRAFFIC CONTROL PLAN - PATCHING			

TRAFFIC CONTROL PLAN - PATCHING



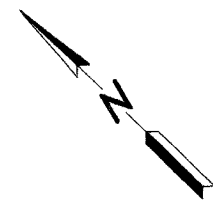
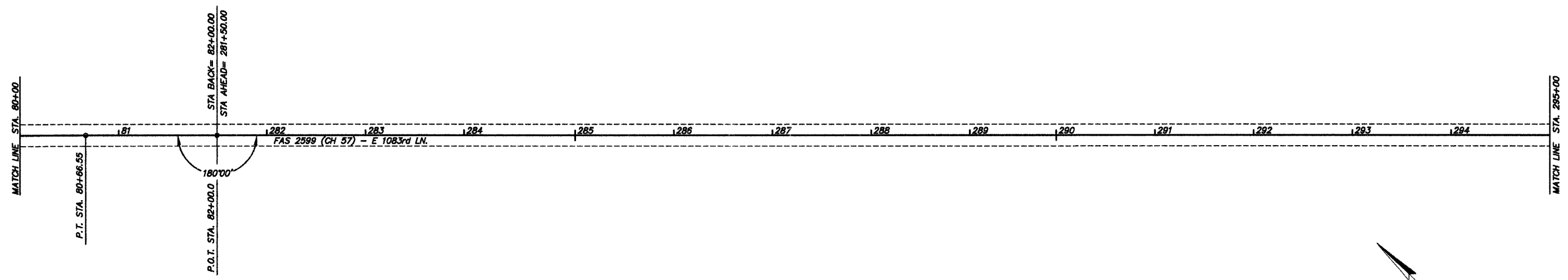
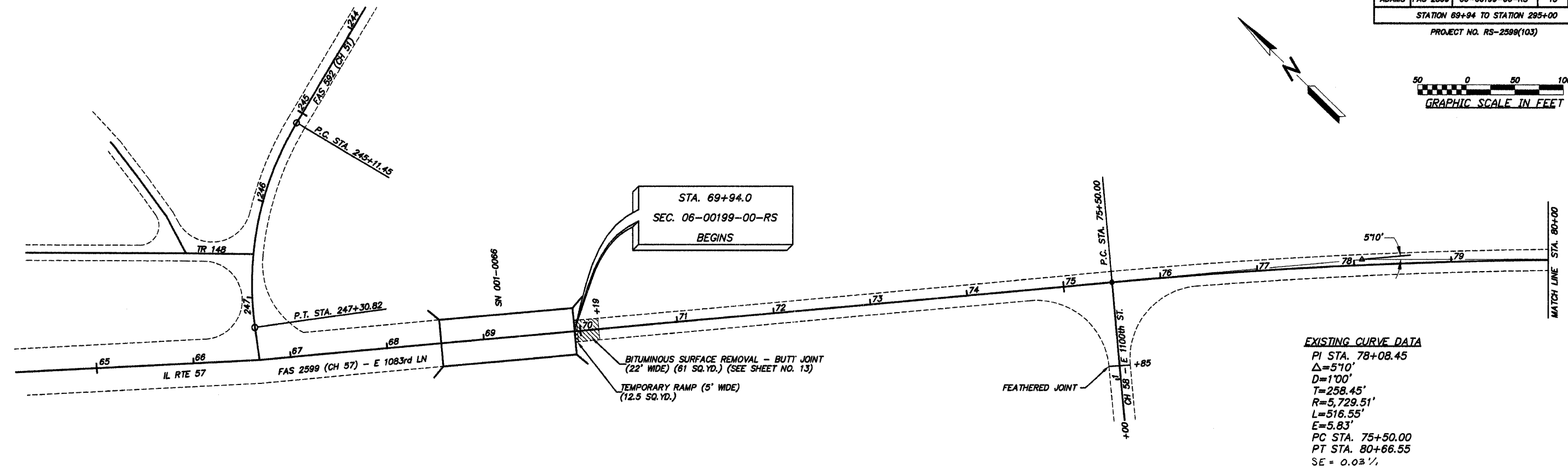
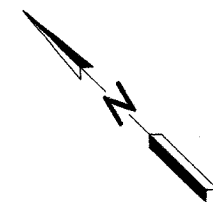
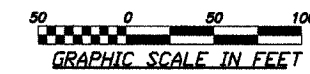
AT THE CONTRACTOR'S OPTION:
 THE ROADWAY PATCHING MAY BE DONE IN ACCORDANCE WITH ARTICLE 442.04 OF THE STANDARD SPECIFICATIONS AND STANDARD 701201
 OR
 THE ROADWAY PATCHING MAY BE DONE BY PHASE CONSTRUCTION AS DETAILED ON THIS SHEET TO PROVIDE ACCESS TO RESIDENCES ALONG THE ROADWAY.

- PHASE CONSTRUCTION NOTES:
1. CONCRETE REMOVAL AND PATCHING OPERATIONS SHALL BE CONFINED TO ONE LANE WITHIN THE LIMITS OF THE CLOSED SECTION, LEAVING THE OPPOSITE LANE OPEN TO FACILITATE THE MOVEMENT OF CONSTRUCTION TRAFFIC.
 2. IN ADDITION TO THE TRAFFIC CONTROL AND PROTECTION SHOWN ELSEWHERE, THE CONTRACTOR SHALL PLACE TWO BARRICADES OR DRUMS IMMEDIATELY IN FRONT OF EACH OPEN PATCH OR OTHER EXCAVATION WITHIN THE CLOSED LANE.
 3. THE CONTRACTOR WILL BE ALLOWED TO LEAVE OPEN HOLES WITHIN THE PAVEMENT AREA OVERNIGHT IN THE LANE BEING PATCHED WITH THE PROPER PLACEMENT OF BARRICADES OR BARRELS. ALL EXCAVATED MATERIALS SHALL BE REMOVED FROM THE PAVEMENT AND SHOULDER AREA BY NIGHTFALL OF THE DAY IT IS REMOVED.

- ROAD CLOSED AHEAD
- ROAD CLOSED AHEAD 500 FT.
- ROAD CONSTRUCTION AHEAD
- TYPE III BARRICADE W/ R11 SIGN
- R11 SIGN

COUNTY	ROUTE	SECTION	TOTAL SHEETS	SHEET NO.
ADAMS	FAS 2599	06-00199-00-RS	13	5

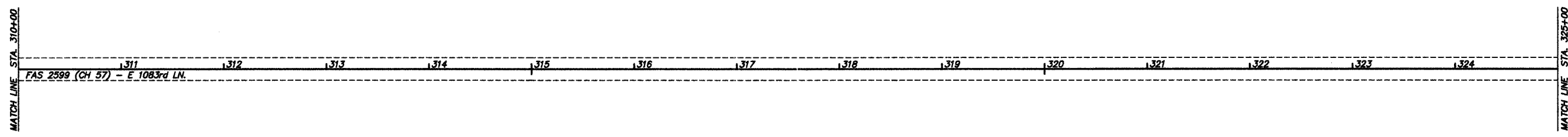
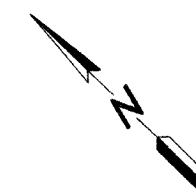
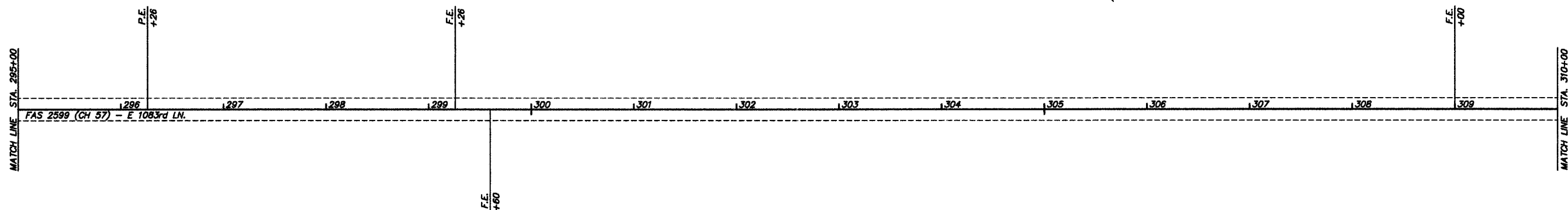
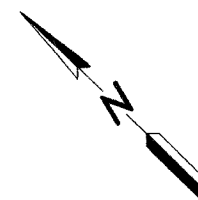
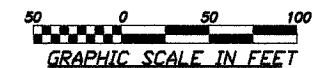
STATION 69+94 TO STATION 295+00
PROJECT NO. RS-2599(103)



COUNTY	ROUTE	SECTION	TOTAL SHEETS	SHEET NO.
ADAMS	FAS 2599	06-00189-00-RS	13	6

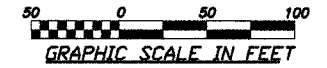
STATION 295+00 TO STATION 325+00

PROJECT NO. RS-2599(103)



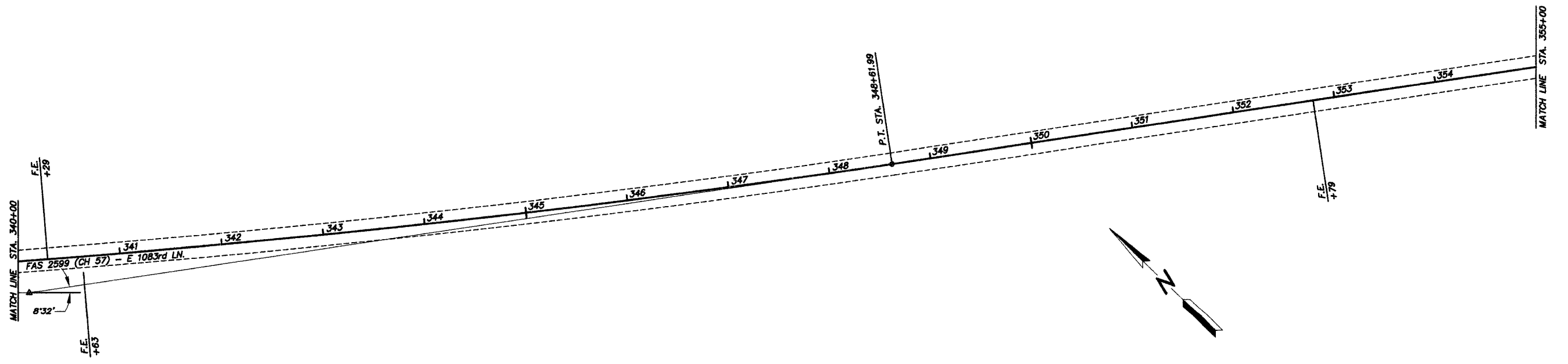
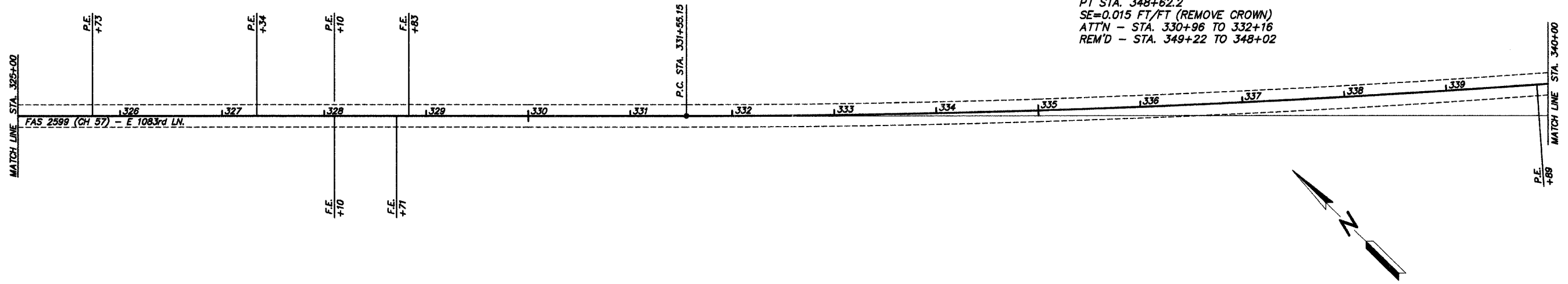
COUNTY	ROUTE	SECTION	TOTAL SHEETS	SHEET NO.
ADAMS	FAS 2599	06-00199-00-RS	13	7

STATION 325+00 TO STATION 355+00
PROJECT NO. RS-2599(103)

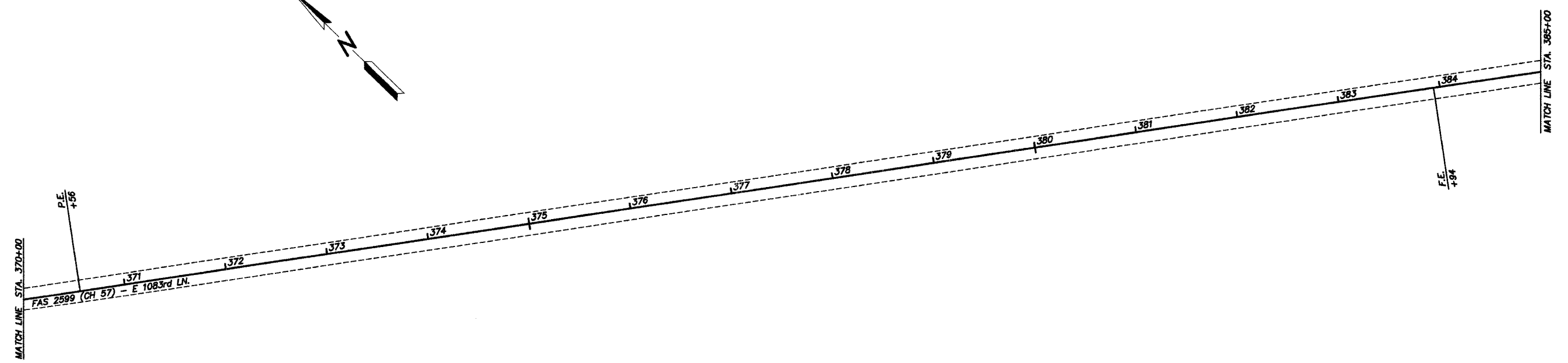
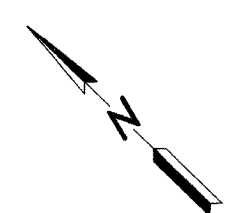
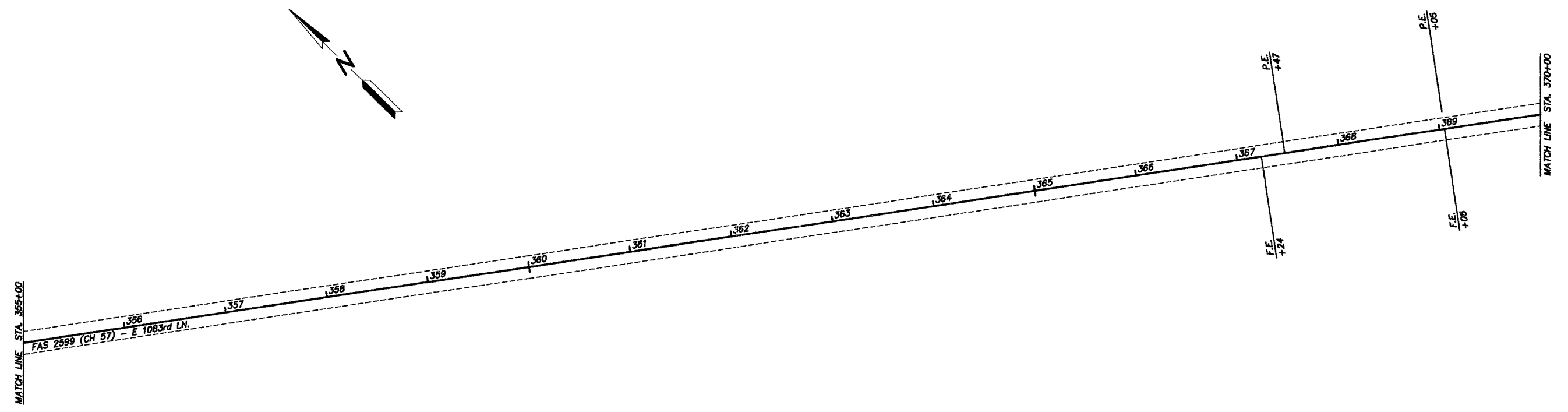
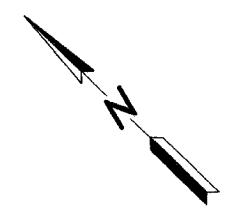
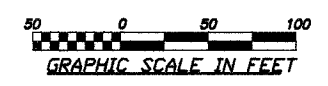


CURVE DATA

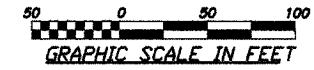
PI STA. 340+10.5
 $\Delta=8'32''$
 $D=0'30''$
 $T=855.0'$
 $R=11,460.0'$
 $L=1,706.7'$
 $E=31.8'$
 PC STA. 331+55.5
 PT STA. 348+62.2
 SE=0.015 FT/FT (REMOVE CROWN)
 ATTN - STA. 330+96 TO 332+16
 REM'D - STA. 349+22 TO 348+02



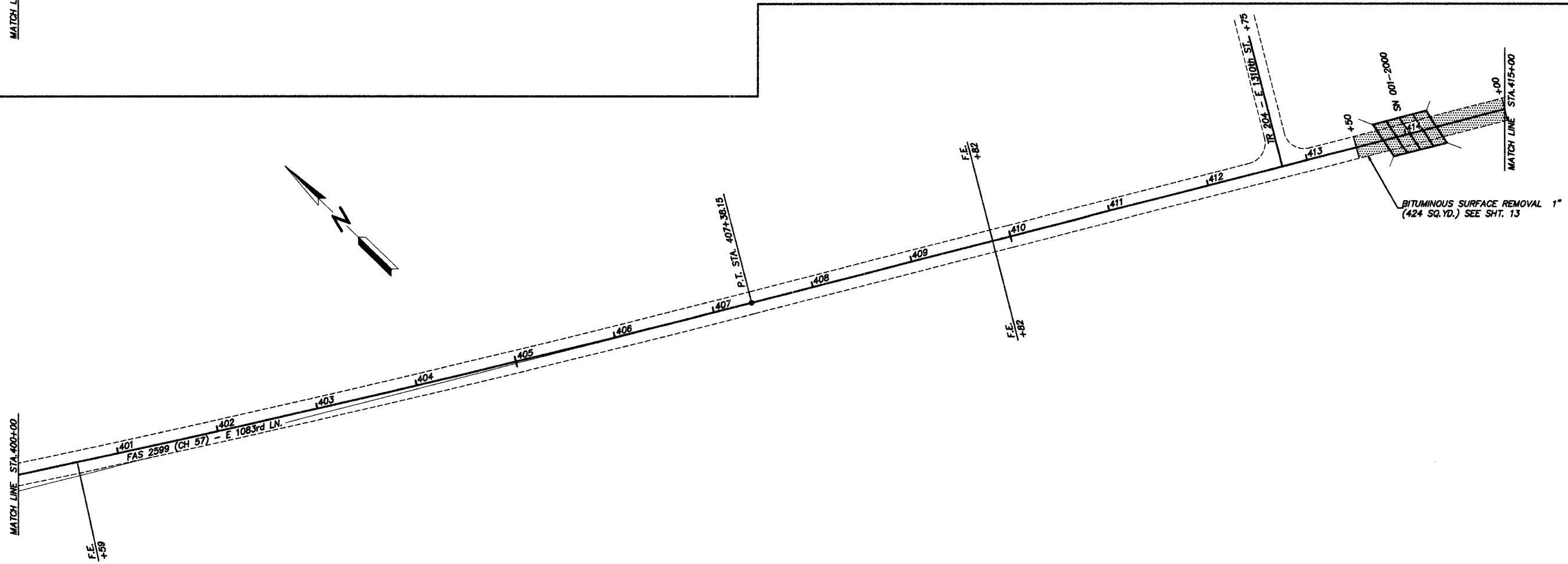
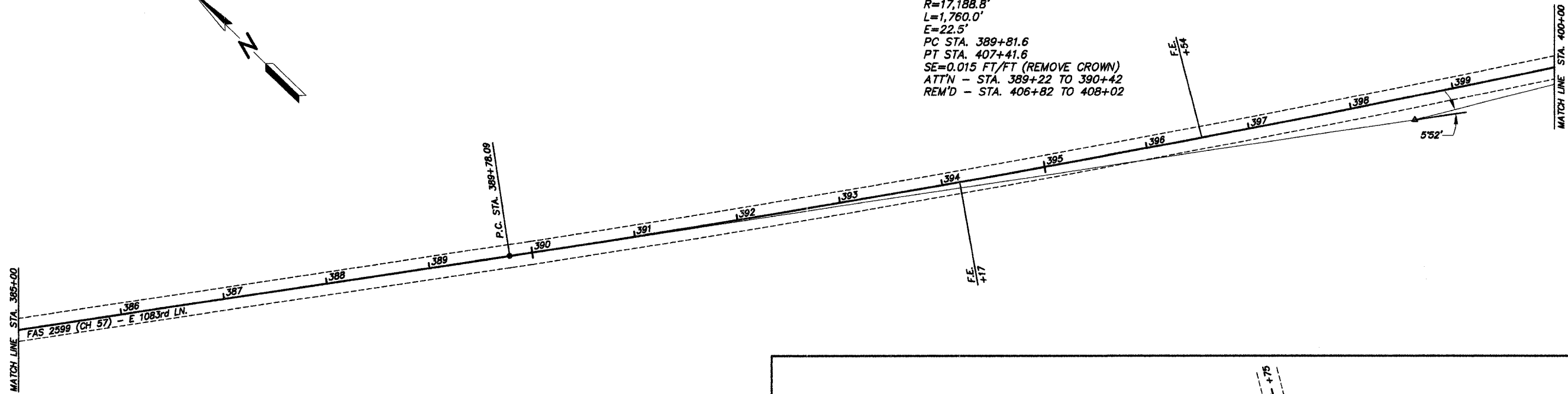
COUNTY	ROUTE	SECTION	TOTAL SHEETS	SHEET NO.
ADAMS	FAS 2599	06-00199-00-RS	13	8
STATION 355+00 TO STATION 385+00				
PROJECT NO. RS-2599(103)				



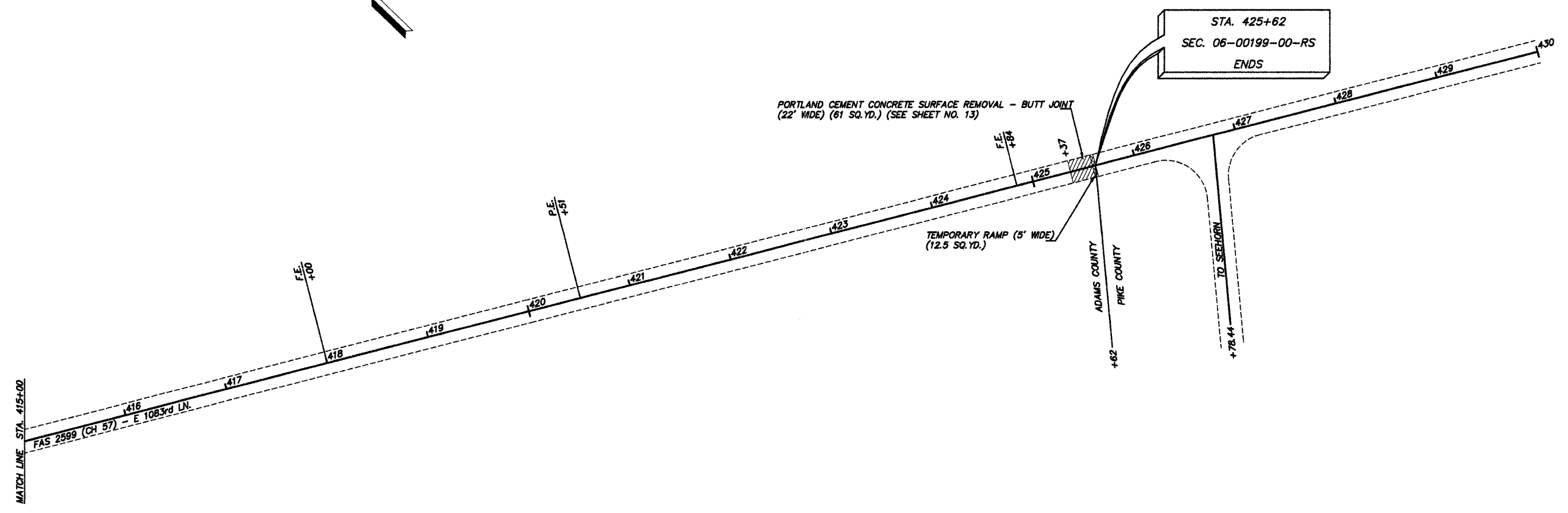
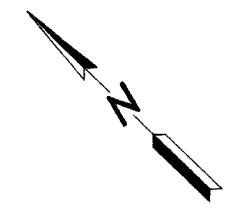
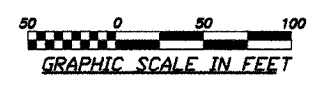
COUNTY	ROUTE	SECTION	TOTAL SHEETS	SHEET NO.
ADAMS	FAS 2599	06-00199-00-RS	13	9
STATION 385+00 TO STATION 415+00				
PROJECT NO. RS-2599(103)				



CURVE DATA
 PI STA. 398+62.4
 $\Delta=5^{\circ}52'$
 $D=0^{\circ}20'$
 $T=880.8'$
 $R=17,188.8'$
 $L=1,760.0'$
 $E=22.5'$
 PC STA. 389+81.6
 PT STA. 407+41.6
 $SE=0.015$ FT/FT (REMOVE CROWN)
 ATT'N - STA. 389+22 TO 390+42
 REM'D - STA. 406+82 TO 408+02

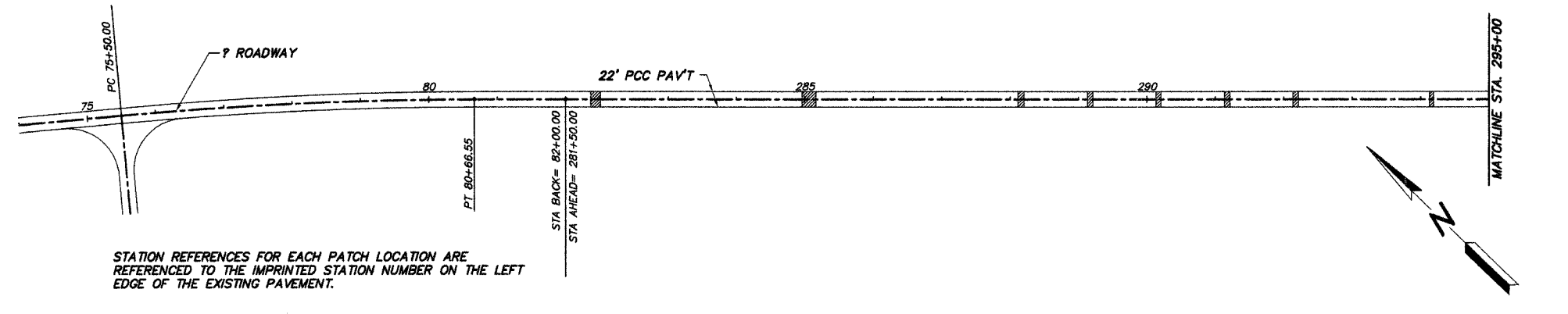
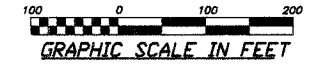


COUNTY	ROUTE	SECTION	TOTAL SHEETS	SHEET NO.
ADAMS	FAS 2599	06-00199-00-RS	13	10
STATION 415+00 TO STATION 425+62				
PROJECT NO. RS-2599(103)				

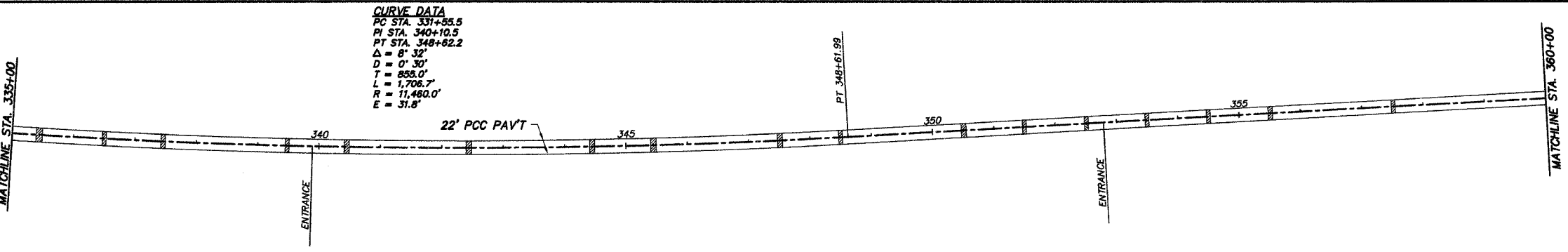
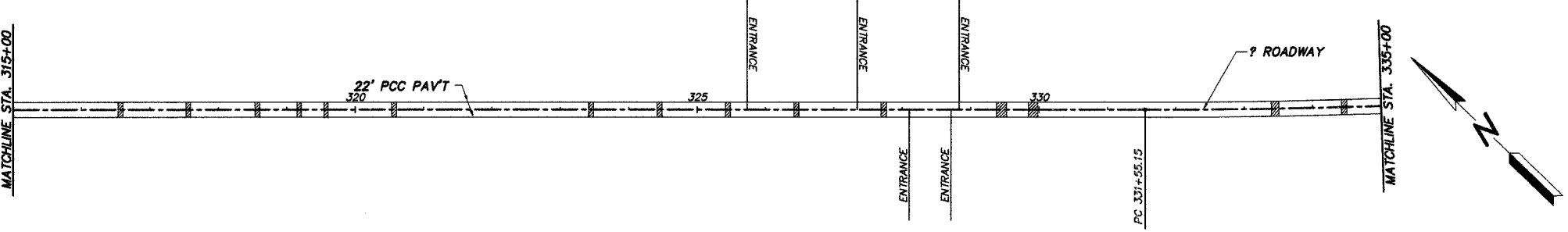
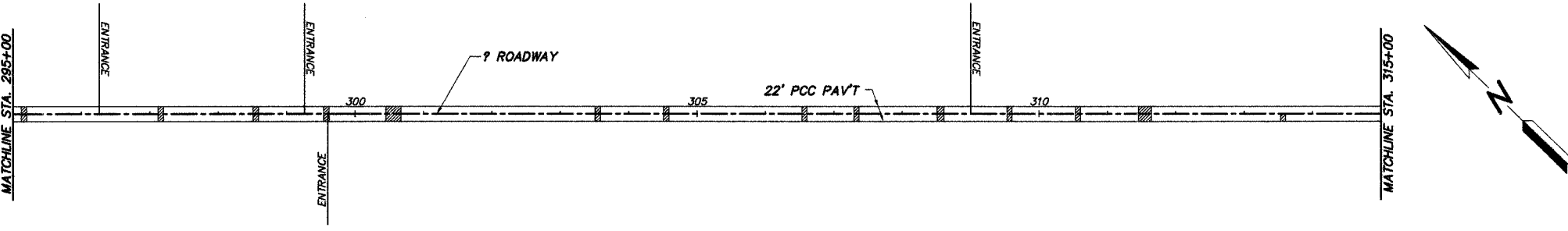


COUNTY	ROUTE	SECTION	TOTAL SHEETS	SHEET NO.
ADAMS	FAS 2599	06-00199-00-RS	13	11

STA. 74+00 TO STA. 360+00
PROJECT NO. RS-2599(103)



STATION REFERENCES FOR EACH PATCH LOCATION ARE REFERENCED TO THE IMPRINTED STATION NUMBER ON THE LEFT EDGE OF THE EXISTING PAVEMENT.



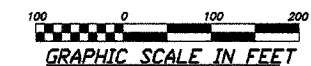
CURVE DATA
 PC STA. 331+55.5
 PI STA. 340+10.5
 PT STA. 348+62.2
 Δ = 8° 32'
 D = 0° 30'
 T = 855.0'
 L = 1,706.7'
 R = 11,480.0'
 E = 31.8'

STA.	LENGTH	LEFT ?				RIGHT ?				
		TYPE I	TYPE II	TYPE III	TYPE IV	LENGTH	TYPE I	TYPE II	TYPE III	TYPE IV
281+94	14			17.1		14			17.1	
285+06	20*			24.4		20*			24.4	
288+16	12		14.7			12		14.7		
289+17	8		9.8			8		9.8		
290+17	8		9.8			8		9.8		
291+17	7		8.6			7		8.6		
292+17	8		9.8			8		9.8		
294+16	6		7.3			6		7.3		
295+16	8		9.8			8		9.8		
297+17	6		7.3			6		7.3		
298+55	7		8.6			7		8.6		
299+58	7		8.6			7		8.6		
300+56	22*				26.9	22*				26.9
303+56	5		6.1			5		6.1		
304+55	8		9.8			8		9.8		
306+57	7		8.6			7		8.6		
308+56	8		9.8			8		9.8		
309+57	7		8.6			7		8.6		
310+57	7		8.6			7		8.6		
311+59	12		14.7			12		14.7		
313+57	7		8.6			7		8.6		
316+57	7		8.6			7		8.6		
317+56	6		7.3			6		7.3		
318+56	7		8.6			7		8.6		
319+18	5		6.1			5		6.1		
319+57	4	4.9				4	4.9			
320+57	7		8.6			7		8.6		
323+45	7		8.6			7		8.6		
324+45	8		9.8			8		9.8		
325+46	7		8.6			7		8.6		
326+46	6		7.3			6		7.3		
327+73	6		7.3			6		7.3		
329+45	18*			22.0		18*			22.0	
329+91	15*			18.3		15*			18.3	
333+45	11		13.4							
334+46	8		9.8			8		9.8		
335+44	10		12.2			10		12.2		
336+50	4	4.9				4	4.9			
337+46	7		8.6			7		8.6		
339+48	3	3.7				3	3.7			
340+45	7		8.6			7		8.6		
342+44	7		8.6			7		8.6		
344+45	8		9.8			8		9.8		
345+45	9		11.0			9		11.0		
347+51	7		8.6			7		8.6		
348+50	6		7.3			6		7.3		
350+51	6		7.3			6		7.3		
351+50	4	4.9				4	4.9			
352+51	4	4.9				4	4.9			
353+50	5		6.1			5		6.1		
354+50	4	4.9				4	4.9			
355+51	6		7.3			6		7.3		
357+50	7		8.6			7		8.6		

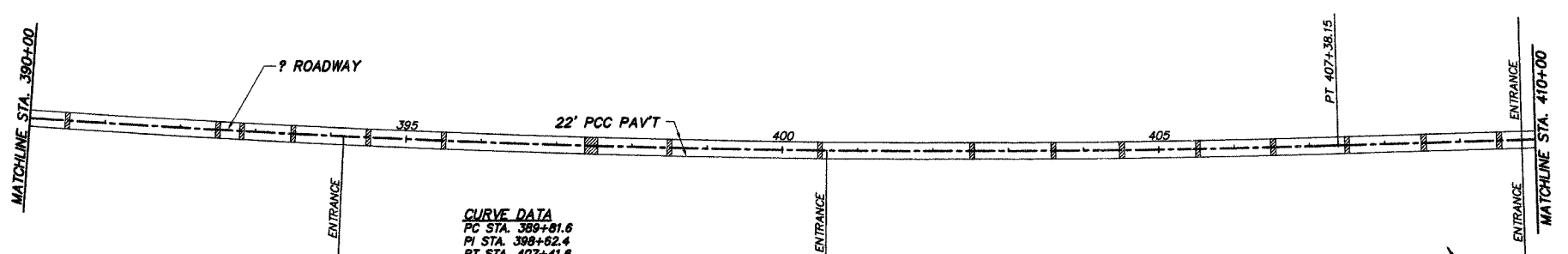
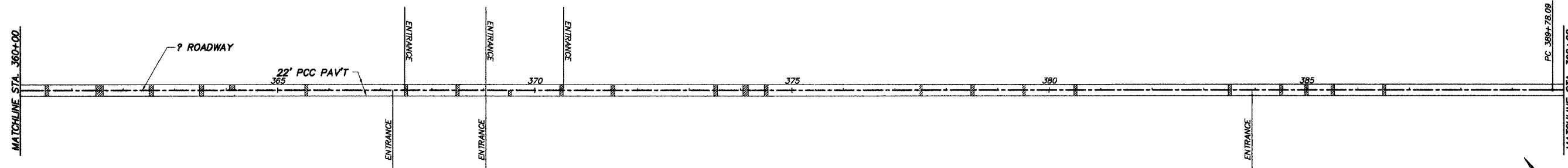
* - LONGITUDINAL JOINT TIE BARS ARE REQUIRED FOR THESE PATCHES AS DETAILED ON STANDARD 420001. LENGTH = AVERAGE LENGTH OF PATCH MEASURED PARALLEL TO THE CENTERLINE OF THE ROADWAY.

SUMMARY OF QUANTITIES (THIS SHEET)

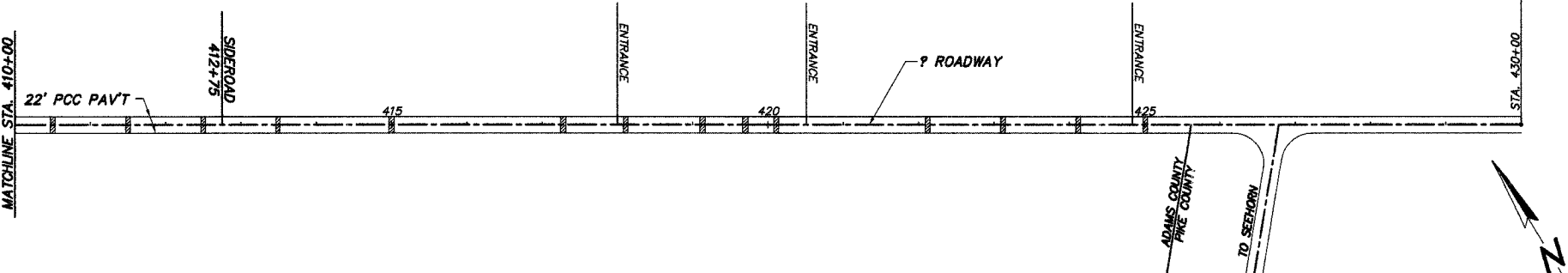
CLASS C PATCHES, TYPE I, 9 INCH	SQ YD	56.4
CLASS C PATCHES, TYPE II, 9 INCH	SQ YD	732.2
CLASS C PATCHES, TYPE III, 9 INCH	SQ YD	163.6
CLASS C PATCHES, TYPE IV, 9 INCH	SQ YD	53.8
SAW CUTS	FOOT	2,288



COUNTY	ROUTE	SECTION	TOTAL SHEETS	SHEET NO.
ADAMS	FAS 2599	06-00189-00-RS	13	12
STA. 74+00 TO STA. 380+00				
PROJECT NO. RS-2599(103)				



CURVE DATA
 PC STA. 389+81.6
 PI STA. 398+82.4
 PT STA. 407+41.6
 Δ = 5° 52'
 D = 0' 20"
 T = 880.8'
 L = 1,780.0'
 R = 17,188.8'
 E = 22.5'



STA.	LENGTH	LEFT ?				RIGHT ?				
		TYPE I	TYPE II	TYPE III	TYPE IV	LENGTH	TYPE I	TYPE II	TYPE III	TYPE IV
360+52	5					5				
361+54	15*			18.3		15*			18.3	
362+54	5		6.1			5		6.1		
363+52	7.5		9.2			7.5		9.2		
364+10	10		12.2							
365+73						5		6.1		
367+50	4	4.9				4	4.9			
368+50	6		7.3			6		7.3		
369+52						6		7.3		
370+52	4	4.9				4	4.9			
371+52	6		7.3			6		7.3		
373+51	6		7.3			6		7.3		
374+10	6		7.3			6		7.3		
374+50	10		12.2			10		12.2		
378+51	5		6.1			5		6.1		
380+51	5		6.1			5		6.1		
383+50	5		6.1			5		6.1		
384+52	5		6.1			5		6.1		
385+00	5		6.1			5		6.1		
385+52	5		6.1			5		6.1		
386+50	5		6.1			5		6.1		
390+50	4	4.9								
392+50	5		6.1			5		6.1		
392+76	3	3.7								
393+50	3	3.7				3	3.7			
394+50	4	4.9				4	4.9			
395+50	5		6.1			5		6.1		
397+46	15*			18.3		15*			18.3	
398+50	4	4.9				4	4.9			
400+50	5		6.1			5		6.1		
402+50	5		6.1			5		6.1		
403+60	6		7.3			6		7.3		
404+51	6		7.3			6		7.3		
405+52	6		7.3			6		7.3		
406+52	6		7.3			6		7.3		
407+50	5		6.1			5		6.1		
408+52	5		6.1			5		6.1		
409+51	5		6.1			5		6.1		
410+50	6		7.3							
411+50	4	4.9								
412+44	5		6.1			5		6.1		
413+49	6		7.3			6		7.3		
415+00	7		8.6			7		8.6		
417+28	5		6.1			5		6.1		
418+11	5		6.1			5		6.1		
419+13	5		6.1			5		6.1		
419+70	6		7.3			6		7.3		
420+11	4	4.9								
422+12	5		6.1			5		6.1		
423+11	5		6.1			5		6.1		
424+11	5		6.1			5		6.1		
425+00	6		7.3			6		7.3		

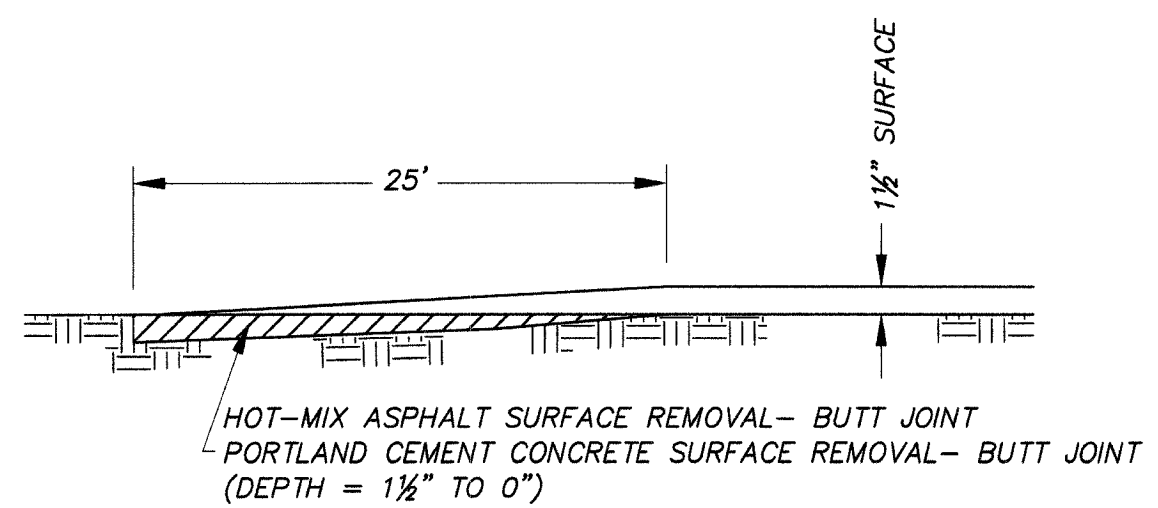
* LONGITUDINAL JOINT TIE BARS ARE REQUIRED FOR THESE PATCHES AS DETAILED ON STANDARD 420001. LENGTH = AVERAGE LENGTH OF PATCH MEASURED PARALLEL TO THE CENTERLINE OF THE ROADWAY.

SUMMARY OF QUANTITIES (THIS SHEET)

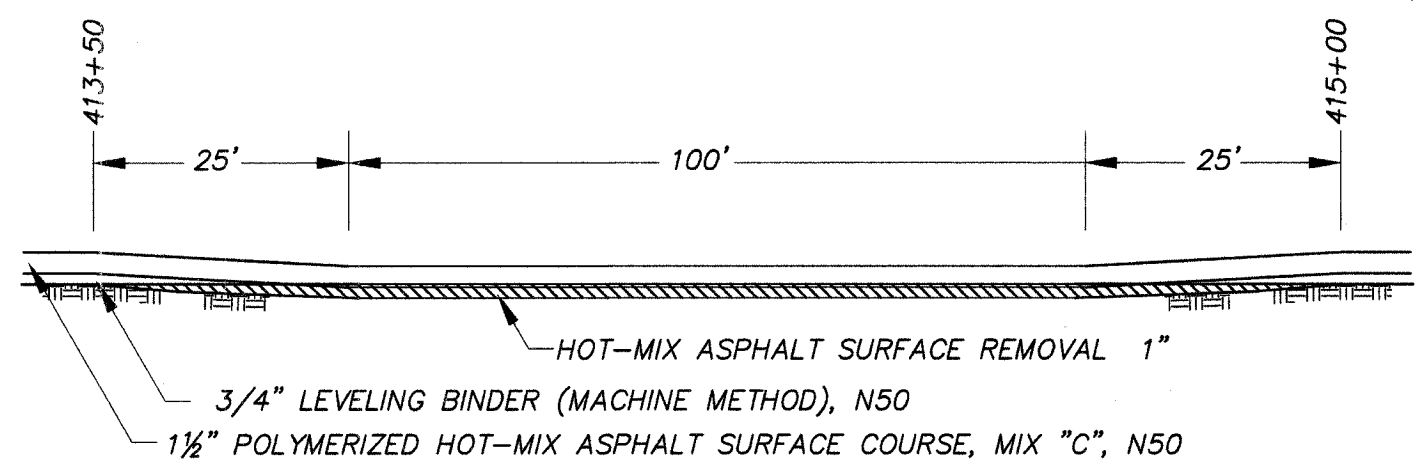
CLASS C PATCHES, TYPE I, 9 INCH	SQ YD	65.0
CLASS C PATCHES, TYPE II, 9 INCH	SQ YD	534.1
CLASS C PATCHES, TYPE III, 9 INCH	SQ YD	73.2
SAW CUTS	FOOT	2,112

COUNTY	ROUTE	SECTION	TOTAL SHEETS	SHEET NO.
ADAMS	FAS 2599	06-00199-00-RS	13	13
BUTT JOINT DETAIL				
SIDE ROAD & ENTRANCE DETAILS				
PROJECT NO. RS-2599(103)				

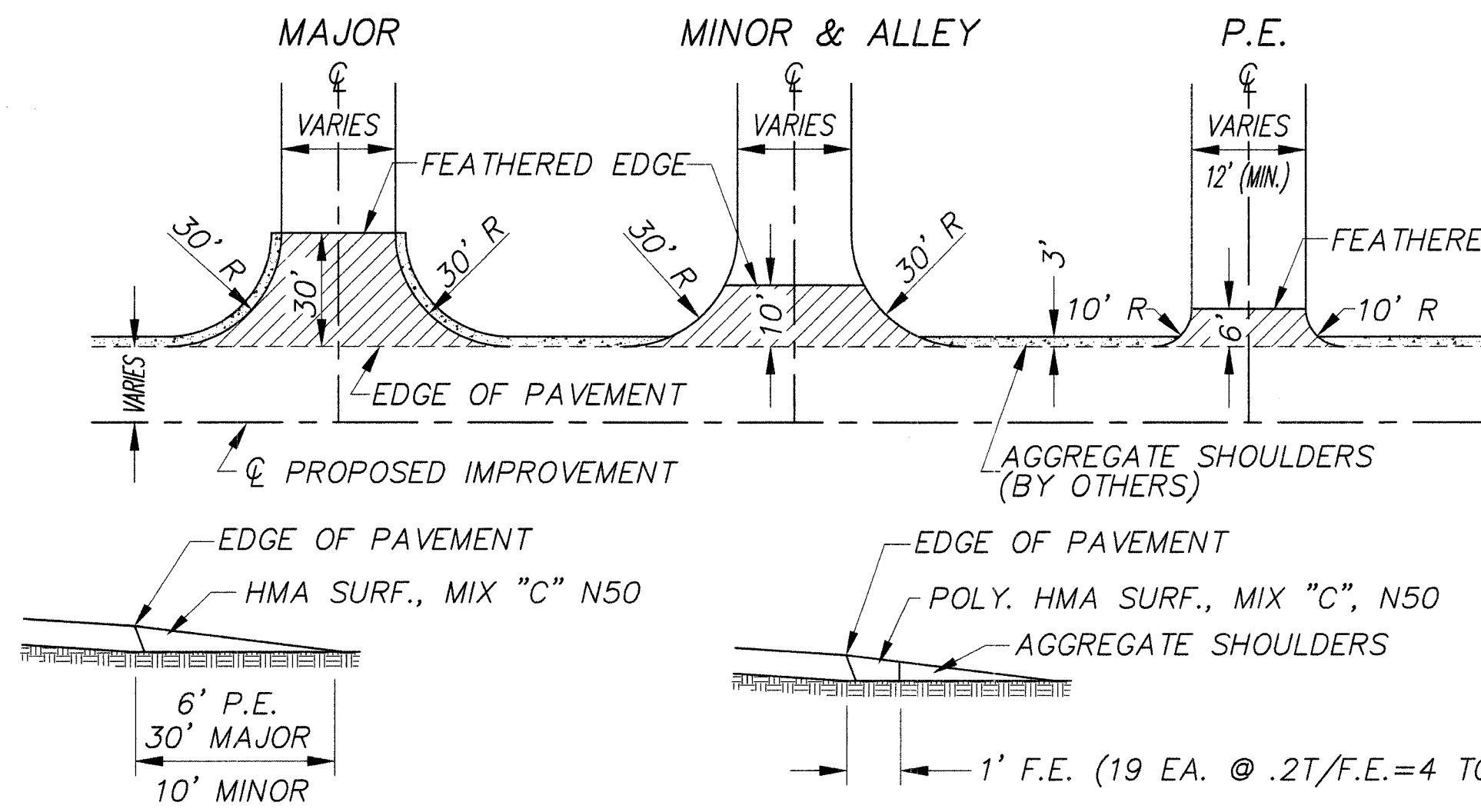
BUTT JOINT DETAIL



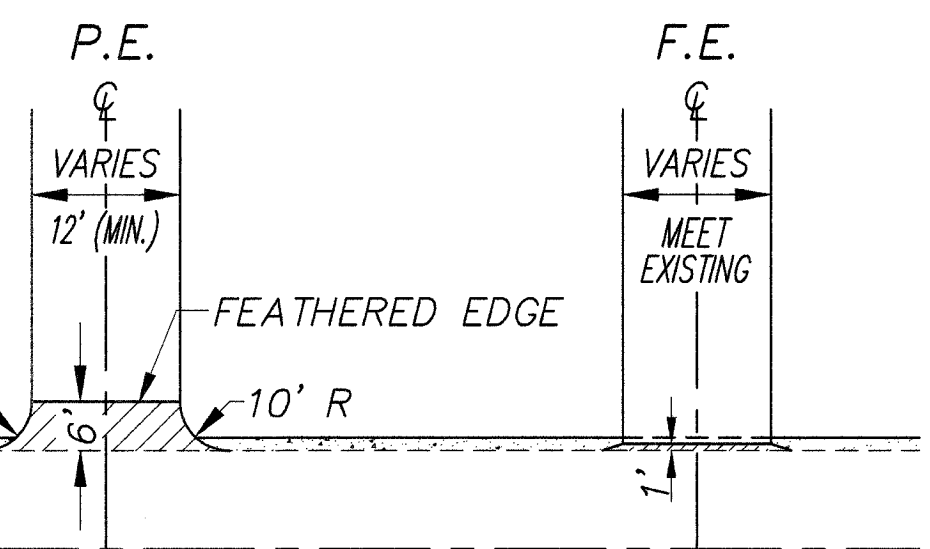
BITUMINOUS SURFACE REMOVAL



INTERSECTION DETAILS



ENTRANCE DETAILS



SCHEDULE - HMA SURFACE, MIX "C", N50

	NO.	TONS/	TONS
PE	8	2	16
CE	0	9	0
MINOR ROAD	1	9	9
MAJOR ROAD	0	15	0
MAILBOXES	3	3	9
TOTAL			34

