

COUNTY	ROUTE	SECTION	TOTAL SHEETS	SHEET NO.
ADAMS	C.H. 11	06-00200-00-RS	10	2
SUMMARY OF QUANTITIES - GENERAL NOTES				
PROJECT NO. RS-1589(105)				

GENERAL NOTES

1. WHERE SECTION OR SUB-SECTION STONES, USGS BENCH MARK MONUMENTS, AND U.S. ARMY CORPS OF ENGINEERS SURVEY MARKERS ARE ENCOUNTERED, THE ENGINEER SHALL BE NOTIFIED BEFORE SUCH STONES AND MONUMENTS ARE REMOVED. THE CONTRACTOR SHALL PROTECT AND CAREFULLY PRESERVE ALL PROPERTY MARKS UNTIL AN OWNER, AN AUTHORIZED SURVEYOR OR THEIR REPRESENTATIVE HAS WITNESSED OR OTHERWISE REFERENCED THE PROPERTY MARKS LOCATION.
2. ALL PRIVATELY OWNED UTILITIES, UNLESS OTHERWISE SPECIFIED, WILL BE MOVED BY THEIR RESPECTIVE OWNERS WHERE REQUIRED. THE FOLLOWING UTILITY COMPANIES HAVE FACILITIES WITHIN THE LIMITS OF CONSTRUCTION:
 - AMERITECH
 - ADAMS RURAL ELECTRICAL CO--OP
 - ABS WATER DISTRICT
3. THE NOMINAL THICKNESS FOR THE LEVELING BINDER, SURFACE COURSES AND AGGREGATE SHOULDERS ARE SHOWN ON THE TYPICAL SECTIONS, STANDARDS, SCHEDULES OR SPECIAL DETAILS. THE CONSTRUCTED THICKNESS OF THE ABOVE ITEMS SHALL NOT BE LESS THAN 90% OF THE NOMINAL THICKNESS AT ANY LOCATION. THE THICKNESS OF THE HOT-MIX ASPHALT SHOWN ON THE PLANS IS THE NOMINAL THICKNESS. DEVIATIONS FROM THE NOMINAL THICKNESS WILL BE PERMITTED WHEN SUCH DEVIATIONS OCCUR DUE TO IRREGULARITIES IN THE EXISTING SURFACE OR BASE WHICH THE HOT-MIX ASPHALT IS PLACED.
4. THE CONTRACTOR SHALL BE RESPONSIBLE FOR DETERMINING THE LOCATION AND ELEVATION OF ALL EXISTING UTILITIES AND TO NOTIFY ALL UTILITY COMPANIES PRIOR TO THE BEGINNING OF CONSTRUCTION. THIS WILL BE CONSIDERED INCIDENTAL TO THE CONTRACT.
5. APPLICATION RATES SHALL BE AS FOLLOWS UNLESS OTHERWISE SPECIFIED BY THE ENGINEER:
 - HOT-MIX ASPHALT
112 LBS PER SQUARE YARD
 - BITUMINOUS MATERIALS (PRIME COAT)
0.05-0.10 GALLON PER SQUARE YARD ON PCC OR BITUMINOUS CONCRETE
0.25-0.35 GALLON PER SQUARE YARD ON AGGREGATE
 - AGGREGATE (PRIME COAT)
4 LBS PER SQUARE YARD
6. PERMANENT & TEMPORARY PAVEMENT MARKING TO BE DONE BY OTHERS. SHORT TERM PAVEMENT MARKING IS INCLUDED IN THE CONTRACT. THE REMOVAL OF THE SHORT TERM PAVEMENT MARKING TAPE WILL BE DONE BY OTHERS UPON COMPLETION OF THE PERMANENT PAVEMENT MARKING.

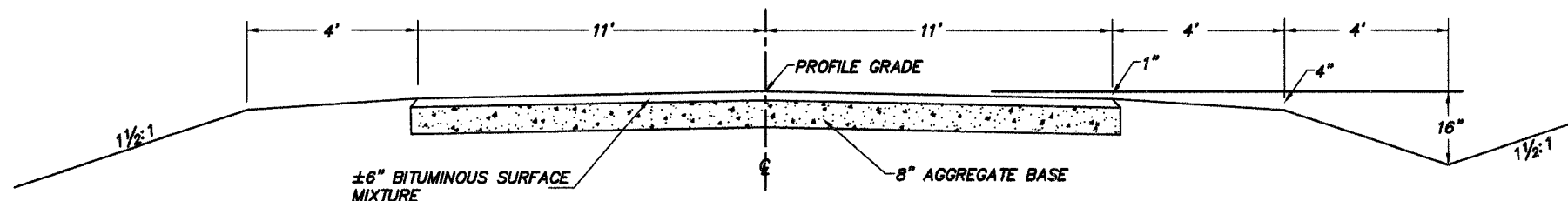
SUMMARY OF QUANTITIES

QUANTITY	UNIT	ITEM	CODE NO.	SPECIAL PROVISIONS
4,903	GALLON	BITUMINOUS MATERIALS (PRIME COAT)	40600100	*
98	TON	AGGREGATE (PRIME COAT)	40600300	
416	TON	LEVELING BINDER (MACHINE METHOD), N50	40600625	*
1	EACH	CONSTRUCTING TEST STRIP	40600895	
81	SQ. YD.	HOT-MIX ASPHALT SURFACE REMOVAL - BUTT JOINT	40600982	*
40	SQ. YD.	TEMPORARY RAMP	40600990	
183	TON	HOT-MIX ASPHALT SURFACE COURSE, MIX "C", N50	40603310	*
5,660	TON	POLYMERIZED HOT-MIX ASPHALT SURFACE COURSE, MIX "C", N50	40603510	*
1	L. SUM	MOBILIZATION	67100100	
1	L. SUM	TRAFFIC CONTROL AND PROTECTION	70101700	*
1,910	FOOT	SHORT TERM PAVEMENT MARKING	70300100	*

CONSTRUCTION TYPE CODE: I000

COUNTY	ROUTE	SECTION	TOTAL SHEETS	SHEET NO.
ADAMS	C.H. 11	06-00200-00-RS	10	3
TYPICAL CROSS SECTIONS				
PROJECT NO. RS-1589(105)				

TYPICAL CROSS SECTIONS



EXISTING CROSS SECTION

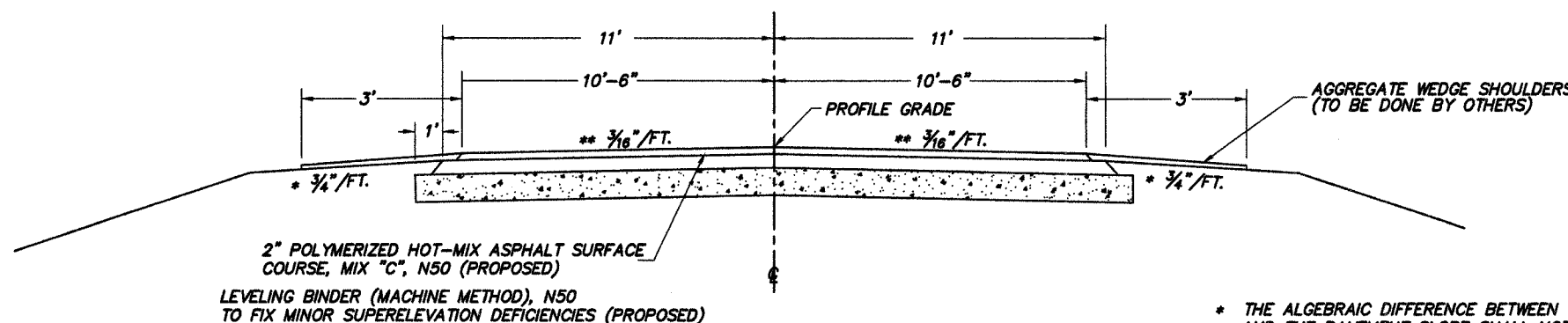
BUILT AS: SECTION 25-A-15d
STA. 435+00 TO STA. 639+36

HOT-MIX ASPHALT MIXTURE REQUIREMENTS

ITEM	ASPHALT GRADE	AGG. COMPOSITION	VOIDS
POLY. SURFACE	SBS PG 64-28	IL-9.5 or 12.5 MIX C	4.0% @ N50
SURFACE	PG 58-22	IL-9.5 or 12.5 MIX C	4.0% @ N50
LEVELING BINDER	PG 58-22	IL-12.5	4.0% @ N50

LEVELING BINDER (MACHINE METHOD), N50 TO FIX MINOR SUPERELEVATION DEFICIENCIES

STA. TO STA.	TONS
436+64.0 TO 441+31.0	162
449+50.3 TO 453+48.9	155
459+31.4 TO 465+00.2	99
TOTAL	416



PROPOSED CROSS SECTION

STA. 435+00 TO STA. 639+36

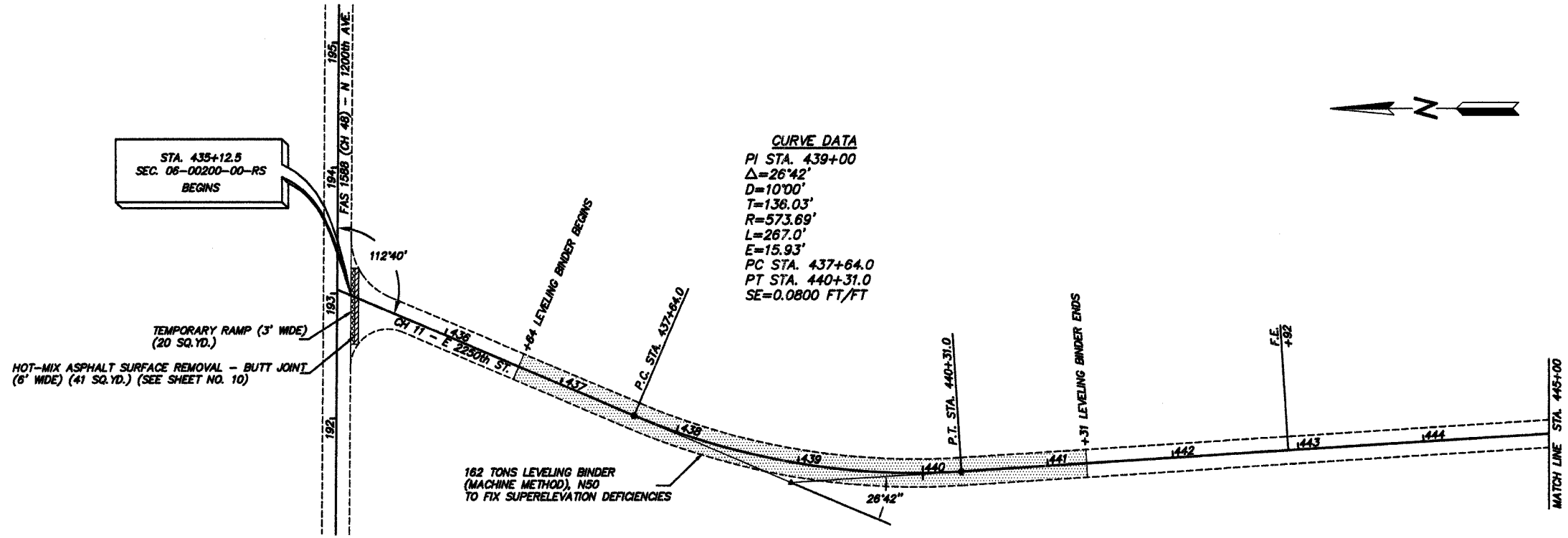
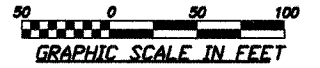
* THE ALGEBRAIC DIFFERENCE BETWEEN THE SHOULDER SLOPE AND THE PAVEMENT SLOPE SHALL NOT EXCEED 10%

** CROWN DOES NOT APPLY IN AREA OF SUPER-ELEVATION OR SUPER-ELEVATION TRANSITION.

COUNTY	ROUTE	SECTION	TOTAL SHEETS	SHEET NO.
ADAMS	CH 11	06-00200-00-RS	10	4

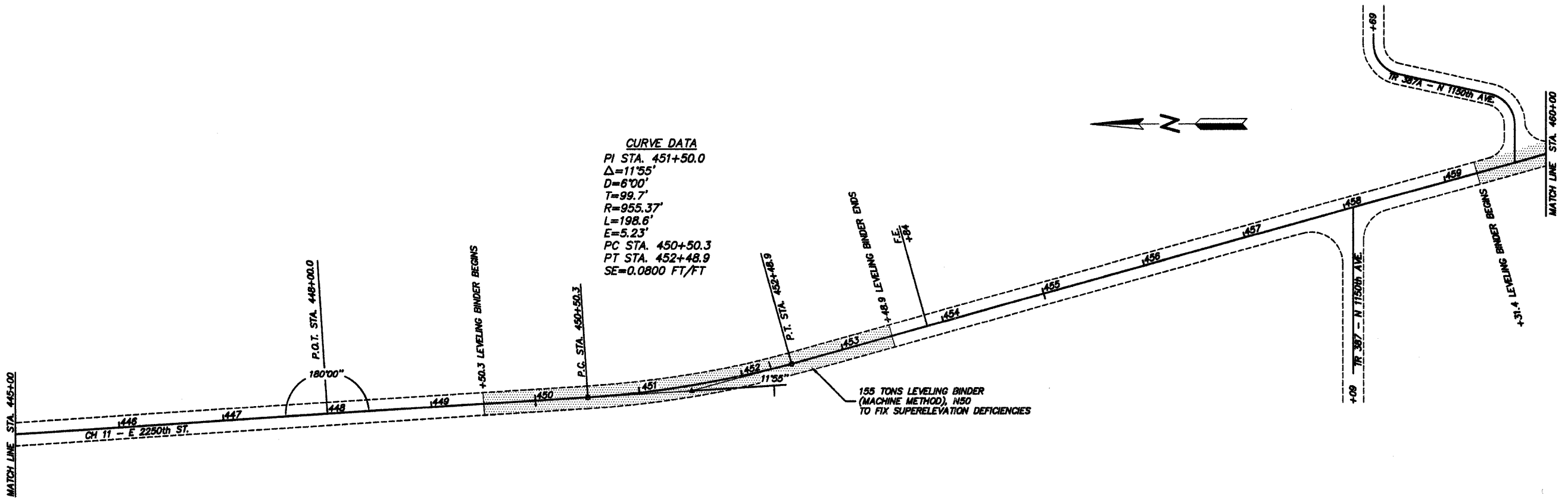
STATION 435+12.5 TO STATION 460+00

PROJECT NO. RS-1589(103)



CURVE DATA

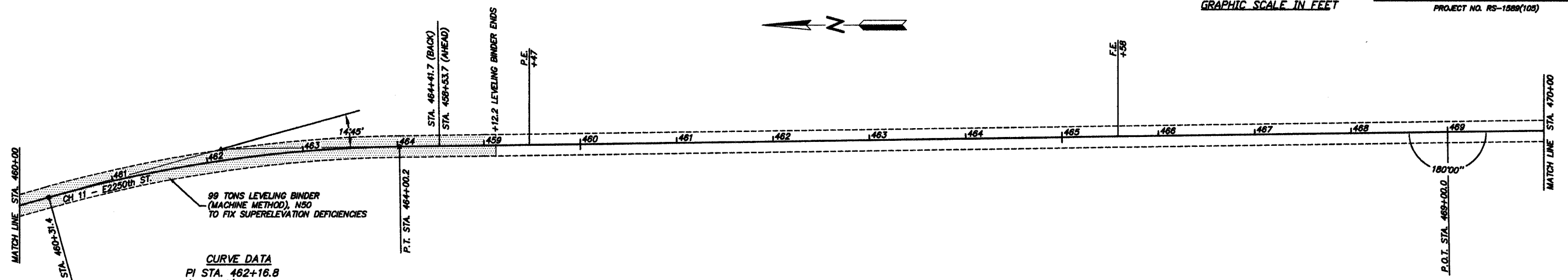
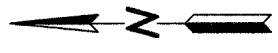
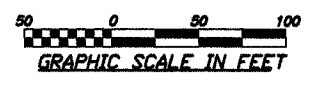
PI STA. 439+00
 $\Delta=26^{\circ}42'$
 $D=10^{\circ}00'$
 $T=136.03'$
 $R=573.69'$
 $L=267.0'$
 $E=15.93'$
 PC STA. 437+64.0
 PT STA. 440+31.0
 $SE=0.0800$ FT/FT



CURVE DATA

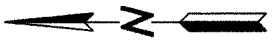
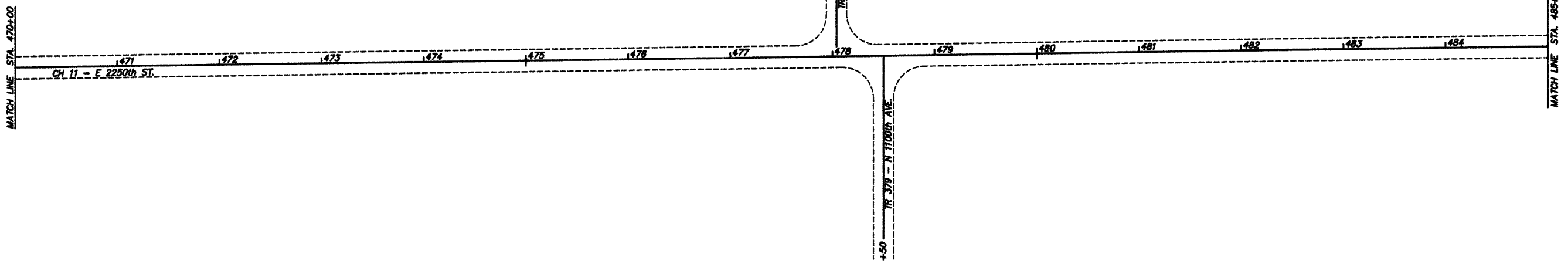
PI STA. 451+50.0
 $\Delta=11^{\circ}55'$
 $D=6^{\circ}00'$
 $T=99.7'$
 $R=955.37'$
 $L=198.6'$
 $E=5.23'$
 PC STA. 450+50.3
 PT STA. 452+48.9
 $SE=0.0800$ FT/FT

COUNTY	ROUTE	SECTION	TOTAL SHEETS	SHEET NO.
ADAMS	CH 11	08-00200-00-RS	10	5
STATION 480+00 TO STATION 485+00				
PROJECT NO. RS-1889(105)				



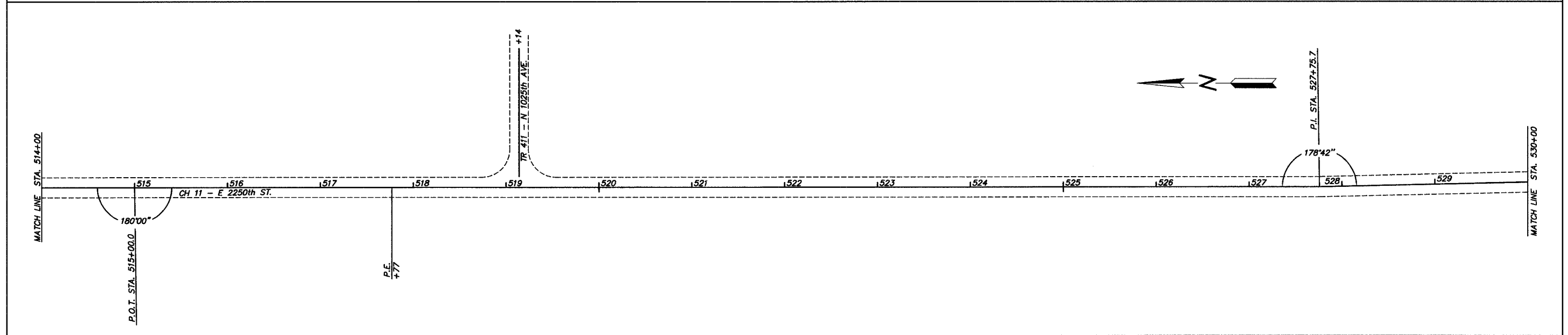
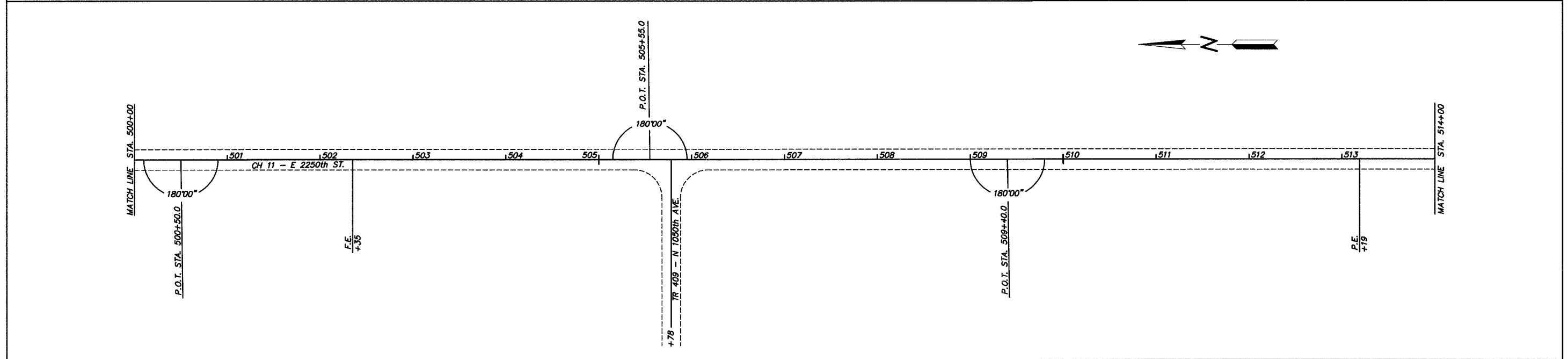
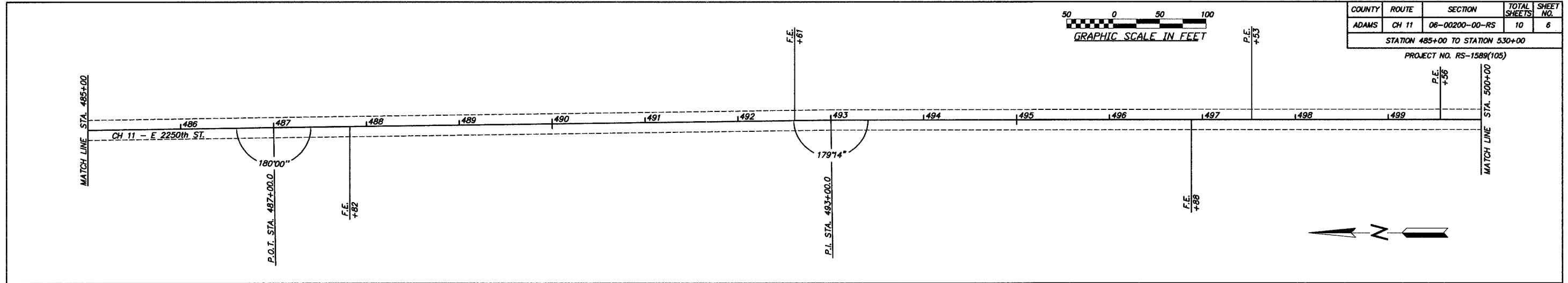
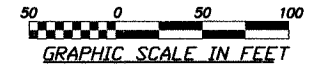
CURVE DATA
 PI STA. 462+16.8
 $\Delta=14^{\circ}45'$
 D=4'00"
 T=185.44'
 R=1,432.69'
 L=368.75'
 E=11.87'
 PC STA. 460+31.4
 PT STA. 464+00.2
 SE=0.0566 FT/FT

99 TONS LEVELING BINDER
 (MACHINE METHOD), N50
 TO FIX SUPERELEVATION DEFICIENCIES



COUNTY	ROUTE	SECTION	TOTAL SHEETS	SHEET NO.
ADAMS	CH 11	06-00200-00-RS	10	6

STATION 485+00 TO STATION 530+00
PROJECT NO. RS-1589(105)

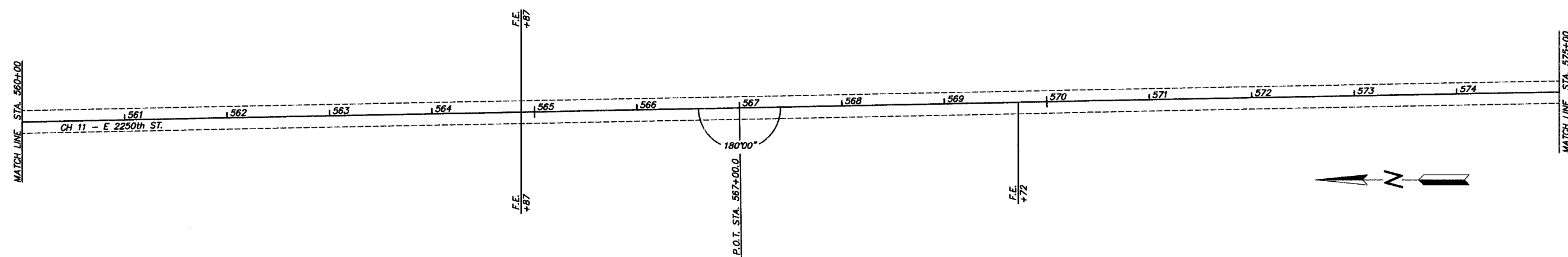
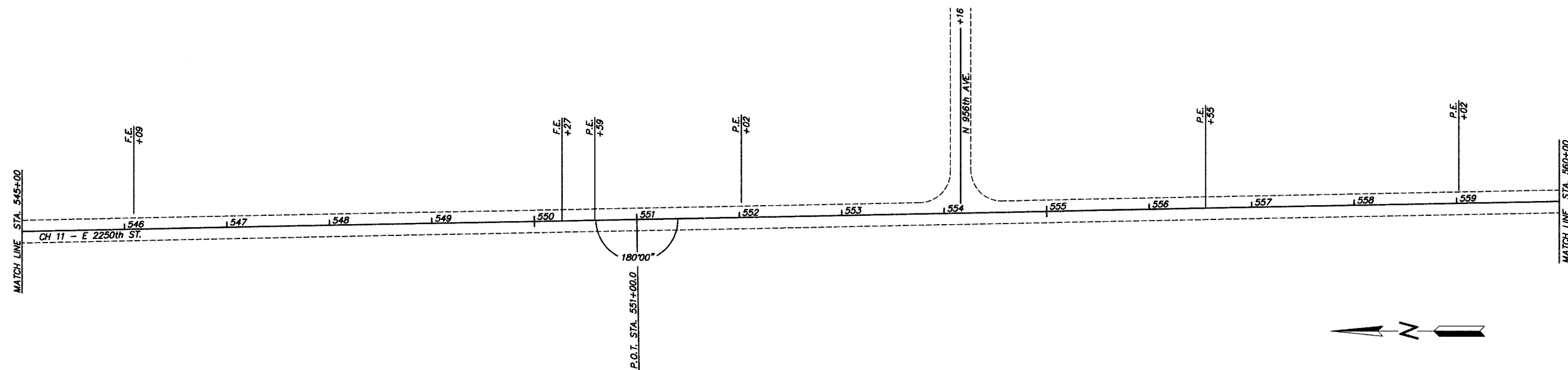
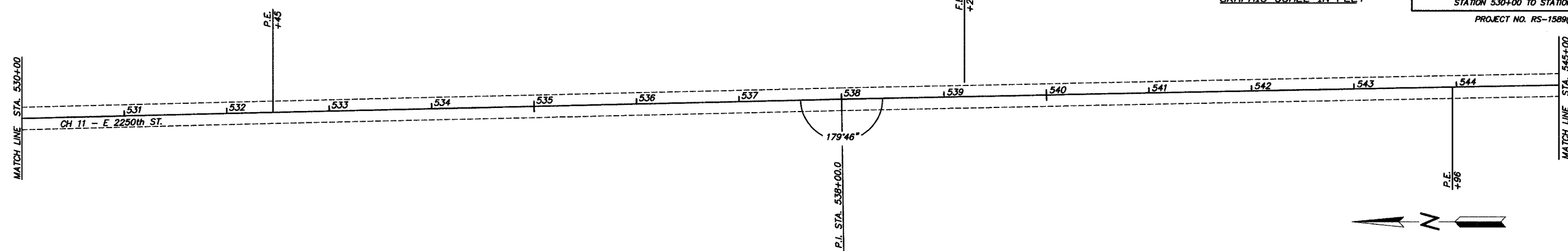




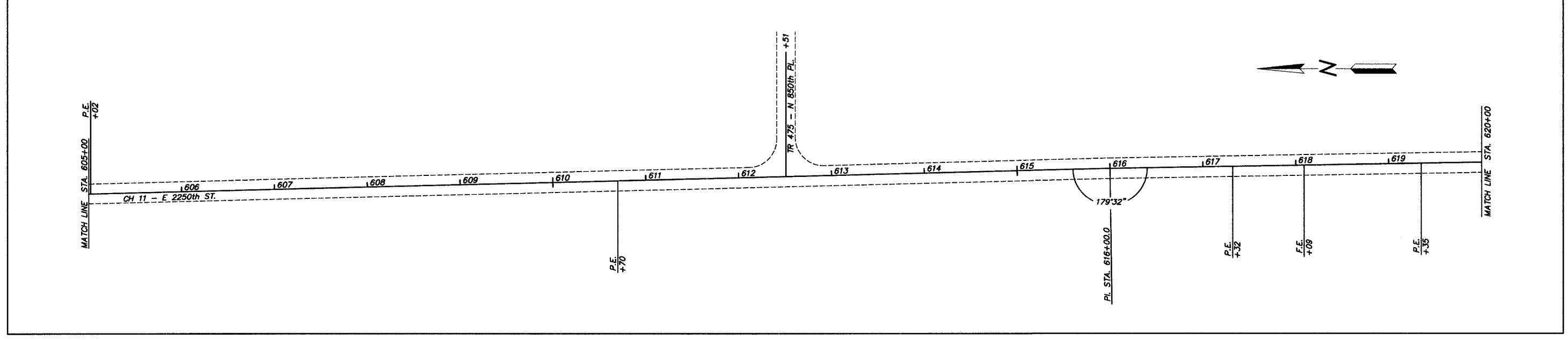
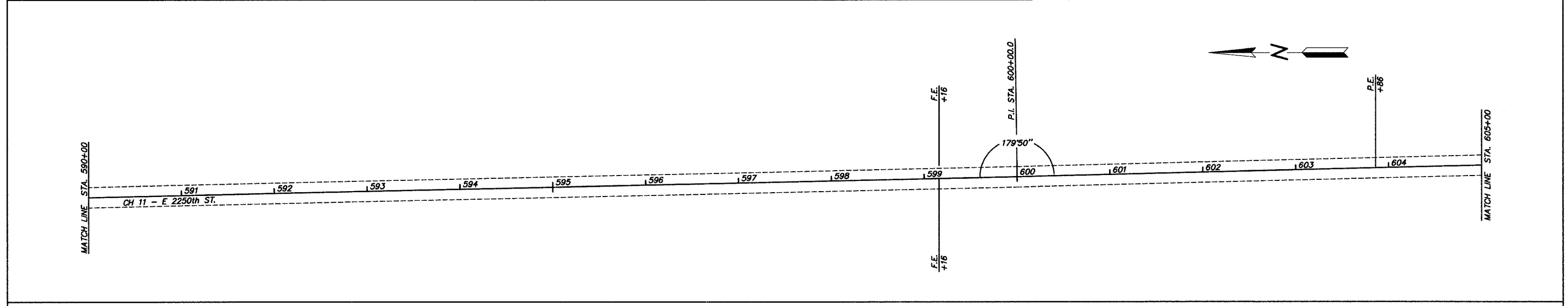
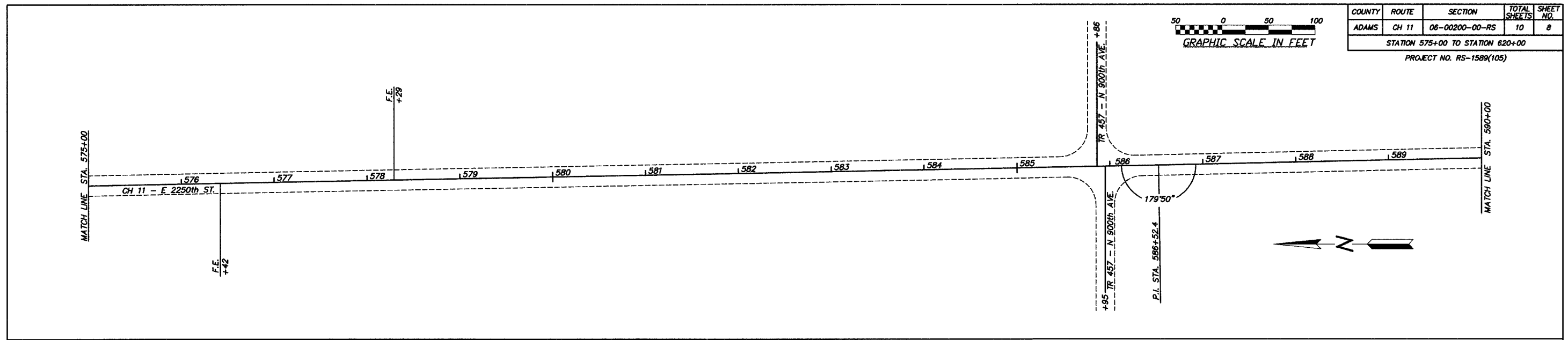
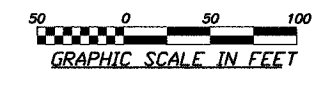
COUNTY	ROUTE	SECTION	TOTAL SHEETS	SHEET NO.
ADAMS	CH 11	06-00200-00-RS	10	7

STATION 530+00 TO STATION 575+00

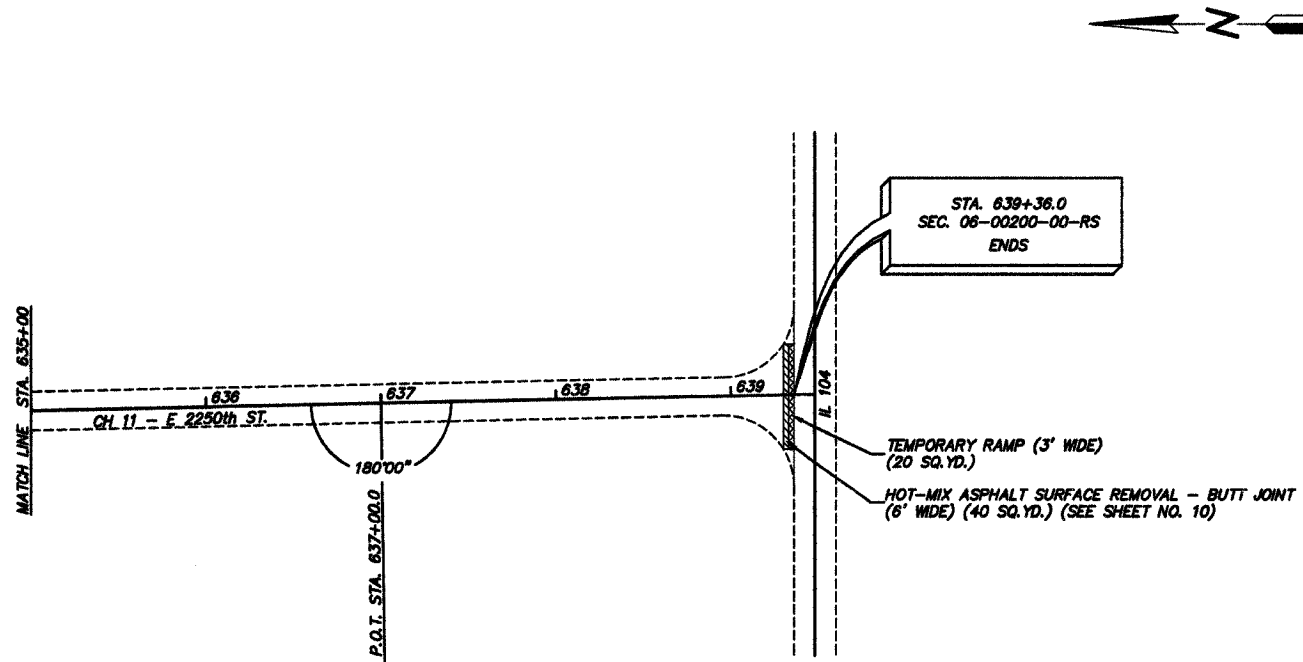
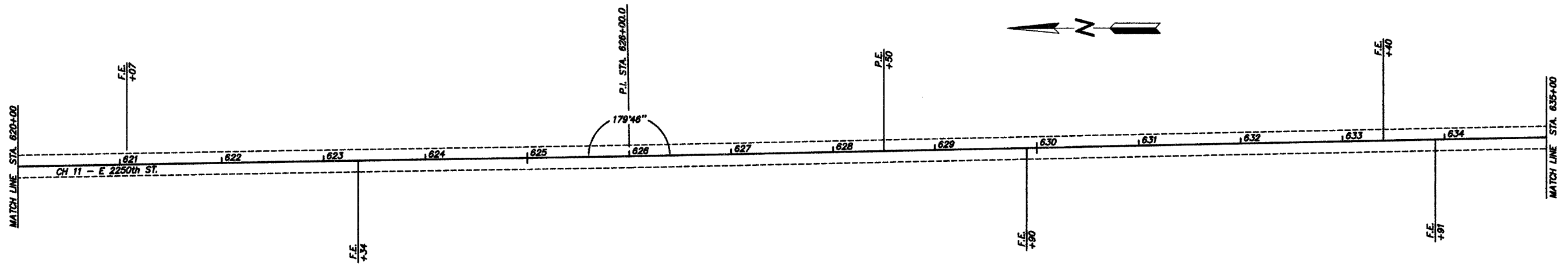
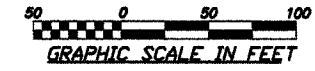
PROJECT NO. RS-1589(105)



COUNTY	ROUTE	SECTION	TOTAL SHEETS	SHEET NO.
ADAMS	CH 11	06-00200-00-RS	10	8
STATION 575+00 TO STATION 620+00				
PROJECT NO. RS-1589(105)				

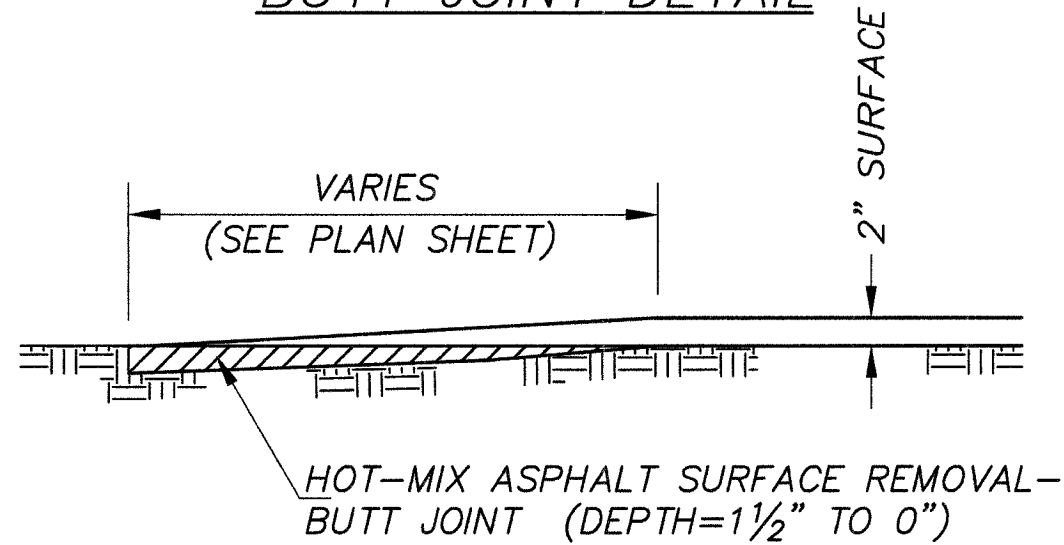


COUNTY	ROUTE	SECTION	TOTAL SHEETS	SHEET NO.
ADAMS	CH 11	06-00200-00-RS	10	9
STATION 620+00 TO STATION 639+36				
PROJECT NO. RS-1589(108)				



COUNTY	ROUTE	SECTION	TOTAL SHEETS	SHEET NO.
ADAMS	CH 11	06-00200-00-RS	10	10
BUTT JOINT DETAIL				
SIDE ROAD & ENTRANCE DETAILS				
PROJECT NO. RS-1589(105)				

BUTT JOINT DETAIL



INTERSECTION DETAILS

ENTRANCE DETAILS

